

ROUTE	SECTION	COUNTY	TOTAL SHEETS	SHEET NO.
TR 222	02-06116-00-BR	PERRY	10	2
PROJECT NO. BROS-145(32)			CONTRACT NO. 99212	

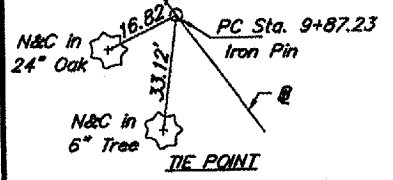
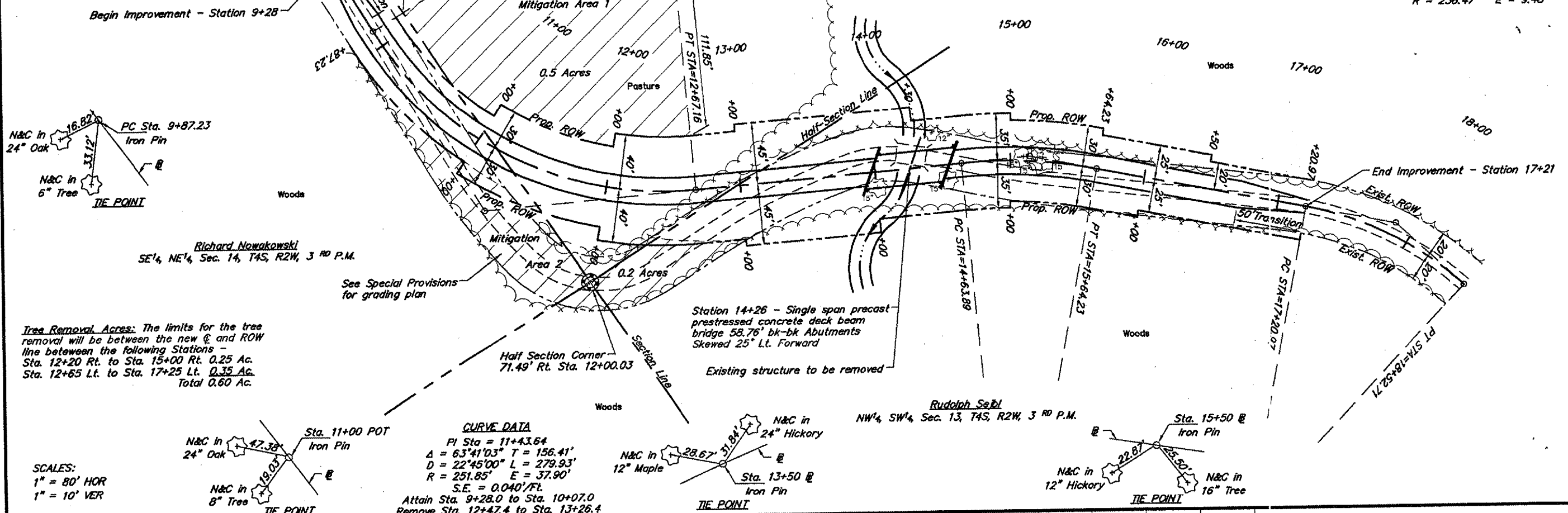
B.M. - Dbl. Nails in 19" Tree
 22' Lt. Sta. 15+29
 Elev. 420.00 (Assumed)

Existing Structure - Single span concrete deck with steel stringers on closed concrete abutments. 14.2' W x 22.0' L

Richard Nowakowski
 SW 1/4, NW 1/4, Sec. 13, T4S, R2W, 3 RD P.M.

CURVE DATA
 PI Sta = 15+14.39
 $\Delta = 16^{\circ}02'03''$ T = 50.50'
 $D = 15^{\circ}58'46''$ L = 100.34'
 $R = 358.56'$ E = 3.54'
 S.E. = 0.040'/FL
 Attain Sta. 14+55.4 to Sta. 15+34.4
 Remove Sta. 15+44.5 to Sta. 16+23.5

CURVE DATA
 PI Sta = 17+88.60
 $\Delta = 31^{\circ}55'16''$ T = 67.63'
 $D = 24^{\circ}13'48''$ L = 131.74'
 $R = 236.47'$ E = 9.48'



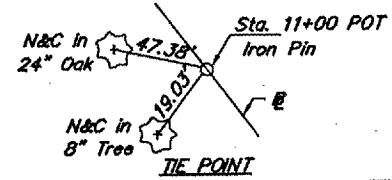
Richard Nowakowski
 SE 1/4, NE 1/4, Sec. 14, T4S, R2W, 3 RD P.M.

See Special Provisions for grading plan

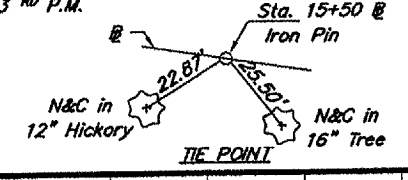
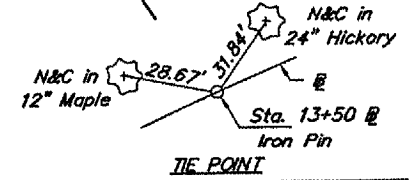
Tree Removal Acres: The limits for the tree removal will be between the new @ and ROW line between the following Stations -
 Sta. 12+20 Rt. to Sta. 15+00 Rt. 0.25 Ac.
 Sta. 12+65 Lt. to Sta. 17+25 Lt. 0.35 Ac.
 Total 0.60 Ac.

Station 14+26 - Single span precast prestressed concrete deck beam bridge 58.76' bk-bk Abutments Skewed 25° Lt. Forward
 Existing structure to be removed

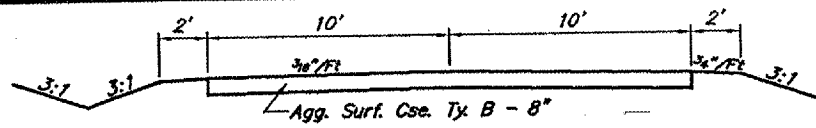
Rudolph Sebl
 NW 1/4, SW 1/4, Sec. 13, T4S, R2W, 3 RD P.M.



CURVE DATA
 PI Sta = 11+43.64
 $\Delta = 63^{\circ}41'03''$ T = 156.41'
 $D = 22^{\circ}45'00''$ L = 279.93'
 $R = 251.85'$ E = 37.90'
 S.E. = 0.040'/FL
 Attain Sta. 9+28.0 to Sta. 10+07.0
 Remove Sta. 12+47.4 to Sta. 13+26.4



SCALES:
 1" = 80' HOR
 1" = 10' VER



Embankment	1,242 CY	Embankment	546 CY
Earth Excavation	570 CY	Earth Excavation	129 CY
Channel Excavation	92 CY	Channel Excavation	87 CY
Borrow Excavation	580 CY	Borrow Excavation	330 CY

(Includes mitigation area quantities)

