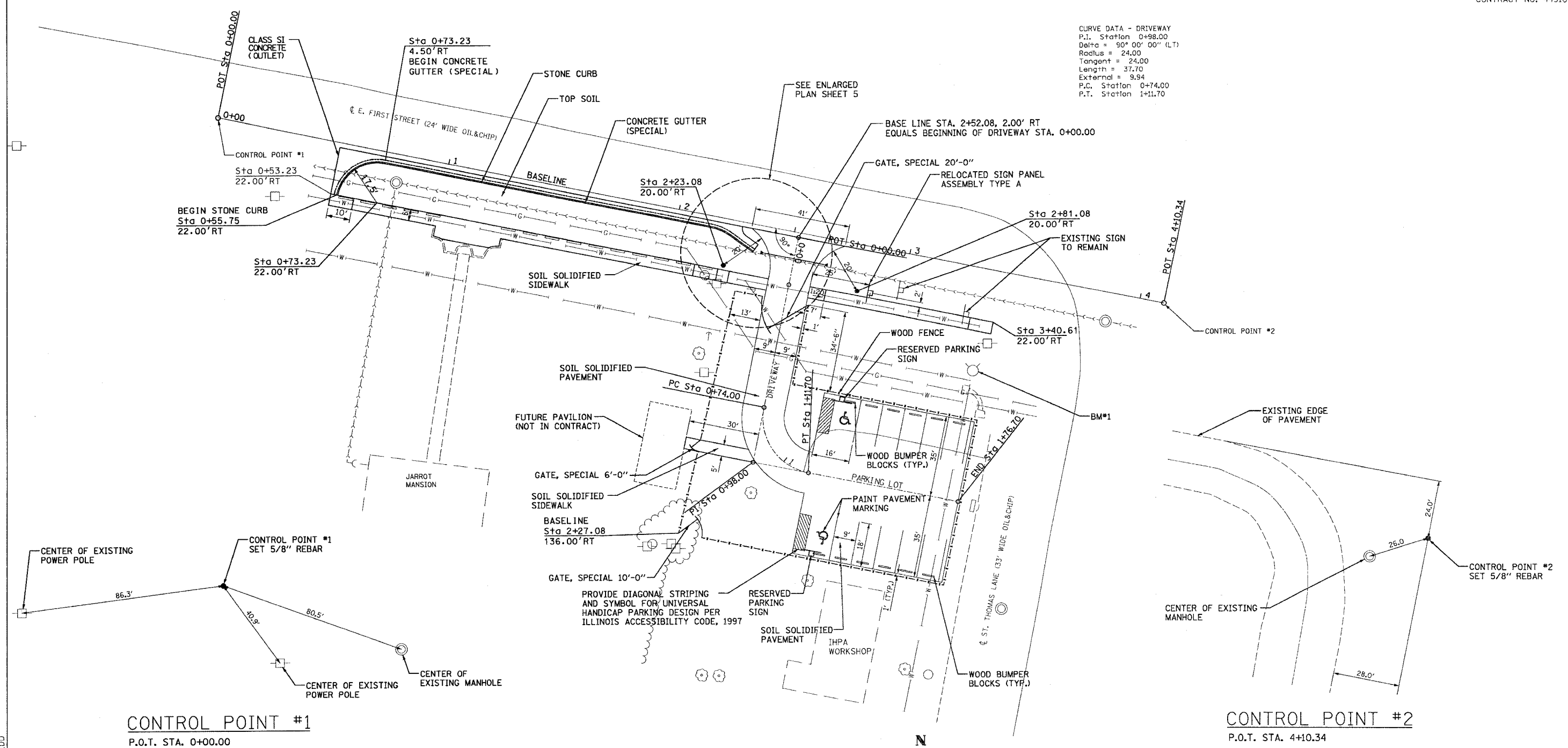


F.A. RT.	SECTION	COUNTY	TOTAL SHEETS	SHEET NO.
		ST. CLAIR	10	4
STA.	TO STA.			
FED. ROAD DIST. NO.	ILLINOIS	FED. AID PROJECT		
CONTRACT NO. 44910				

BENCH MARK (BM #1) - CHISELED X ON STUD OF SOUTH BOLT
 LOCATED ON THE TOP OF THE FIRE HYDRANT STA. 3+36.24
 43.24' RT
 ELEVATION = 320.626

CURVE DATA - DRIVEWAY
 P.I. Station 0+98.00
 Delta = 90° 00' 00" (LT)
 Radius = 24.00
 Tangent = 24.00
 Length = 37.70
 External = 9.94
 P.C. Station 0+74.00
 P.T. Station 1+11.70



CONTROL POINT #1
 P.O.T. STA. 0+00.00

CONTROL POINT #2
 P.O.T. STA. 4+10.34

PROPOSED PLAN
 SCALE: 1" = 20'

DISTRICT PROJECT ENGINEER - LANCE KIDD

REVISIONS	
NAME	DATE

ILLINOIS DEPARTMENT OF TRANSPORTATION
PROPOSED PLAN
 IDOT / IHPA
 JARROT MANSION STATE
 HISTORIC SITE

SCALE: 1:20
 DATE: 4-12-06

DRAWN BY: EJR
 CHECKED BY: KCM