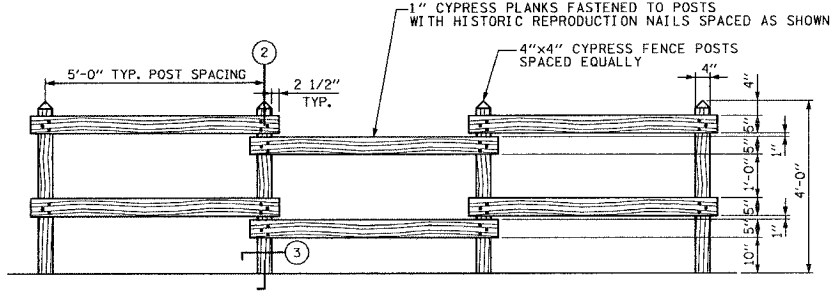
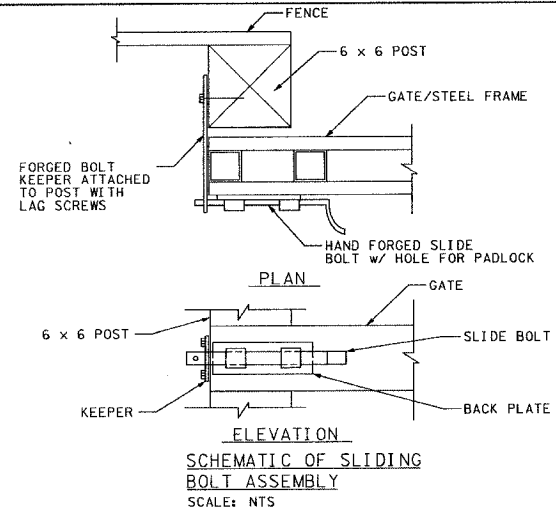
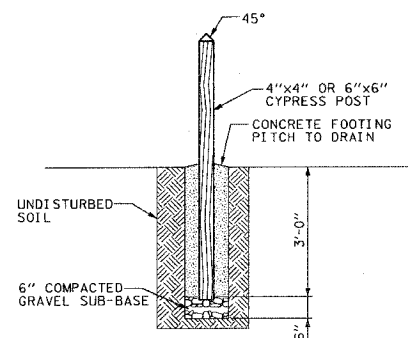


F.A. RTE.	SECTION	COUNTY	TOTAL SHEETS	SHEET NO.
		ST. CLAIR	10	6
STA.	TO STA.			
FED. ROAD DIST. NO.	ILLINOIS	FED. AID PROJECT		
CONTRACT NO. 44910				

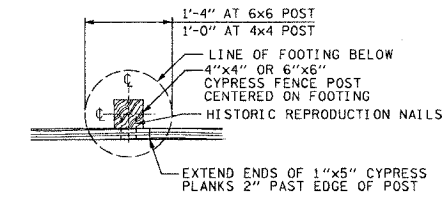


① WOOD FENCE ELEVATION  
SCALE: 1/2"=1'-0"

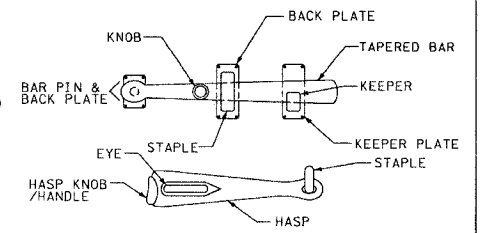
NOTE: ALL FENCE AND GATE LUMBER TO BE FULL SIZE OF DIMENSIONS SHOWN.



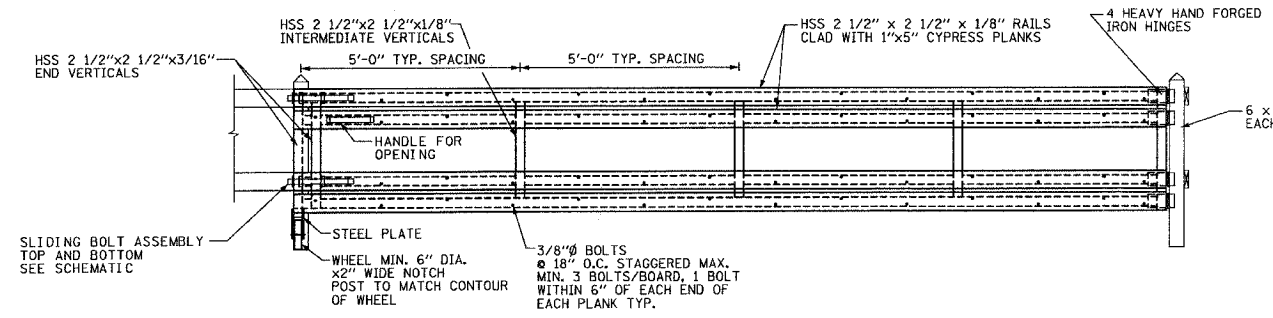
② SECTION  
SCALE: 1/2"=1'-0"



③ PLAN  
SCALE: 1/2"=1'-0"

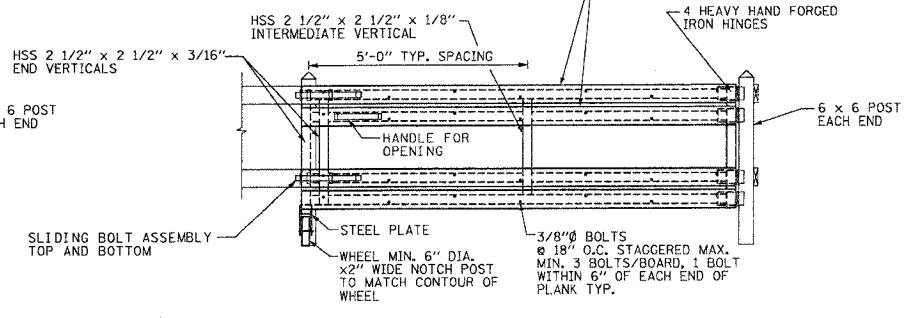


SCHEMATIC ELEVATION OF LATCH FOR GATE, SPECIAL 6'-0"  
SCALE: NTS



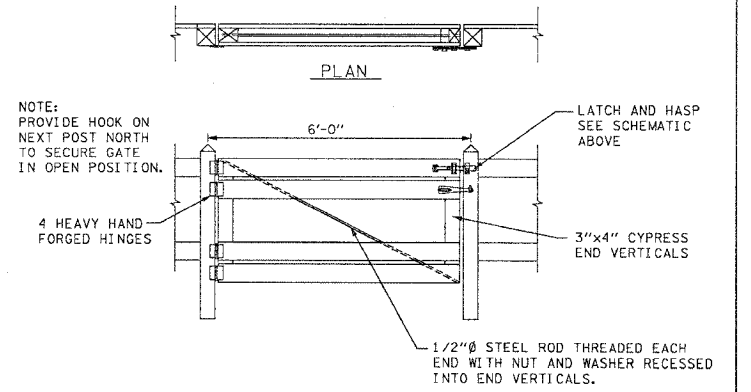
④ GATE, SPECIAL 20'-0" ELEVATION  
SCALE: 1/2"=1'-0"

NOTE: PROVIDE HOOK AND EYE ASSEMBLY TO HOLD GATE IN OPEN POSITION



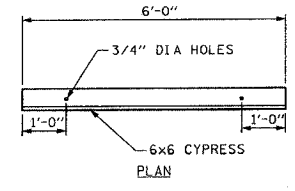
⑤ GATE, SPECIAL 10'-0" ELEVATION  
SCALE: 1/2"=1'-0"

NOTE: PROVIDE HOOK AND EYE ASSEMBLY TO HOLD GATE IN OPEN POSITION

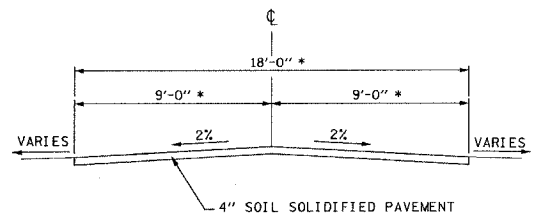
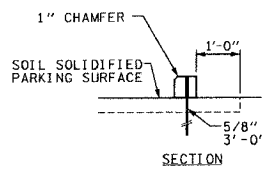


⑥ GATE, SPECIAL 6'-0" ELEVATION  
SCALE: 1/2"=1'-0"

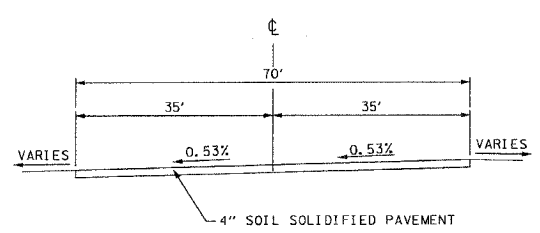
NOTE: PROVIDE HOOK ON NEXT POST NORTH TO SECURE GATE IN OPEN POSITION.



⑨ WOOD BUMPER BLOCKS DETAILS  
SCALE: 1/2"=1'-0"



⑩ PROPOSED TYPICAL SECTION (DRIVEWAY)  
STA. 0+00.00 TO 1+11.70  
\* WIDTH VARIES AT ENTRANCE

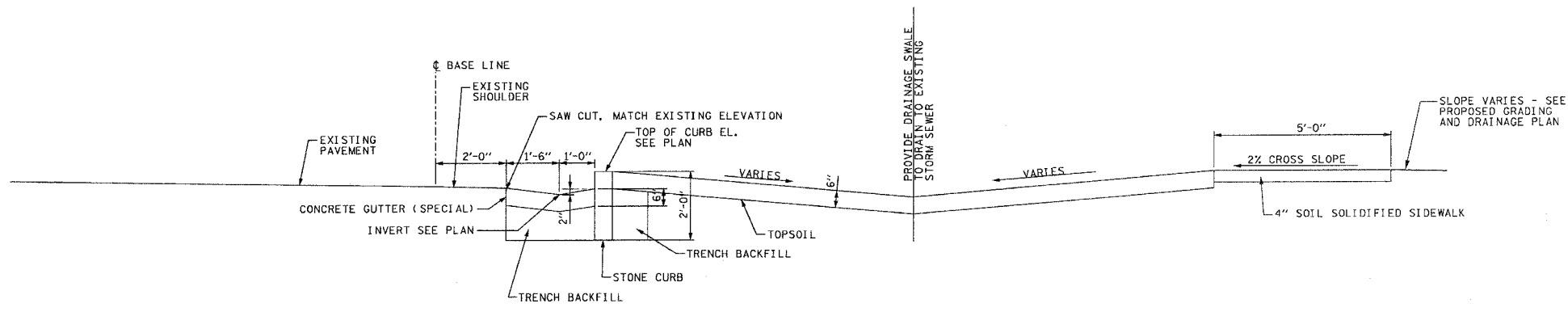


⑪ PROPOSED TYPICAL SECTION (PARKING LOT)  
STA. 1+11.70 TO 1+76.70

NOTE:  
1. MICROSTATION FILES OF THIS PROJECT WILL BE MADE AVAILABLE TO THE CONTRACTOR, IF THERE IS A CONFLICT BETWEEN THE ELECTRONIC FILES AND THE PRINTED CONTRACT PLANS AND DOCUMENTS. THE PRINTED CONTRACT PLANS AND DOCUMENTS SHALL TAKE PRECEDENCE OVER THE ELECTRONIC FILES. THE CONTRACTOR SHALL ACCEPT ALL RISK ASSOCIATED WITH USING THE ELECTRONIC FILES AND SHALL HOLD THE DEPARTMENT HARMLESS FOR ANY ERRORS OR OMISSIONS IN THE ELECTRONIC FILES AND THE DATA CONTAINED THEREIN. ERRORS OR DELAYS RESULTING FROM THE USE OF THE ELECTRONIC FILES BY THE CONTRACTOR SHALL NOT RESULT IN AN EXTENSION OF TIME FOR ANY INTERIM OR FINAL COMPLETION DATE OR SHALL NOT BE CONSIDERED CAUSE FOR ADDITIONAL COMPENSATION. THE CONTRACTOR SHALL NOT USE, SHARE, OR DISTRIBUTE THESE ELECTRONIC FILES EXCEPT FOR THE PURPOSE OF CONSTRUCTION OF THIS CONTRACT. ANY CLAIMS BY THIRD PARTIES DUE TO USE OR ERRORS SHALL BE THE SOLE RESPONSIBILITY OF THE CONTRACTOR. THE CONTRACTOR SHALL INCLUDE THIS DISCLAIMER WITH THE TRANSFER OF THESE ELECTRONIC FILES TO ANY OTHER PARTIES AND SHALL INCLUDE APPROPRIATE LANGUAGE BINDING THEM TO SIMILAR RESPONSIBILITIES.

2. COMMITMENTS ARE NOT TO BE ALTERED WITHOUT WRITTEN APPROVAL OF ALL PARTIES TO WHICH THE COMMITMENT WAS MADE.

COMMITMENTS:  
1. THE CONTRACTOR IS TO CONTACT JARROT MANSION STATE HISTORIC SITE MANAGER MOLLY MCKENZIE @ (618) 332-1782 TO COORDINATE CONSTRUCTION SCHEDULE.



⑫ PROPOSED TYPICAL SECTION (BASE LINE)  
STA. 0+73.23 TO 2+14.50

REVISIONS	
NAME	DATE

ILLINOIS DEPARTMENT OF TRANSPORTATION  
DETAILS  
IDOT / JHPA  
JARROT MANSION  
STATE HISTORIC SITE

SCALE: 1:20  
DATE: 4-12-06  
DRAWN BY: EJR  
CHECKED BY: KCM

DISTRICT PROJECT ENGINEER - LANCE KIDD

.../.../... 7/7/2006 8:25:51 AM