

F.A.P. RTE.	SECTION	COUNTY	TOTAL SHEETS	SHEET NO.
350	57B-31	COOK	62	11
STA.	TO STA.			
FED. ROAD DIST. NO.	ILLINOIS	FED. AID PROJECT		

CONTRACT NO. 60440

MAINTENANCE OF TRAFFIC NOTES

- (1) ALL OF THE TRAFFIC CONTROL DEVICES SHALL BE IN PLACE BEFORE CONSTRUCTION IS STARTED.
- (2) THE TRAFFIC CONTROL PLANS SHALL SERVE AS A GUIDE FOR SAFE DIVERSION OF TRAFFIC DURING EXECUTION OF THIS CONTRACT. HOWEVER, THE CONTRACTOR MAY IMPROVE OR MODIFY THE TRAFFIC CONTROL PLANS TO MEET CONSTRUCTION NEEDS BUT NOT AT THE EXPENSE OF PUBLIC SAFETY OR CONVENIENCE. ANY CHANGES TO THE TRAFFIC CONTROL PLAN SHALL BE SUBMITTED TO THE ENGINEER FOR APPROVAL.
- (3) THE ENGINEER SHALL BE INFORMED 48 HOURS IN ADVANCE OF ANY CHANGE TO THE STAGING PLANS.
- (4) THE CONTRACTOR SHALL MAINTAIN A MINIMUM OF ONE THROUGH LANE IN EACH DIRECTION THROUGHOUT THE PROJECT AREA AT ALL TIMES. FLAGGERS SHALL BE USED WHEN TEMPORARY ONE LANE IS REQUIRED TO MAINTAIN TWO-WAY TRAFFIC DURING CONSTRUCTION ACTIVITIES.
- (5) THE CONTRACTOR SHALL BE REQUIRED TO MAINTAIN ACCESS TO ALL ENTRANCES, APPROACHES, SIDE ROADS AND TEMPORARY ROADS WITHIN THE PROJECT LIMITS.
- (6) TYPE II BARRICADES OR DRUMS WITH STEADY BURNING LIGHTS SHALL BE PROVIDED AS SHOWN IN THE PLANS AND SPACED 50 FT CENTER TO CENTER ON TANGENT, AND 25 FT CENTER TO CENTER ON TAPERS AND CURVES.
- (7) ALL EXISTING SIGNS THAT CONFLICT WITH THE TRAFFIC CONTROL PLAN SHALL BE COVERED OR REMOVED IN ACCORDANCE WITH ARTICLE 107.25 OF THE STANDARD SPECIFICATIONS.
- (8) THE CONTRACTOR SHALL PROVIDE, INSTALL, MAINTAIN AND REMOVE ALL SIGNS AND SIGN SUPPORTS REQUIRED FOR TRAFFIC CONTROL AND PROTECTION. THIS WORK SHALL NOT BE PAID FOR SEPARATELY BUT SHALL BE INCLUDED IN THE CONTRACT UNIT PRICE PER LUMP SUM FOR "TRAFFIC CONTROL AND PROTECTION SPECIAL".
- (9) ALL TEMPORARY INFORMATION SIGNS SHALL BE PAID FOR SEPARATELY IN THE UNIT PRICE PER SQUARE FEET FOR "TEMPORARY INFORMATION SIGNING".
- (10) BARRICADES: THE CONTRACTOR SHALL PROVIDE AND INSTALL TWO (2) WEIGHTED SANDBAGS ON EACH TYPE I OR TYPE II BARRICADE USED - ONE (1) WEIGHTED SAND BAG ACROSS EACH BOTTOM RAIL.
- (11) FOR BRIDGE CONSTRUCTION STAGING, SEE STRUCTURAL PLANS.
- (12) ANY SAW CUTTING OF THE EXISTING PAVEMENT FOR STAGE CONSTRUCTION SHALL BE INCLUDED IN THE CONTRACT UNIT PRICE PER SQUARE YARD FOR "PAVEMENT REMOVAL".

MAINTENANCE OF TRAFFIC DESCRIPTION

- STAGE 1 CONSTRUCTION
- (1) FROM STA. 20+23.42 TO STA. 27+00 RECONSTRUCT PROPOSED SOUTHBOUND PAVEMENTS
 - (2) CONSTRUCT WEST SIDE OF ILLINOIS RTE 50 OVER NORTH BRANCH CHICAGO RIVER BRIDGE
 - (3) PERFORM DRAINAGE IMPROVEMENTS ALONG MAINLINE AT LOCATIONS SHOWN IN THE PLANS.

MAINTENANCE OF TRAFFIC
REDUCE EXISTING TWO LANES IN EACH DIRECTION TO ONE ONE LANE IN EACH DIRECTION AND SHIFT SOUTHBOUND LANE TO EAST SIDE OF ROADWAY CENTERLINE AS SHOWN IN THE PLANS.

- STAGE 2 CONSTRUCTION
- (1) FROM STA. 20+23.42 TO STA. 27+00 RECONSTRUCT PROPOSED NORTHBOUND PAVEMENTS
 - (2) CONSTRUCT EAST SIDE OF ILLINOIS RTE 50 OVER NORTH BRANCH CHICAGO RIVER BRIDGE
 - (3) DRAINAGE IMPROVEMENTS ALONG MAINLINE AT LOCATIONS SHOWN IN THE PLANS.
 - (4) RELOCATE EXISTING WATERMAIN AS SHOWN IN THE PLANS.

MAINTENANCE OF TRAFFIC
REDUCE EXISTING TWO LANES IN EACH DIRECTION TO ONE ONE LANE IN EACH DIRECTION AND SHIFT NORTHBOUND LANE TO WEST SIDE OF ROADWAY CENTERLINE AS SHOWN IN THE PLANS.

- STAGE 3 CONSTRUCTION
- (1) FROM STA. 27+00 TO STA. 28+00 MILL AND RESURFACE PAVEMENT
 - (2) FROM STA. 20+23.42 TO STA. 28+00 INSTALL FINAL PAVEMENT MARKING AND LANDSCAPING

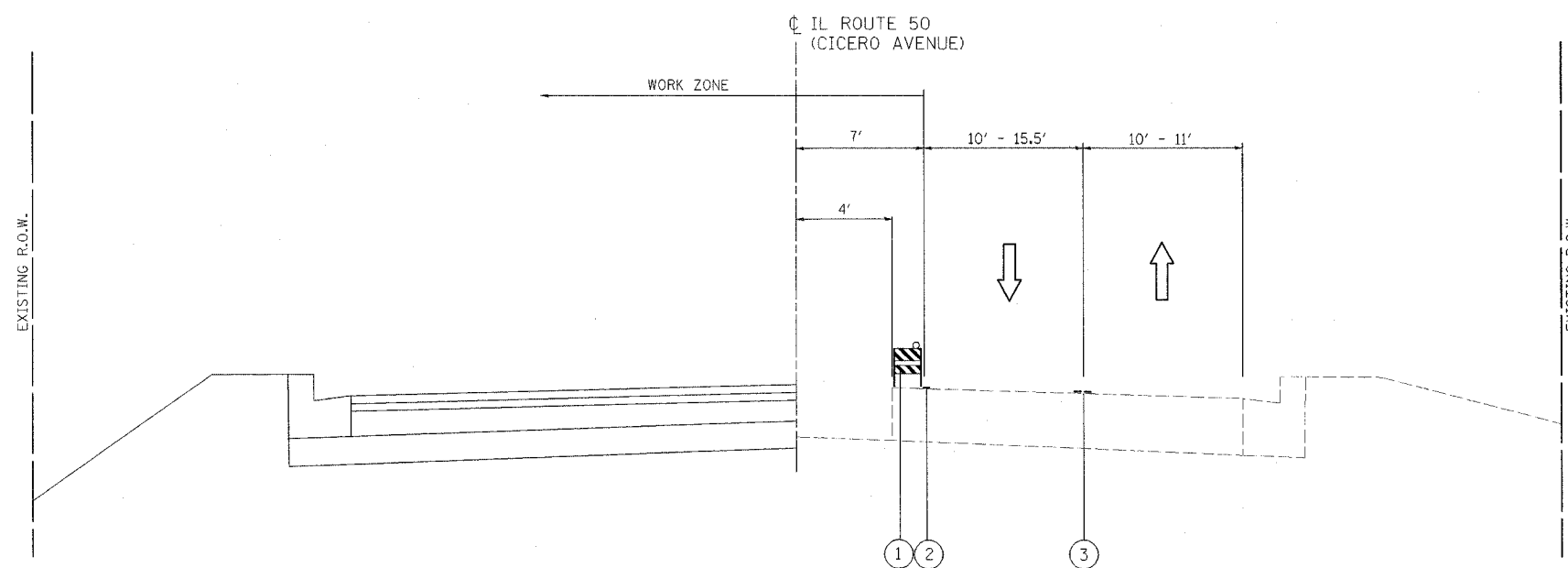
MAINTENANCE OF TRAFFIC
UTILIZE IDOT TRAFFIC CONTROL STANDARD 701606.

REVISIONS	
NAME	DATE

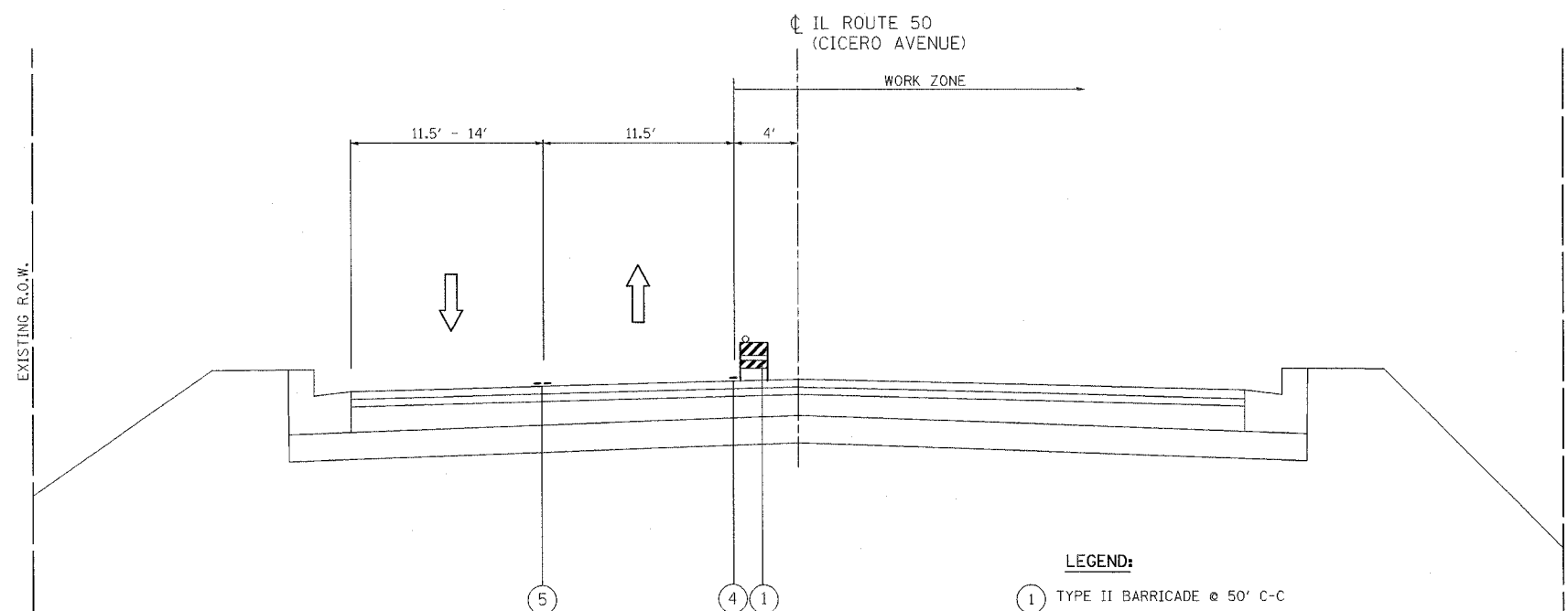
ILLINOIS DEPARTMENT OF TRANSPORTATION
ILLINOIS ROUTE 50 (CICERO AVENUE) OVER
NORTH BRANCH CHICAGO RIVER

SUGGESTED STAGES OF CONSTRUCTION
AND TRAFFIC CONTROL
TYPICAL SECTIONS

SCALE: NONE
DATE AUGUST 18, 2006
DRAWN BY CLW
CHECKED BY AAC



STAGE I
(LOOKING NORTH)



STAGE II
(LOOKING NORTH)

LEGEND:

- ① TYPE II BARRICADE @ 50' C-C
- ② TEMPORARY PAVEMENT MKG, 4" WHITE
- ③ TEMPORARY PAVEMENT MKG, 4" DBL YELLOW @ 11" C-C
- ④ PAVEMENT MARKING TAPE, TY III, 4" WHITE
- ⑤ PAVEMENT MARKING TAPE, TY III, 4" DBL YELLOW @ 11" C-C

PATRICK
ENGINEERING INC.
LISLE, ILLINOIS