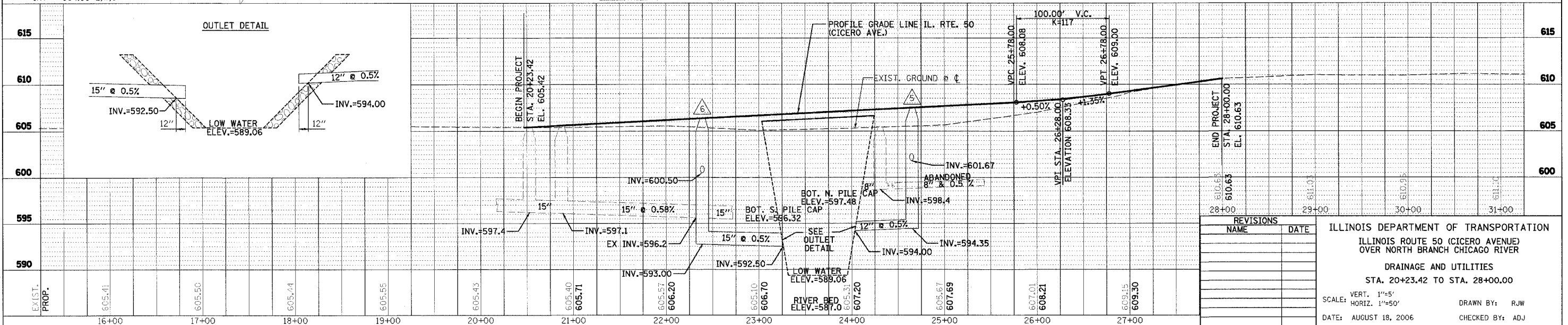
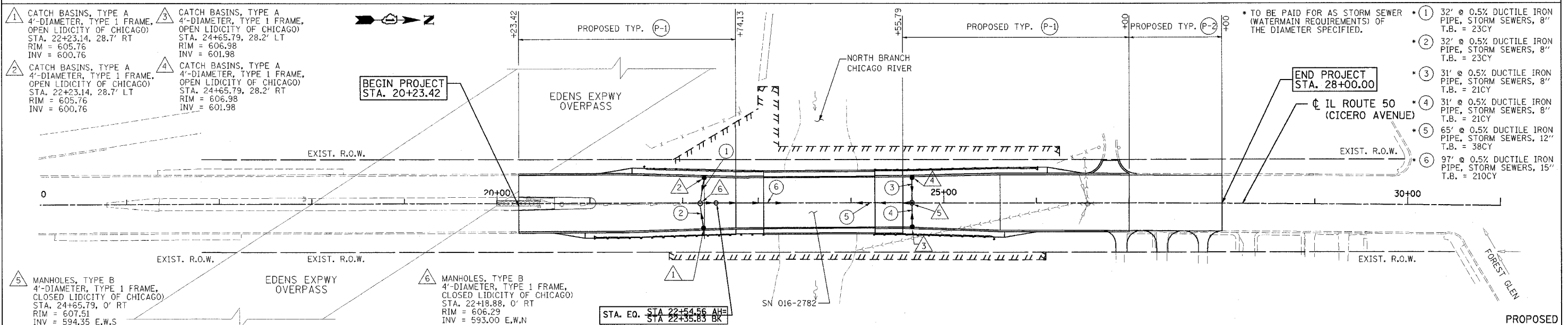
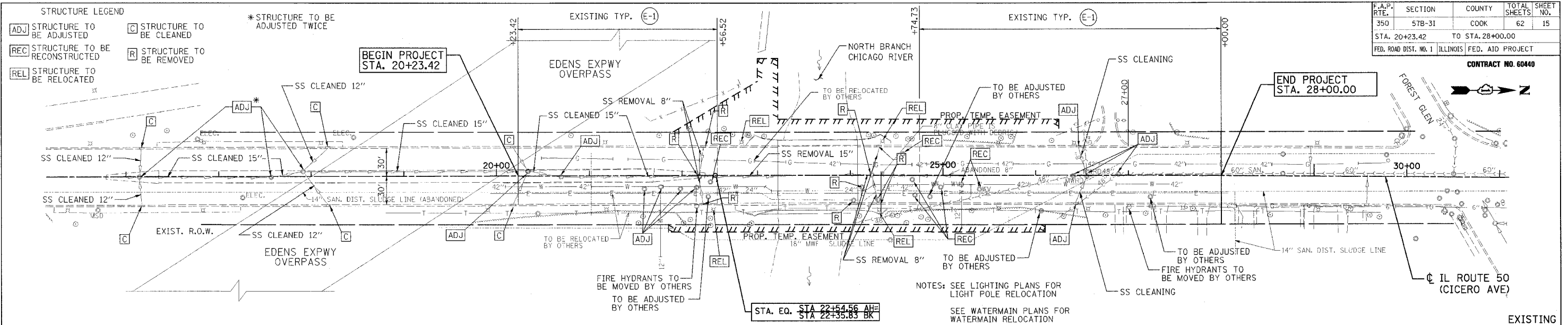


F.A.P. RTE.	SECTION	COUNTY	TOTAL SHEETS	SHEET NO.
350	57B-31	COOK	62	15
STA. 20+23.42		TO STA. 28+00.00		
FED. ROAD DIST. NO. 1		ILLINOIS		FED. AID PROJECT

CONTRACT NO. 60440



REVISIONS	
NAME	DATE

ILLINOIS DEPARTMENT OF TRANSPORTATION
 ILLINOIS ROUTE 50 (CICERO AVENUE)
 OVER NORTH BRANCH CHICAGO RIVER
 DRAINAGE AND UTILITIES
 STA. 20+23.42 TO STA. 28+00.00
 SCALE: VERT. 1"=5'
 HORIZ. 1"=50'
 DATE: AUGUST 18, 2006
 DRAWN BY: RJW
 CHECKED BY: ADJ

PATRICK
 ENGINEERING INC.
 Lisle, Illinois

h:\open\rdwy_1\lisle\08/18/2006 09:50:04 AM 0:\D01\9260_B0\Drawings\RDWY\sh\ts\dra\5_dra_01a.dgn