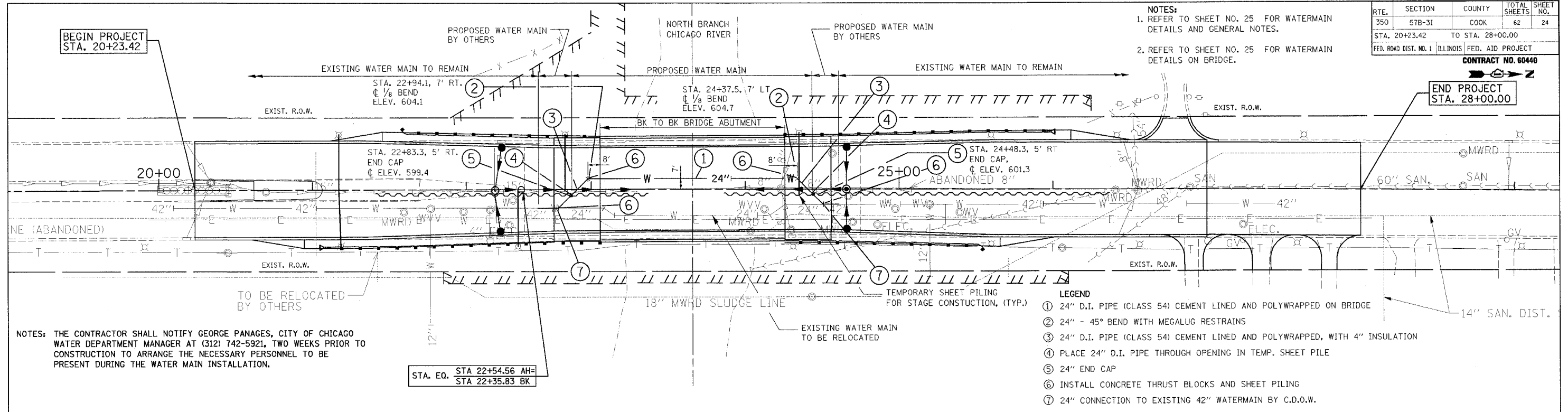


ROUTE	SECTION	COUNTY	TOTAL SHEETS	SHEET NO.
350	57B-31	COOK	62	24
STA. 20+23.42		TO STA. 28+00.00		
FED. ROAD DIST. NO. 1 ILLINOIS FED. AID PROJECT				

CONTRACT NO. 60440

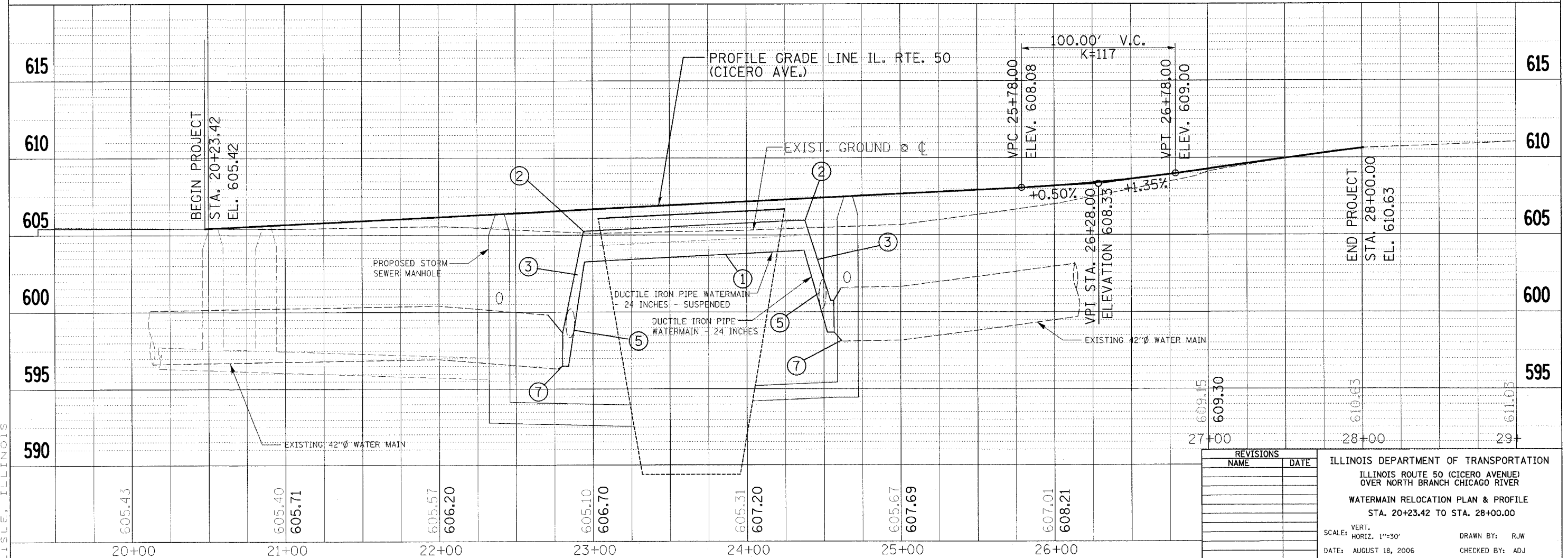
NOTES:
 1. REFER TO SHEET NO. 25 FOR WATERMAIN DETAILS AND GENERAL NOTES.
 2. REFER TO SHEET NO. 25 FOR WATERMAIN DETAILS ON BRIDGE.



NOTES: THE CONTRACTOR SHALL NOTIFY GEORGE PANAGES, CITY OF CHICAGO WATER DEPARTMENT MANAGER AT (312) 742-5921, TWO WEEKS PRIOR TO CONSTRUCTION TO ARRANGE THE NECESSARY PERSONNEL TO BE PRESENT DURING THE WATER MAIN INSTALLATION.

LEGEND

- ① 24" D.I. PIPE (CLASS 54) CEMENT LINED AND POLYWRAPPED ON BRIDGE
- ② 24" - 45° BEND WITH MEGALUG RESTRAINS
- ③ 24" D.I. PIPE (CLASS 54) CEMENT LINED AND POLYWRAPPED, WITH 4" INSULATION
- ④ PLACE 24" D.I. PIPE THROUGH OPENING IN TEMP. SHEET PILE
- ⑤ 24" END CAP
- ⑥ INSTALL CONCRETE THRUST BLOCKS AND SHEET PILING
- ⑦ 24" CONNECTION TO EXISTING 42" WATERMAIN BY C.D.O.W.



REVISIONS	
NAME	DATE

ILLINOIS DEPARTMENT OF TRANSPORTATION
 ILLINOIS ROUTE 50 (CICERO AVENUE)
 OVER NORTH BRANCH CHICAGO RIVER
 WATERMAIN RELOCATION PLAN & PROFILE
 STA. 20+23.42 TO STA. 28+00.00
 SCALE: VERT. 1"=30'
 DATE: AUGUST 18, 2006
 DRAWN BY: RJW
 CHECKED BY: ADJ

PATRICK
 ENGINEERING INC.
 LISLE, ILLINOIS