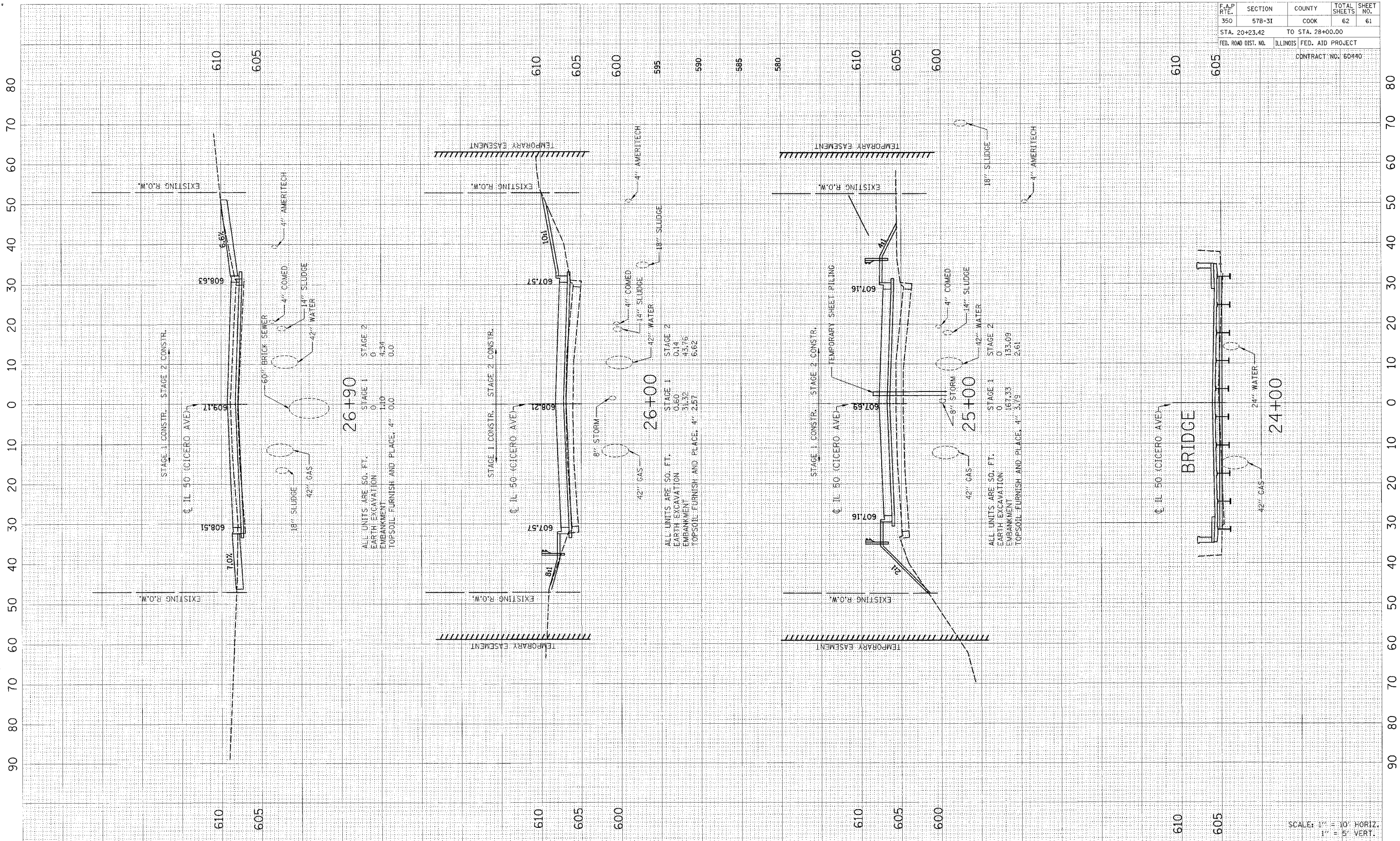


DATE - TIME
 DGN-SPEC

F.A.P. RTE.	SECTION	COUNTY	TOTAL SHEETS	SHEET NO.
350	57B-3I	COOK	62	61
STA. 20+23.42		TO STA. 28+00.00		
FED. ROAD DIST. NO.		ILLINOIS	FED. AID PROJECT	
CONTRACT NO. 60440				



CROSS SECTIONS - STA 24+00 to STA 26+90

SCALE: 1" = 10' HORIZ.
 1" = 5' VERT.