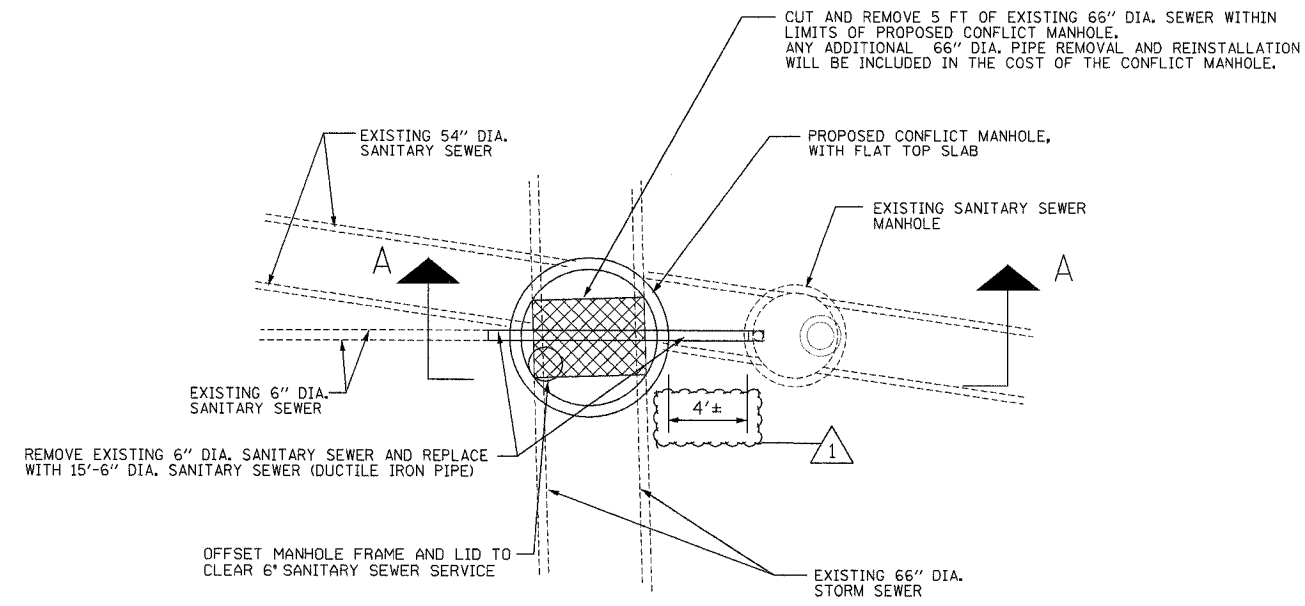
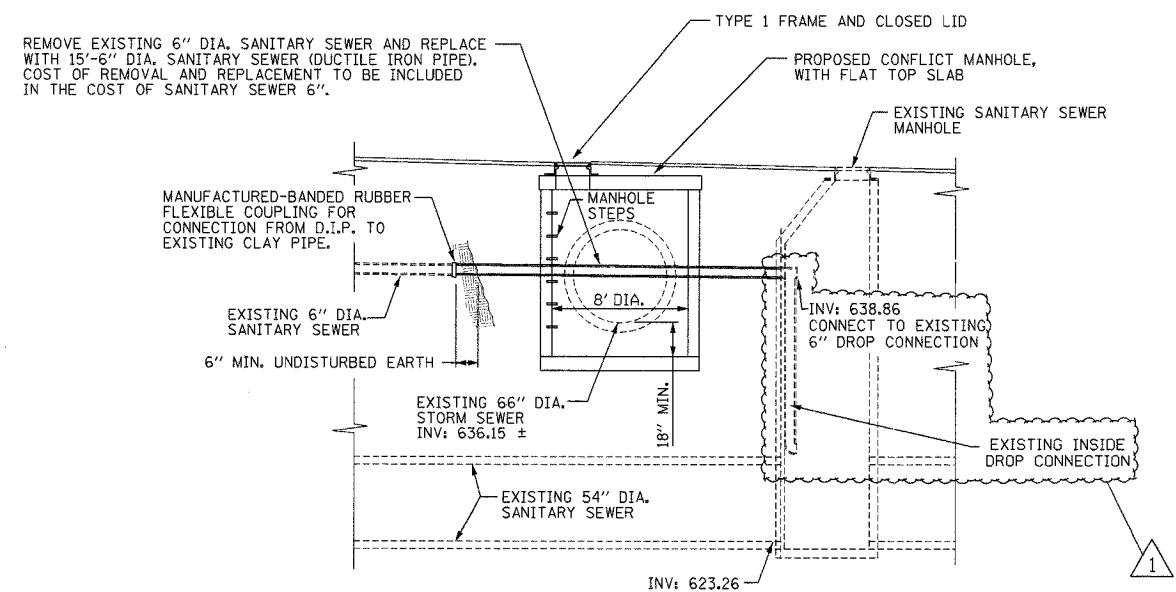


F.A. ROUTE NO.	SECTION	COUNTY	TOTAL SHEETS	SHEET NO.
351	(537&537 X) T	COOK	8	6
FED. ROAD DIST. NO.		ILLINOIS FED. AID PROJECT		



ENLARGED PLAN "A"

SCALE: 1"=5'



SECTION A-A

SCALE: 1"=5'

NOTES:

1. REFER TO HIGHWAY STANDARDS 602416, 602701 AND 604001 FOR ADDITIONAL DETAILS.
2. THE CONTRACT UNIT PRICE FOR CONFLICT MANHOLES SHALL INCLUDE THE COST OF FURNISHING AND PLACING THE AGGREGATE BASE, MANHOLE BASE AND BARREL SECTIONS, ADJUSTING RINGS, TYPE 1 FRAME AND LID, AND CAST IRON STEPS OF THE DIAMETER SHOWN.
3. THE CONTRACT UNIT PRICE FOR SANITARY SEWER 6" WILL INCLUDE THE COST FOR REMOVING AND RECONNECTING EXISTING SEWERS INCLUDING FLEXIBLE CONNECTORS.



GRAEF, ANHALT, SCHLOEMER & ASSOCIATES, INC.  
CHICAGO, ILLINOIS

REVISIONS		ILLINOIS DEPARTMENT OF TRANSPORTATION FAP 351 (US 6 / 159TH STREET) AT METRA ENTRANCE W/O IL 50 SECTION: (537 & 537 X) T SEWER REPAIR
NAME	DATE	
RJS	10/23/06	DETAILS SCALE: 1"=5' DATE: 9/14/06 DRAWN BY: WS CHECKED BY: PJ