


| F.A. ROUTE NO. | SECTION | COUNTY | TOTAL SHEETS | SHEET NO. |
|---------------------|-------------|----------|------------------|-----------|
| 351 | 637&537 X T | COOK | 8 | 2 |
| FED. ROAD DIST. NO. | | ILLINOIS | FED. AID PROJECT | |


INDEX OF SHEETS

- 1 TITLE SHEET
- 2 INDEX OF DRAWINGS, HIGHWAY STANDARDS, GENERAL NOTES AND BITUMINOUS MIXTURE REQUIREMENTS
- 3 SUMMARY OF QUANTITIES
- 4 PLAN
-  5 *TRAFFIC CONTROL AND PROTECTION FOR TEMPORARY DETOUR*
- 6 DETAILS
- 7 DRIVEWAY DETAILS
- 8 TEMPORARY INFORMATION SIGNING

STATE STANDARDS

| STD. NO. | DESCRIPTION |
|-----------|--|
| 000001 | STANDARD SYMBOLS, ABBREVIATIONS AND PATTERNS |
| 602416 | MANHOLE TYPE A 2.4 m (8') DIAMETER |
| 602701-01 | CAST IRON STEPS |
| 604001-02 | FRAME AND LIDS, TYPE 1 |
| 701701-04 | URBAN LANE CLOSURE MULTILANE INTERSECTION |
| 702001-00 | TRAFFIC CONTROL DEVICES |

GENERAL NOTES

- 1. BEFORE STARTING ANY EXCAVATION, THE CONTRACTOR SHALL CALL "J.U.L.I.E." (JOINT UTILITY LOCATION INFORMATION FOR EXCAVATION), (800) 892-0123 FOR FIELD LOCATIONS OF BURIED ELECTRIC, TELEPHONE, CABLE AND GAS FACILITIES. (48 HOUR NOTIFICATION IS REQUIRED).
- 2. THE CONTRACTOR SHALL COORDINATE CONSTRUCTION ACTIVITIES WITH UTILITY COMPANIES.
- 3. BARRICADES: THE CONTRACTOR SHALL PROVIDE AND INSTALL TWO (2) WEIGHTED SANDBAGS ON EACH TYPE I OR TYPE II BARRICADE USED - ONE (1) WEIGHTED SAND BAG ACROSS EACH BOTTOM RAIL.
- 4. ALL ELEVATIONS SHOWN ON THE PLANS ARE REFERENCED TO U.S.G.S. MEAN SEA LEVEL DATUM.
- 5. THE COST OF MAKING ANY SEWER CONNECTIONS TO AN EXISTING DRAINAGE STRUCTURE OR PIPE SHALL BE INCLUDED IN THE COST OF THE NEW CONFLICT MANHOLE.
-  6. THE CONTRACTOR SHALL CONTACT METRA AT LEAST 2 WEEKS PRIOR TO THE CLOSURE OF THE DRIVEWAY *TO ENABLE METRA TO INFORM ITS PASSENGERS OF THE CLOSURE AND DETOUR.*
- 7. UPON COMPLETION OF THE MANHOLE AND SERVICE INSTALLATION, THE SANITARY SEWER SERVICE WILL BE CLEANED. COST OF THIS WORK WILL NOT BE PAID FOR SEPARATELY BUT CONSIDERED INCIDENTAL TO THE CONTRACT.
- 8. SITE BORINGS INDICATE THAT SOME SITE SOILS HAVE MOISTURE CONTENTS OF 25% TO 27%. THEREFORE, ADDITIONAL SHORING OR TRENCH WALL STABILITY MAY BE NECESSARY DURING CONSTRUCTION.
- 9. RESTORATION OF THE SEWER WORK AREA SHALL BE INCIDENTAL TO THE MANHOLE AND SANITARY SEWER PAY ITEMS AND NO EXTRA COMPENSATION SHALL BE ALLOWED. ROADWAY SURFACES SUCH AS MEDIAN AND CURB SHALL BE REPLACED IN KIND. ALL DAMAGE TO MOWED LAWNS SHALL BE REPLACED WITH AN APPROVED SOD IN ACCORDANCE TO ARTICLE 252 OF THE STANDARD SPECIFICATION.

BITUMINOUS MIXTURE REQUIREMENTS

| OPERATION | ITEM | AC TYPE | VOIDS | MAX RAP % | MIX TYPE |
|------------------------------|---|----------|-------------|-----------|-----------------------------------|
| BITUMINOUS DRIVEWAY PAVEMENT | BITUMINOUS CONCRETE SURFACE COURSE, SUPERPAVE, MIX "C", N50 | PG 64-22 | 4% @ 50 GYR | 15% | SAME AS ITEM |
| | BITUMINOUS BASE COURSE, SUPERPAVE, 6" (PE) OR 8"(CE) | PG 58-22 | 2% @ 50 GYR | 50% | BITUMINOUS BASE COURSE, SUPERPAVE |


* IF RAP OPTION IS SELECTED, THE ASPHALT CEMENT GRADE MAY NEED TO BE ADJUSTED. THIS WILL BE DETERMINED BY THE ENGINEER.

THE UNIT WEIGHT USED TO CALCULATE ALL BITUMINOUS SURFACE MIXTURES IS 112 lbs/sqyd/ln.

| REVISIONS | | ILLINOIS DEPARTMENT OF TRANSPORTATION FAP 351 (US 6 / 159TH STREET) AT METRA ENTRANCE W/O IL 50 SECTION: (537 & 537 X) T SEWER REPAIR |
|-----------|------|---|
| NAME | DATE | |
| | | INDEX OF DRAWINGS, HIGHWAY STANDARDS, GENERAL NOTES AND BITUMINOUS MIXTURE REQUIREMENTS DRAWN BY: WS DATE: 9/14/06 CHECKED BY: PJ |
| | | |
| | | |
| | | |
| | | |



GRAEF, ANHALT, SCHLOEMER & ASSOCIATES, INC.
CHICAGO, ILLINOIS

 Rev. 10-23-06


CONTRACT NO. 60889

| | | | | |
|---------------------|---------------|---------------------------|--------------|-----------|
| F.A. ROUTE NO. | SECTION | COUNTY | TOTAL SHEETS | SHEET NO. |
| 351 | (537&537 X) T | COOK | 8 | 3 |
| FED. ROAD DIST. NO. | | ILLINOIS FED. AID PROJECT | | |

SUMMARY OF QUANTITIES

URBAN
100% STATE

| CODE NUMBER | PAY ITEM DESCRIPTION | UNIT | TOTAL QUANTITY | Y007 |
|-------------|---|-------|----------------|------|
| 20800150 | TRENCH BACKFILL | CU YD | 4 | 4 |
| 31101200 | SUB-BASE GRANULAR MATERIAL, TYPE B 4" | SQ YD | 55 | 55 |
| 44000100 | PAVEMENT REMOVAL | SQ YD | 55 | 55 |
| 55102200 | STORM SEWER REMOVAL 66" | FOOT | 5 | 5 |
| 70102550 | TRAFFIC CONTROL AND PROTECTION FOR TEMPORARY DETOUR | EACH | 1 | 1 |
| X0322256 | TEMPORARY INFORMATION SIGNING | SQ FT | 26 | 26 |
| X0324078 | CONFLICT MANHOLES | EACH | 1 | 1 |
| X3550500 | BITUMINOUS BASE COURSE SUPERPAVE 8" | SQ YD | 55 | 55 |
| X4066414 | BITUMINOUS CONCRETE SURFACE COURSE, SUPERPAVE, MIX "C", N50 | TON | 7 | 7 |
| Z0056800 | SANITARY SEWER 6" | FOOT | 15 | 15 |
| 67100100 | MOBILIZATION | L SUM | 1 | 1 |
| 70102635 | TRAFFIC CONTROL AND PROTECTION, STANDARD TO 101 | L SUM | 1 | 1 |

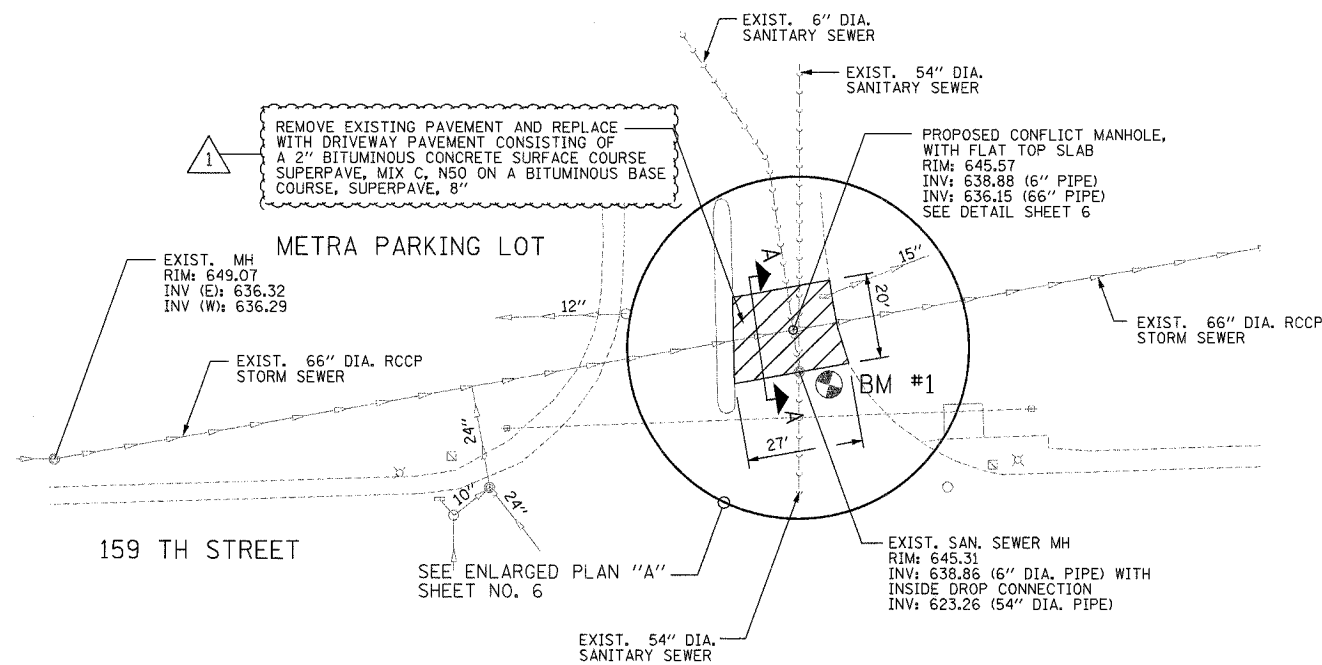
| | | |
|--|------|---|
| REVISIONS | | ILLINOIS DEPARTMENT OF TRANSPORTATION FAP 351 (US 6 / 159TH STREET) AT METRA ENTRANCE W/O IL 50 SECTION: (537 & 537 X) T SEWER REPAIR |
| NAME | DATE | |
| | | |
| | | |
| | | |
| | | |
| DRAWN BY: WS CHECKED BY: PJ DATE: 9/14/06 | | SUMMARY OF QUANTITIES |
|  GRAEF, ANHALT, SCHLOEMER & ASSOCIATES, INC. CHICAGO, ILLINOIS | | |

Rev. 10-23-06

REV.

CONTRACT NO. 60B89

| F.A. ROUTE NO. | SECTION | COUNTY | TOTAL SHEETS | SHEET NO. |
|---------------------|---------------|---------------------------|--------------|-----------|
| 351 | (537&537 X) T | COOK | 8 | 4 |
| FED. ROAD DIST. NO. | | ILLINOIS FED. AID PROJECT | | |



159 TH STREET

METRA PARKING LOT

PLAN

SCALE: 1"=20'

BM #1
RIM OF EXISTING SANITARY SEWER MANHOLE, ELEV. 645.31

1

| REVISIONS | | ILLINOIS DEPARTMENT OF TRANSPORTATION FAP 351 (US 6 / 159TH STREET) AT METRA ENTRANCE W/O IL 50 SECTION: (537 & 537 X) T SEWER REPAIR |
|-----------|----------|---|
| NAME | DATE | |
| RJS | 10/23/06 | PLAN SCALE: 1"=20' DATE: 9/14/06 DRAWN BY: WS CHECKED BY: PJ |
| | | |
| | | |
| | | |

GRAEF, ANHALT, SCHLOEMER & ASSOCIATES, INC.
CHICAGO, ILLINOIS

FILE: H:\Jobs2006\20063028-01\CAD\Site\dgn\00\PLAN01.dgn
DATE: 13-Sep-06 15:13

10-23-06

CONTRACT NO. 60B89

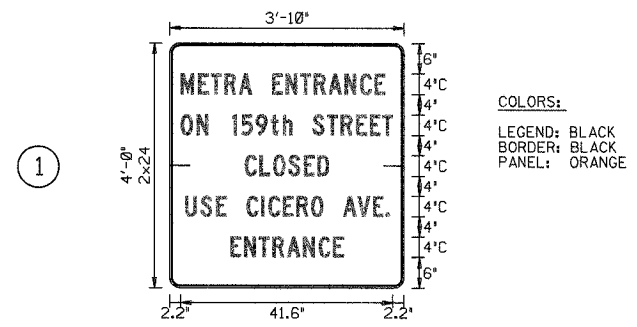
| F.A. ROUTE NO. | SECTION | COUNTY | TOTAL SHEETS | SHEET NO. |
|---------------------|---------------|----------|------------------|-----------|
| 351 | (537&537 X) T | COOK | 8 | 5 |
| FED. ROAD DIST. NO. | | ILLINOIS | FED. AID PROJECT | |

NOTES:

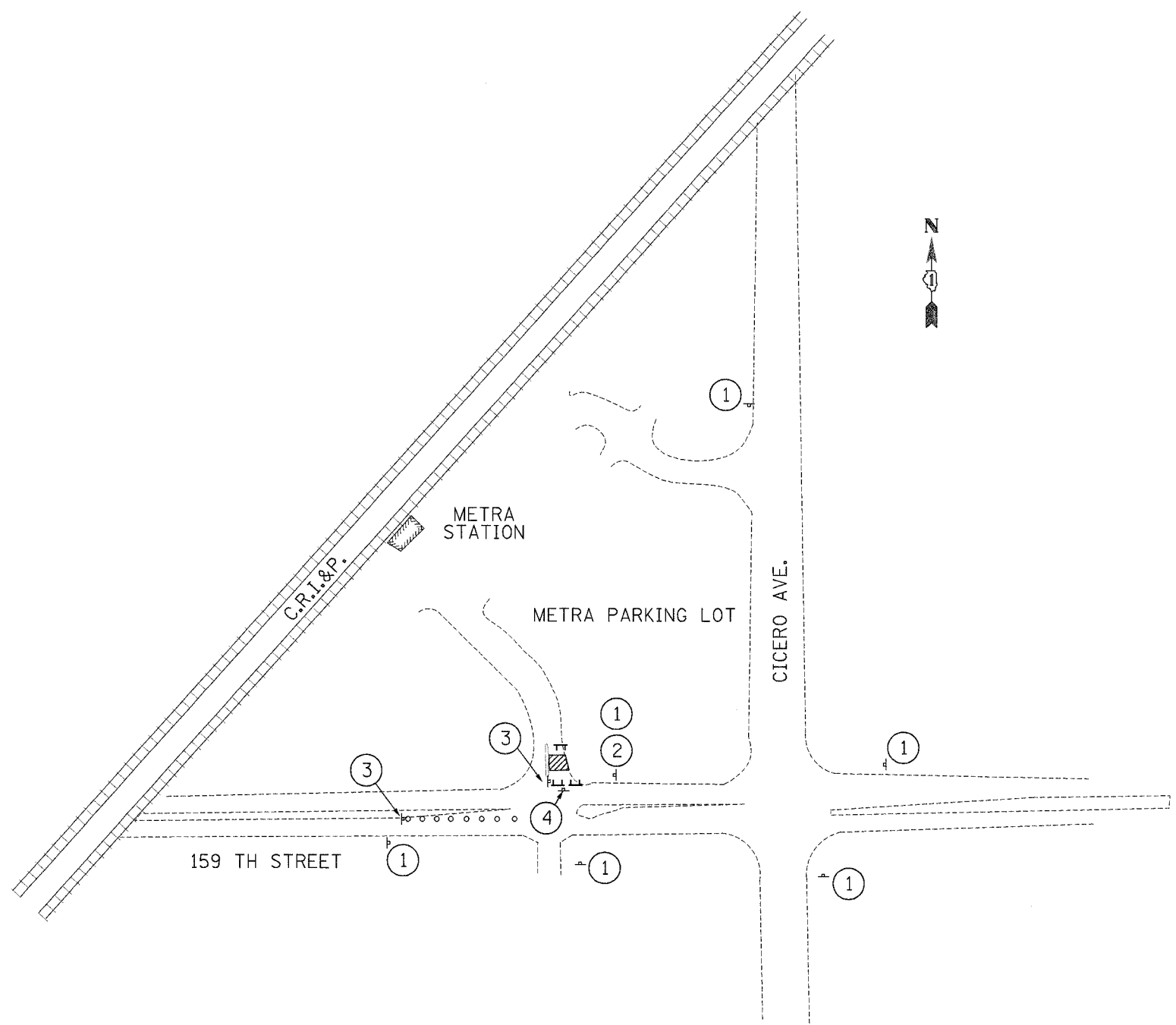
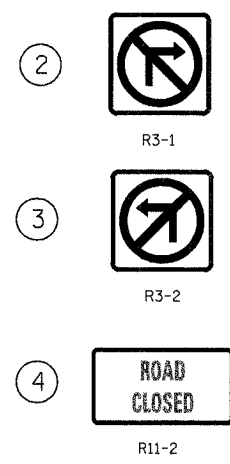
1. INSTALLATION AND MAINTENANCE OF BARRICADES IN THE 159TH STREET LEFT TURN LANE WILL BE PAID UNDER THE PAY ITEM "TRAFFIC CONTROL AND PROTECTION, STANDARD 701701".
2. CONTRACTOR SHALL NOTIFY METRA AT LEAST 2 WEEKS PRIOR TO CONSTRUCTION TO ENABLE METRA TO INFORM ITS PASSENGERS OF THE CLOSURE AND DETOUR.

LEGEND:

- WORK AREA
- SIGN
- DRUM OR BARRICADE
- TYPE III BARRICADE WITH FLASHING LIGHTS



COLORS:
 LEGEND: BLACK
 BORDER: BLACK
 PANEL: ORANGE

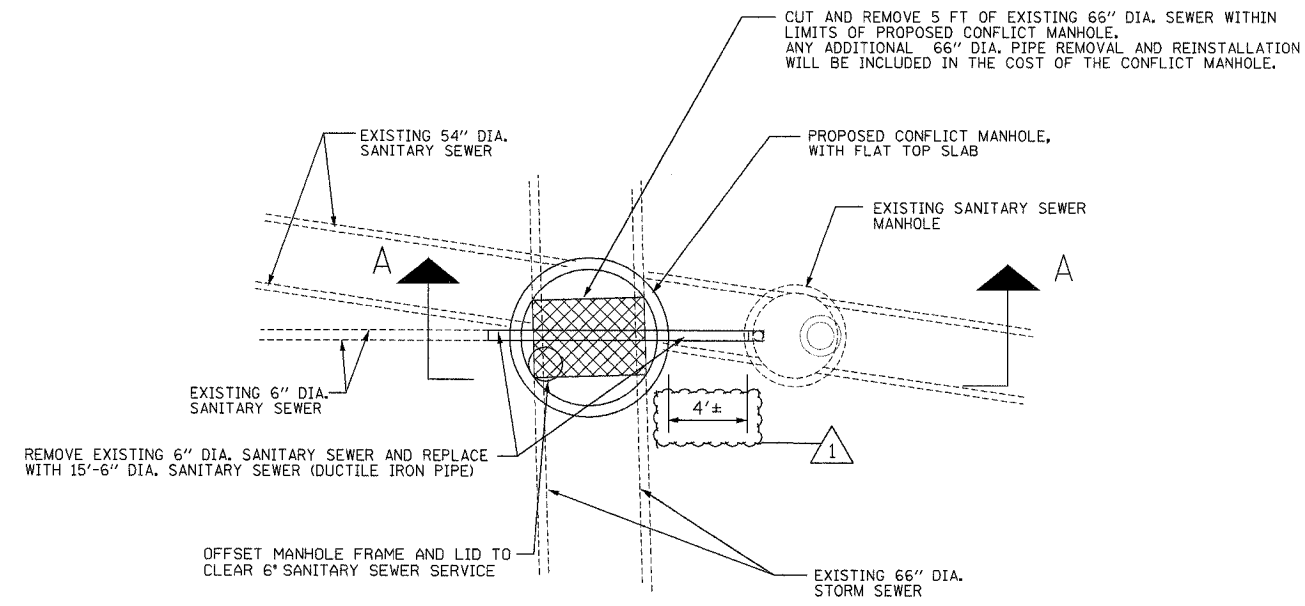


TRAFFIC CONTROL & PROTECTION
 N.T.S.

| REVISIONS | | ILLINOIS DEPARTMENT OF TRANSPORTATION FAP 351 (US 6 / 159TH STREET) AT METRA ENTRANCE W/O IL 50 SECTION: (537 & 537 X) T SEWER REPAIR |
|-----------|----------|---|
| NAME | DATE | |
| RJS | 10/23/06 | TRAFFIC CONTROL & PROTECTION FOR TEMPORARY DETOUR SCALE: N.T.S. DRAWN BY: WS DATE: 9/14/06 CHECKED BY: PJ |
| | | |
| | | |
| | | |

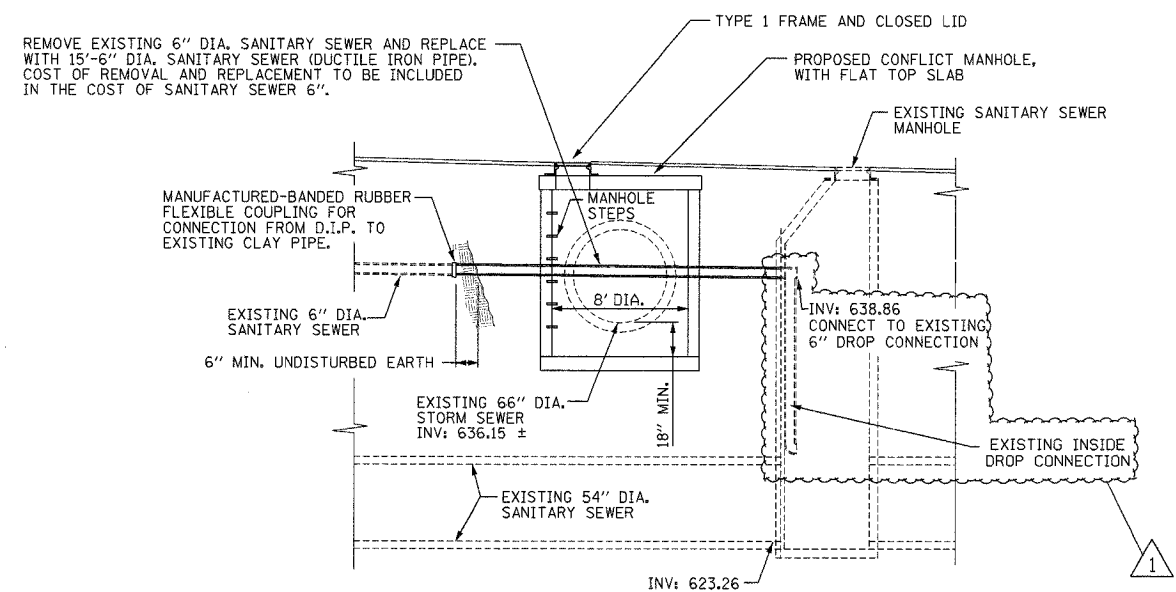
GRAEF, ANHALT, SCHLOEMER & ASSOCIATES, INC.
 CHICAGO, ILLINOIS

| F.A. ROUTE NO. | SECTION | COUNTY | TOTAL SHEETS | SHEET NO. |
|---------------------|---------------|---------------------------|--------------|-----------|
| 351 | (537&537 X) T | COOK | 8 | 6 |
| FED. ROAD DIST. NO. | | ILLINOIS FED. AID PROJECT | | |



ENLARGED PLAN "A"

SCALE: 1"=5'



SECTION A-A

SCALE: 1"=5'

NOTES:

1. REFER TO HIGHWAY STANDARDS 602416, 602701 AND 604001 FOR ADDITIONAL DETAILS.
2. THE CONTRACT UNIT PRICE FOR CONFLICT MANHOLES SHALL INCLUDE THE COST OF FURNISHING AND PLACING THE AGGREGATE BASE, MANHOLE BASE AND BARREL SECTIONS, ADJUSTING RINGS, TYPE 1 FRAME AND LID, AND CAST IRON STEPS OF THE DIAMETER SHOWN.
3. THE CONTRACT UNIT PRICE FOR SANITARY SEWER 6" WILL INCLUDE THE COST FOR REMOVING AND RECONNECTING EXISTING SEWERS INCLUDING FLEXIBLE CONNECTORS.

| REVISIONS | | ILLINOIS DEPARTMENT OF TRANSPORTATION FAP 351 (US 6 / 159TH STREET) AT METRA ENTRANCE W/O IL 50 SECTION: (537 & 537 X) T SEWER REPAIR |
|-----------|----------|---|
| NAME | DATE | |
| RJS | 10/23/06 | DETAILS SCALE: 1"=5' DATE: 9/14/06 DRAWN BY: WS CHECKED BY: PJ |
| | | |
| | | |
| | | |

GRAEF, ANHALT, SCHLOEMER & ASSOCIATES, INC.
CHICAGO, ILLINOIS