

CONTRACT NO. 62340

F.A. ROUTE NO.	SECTION	COUNTY	TOTAL SHEETS	SHEET NO.
533	119R-1-B	MCHENRY	77	1
FED. ROAD DIST. NO.		ILLINOIS FED. AID PROJECT		
				77+2=79

D-91-488-01

STATE OF ILLINOIS
DEPARTMENT OF TRANSPORTATION
DIVISION OF HIGHWAYS
PLANS FOR PROPOSED
FEDERAL AID HIGHWAY
F.A.P. ROUTE 533 (IL RTE 176)
OVER THE SOUTH BRANCH OF THE KISHWAUKEE RIVER
BRIDGE REMOVAL AND REPLACEMENT AND
ROADWAY PROFILE ADJUSTMENT
SECTION 119R-1-B
PROJECT NO. ACBRF-0533(088)
MCHENRY COUNTY
C-91-488-01

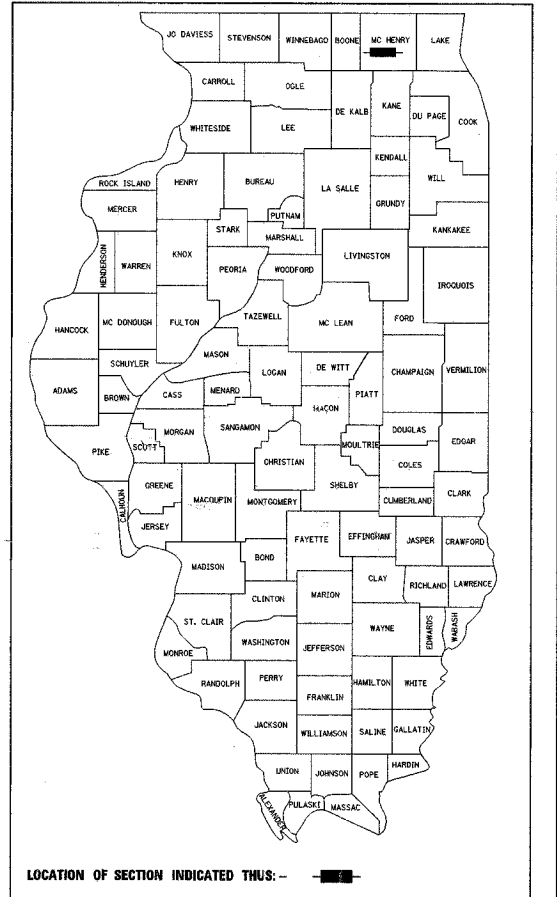
FOR INDEX OF SHEETS, SEE SHEET NO. 2

TRAFFIC DATA

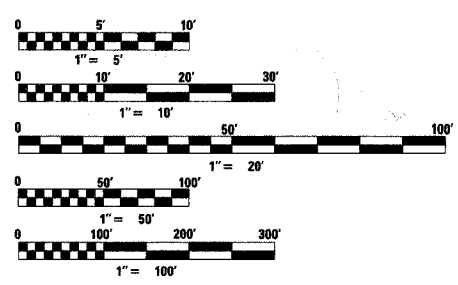
EXISTING ADT
8,300 (1999)
DESIGN ADT
9,960 (2019)
SPEED LIMIT 55 MPH

DESIGN DESIGNATION

OTHER PRINCIPAL ARTERIAL
9960 (19) ARTERIAL 3.73 (FD-20)

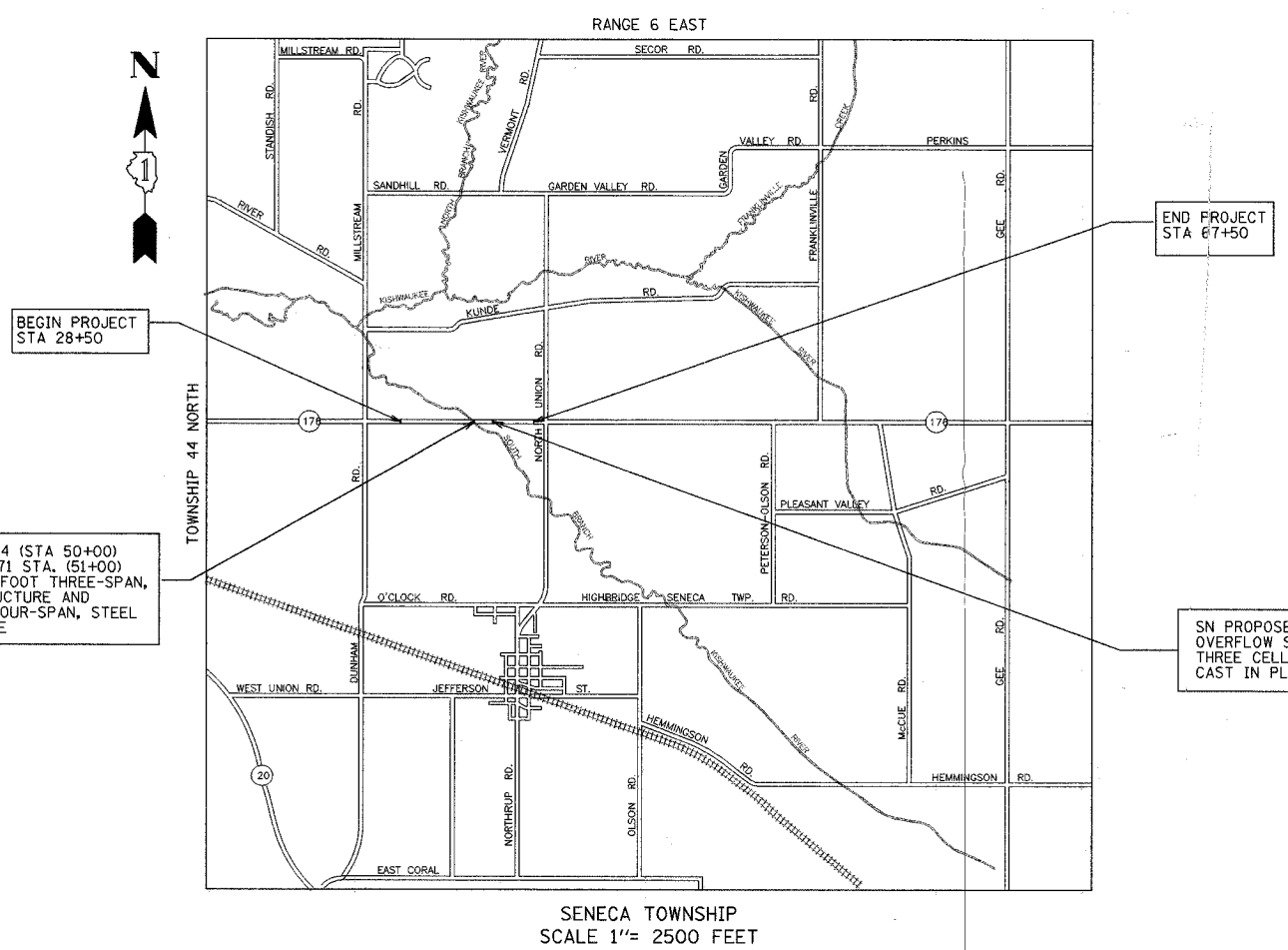


PROJECT LOCATED IN UNINCORPORATED MCHENRY COUNTY



FULL SIZE PLANS HAVE BEEN PREPARED USING STANDARD ENGINEERING SCALES, REDUCED SIZED PLANS WILL NOT CONFORM TO STANDARD SCALES, IN MAKING MEASUREMENTS ON REDUCED PLANS, THE ABOVE SCALES MAY BE USED.

J.U.L.I.E. JOINT UTILITY LOCATION INFORMATION FOR EXCAVATION 1-800-892-0123



S.N. EXISTING: 056-0004 (STA 50+00)
S.N. PROPOSED: 056-0071 STA. (51+00)
REMOVE EXISTING 78.3 FOOT THREE-SPAN, CLOSED ABUTMENT STRUCTURE AND REPLACE WITH A 410' FOUR-SPAN, STEEL PLATE GIRDER STRUCTURE.

END PROJECT STA 67+50

SN PROPOSED: 056-0073 STA 55+65
OVERFLOW STRUCTURE, THREE CELL, EACH 12' x 4' CAST IN PLACE BOX CULVERT

BEGIN PROJECT STA 28+50

CONTRACT NO. 62340

GROSS AND NET LENGTH OF PROJECT: 3900 FT (0.739 MI)

STATE OF ILLINOIS
DEPARTMENT OF TRANSPORTATION
DIVISION OF HIGHWAYS
 SUBMITTED 6-27 20 07
Dmr Okla
 DEPUTY DIRECTOR OF HIGHWAYS, REGION 1 ENGINEER
October 12, 2007
Eric E. Harsh
 ENGINEER OF DESIGN AND ENVIRONMENT
October 12, 2007
Milton R. Searles, Jr.
 DIRECTOR, DIVISION OF HIGHWAYS

PRINTED BY THE AUTHORITY OF THE STATE OF ILLINOIS

Ronald E. Jankauskas
 REGISTERED PROFESSIONAL ENGINEER OF ILLINOIS
 Date: 11-30-07

GRAEF, ANHALT, SCHLOEMER & ASSOCIATES, INC.
 ENGINEERS & SCIENTISTS
 8501 W. Higgins Road, Suite 280
 Chicago, Illinois 60631
 (773) 399-0112

DISTRICT ONE PLAN PREPARATION ENGINEER: JOSE DOMINGUEZ (847) 705-4232