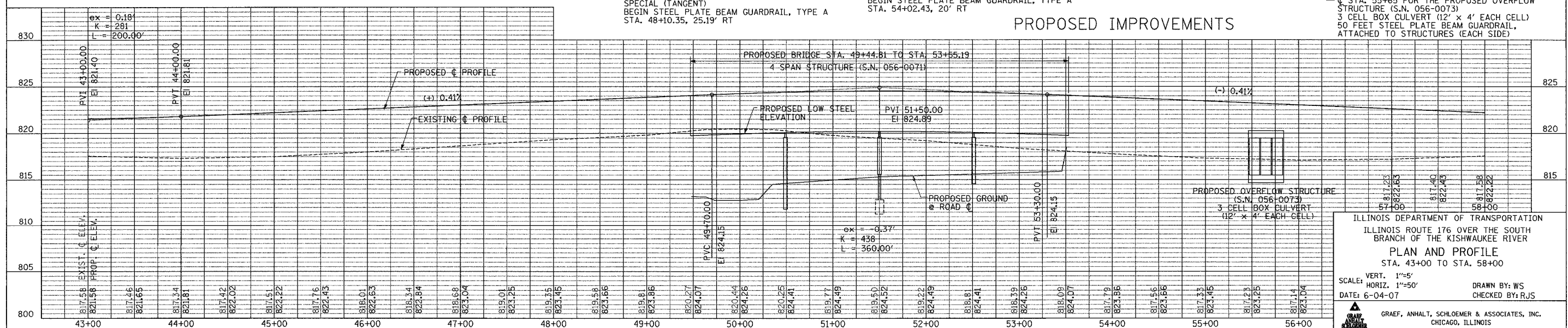
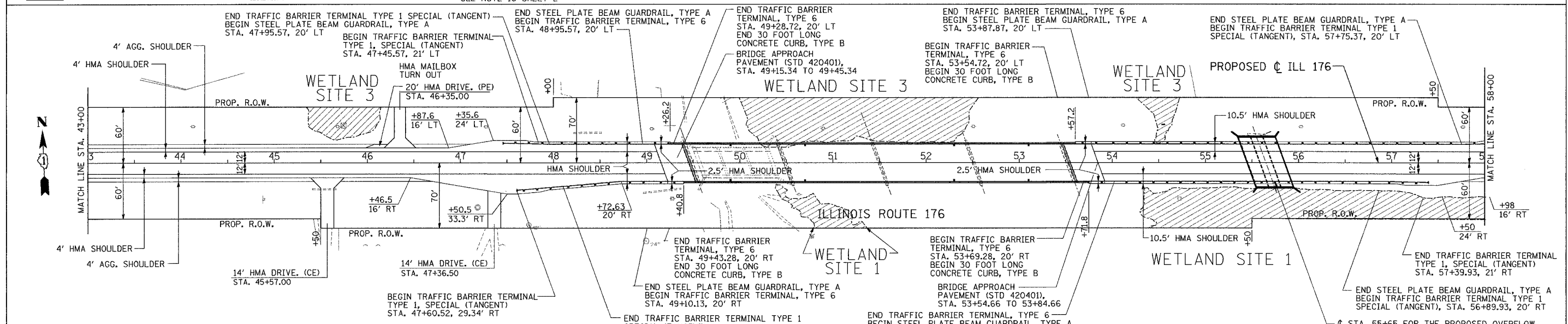
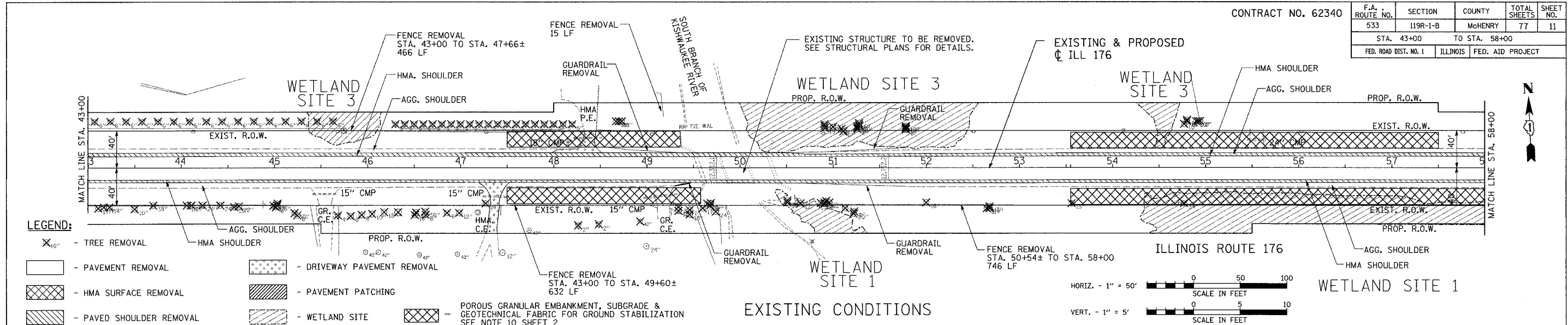


CONTRACT NO. 62340

F.A. ROUTE NO.	SECTION	COUNTY	TOTAL SHEETS	SHEET NO.
533	119R-1-B	McHENRY	77	11
STA. 43+00 TO STA. 58+00				
FED. ROAD DIST. NO. 1		ILLINOIS	FED. AID PROJECT	



ILLINOIS DEPARTMENT OF TRANSPORTATION  
 ILLINOIS ROUTE 176 OVER THE SOUTH BRANCH OF THE KISHAWAEE RIVER  
**PLAN AND PROFILE**  
 STA. 43+00 TO STA. 58+00

SCALE: VERT. 1"=5'  
 HORIZ. 1"=50'

DATE: 6-04-07  
 DRAWN BY: WS  
 CHECKED BY: RJS

GRAEF, ANHALT, SCHLOEMER & ASSOCIATES, INC.  
 CHICAGO, ILLINOIS