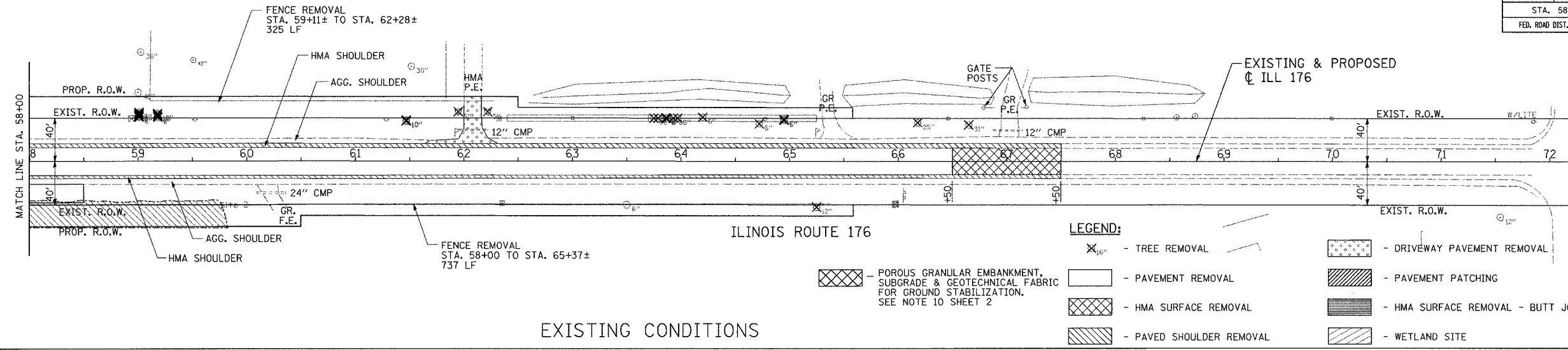


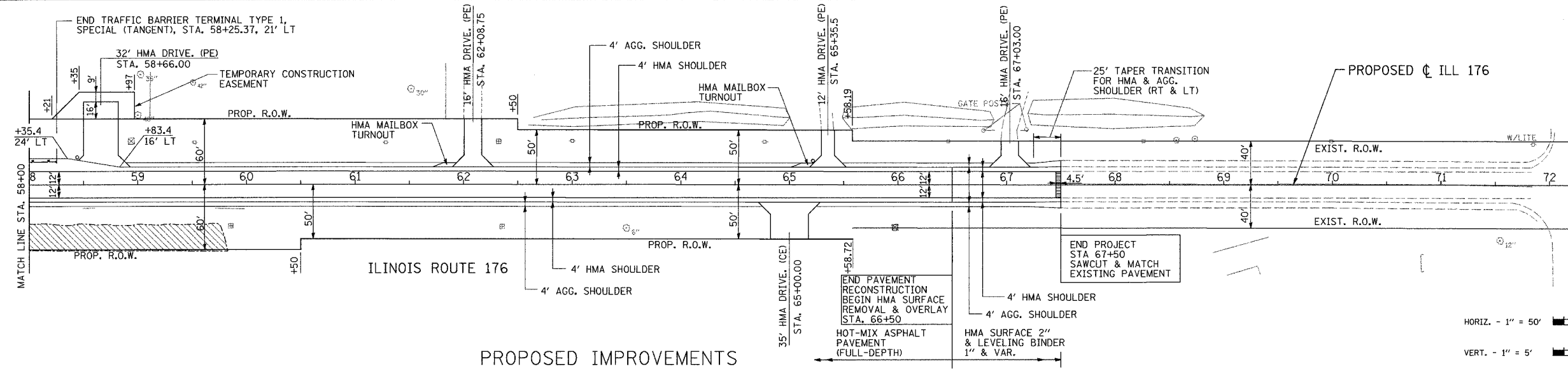
CONTRACT NO. 62340

F.A. ROUTE NO.	SECTION	COUNTY	TOTAL SHEETS	SHEET NO.
533	119R-1-B	McHENRY	77	12
STA. 58+00		TO STA. 72+00		
FED. ROAD DIST. NO. 1		ILLINOIS FED. AID PROJECT		

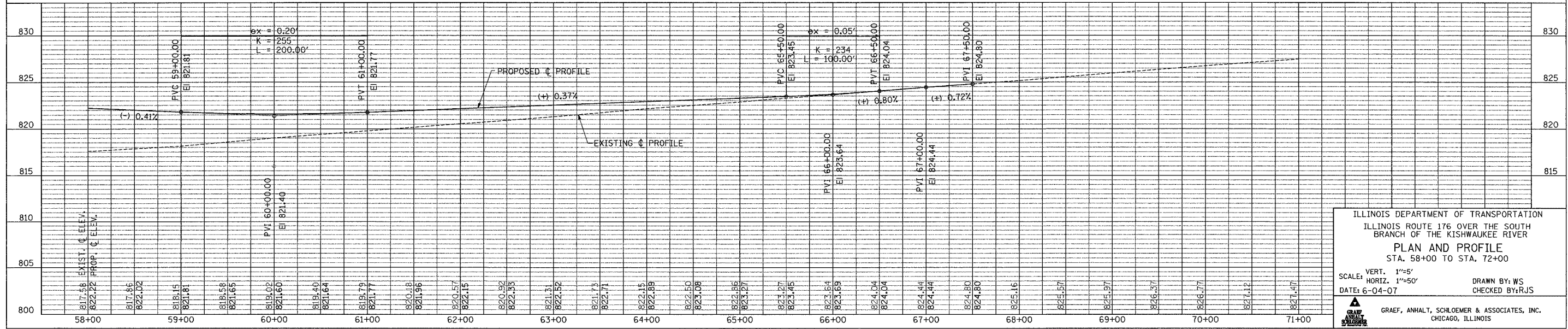
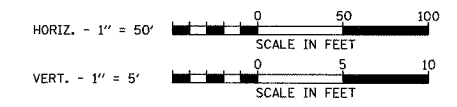


EXISTING CONDITIONS

- LEGEND:**
- TREE REMOVAL
 - DRIVEWAY PAVEMENT REMOVAL
 - PAVEMENT REMOVAL
 - HMA SURFACE REMOVAL
 - PAVED SHOULDER REMOVAL
 - PAVEMENT PATCHING
 - HMA SURFACE REMOVAL - BUTT JOINT
 - WETLAND SITE



PROPOSED IMPROVEMENTS



ILLINOIS DEPARTMENT OF TRANSPORTATION
 ILLINOIS ROUTE 176 OVER THE SOUTH
 BRANCH OF THE KISHWAUKEE RIVER
PLAN AND PROFILE
 STA. 58+00 TO STA. 72+00

SCALE: VERT. 1"=5'
 HORIZ. 1"=50'
 DATE: 6-04-07

DRAWN BY: WS
 CHECKED BY: RJS

GRAEF, ANHALT, SCHLOEMER & ASSOCIATES, INC.
 CHICAGO, ILLINOIS

FILE: H:\Jobs\2002\20024023\CAD\DOT_T\trans\dgr\00\plan04.dgn
 DAT: 04-Jun-07 11:21