

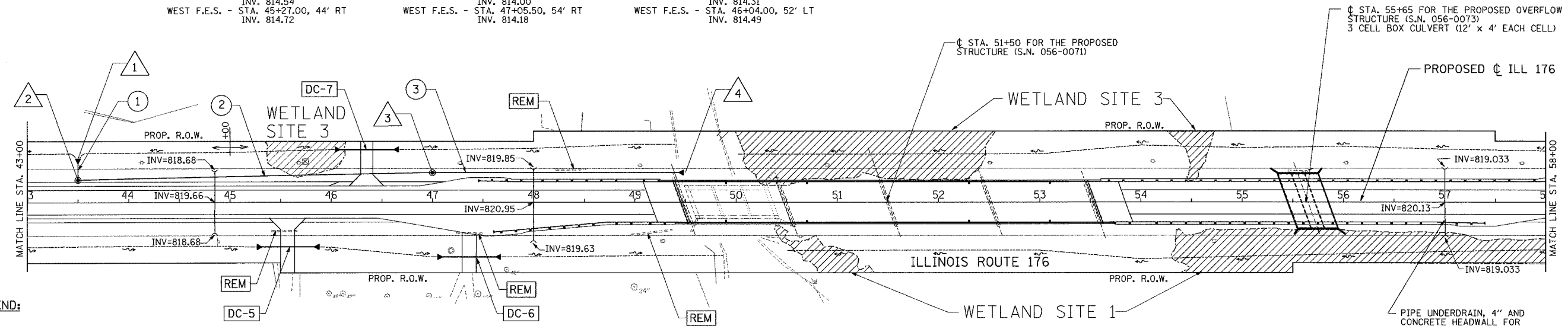
CONTRACT NO. 62340

F.A.U. ROUTE NO.	SECTION	COUNTY	TOTAL SHEETS	SHEET NO.
533	119R-1-B	McHENRY	77	14
ILLINOIS PROJECT				

DC-5
 PIPE CULVERT - 15" DIA.
 CLASS D, TYPE 1
 57' @ 0.30%
 EAST F.E.S. - STA. 45+88.00, 44' RT
 INV. 814.54
 WEST F.E.S. - STA. 45+27.00, 44' RT
 INV. 814.72

DC-6
 PIPE CULVERT - 15" DIA.
 CLASS D, TYPE 1
 58' @ 0.30%
 EAST F.E.S. - STA. 47+67.50, 54' RT
 INV. 814.00
 WEST F.E.S. - STA. 47+05.50, 54' RT
 INV. 814.18

DC-7
 PIPE CULVERT - 15" DIA.
 CLASS D, TYPE 1
 58' @ 0.30%
 EAST F.E.S. - STA. 46+66.00, 52' LT
 INV. 814.31
 WEST F.E.S. - STA. 46+04.00, 52' LT
 INV. 814.49



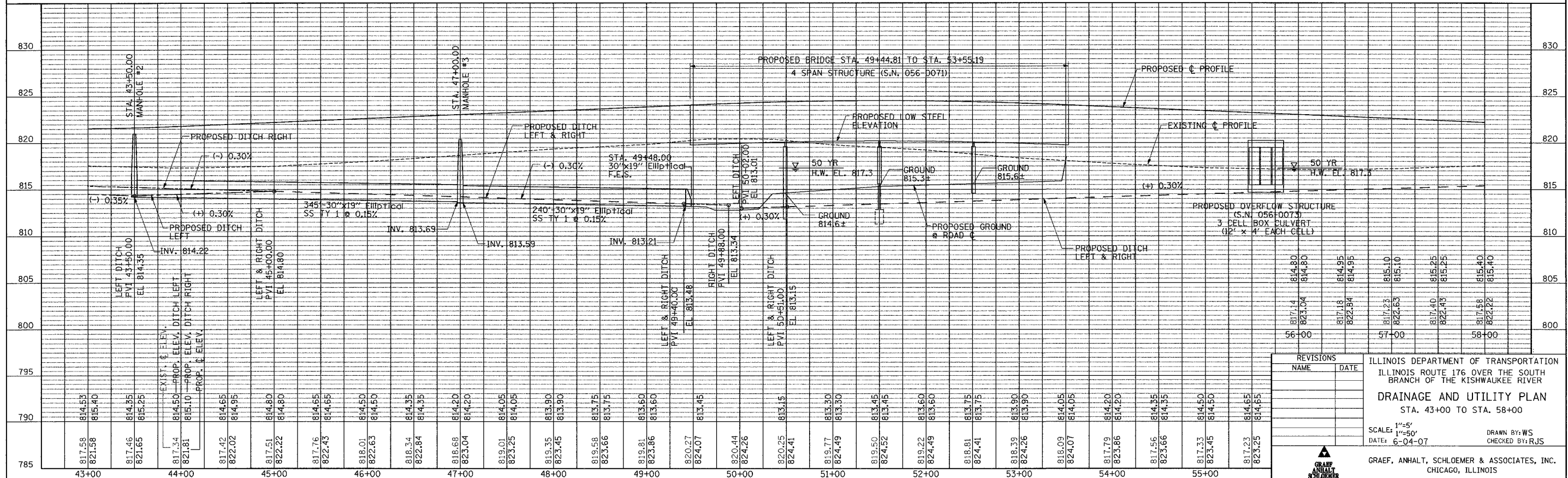
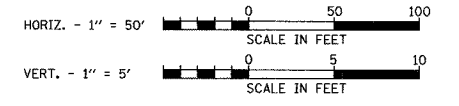
LEGEND:

- PROPOSED STRUCTURE
- PROPOSED STORM PIPE
- DC-1** CULVERT
- REM** UTILITY ITEM TO BE REMOVED
- DITCH FLOWLINE

NOTES:

FOR DRIVEWAY CULVERTS
 POLYVINYL CHLORIDE (PVC)
 AND POLYETHYLENE (PE)
 PIPES WILL NOT BE PERMITTED.

- 1** 30"x19" CONCRETE ELLIPTICAL F.E.S STA. 43+50.00, 43' LT INV.: 814.35
- 2** MANHOLE TY A, 6' DIA. TYPE 1 FR & CL STA. 43+50.00, 29' LT RIM: 821.00 INV.: 814.32 N INV.: 814.22 E
- 3** MANHOLE TY A, 5' DIA. TYPE 1 FR & CL STA. 47+00.00, 29' LT RIM: 820.35 INV.: 813.59 W INV.: 813.59 E
- 1** STORM SEWER, CLASS A, TY 1 30"x19" RC ELLIPTICAL PIPE 12' @ 0.15%
- 2** STORM SEWER, CLASS A, TY 1 30"x19" RC ELLIPTICAL PIPE 345' @ 0.15%
- 3** STORM SEWER, CLASS A, TY 1 30"x19" RC ELLIPTICAL PIPE 240' @ 0.15%
- 4** 30"x19" CONCRETE ELLIPTICAL F.E.S STA. 49+50.00, 29' LT INV.: 813.21



REVISIONS	NAME	DATE

ILLINOIS DEPARTMENT OF TRANSPORTATION
 ILLINOIS ROUTE 176 OVER THE SOUTH BRANCH OF THE KISHWAUKEE RIVER
DRAINAGE AND UTILITY PLAN
 STA. 43+00 TO STA. 58+00
 SCALE: 1"=5'
 DATE: 6-04-07
 DRAWN BY: WS
 CHECKED BY: RJS
 GRAEF, ANHALT, SCHLOEMER & ASSOCIATES, INC.
 CHICAGO, ILLINOIS

PLAN and PROFILE