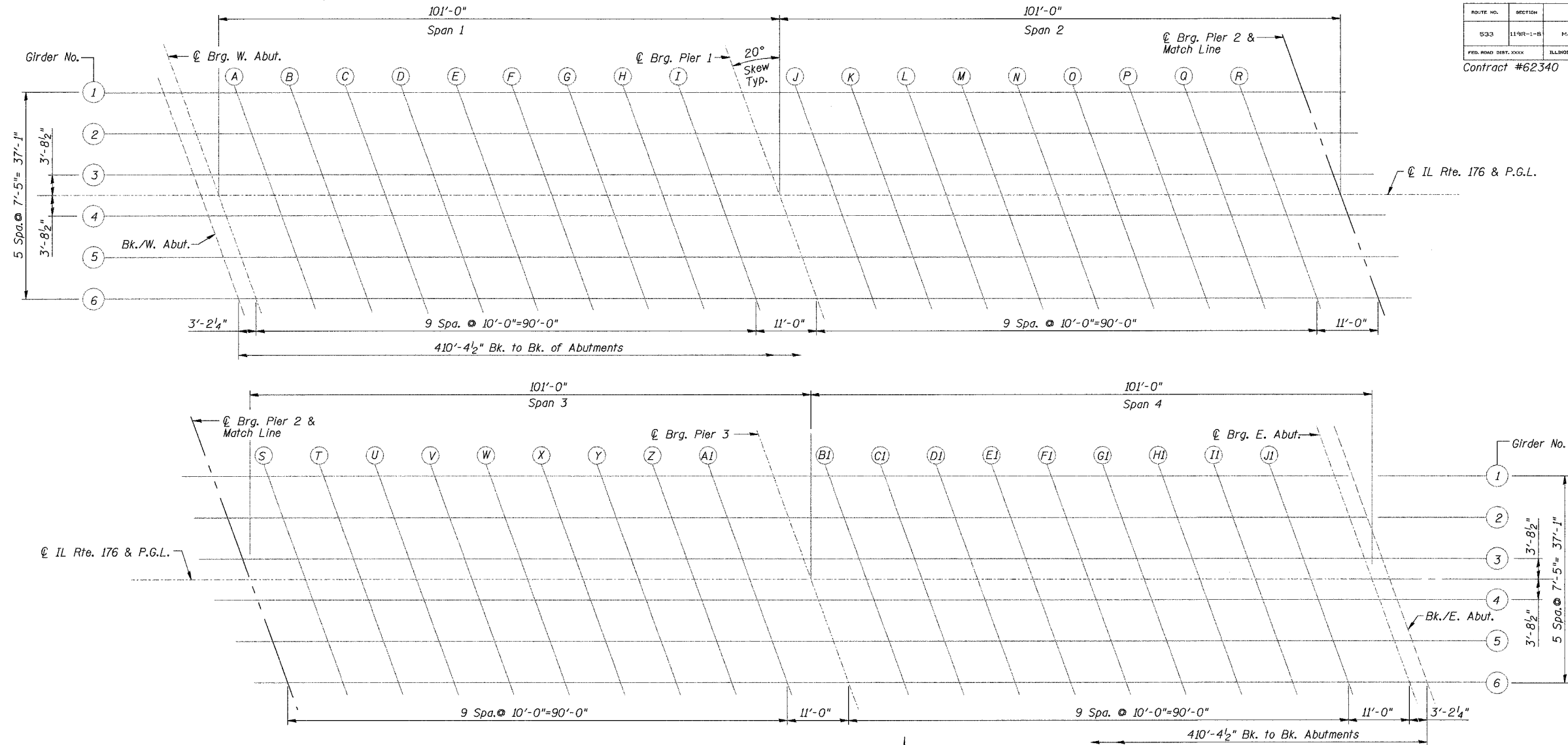
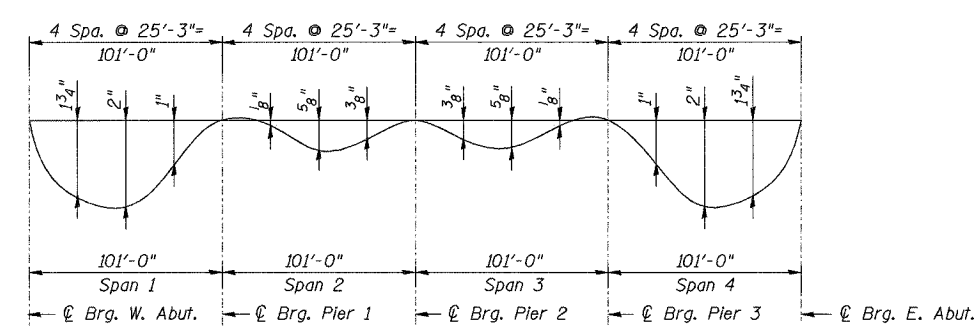


ROUTE NO.	SECTION	COUNTY	SHEET NO.	SHEET	SHEET NO. 3 OF 27 SHEETS
533	119R-1-B	McHenry	77	25	
FED. ROAD DIST. XXXX		ILLINOIS	FED. AID PROJECT		

Contract #62340



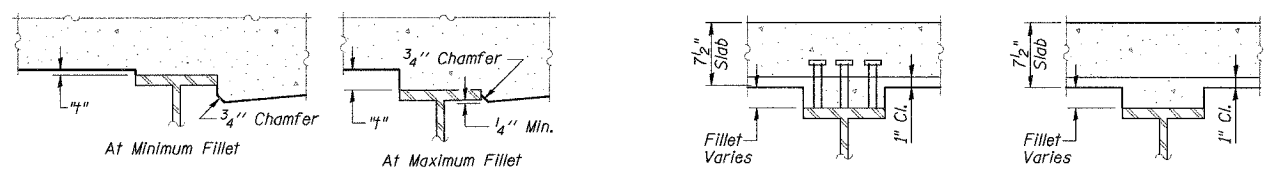
PLAN



**DEAD LOAD DEFLECTION DIAGRAM**

(Includes weight of concrete deck and all superimposed dead loads except future wearing surface.)

NOTE:  
The above deflections are not for use in the field if the engineer is working from the Theoretical Grade Elevations Adjusted for Dead Load Deflection as shown on Sheets 4 and 5 of 27.



**FILLET HEIGHTS**

To determine "h": After all structural steel has been erected, elevations of the top flanges of the beams shall be taken at intervals shown above. These elevations subtracted from the "Theoretical Grade Elevations Adjusted for Dead Load Deflection" shown on Sheets 4 and 5 of 27, minus slab thickness, equals the fillet heights "h" above top flange of beams.

DESIGNED	S.S.T.
CHECKED	S.D.H.
DRAWN	E.B.
CHECKED	S.S.T.

TOP OF DECK SLAB ELEVATIONS  
(1 OF 3)  
IL Route 176 over  
South Branch of the Kishwaukee River  
F.A.P. RTE 533, SECTION 119R-1-B  
McHENRY COUNTY  
STATION 51+50.00  
DATE: 08-17-07 S.N. 056-0071  
GRAEF, ANHALT, SCHLOEMER & ASSOCIATES INC  
CHICAGO ILLINOIS

N:\Jobs\2006\Plot\00176-Screen.dgn  
8/17/2007  
11:54:41 AM

McHENRY COUNTY ENGINEERING DEPARTMENT