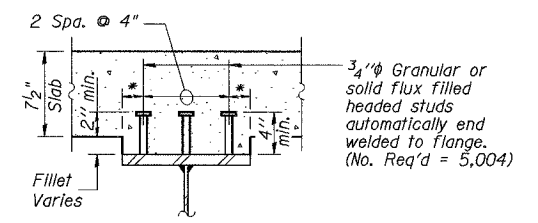
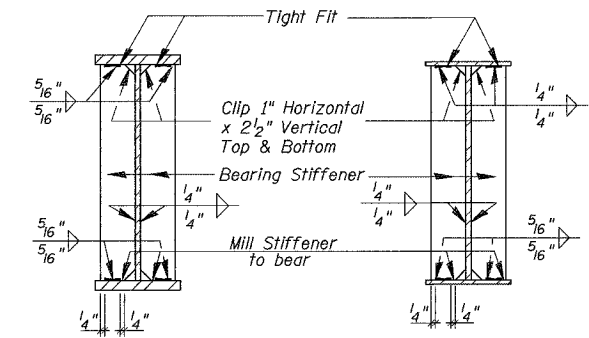


A = 5 Spa. @ 4" = 1'-8"
 B = 11 Spa. @ 10 1/2" = 9'-7 1/2"
 C = 3'-6" (See Field Splice #2 and #3 Detail on Sheet 10 of 27)

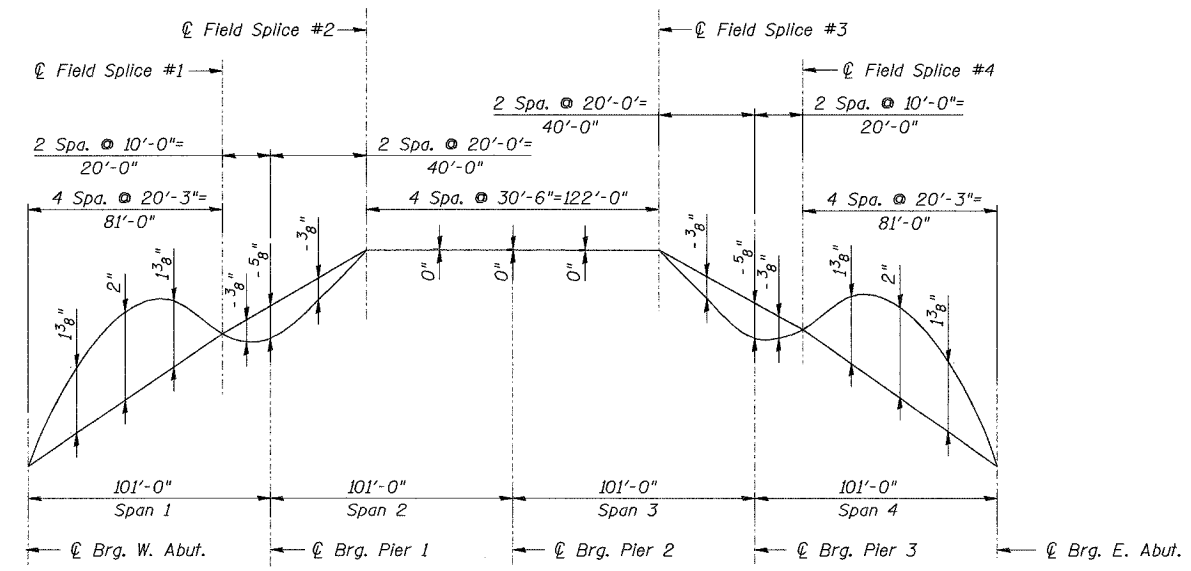
GIRDER ELEVATION

TOP OF GIRDER WEB ELEVATIONS
 (For Fabrication Use Only)

Girder No.	℄ Brg. W. Abut.	Splice #1	℄ Brg. Pier 1	Splice #2	℄ Brg. Pier 2	Splice #3	℄ Brg. Pier 3	Splice #4	℄ Brg. E. Abut.
1	822.971	823.225	823.216	823.342	823.355	823.361	823.247	823.262	823.026
2	823.126	823.376	823.366	823.490	823.499	823.501	823.385	823.399	823.159
3	823.248	823.495	823.484	823.605	823.610	823.609	823.490	823.503	823.260
4	823.260	823.503	823.490	823.609	823.610	823.605	823.484	823.495	823.248
5	823.159	823.399	823.385	823.501	823.499	823.490	823.366	823.376	823.126
6	823.026	823.262	823.247	823.361	823.355	823.342	823.216	823.225	822.971



SECTION A-A
 * = 2" for 12" wide flange
 * = 3" for 14" wide flange



CAMBER DIAGRAM
 Camber includes correction for vertical curve.
 Upward camber is positive.

- Notes:
1. Work this Sheet with Sheets 8 and 10 of 27.
 2. Load carrying components designated "NTR" shall conform to the Supplemental Requirements for Notch Toughness, Zone 2.
 3. All Structural Steel on this Sheet shall be AASHTO M270 Grade 50 Steel.
 4. Longitudinal dimensions for Girder are shown horizontal, exclusive of rise.
 5. All cross frames or diaphragms shall be installed as steel is erected and secured with erection pins and bolts except as otherwise noted. Individual cross frames or diaphragms at supports may be temporarily disconnected to install bearing anchors.

BILL OF MATERIAL

Item	Unit	Quantity
Furnishing and Erecting Structural Steel	L. Sum	1
Stud Shear Connectors	Each	5,004

GIRDER ELEVATION
 IL Route 176 over
 South Branch of the Kishwaukee River
 F.A.P. RTE 533, SECTION 119R-1-B
 McHENRY COUNTY
 STATION 51+50.00
 S.N. 056-0071
 DATE: 08-17-07
 GRAEF, ANHALT, SCHLOEMER & ASSOCIATES INC
 CHICAGO ILLINOIS