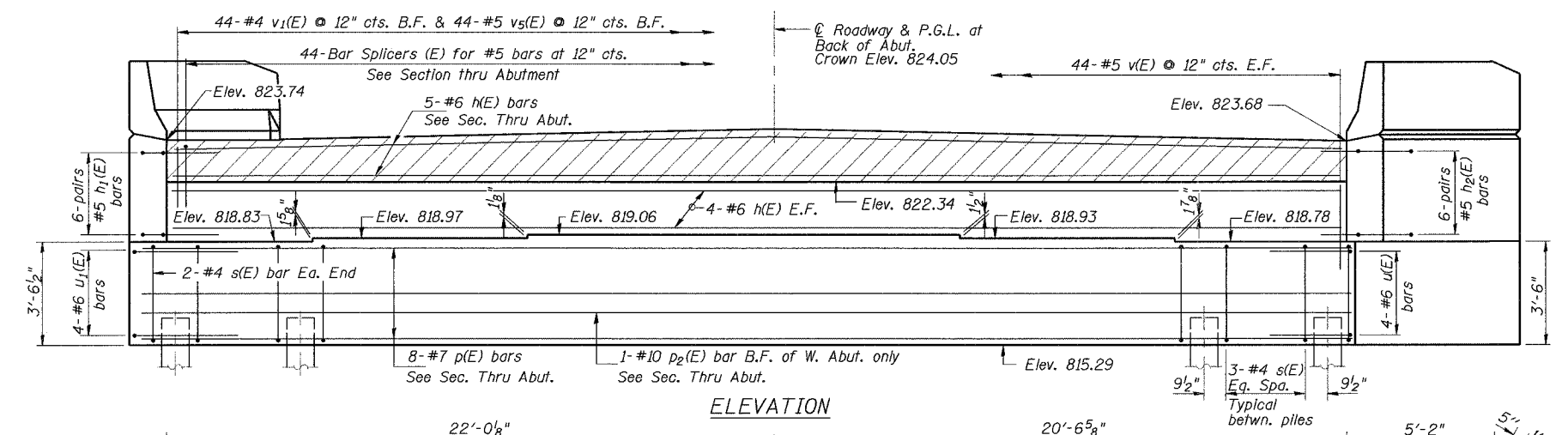
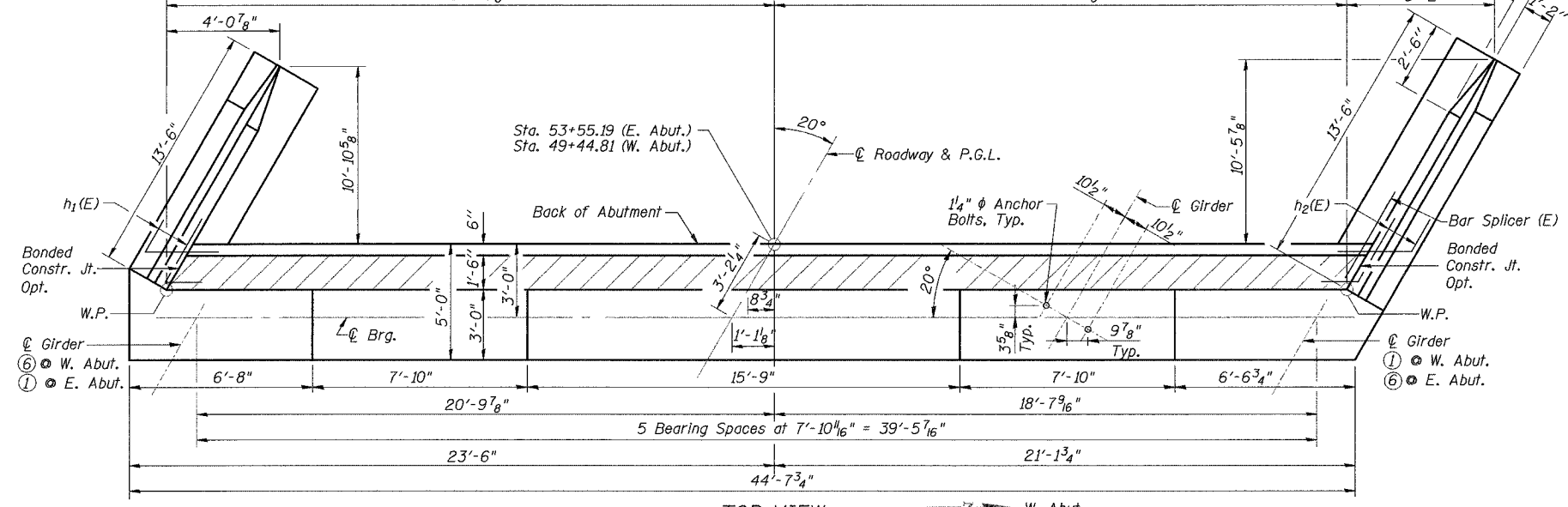


ROUTE NO.	SECTION	COUNTY	TOTAL SHEETS	SHEET NO.	SHEET NO. 13 OF 27 SHEETS
533	119R-1-B	McHenry	77	35	
FED. ROAD DIST. NO.		ILLINOIS	FED. AID PROJECT		

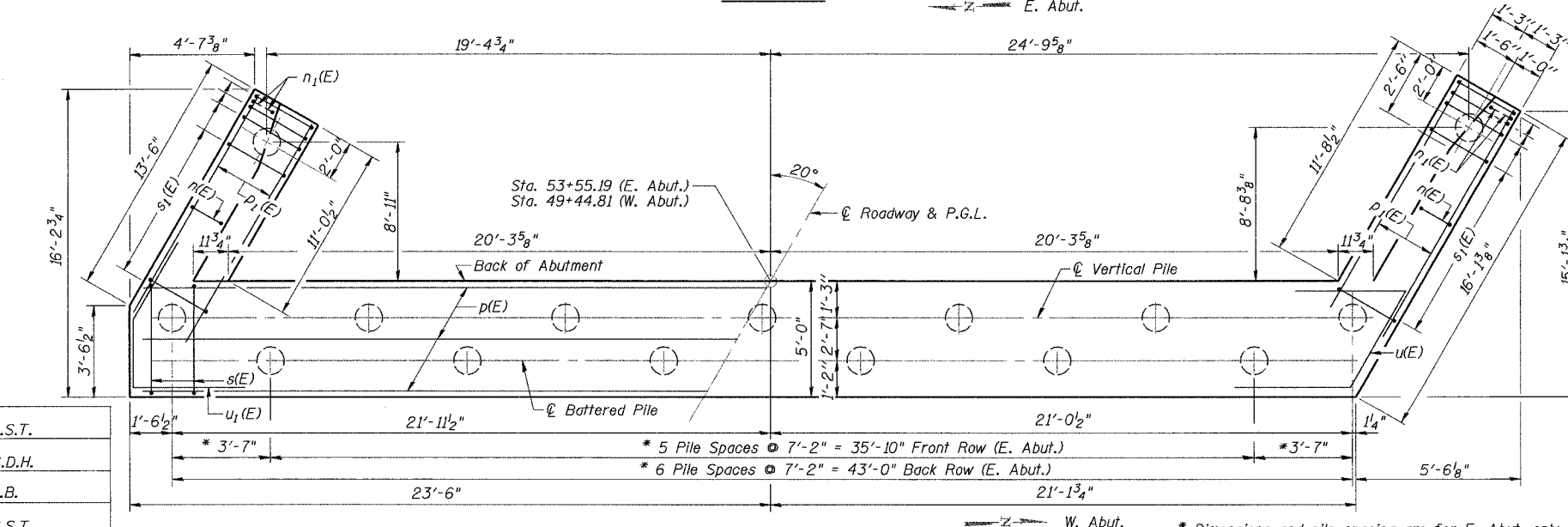
Contract #62340



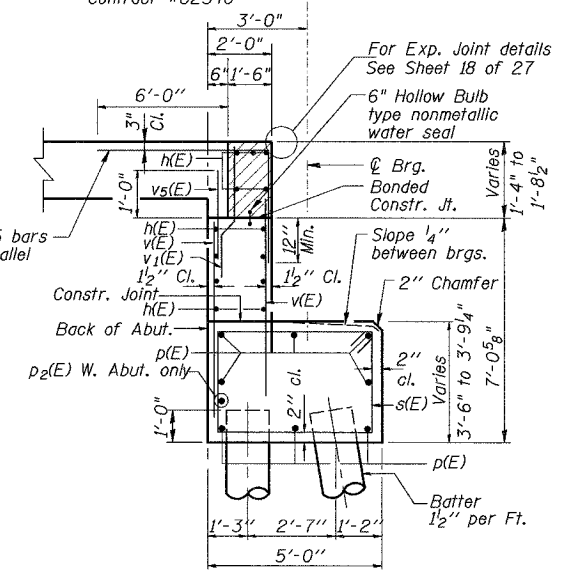
ELEVATION



TOP VIEW



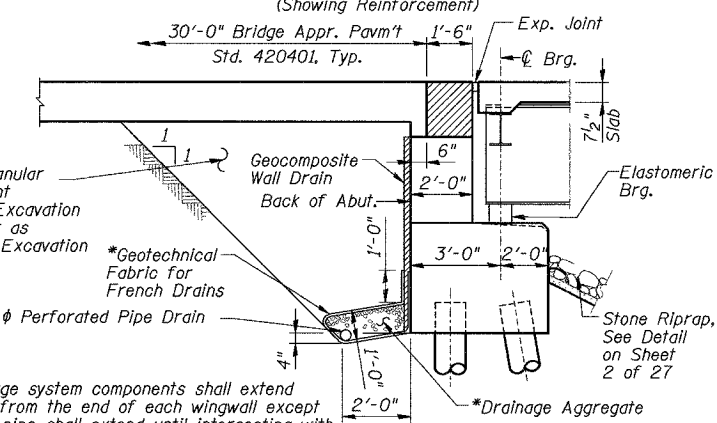
PLAN-PILE CAP



SECTION THRU ABUTMENT

(Showing Reinforcement)

Bar splicer (E) for #5 bars (12\"/>



SECTION THRU ABUTMENT

(Showing Details)

Note: All drainage system components shall extend to 2'-0\"/>

- Notes:
- Hatched area to be poured after superstructure forms have been removed. Quantity of concrete included with Concrete Superstructure. For additional details of reinforcement bars at hatched area, see Section A-A on Sheet 7 of 27.
 - Space reinforcement in cap to miss anchor bolts.
 - Pour steps monolithically with cap.
 - For anchor rods at W Abut., See Partial Plan & Section A-A on Sheet 12 of 27.
 - Concrete Sealer shall be applied to the top of seats, front face of backwall, and front face of abutment stem.

PILE DATA

Pile Type and Size: Metal Shell 14\"/>

WEST & EAST ABUTMENTS
 IL Route 176 over
 South Branch of the Kishwaukee River
 F.A.P. RTE 533, SECTION 119R-1-B
 McHENRY COUNTY
 STATION 51+50.00
 S.N. 056-0071
 DATE: 08-17-07
 GRAEF, ANHALT, SCHLOEMER & ASSOCIATES INC
 CHICAGO ILLINOIS

DESIGNED	S.S.T.
CHECKED	S.D.H.
DRAWN	E.B.
CHECKED	S.S.T.

N:\Jobs\2006\pilot\00176-Abut.dgn
 8/17/2007 10:00 AM
 lhc4402 AM