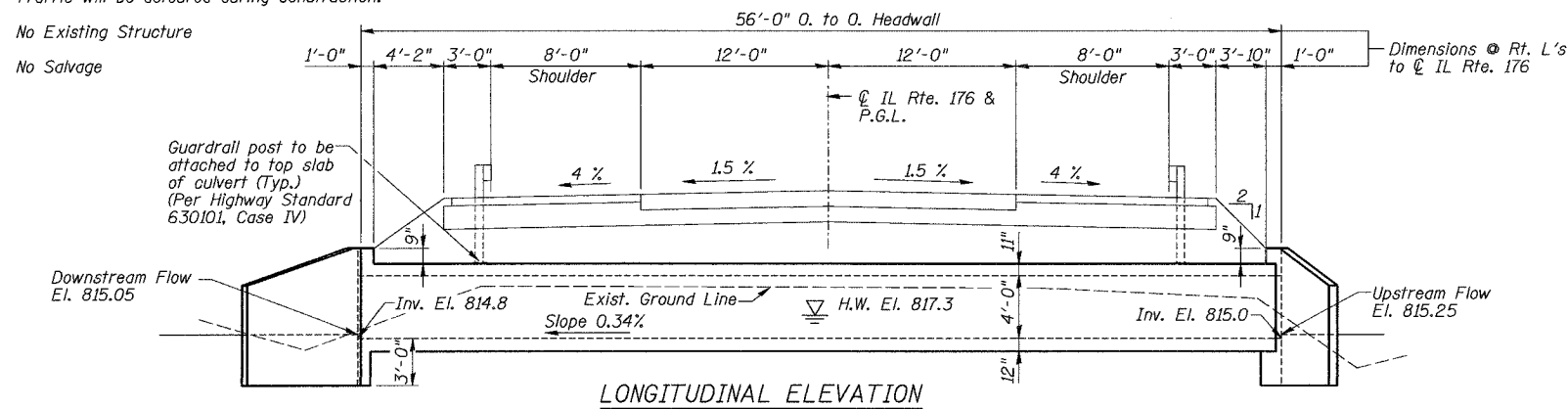


B.M. - PK Nail at Centerline of Roadway at Sta. 72+18.32, Elev. 828.07

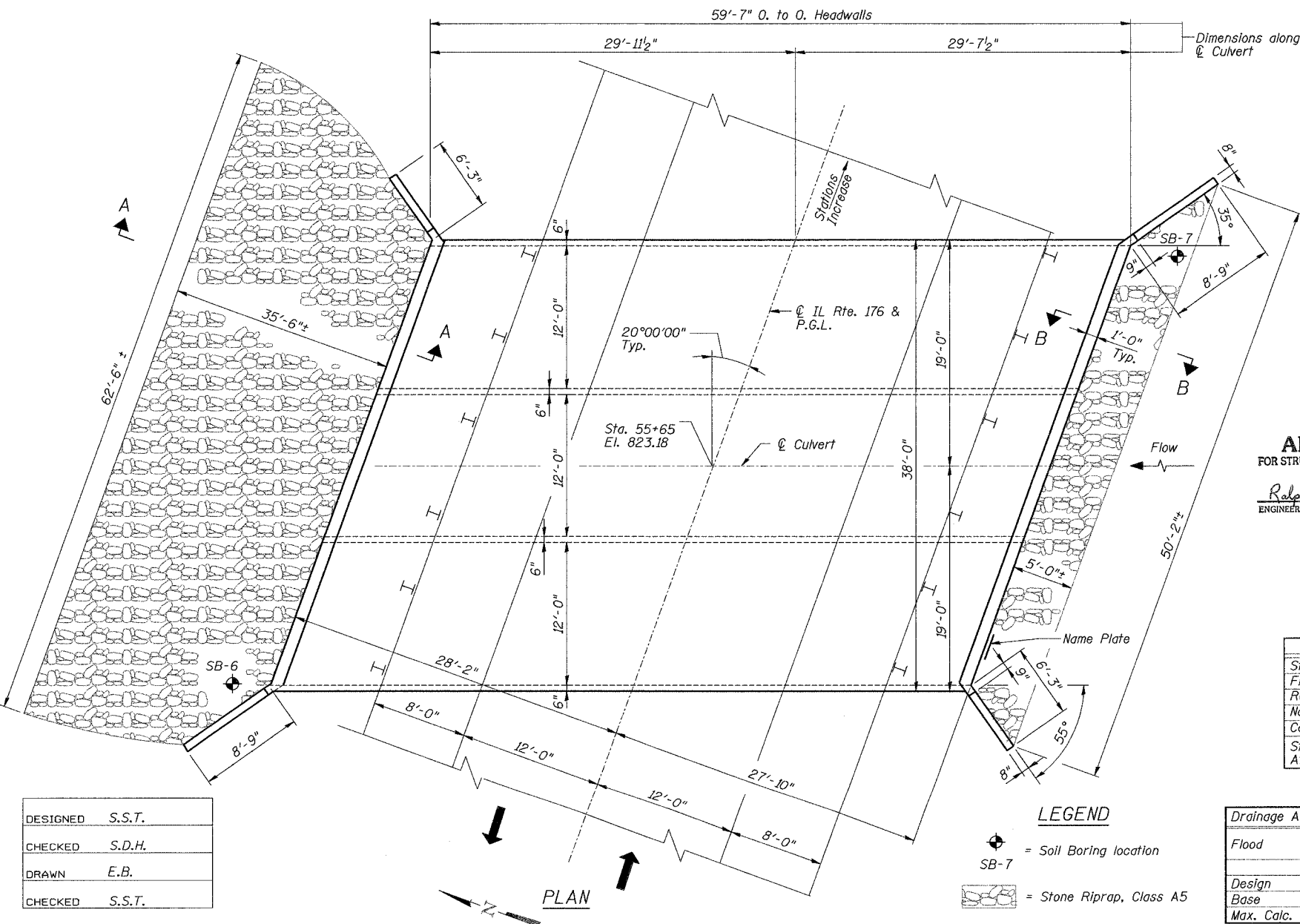
Traffic will be detoured during construction.

No Existing Structure

No Salvage



LONGITUDINAL ELEVATION



PLAN

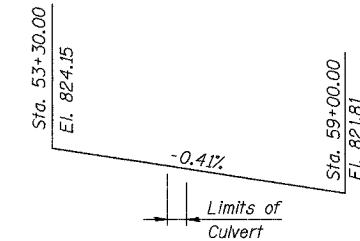
LEGEND

- SB-7 = Soil Boring location
- = Stone Riprap, Class A5

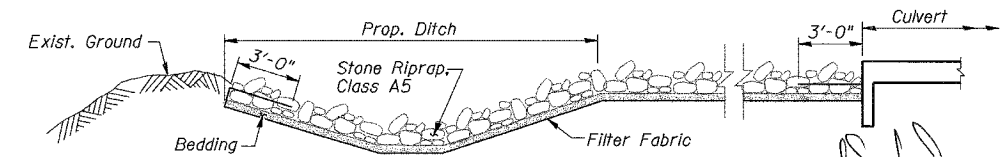
DESIGNED	S.S.T.
CHECKED	S.D.H.
DRAWN	E.B.
CHECKED	S.S.T.

STATION 55+65
 BUILT 200_ BY
 STATE OF ILLINOIS
 F.A.P. RT. 533 SEC. 119R-1-B
 LOADING HS20
 STR. NO. 056-0073

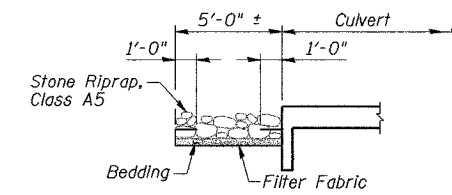
NAME PLATE
 See Std. 515001



PROFILE GRADE LINE
 along IL Rte. 176

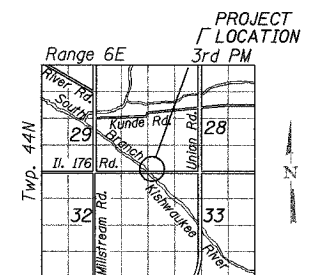


SECTION A-A
 (Stone Riprap at downstream side of culvert)



SECTION B-B
 (Stone Riprap at upstream side of culvert)

APPROVED
 FOR STRUCTURAL ADEQUACY ONLY
Ralph E. Anderson (SE)
 ENGINEER OF BRIDGES AND STRUCTURES



LOCATION SKETCH

TOTAL BILL OF MATERIAL

ITEM	UNIT	QUANTITY
Stone Riprap, Class A5	Sq. Yd.	275
Filter Fabric	Sq. Yd.	275
Reinforcement Bars	Pound	36,620
Name Plates	Each	1
Concrete Box Culverts	Cu. Yd.	190.3
Steel Plate Beam Guardrail, Attached to Structures	Foot	100

WATERWAY INFORMATION

Drainage Area = 72.7 mi² Low Grade Elev. 822.5 ft @ Sta. 55+00 - 56+00

Flood	Freq. Yr.	Q ft ³ /s	Opening Sq. Ft.		Nat. H.W.E.	Head - Ft.		Headwater El.	
			Exist.	Prop.		Exist.	Prop.	Exist.	Prop.
Design	10	60	43	65	816.7	0.3	817.0	817.0	817.0
Base	50	65	65	83	817.3	0.4	818.3	818.3	818.3
Max. Calc.	100	70	83	112	817.8	0.5	819.2	819.2	819.2
	500	81	112		818.6	0.6			

GENERAL PLAN
 IL Route 176 over South Branch of the Kishwaukee River (Overflow Site)
 F.A.P. RTE 533, SECTION 119R-1-B
 McHENRY COUNTY
 STATION 55+65.00
 S.N. 056-0073
 DATE: 08-17-07
 GRAEF, ANHALT, SCHLOEMER & ASSOCIATES INC
 CHICAGO ILLINOIS

ROUTE NO.	SECTION	COUNTY	POST MILES	SHEET NO.	TOTAL SHEETS
533	119R-1-B	McHenry	77	50	5 SHEETS

Contract #62340
GENERAL NOTES

- A distance half the length of the wingwall but not less than 6 feet of the barrel shall be poured monolithically with the wingwalls.
- Reinforcement bars shall conform to the requirements of ASTM A 706 Gr 60 (IL Modified). See Special Provisions.
- Precast alternate is not allowed.
- For backfilling and embankment, see Standard Specifications. Backfill shall be CA-5 or CA-7. Cost included in payment for Concrete Box Culverts.
- For guardrail post spacing, see Roadway Plans.
- Layout of slope protection system may be varied in the field to suit ground conditions as directed by the Engineer.

DESIGN SPECIFICATIONS

1996 AASHTO with 1997, 1998, 1999, 2000 and 2002 Interims

DESIGN STRESSES

FIELD UNITS
 f'c = 3,500 psi
 fy = 60,000 psi (Reinforcement)

LOADING HS20-44

Allow 50 #/ sq. ft. for Future Wearing Surface