

STATE OF ILLINOIS
DEPARTMENT OF TRANSPORTATION

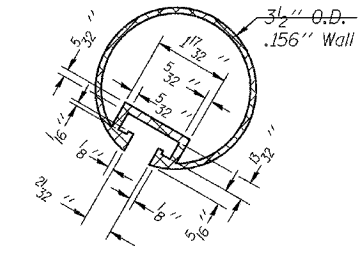
ROUTE NO.	SECTION	COUNTY	TOTAL SHEETS	SHEET NO.
		LaSalle	17	13
FED. ROAD DIST. NO. 7	ILLINOIS	FED. AID PROJECT-		

SHEET NO. 5
7 SHEETS

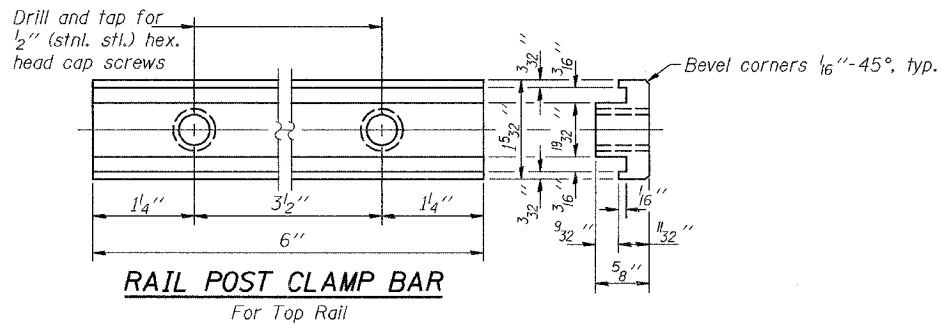
Contract Number: 62768

Notes:

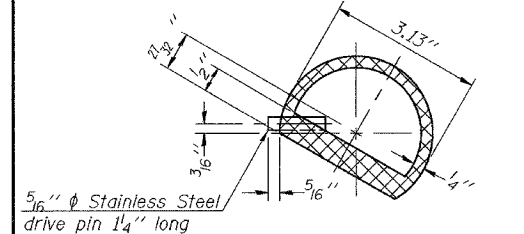
All Posts shall be normal to parapet.
All Aluminum Alloy Extruded Rail shall be supplied in modular lengths of 30 feet, except at the end of bridge or over open joints in bridge deck where the rail shall be attached to a minimum of 2 posts. If the rail is on a horizontal curve of 2300 foot radius or less, the modular lengths may be reduced but shall be attached to a minimum of 2 posts.
All joints in rail shall be spliced per detail.
Provide 1-1/8" and 2-1/16" Aluminum Shims for 25% of the Posts.
Rail elements shall be parallel to Grade-high spots will be ground and low spots shimmed.
Railing shall be according to Section 509 of the Standard Specifications, except as noted, and will be paid for at the contract unit price per foot for ALUMINUM RAILING, TYPE L.
Aluminum alloy rail shall conform to ASTM B 221 alloy 6061-T6 or 6351-T5 with min. yield 35 ksi, min. tensile 38 ksi, and elongation of 10% in 2 inches.



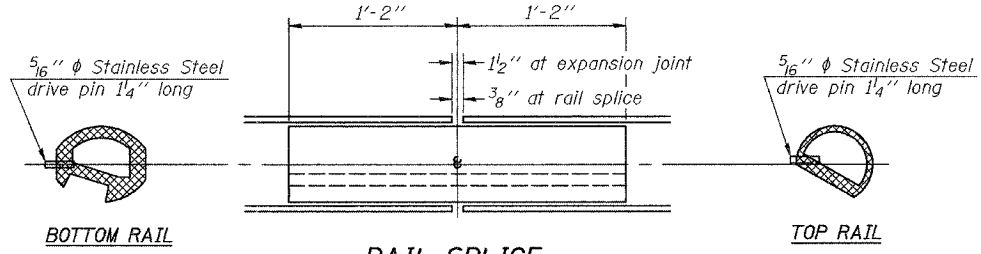
SECTION THRU TOP RAIL



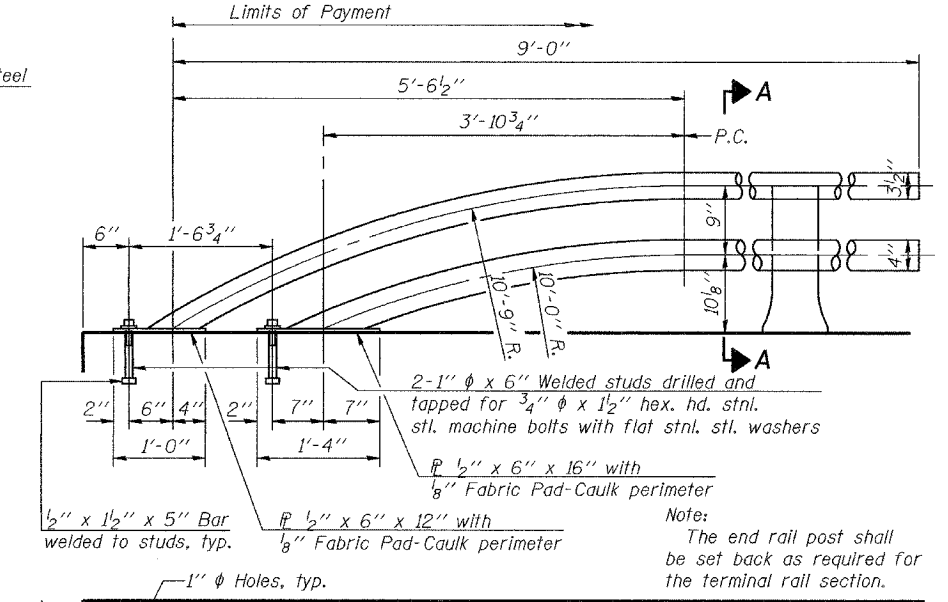
RAIL POST CLAMP BAR
For Top Rail



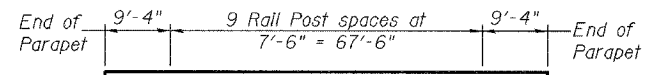
SECTION THRU SPLICE
For Top Rail



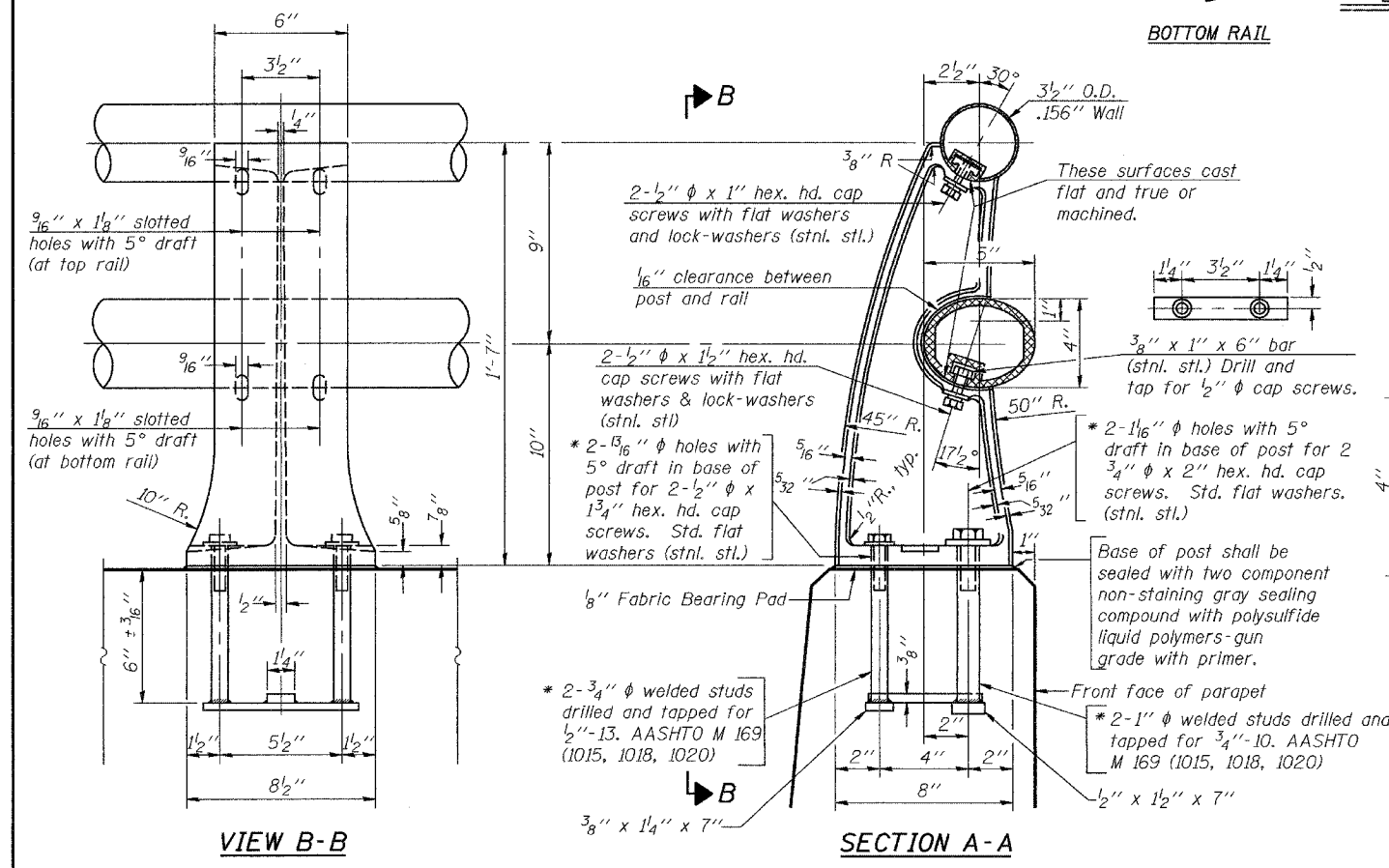
BOTTOM RAIL
RAIL SPLICE
TOP RAIL



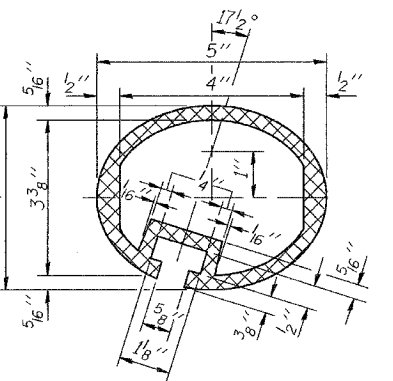
RAIL TERMINAL SECTION



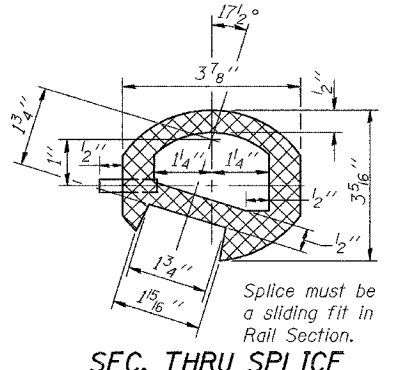
RAIL POST SPACING



RAIL POST DETAILS



SEC. THRU ELLIPTICAL
RAIL SECTION



SEC. THRU SPLICE

*In lieu of the cast-in-place anchor device shown, the Contractor has the option of drilling and epoxy grouting stainless steel anchor rods of the same diameter and grade as the specified cap screws. Embedment shall be according to the manufacturer's specifications.

BILL OF MATERIAL

Item	Unit	Quantity
Aluminum Railing, Type L	Foot	170

PARAPET RAILING DETAILS
F.A.U. RT. 1253
HALF DAY RD / EAST
BRANCH OF SKOKIE DITCH
LAKE COUNTY
SN 049-0011

DESIGNED	A.T.H.	September 21, 2006
CHECKED	S.J.B.	EXAMINED <i>John A. Morris</i> ENGINEER OF STRUCTURAL SERVICES
DRAWN	Drew Christopher	PASSED <i>Ralph E. Anderson</i> ENGINEER OF BRIDGES AND STRUCTURES
CHECKED	A.T.H. S.J.B.	
R-20	10-22-04	