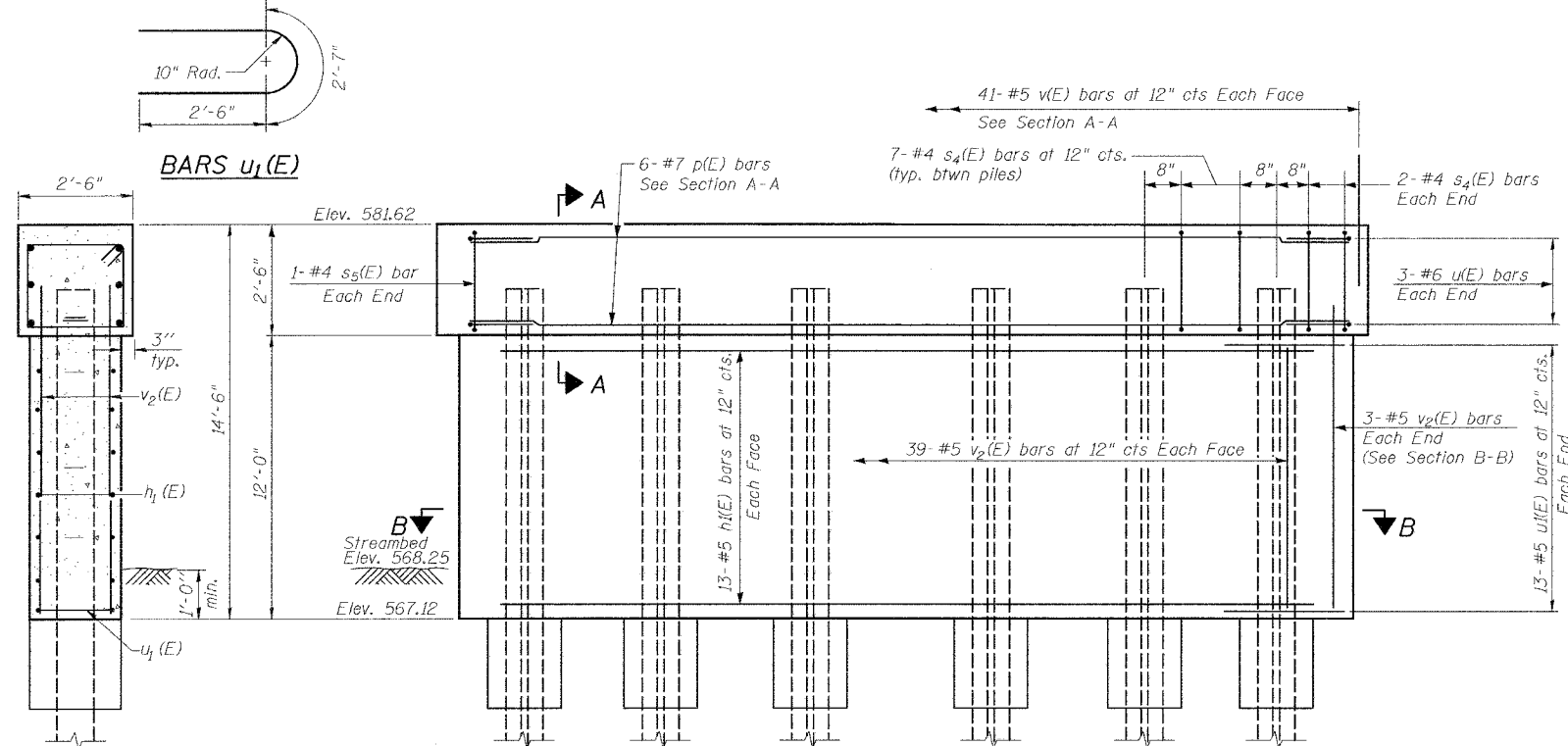
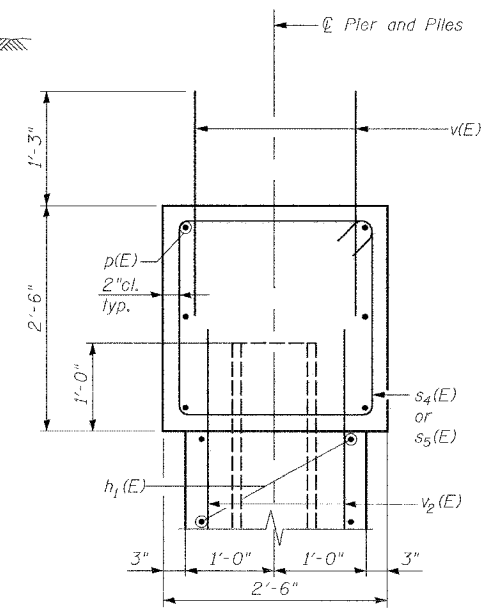
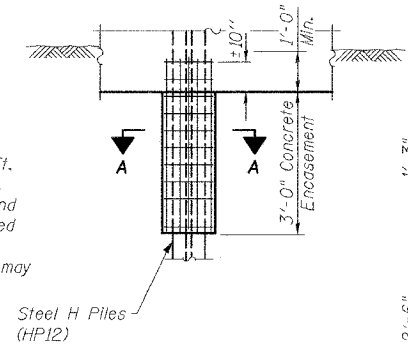
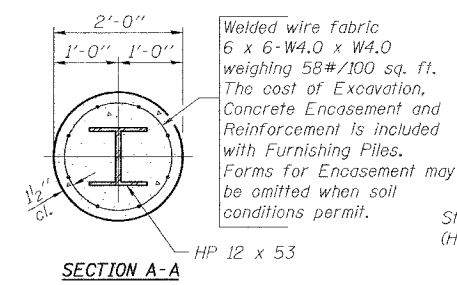
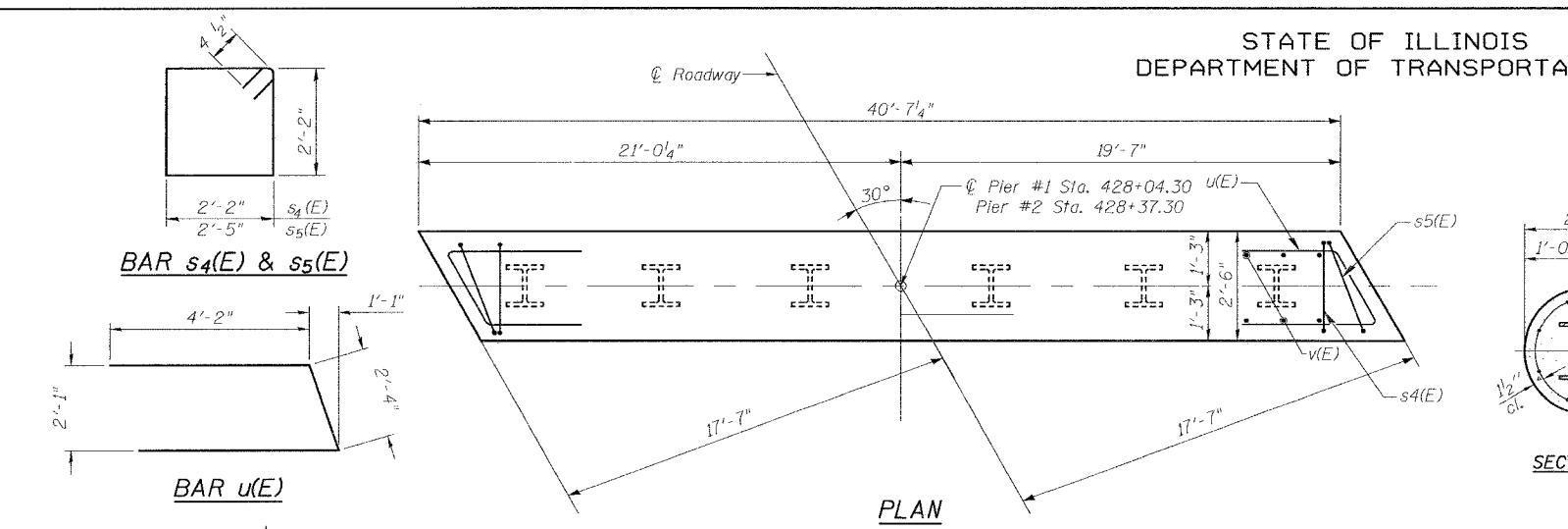


STATE OF ILLINOIS
DEPARTMENT OF TRANSPORTATION

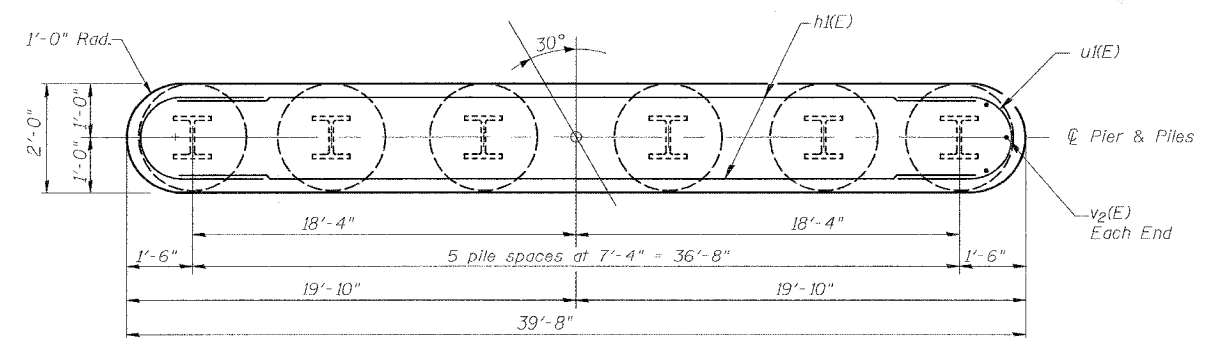
SHEET #8 OF 11 SHEETS	ROUTE NO. 203	SECTION 11BR-1	COUNTY WHITESIDE	SHEETS 43	SHEET 19
FAS 203			ILLINOIS FED. AID PROJECT-		

CONTRACT 64939



END VIEW

ELEVATION
(Pier #1 Looking East)
(Pier #2 Looking East)



SECTION B-B

DESIGNED	KCM
CHECKED	TMM
DRAWN	JLM
CHECKED	TMM

PIER 1
PILE DATA

Type: HP 12 x 53 w/ Metal Shoes
Design Capacity: 68 Tons
Required Bearing: Driven to Refusal
Est. Length: 69 ft.
No. Required: 5 + 1 Test Pile

PIER 2
PILE DATA

Type: HP 12 x 53 w/ Metal Shoes
Design Capacity: 68 Tons
Required Bearing: Driven to Refusal
Est. Length: 32 ft.
No. Required: 6

BILL OF MATERIAL FOR PIER 1

Bar	No.	Size	Length	Shape
h1(E)	26	#5	37'-8"	—
p(E)	6	#7	40'-3"	—
s4(E)	39	#4	9'-5"	□
s5(E)	2	#4	9'-11"	□
u(E)	6	#6	10'-8"	U
u1(E)	26	#5	7'-7"	U
v(E)	82	#5	2'-9"	—
v2(E)	84	#5	13'-4"	—
Structure Excavation		Cu. Yd.	9.5	
Concrete Structures		Cu. Yd.	44.3	
Reinforcement Bars, Epoxy Coated		Pound	3480	
Furnishing Steel Piles HP 12x53		Foot	345	
Driving Steel Piles		Foot	345	
Test Pile Steel HP 12x53		Each	1	
Metal Shoes		Each	5	
Underwater Structure Excavation Protection		Each	1	

Reinforcement Bars designated (E) shall be epoxy coated

SECTION A-A
(At Right Angles)

BILL OF MATERIAL FOR PIER 2

Bar	No.	Size	Length	Shape
h1(E)	26	#5	37'-8"	—
p(E)	6	#7	40'-3"	—
s4(E)	39	#4	9'-5"	□
s5(E)	2	#4	9'-11"	□
u(E)	6	#6	10'-8"	U
u1(E)	26	#5	7'-7"	U
v(E)	82	#5	2'-9"	—
v2(E)	84	#5	13'-4"	—
Structure Excavation		Cu. Yd.	9.5	
Concrete Structures		Cu. Yd.	44.3	
Reinforcement Bars, Epoxy Coated		Pound	3480	
Furnishing Steel Piles HP 12x53		Foot	192	
Driving Steel Piles		Foot	192	
Metal Shoes		Each	6	
Underwater Structure Excavation Protection		Each	1	

Reinforcement Bars designated (E) shall be epoxy coated

PILE BENT PIER
FAS ROUTE 203 (MOLINE ROAD)
OVER MEREDOSIA DITCH
SECTION 11BR-1
STA. 428+20.80
WHITESIDE COUNTY
SN 098-0111