

STATE OF ILLINOIS
DEPARTMENT OF TRANSPORTATION

ROUTE NO.	SECTION	COUNTY	SHEETS	SHEET NO.	SHEET NO. 129
F.A.I. 39	50-4B	LASALLE	151		313 SHEETS
FED. ROAD DIST. NO. 7	ILLINOIS	FED. AID PROJECT			

Contract # 66586

BILL OF MATERIAL
(Southbound Deck)

Bar	No.	Size	Length	Shape
a(E)	2109	#5	42'-6"	—
a1(E)	1236	#6	4'-6"	—
a2(E)	24	#5	2'-0"	—
a3(E)	6	#6	5'-0"	—
a4(E)	8	#6	2'-6"	—
a5(E)	15	#6	8'-0"	—
b3(E)	12	#5	2'-3"	—
b120(E)	1012	#5	30'-3"	—
b121(E)	874	#5	29'-0"	—
b122(E)	258	#6	32'-9"	—
b123(E)	129	#6	28'-9"	—
d(E)	672	#4	3'-4"	┌
d1(E)	1344	#5	2'-5"	┌
d2(E)	672	#4	3'-5"	┌
d8(E)	15	#5	5'-5"	┌
d99(E)	590	#5	3'-6"	┌
x(E)	80	#5	4'-1"	┌
Item	Unit	Total		
Reinforcement Bars, Epoxy Coated	Pound	187,800		
Concrete Superstructure	Cu. Yd.	738.5		
Bridge Deck Grooving	Sq. Yd.	2,606		
Protective Coat	Sq. Yd.	2,743		

BILL OF MATERIAL
(Southbound Parapets)

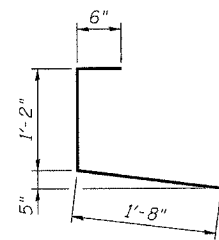
Bar	No.	Size	Length	Shape
d3(E)	1344	#4	3'-0"	┌
d4(E)	1353	#5	3'-0"	┌
d6(E)	15	#6	8'-11"	┌
e10(E)	9	#4	2'-3"	—
e11(E)	3	#8	2'-3"	—
e12(E)	3	#5	2'-3"	—
e14(E)	20	#5	6'-0"	—
e120(E)	144	#4	19'-3"	—
e121(E)	32	#8	32'-9"	—
e122(E)	32	#5	31'-0"	—
e123(E)	96	#4	13'-9"	—
e124(E)	16	#8	27'-9"	—
e125(E)	16	#5	27'-9"	—
e126(E)	144	#4	19'-0"	—
e127(E)	32	#8	32'-3"	—
e128(E)	32	#5	30'-6"	—
e129(E)	24	#4	21'-9"	—
e130(E)	8	#8	21'-9"	—
e131(E)	8	#5	21'-9"	—
Item	Unit	Total		
Reinforcement Bars, Epoxy Coated	Pound	22,050		
Concrete Superstructure	Cu. Yd.	148.1		
Protective Coat	Sq. Yd.	537		

BILL OF MATERIAL
(Northbound Deck)

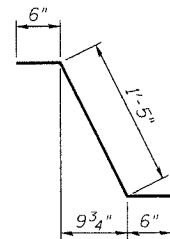
Bar	No.	Size	Length	Shape
a(E)	2109	#5	42'-6"	—
a1(E)	1236	#6	4'-6"	—
a2(E)	24	#5	2'-0"	—
a3(E)	6	#6	5'-0"	—
a4(E)	8	#6	2'-6"	—
b3(E)	12	#5	2'-3"	—
b120(E)	1012	#5	30'-3"	—
b121(E)	874	#5	29'-0"	—
b122(E)	258	#6	32'-9"	—
b123(E)	129	#6	28'-9"	—
d(E)	672	#4	3'-4"	┌
d1(E)	1341	#5	2'-5"	┌
d2(E)	669	#4	3'-5"	┌
d99(E)	590	#5	3'-6"	┌
x(E)	80	#5	4'-1"	┌
Item	Unit	Total		
Reinforcement Bars, Epoxy Coated	Pound	187,520		
Concrete Superstructure	Cu. Yd.	737.8		
Bridge Deck Grooving	Sq. Yd.	2,606		
Protective Coat	Sq. Yd.	2,743		

BILL OF MATERIAL
(Northbound Parapets)

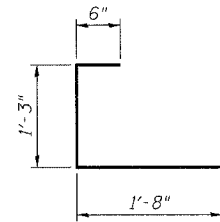
Bar	No.	Size	Length	Shape
d3(E)	1341	#4	3'-0"	┌
d4(E)	1341	#5	3'-0"	┌
e14(E)	8	#5	6'-0"	—
e120(E)	144	#4	19'-3"	—
e121(E)	32	#8	32'-9"	—
e122(E)	32	#5	31'-0"	—
e123(E)	96	#4	13'-9"	—
e124(E)	16	#8	27'-9"	—
e125(E)	16	#5	27'-9"	—
e126(E)	144	#4	19'-0"	—
e127(E)	32	#8	32'-3"	—
e128(E)	32	#5	30'-6"	—
e129(E)	24	#4	21'-9"	—
e130(E)	8	#8	21'-9"	—
e131(E)	8	#5	21'-9"	—
Item	Unit	Total		
Reinforcement Bars, Epoxy Coated	Pound	21,750		
Concrete Superstructure	Cu. Yd.	146.0		
Protective Coat	Sq. Yd.	537		



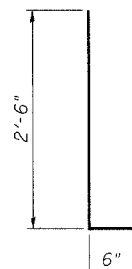
BAR d(E)



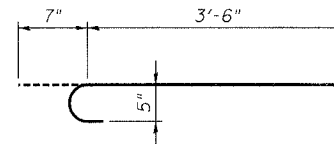
BAR d1(E)



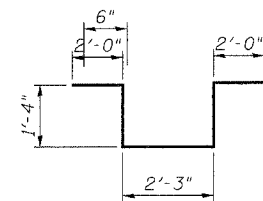
BAR d2(E)



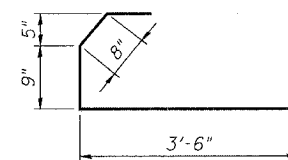
BARS d3(E) & d4(E)



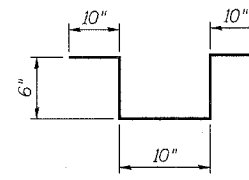
BAR x(E)



BAR d6(E)



BAR d8(E)



BAR d99(E)

NOTES:

1. Reinforcement bars designated (E) shall be epoxy coated.
2. All bar dimensions are out to out.

BILL OF MATERIAL - SPANS 18 THRU 21
ABRAHAM LINCOLN MEMORIAL BRIDGE OVER
THE ILLINOIS RIVER (PUBLIC WATERS)
F.A.I. ROUTE 39 SEC. (50-4B) BR
LASALLE COUNTY
STATION 863+16.00
STRUCTURE NO. 050-0191 (SB & NB)

benesch

alfred benesch & company
Engineers • Surveyors • Planners
205 North Michigan Avenue, Suite 2400
Chicago, Illinois 60601
312-565-0450
Job # 3856

DESIGNED	AJK
CHECKED	MRB
DRAWN	VH
CHECKED	MRB

x:\38500s\3856\structures\abe lincoln memorial\final\plans\AL_dk\bm1821.sht

3:04:41 PM

10/16/2006