

STATE OF ILLINOIS  
DEPARTMENT OF TRANSPORTATION

ROUTE NO. F.A.I. 39	SECTION 50-4B	COUNTY LASALLE	TOTAL SHEETS 155	SHEET NO. 133
FED. ROAD DIST. NO. 7		ILLINOIS	FED. AID PROJECT-	313 SHEETS

Contract # 66586

**BILL OF MATERIAL**  
(Southbound Deck)

Bar	No.	Size	Length	Shape
a(E)	2109	#5	42'-6"	—
a1(E)	1236	#6	4'-6"	—
a2(E)	24	#5	2'-0"	—
a3(E)	6	#6	5'-0"	—
a4(E)	8	#6	2'-6"	—
a5(E)	10	#6	8'-0"	—
b3(E)	8	#5	2'-3"	—
b120(E)	1012	#5	30'-3"	—
b121(E)	874	#5	29'-0"	—
b122(E)	258	#6	32'-9"	—
b123(E)	129	#6	28'-9"	—
d(E)	672	#4	3'-4"	┌
d1(E)	1344	#5	2'-5"	┌
d2(E)	672	#4	3'-5"	┌
d8(E)	10	#5	5'-5"	┌
d99(E)	590	#5	3'-6"	┌
x(E)	80	#5	4'-1"	┌
<b>Item</b>	<b>Unit</b>	<b>Total</b>		
Reinforcement Bars, Epoxy Coated	Pound	187,710		
Concrete Superstructure	Cu. Yd.	738.4		
Bridge Deck Grooving	Sq. Yd.	2,606		
Protective Coat	Sq. Yd.	2,743		

**BILL OF MATERIAL**  
(Southbound Parapets)

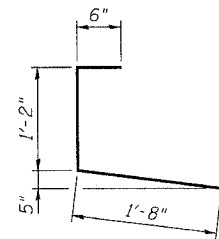
Bar	No.	Size	Length	Shape
d3(E)	1344	#4	3'-0"	┌
d4(E)	1350	#5	3'-0"	┌
d6(E)	10	#6	8'-11"	┌
e10(E)	6	#4	2'-3"	—
e11(E)	2	#8	2'-3"	—
e12(E)	2	#5	2'-3"	—
e14(E)	16	#5	6'-0"	—
e120(E)	144	#4	19'-3"	—
e121(E)	32	#8	32'-9"	—
e122(E)	32	#5	31'-0"	—
e123(E)	96	#4	13'-9"	—
e124(E)	16	#8	27'-9"	—
e125(E)	16	#5	27'-9"	—
e126(E)	144	#4	19'-0"	—
e127(E)	32	#8	32'-3"	—
e128(E)	32	#5	30'-6"	—
e129(E)	24	#4	21'-9"	—
e130(E)	8	#8	21'-9"	—
e131(E)	8	#5	21'-9"	—
<b>Item</b>	<b>Unit</b>	<b>Total</b>		
Reinforcement Bars, Epoxy Coated	Pound	21,990		
Concrete Superstructure	Cu. Yd.	147.7		
Protective Coat	Sq. Yd.	537		

**BILL OF MATERIAL**  
(Northbound Deck)

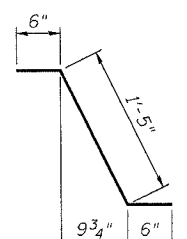
Bar	No.	Size	Length	Shape
a(E)	2109	#5	42'-6"	—
a1(E)	1236	#6	4'-6"	—
a2(E)	24	#5	2'-0"	—
a3(E)	6	#6	5'-0"	—
a4(E)	8	#6	2'-6"	—
b3(E)	8	#5	2'-3"	—
b120(E)	1012	#5	30'-3"	—
b121(E)	874	#5	29'-0"	—
b122(E)	258	#6	32'-9"	—
b123(E)	129	#6	28'-9"	—
d(E)	672	#4	3'-4"	┌
d1(E)	1342	#5	2'-5"	┌
d2(E)	670	#4	3'-5"	┌
d99(E)	590	#5	3'-6"	┌
x(E)	80	#5	4'-1"	┌
<b>Item</b>	<b>Unit</b>	<b>Total</b>		
Reinforcement Bars, Epoxy Coated	Pound	187,520		
Concrete Superstructure	Cu. Yd.	737.9		
Bridge Deck Grooving	Sq. Yd.	2,606		
Protective Coat	Sq. Yd.	2,743		

**BILL OF MATERIAL**  
(Northbound Parapets)

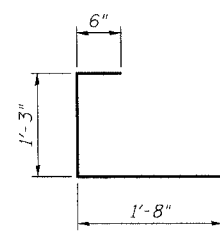
Bar	No.	Size	Length	Shape
d3(E)	1342	#4	3'-0"	┌
d4(E)	1342	#5	3'-0"	┌
e14(E)	8	#5	6'-0"	—
e120(E)	144	#4	19'-3"	—
e121(E)	32	#8	32'-9"	—
e122(E)	32	#5	31'-0"	—
e123(E)	96	#4	13'-9"	—
e124(E)	16	#8	27'-9"	—
e125(E)	16	#5	27'-9"	—
e126(E)	144	#4	19'-0"	—
e127(E)	32	#8	32'-3"	—
e128(E)	32	#5	30'-6"	—
e129(E)	24	#4	21'-9"	—
e130(E)	8	#8	21'-9"	—
e131(E)	8	#5	21'-9"	—
<b>Item</b>	<b>Unit</b>	<b>Total</b>		
Reinforcement Bars, Epoxy Coated	Pound	21,750		
Concrete Superstructure	Cu. Yd.	146.3		
Protective Coat	Sq. Yd.	537		



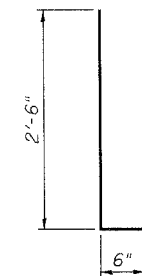
BAR d(E)



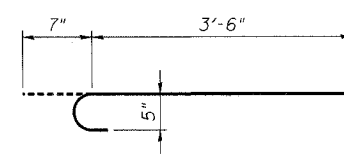
BAR d1(E)



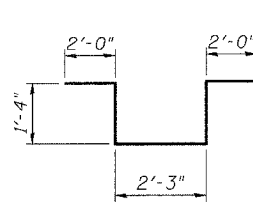
BAR d2(E)



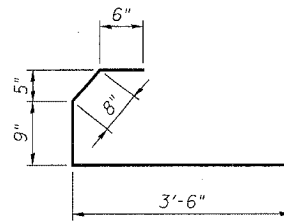
BARS d3(E) & d4(E)



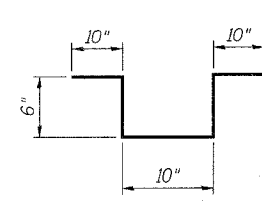
BAR x(E)



BAR d6(E)



BAR d8(E)



BAR d99(E)

**NOTES:**

1. Reinforcement bars designated (E) shall be epoxy coated.
2. All bar dimensions are out to out.

**BILL OF MATERIAL - SPANS 22 THRU 25**  
**ABRAHAM LINCOLN MEMORIAL BRIDGE OVER**  
**THE ILLINOIS RIVER (PUBLIC WATERS)**  
**F.A.I. ROUTE 39 SEC. (50-4B) BR**  
**LASALLE COUNTY**  
**STATION 863+16.00**  
**STRUCTURE NO. 050-0191 (SB & NB)**

**benesch**  
alfred benesch & company  
Engineers • Surveyors • Planners  
205 North Michigan Avenue, Suite 2400  
Chicago, Illinois 60601  
312-565-0450  
Job # 3856

DESIGNED -	AJK
CHECKED -	MRB
DRAWN -	VH
CHECKED -	MRB

xx:\3800s\3856\structures\abraham lincoln memorial\final\plans\all.dkbm2225.sht

3:01:43 PM

10/16/2006