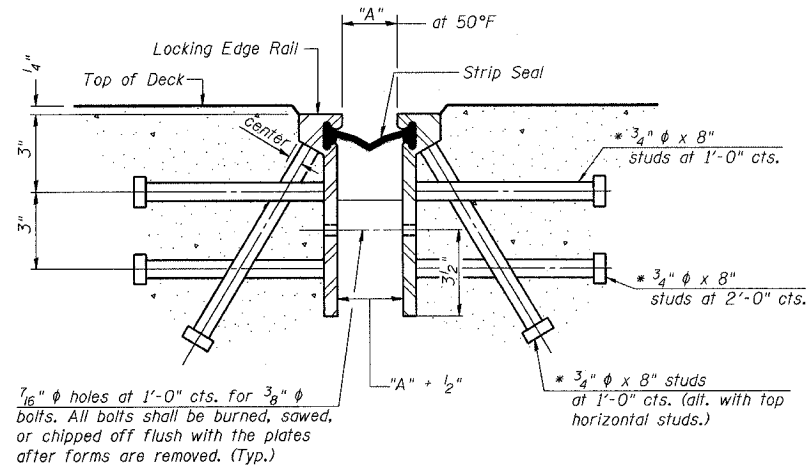


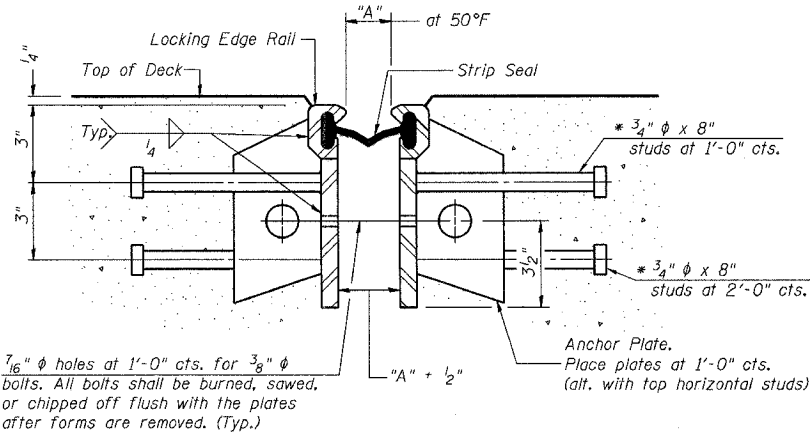
STATE OF ILLINOIS
DEPARTMENT OF TRANSPORTATION

ROUTE NO. F.A.I. 39	SECTION 50-4B	COUNTY LASALLE	SHEETS 193	SHEET	SHEET NO. 170
FED. ROAD DIST. NO. 7				ILLINOIS	FED. AID PROJECT

313 SHEETS
Contract # 66586



SECTION THRU ROLLED RAIL EXP. JOINT



SECTION THRU WELDED RAIL EXP. JOINT

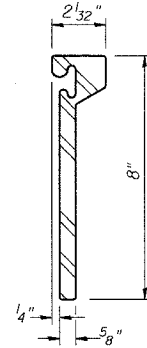
* Granular or solid flux filled headed studs conforming to Article 1006.32 of the Std. Specs., automatically end welded.

Location	"A" at 50°F	Length	Rolled Rail Option		Welded Rail Option	
			No. of Studs	No. of Studs	No. of Anchor Plates	
S. Abut. SB	2"	41'-0"	210	130	80	
S. Abut. NB	2"	41'-0"	210	130	80	
N. Abut. SB	2"	47'-8 1/2"	240	148	92	
N. Abut. NB	2"	47'-8 1/2"	240	148	92	
Tied Arch Span SB**	2"	41'-0"	210	130	80	
Tied Arch Span NB**	2"	41'-0"	210	130	80	

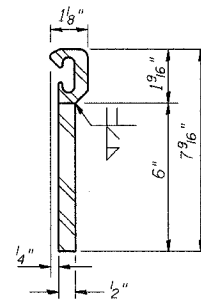
** At 4 locations

BILL OF MATERIAL

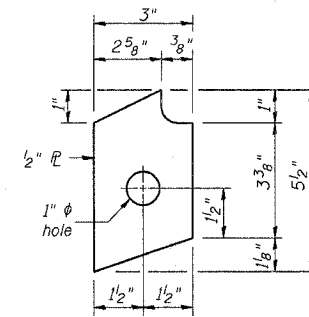
Item	Unit	Total
Preformed Joint Strip Seal 4"	Foot	506



ROLLED (EXTRUDED) RAIL

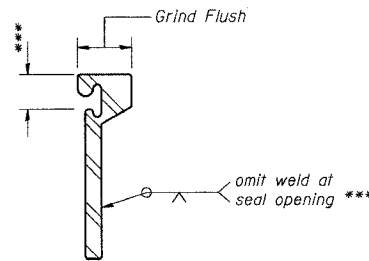


WELDED RAIL



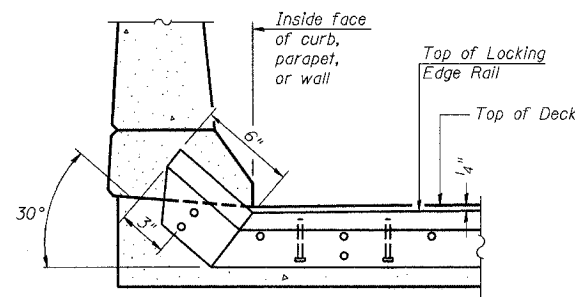
ANCHOR PLATE

(for welded rail)

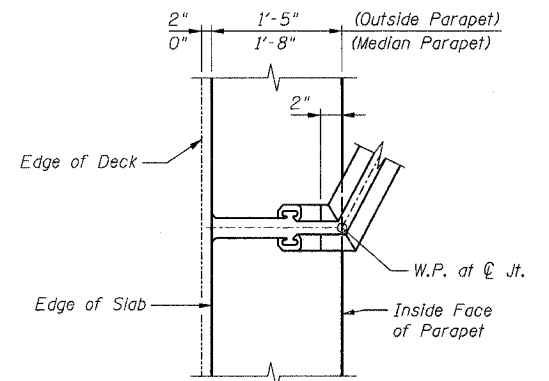


LOCKING EDGE RAIL SPLICE

The inside of the locking edge rail groove shall be free of weld residue.



AT CURB, PARAPET OR WALL



PLAN - SLAB BREAK AT PARAPET

(N. Abut.)

TYPICAL END TREATMENTS

NOTES:

- The strip seal shall be made continuous and shall have a minimum thickness of 1/4". The configuration of the strip seal shall match the configuration of the Locking Edge Rails.
- The height and thickness of the Locking Edge Rails shown are minimum dimensions. The actual configuration of the Locking Edge Rails and matching strip seal may vary from manufacturer to manufacturer. Flanged edge rails will not be allowed.
- Locking Edge Rails may be spliced at slope discontinuities and stage construction joints.
- The manufacturer's recommended installation methods shall be followed.
- The strip seal joint shall have a rated movement equal to 4".

STRIP SEAL EXPANSION JOINT
ABRAHAM LINCOLN BRIDGE OVER
THE ILLINOIS RIVER (PUBLIC WATERS)

F.A.I. ROUTE 39 SEC. (50-4B) BR

LASALLE COUNTY

STATION 863+16.00

STRUCTURE NO. 050-0191 (SB & NB)

benesch

alfred benesch & company
Engineers • Surveyors • Planners
205 North Michigan Avenue, Suite 2400
Chicago, Illinois 60601
312-665-0450
Job # 3856

DESIGNED -	MRB
CHECKED -	HMA
DRAWN -	RMG
CHECKED -	MRB

x:\38000s\3856\structures\abe lincoln memorial\final\plans\AL_exp112.SHT

3:35:20 PM

8/30/2006