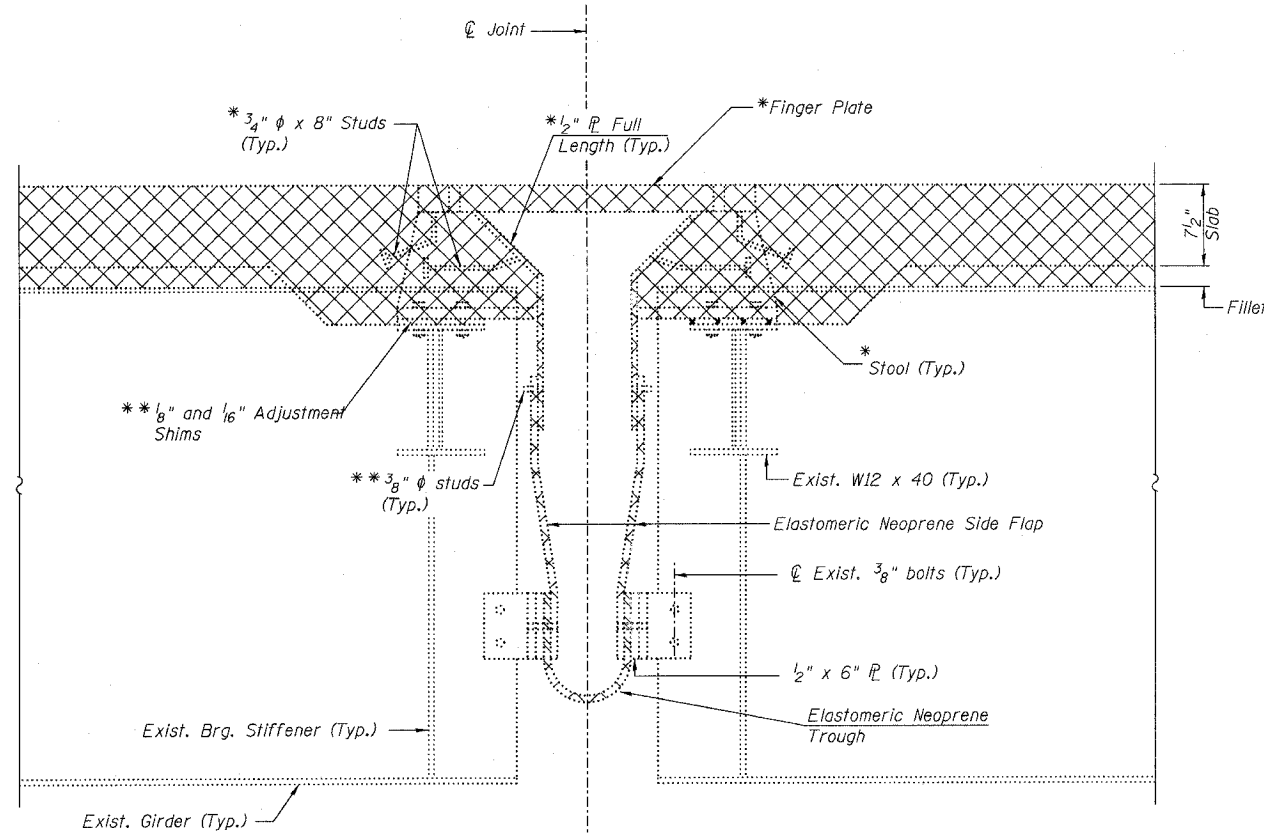


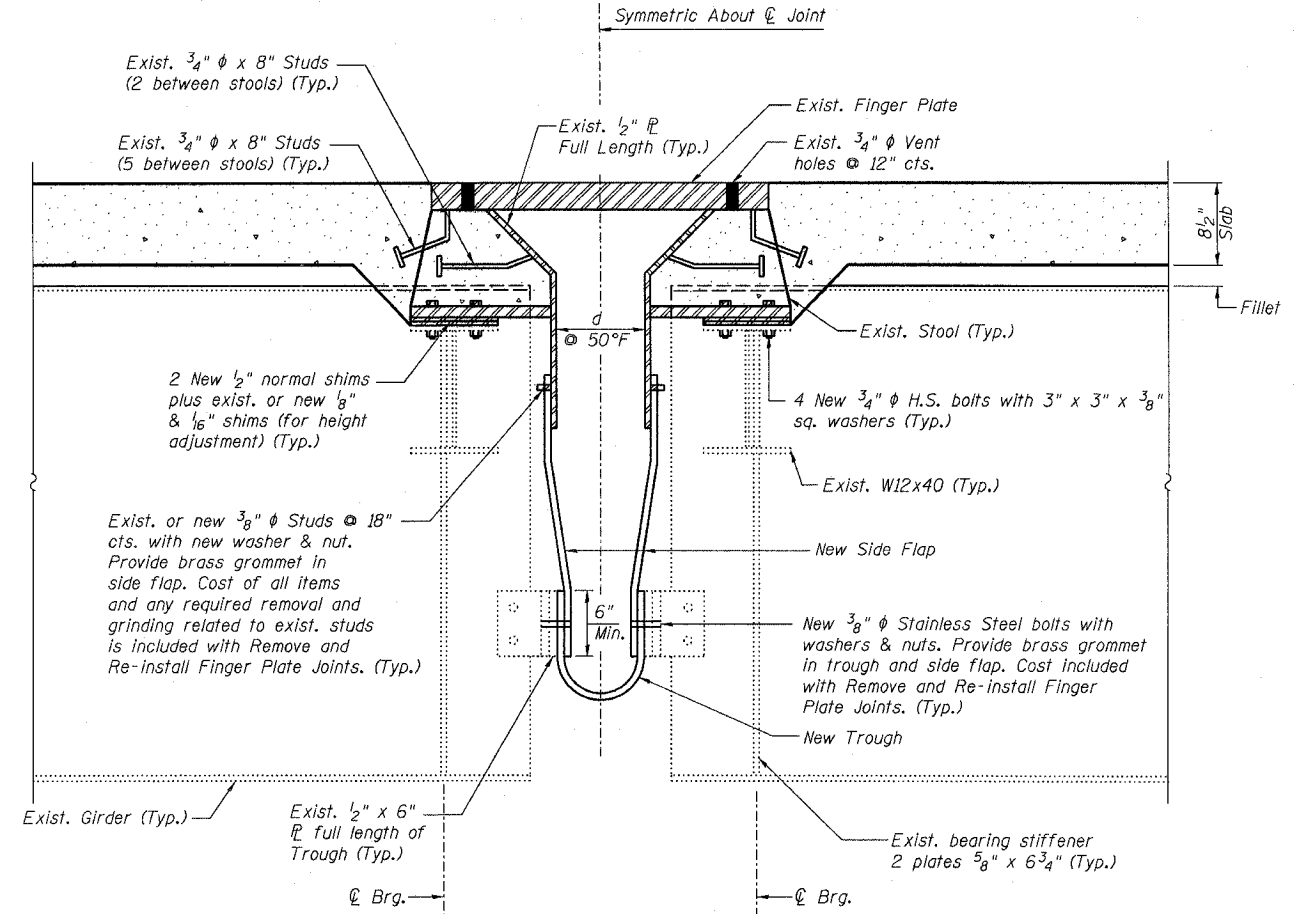
STATE OF ILLINOIS  
DEPARTMENT OF TRANSPORTATION

ROUTE NO.	SECTION	COUNTY	TOTAL SHEETS	SHEET	SHEET NO. 171
F.A.I. 39	50-4B	LASALLE		194	313 SHEETS
FED. ROAD DIST. NO. 7	ILLINOIS	FED. AID PROJECT	Contract # 66586		



**EXISTING FINGER PLATE JOINT REMOVAL**

\* Indicates remove from deck and reuse  
\*\* Indicates reuse if in good condition



**FINGER PLATE JOINT REINSTALLATION**

(Weight of new 1/2" Shims Required = 1,640 lbs per joint, 12 Thus)  
(Cost of shims shall be included with Remove and Re-install Finger Plate Joints)

**EXISTING AND PROPOSED JOINT DIMENSIONS**

Location	Approximate Expansion (in.)	"d"=(EXP + 3") @ 50°F (in.)
Pier #2	3.375	6.375
Pier #6	3.869	6.869
Pier #10	3.869	6.869
Pier #14	3.375	6.375
Pier #17	3.375	6.375
Pier #21	3.869	6.869
Pier #25	3.375	6.375
Pier #28	2.750	5.750
Pier #31	2.750	5.750
Pier #38	2.750	5.750
Pier #41	2.750	5.750
Pier #43	1.250	4.250

**NOTES:**

1. Cross Hatched areas indicate removal of concrete slab, finger plate expansion joint, stools, trough, and side flap.
2. Existing finger plate and components shall be cleaned, painted and incorporated into the new concrete to match the top of proposed deck cross section.
3. Reinforcement bars in slab not shown for clarity.
4. All steel for shims shall be AASHTO M270 Grade 36.
5. See Special Provisions "Fabric Reinforced Elastomeric Trough" for the new Side Flap & Trough requirements. The length of the side flap should be field verified in order to accommodate the proposed top of slab elevations.

**FINGER PLATE EXPANSION JOINT  
DETAILS - AT TYPICAL PIERS**  
**ABRAHAM LINCOLN MEMORIAL BRIDGE OVER  
THE ILLINOIS RIVER (PUBLIC WATERS)**  
**F.A.I. ROUTE 39 SEC. (50-4B) BR  
LASALLE COUNTY  
STATION 863+16.00  
STRUCTURE NO. 050-0191 (SB & NB)**

**LIN ENGINEERING, LTD.**  
210 W. Chestnut  
Chatham, Illinois 62629  
(217) 483-4168  
FAX (217) 483-4706

**benesch**  
alfred benesch & company  
Engineers • Surveyors • Planners  
205 North Michigan Avenue, Suite 2400  
Chicago, Illinois 60601  
312-565-0450  
Job # 3856

DESIGNED -	AJK
CHECKED -	MRB
DRAWN -	KHH
CHECKED -	MTH

x:\3800s\3856\structures\abe\lincoln\memorial\final\plans\Typical Joint.sht

9:04:07 AM

8/30/2006