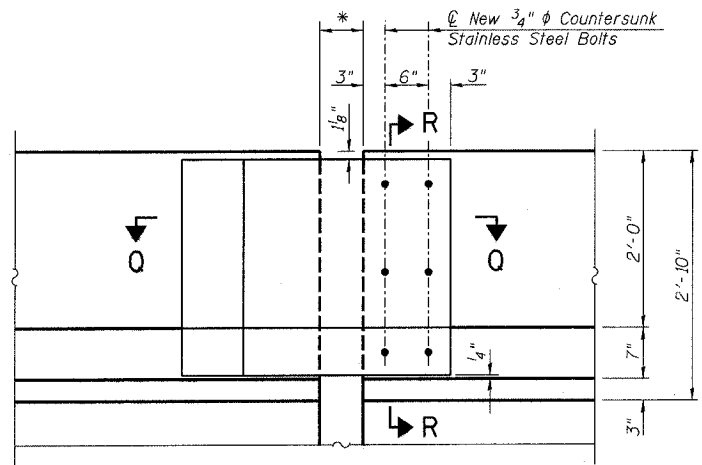


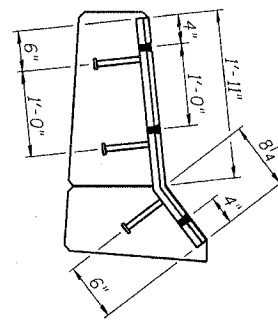
STATE OF ILLINOIS
DEPARTMENT OF TRANSPORTATION

ROUTE NO.	SECTION	COUNTY	SHEET NO.	SHEET
F.A.I. 39	50-4B	LASALLE	197	174
FED. ROAD DIST. NO. 7	ILLINOIS	FED. AID PROJECT	Contract # 66586	

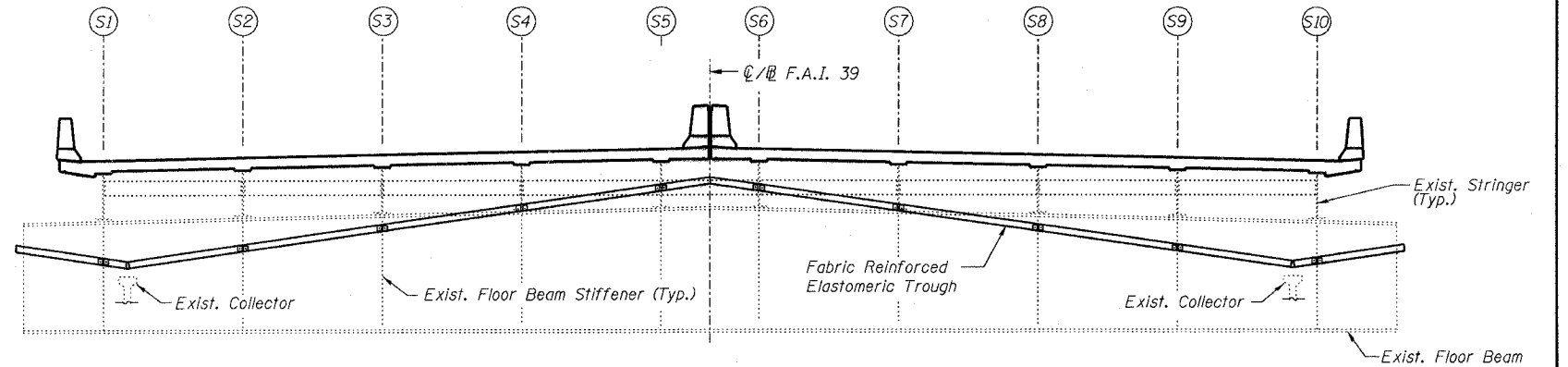
SHEET NO. 174
313 SHEETS



INSIDE ELEVATION - PARAPET SLIDING PLATE

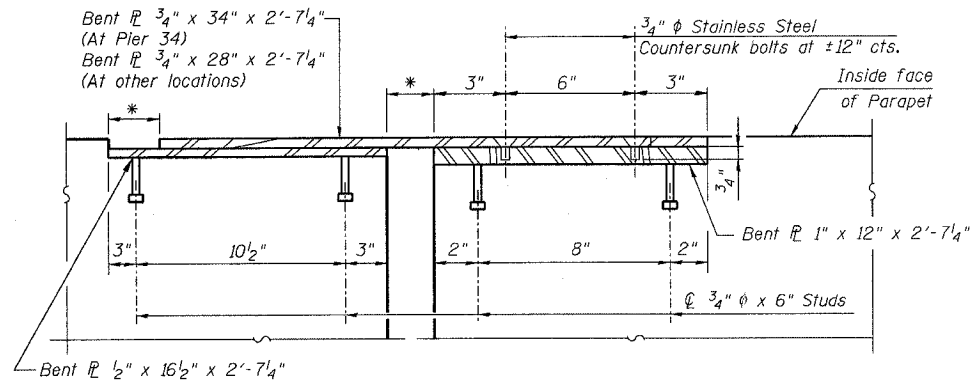


SECTION R-R



TROUGH ELEVATION

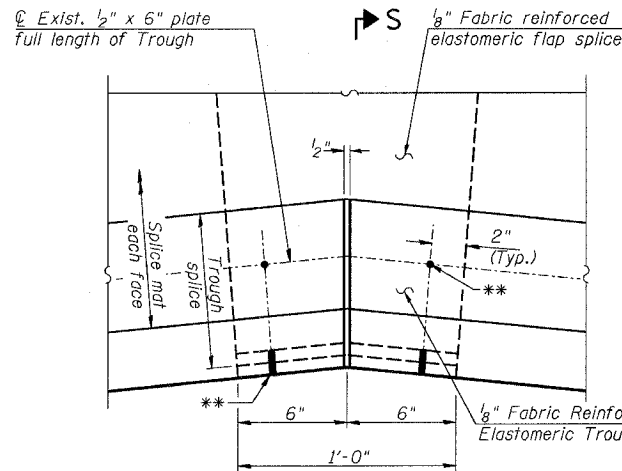
(At Pier 34 - Looking Upstation, Pier 35 similar)
(Side Flap not shown for clarity)



SECTION Q-Q

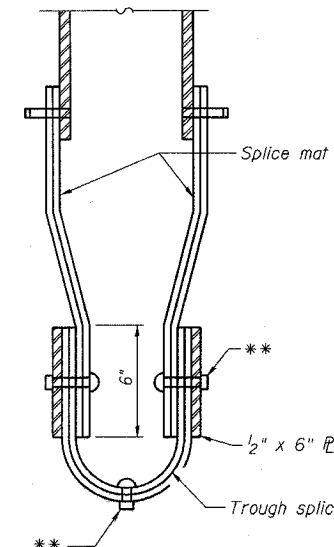
(Expansion Plate and Embedded Plates shall be galvanized according to AASHTO M111.)

* Expansion opening



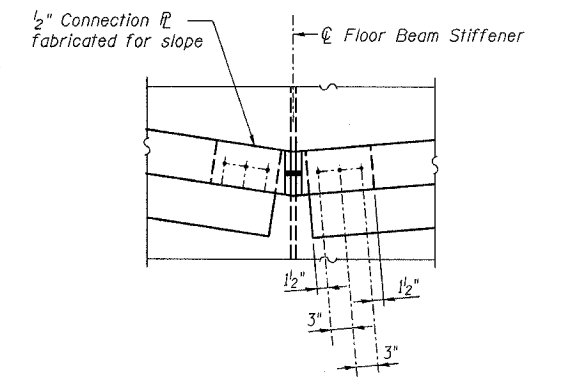
TROUGH SPLICE DETAIL

(Where applicable)



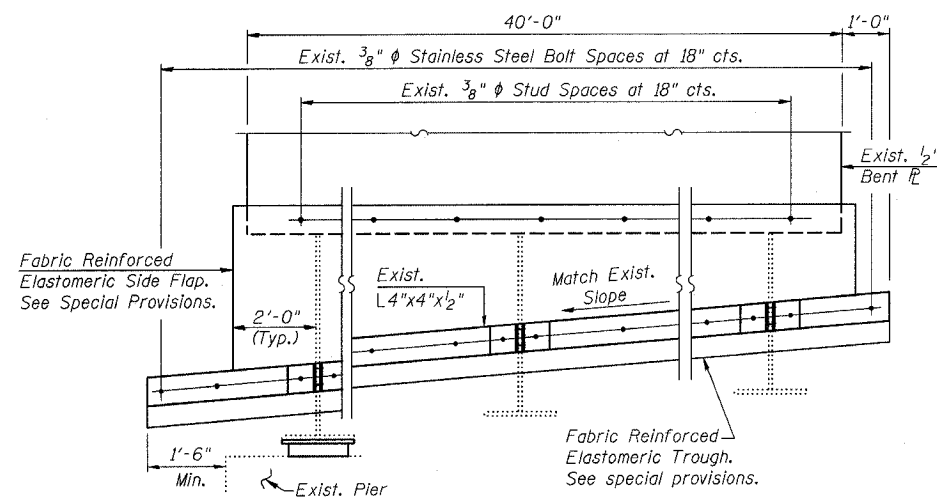
SECTION S-S

** 3/8" ϕ Stainless Steel bolts w/washers and nuts. Provide brass grommet in trough.



CONNECTION R DETAIL AT COLLECTOR

(Arch side only)



TROUGH DETAIL

DESIGNED -	AJK
CHECKED -	MRB
DRAWN -	KHH
CHECKED -	MTH

NOTES:

- All steel for parapet plates shall be AASHTO M270 Grade 36.
- The cost of parapet plates shall be included with Furnishing and Erecting Structural Steel.

LIN ENGINEERING, LTD.
210 W. Chestnut
Chatham, Illinois 62629
(217) 483-4168
FAX (217) 483-4706

benesch
alfred benesch & company
Engineers • Surveyors • Planners
205 North Michigan Avenue, Suite 2400
Chicago, Illinois 60601
312-665-0450
Job # 3856

FINGER PLATE EXPANSION JT. DETAILS
ABRAHAM LINCOLN MEMORIAL BRIDGE OVER
THE ILLINOIS RIVER (PUBLIC WATERS)
F.A.I. ROUTE 39 SEC. (50-4B) BR
LASALLE COUNTY
STATION 863+16.00
STRUCTURE NO. 050-0191 (SB & NB)

8/30/2006 9:04:14 AM x:\3800s\3856\structures\abe lincoln memorial\final\plans\JOINT_Details.sht