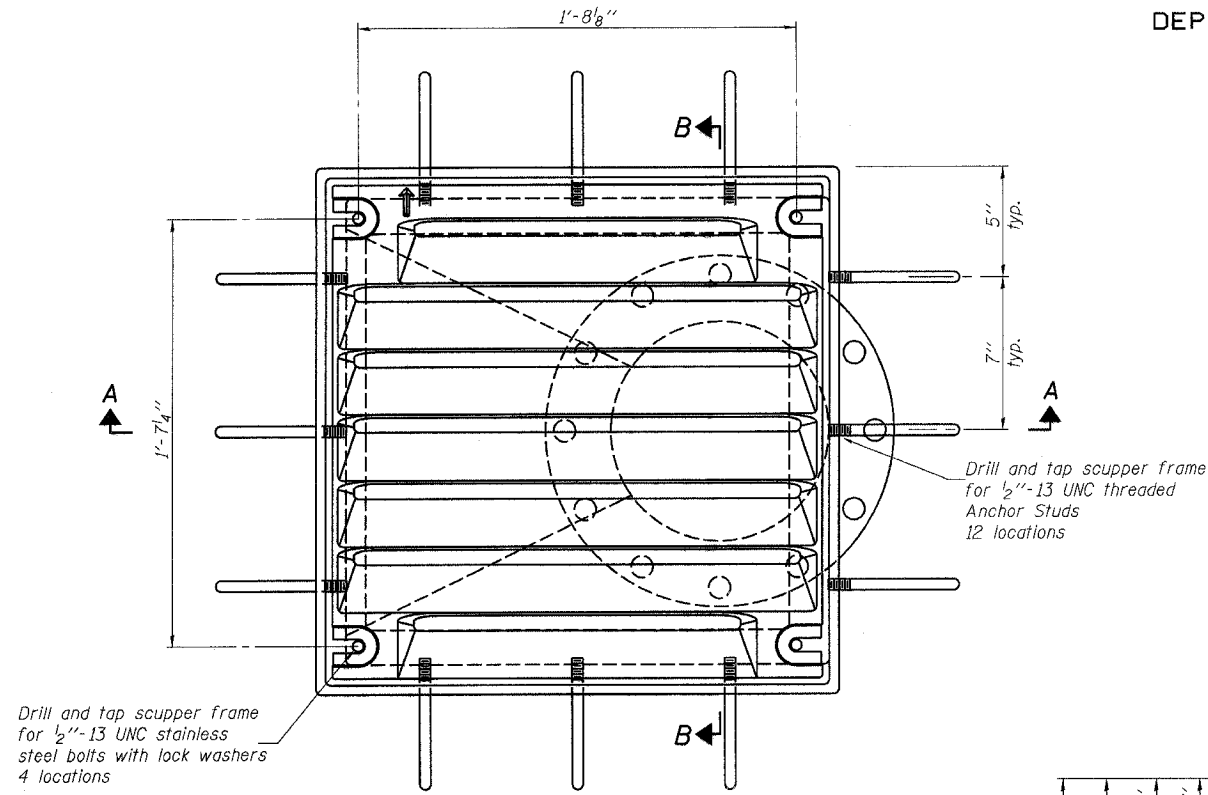


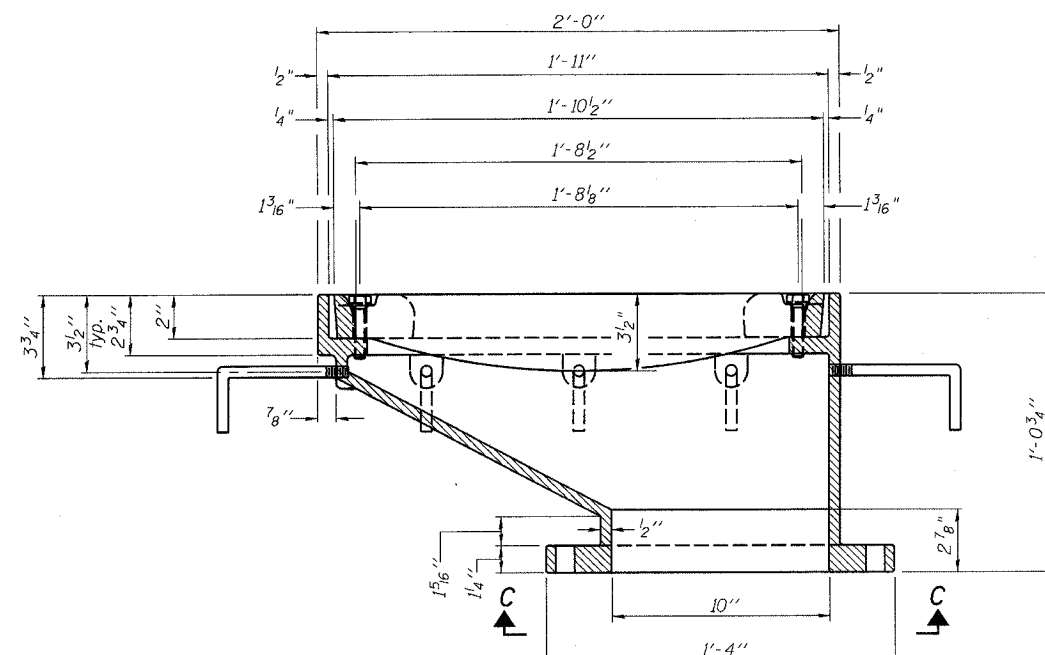
STATE OF ILLINOIS
DEPARTMENT OF TRANSPORTATION

ROUTE NO.	SECTION	COUNTY	SHEET NO.	SHEET	SHEET NO. 178 313 SHEETS
F.A.I. 39	50-4B	LASALLE		201	
FED. ROAD DIST. NO. 7		ILLINOIS		FED. AID PROJECT	

Contract # 66586



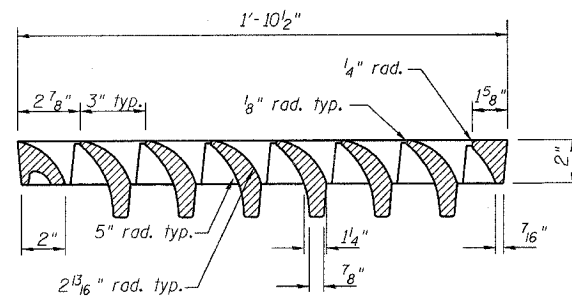
PLAN



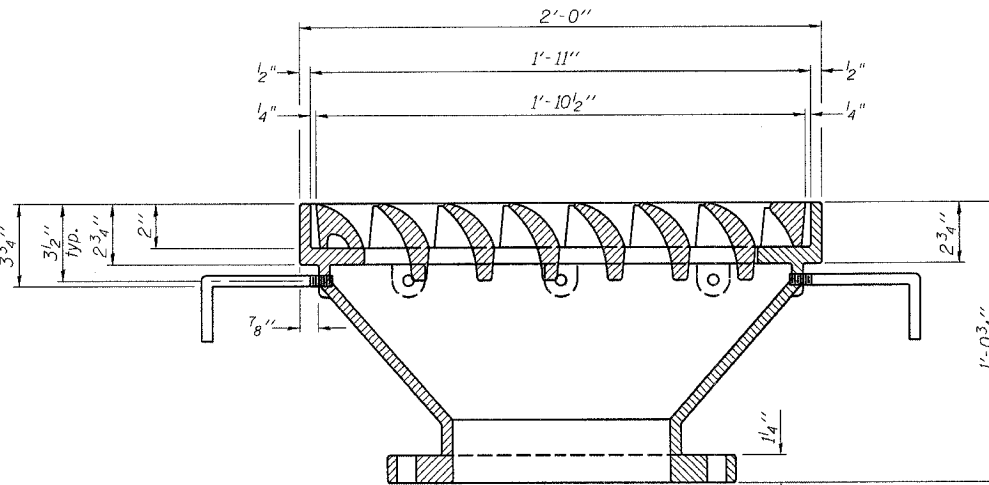
SECTION A-A

For scupper location relative to parapet see sheets 166 and 166a.

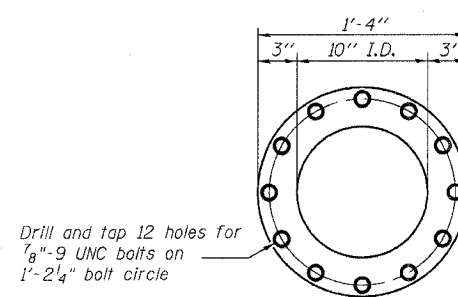
DESIGNED -	MRB
CHECKED -	HMA
DRAWN -	VH
CHECKED -	MRB



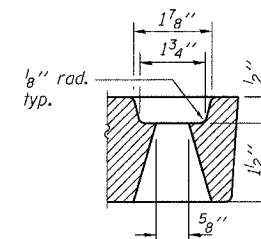
VANE GRATE DETAIL



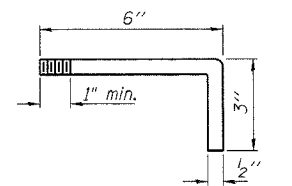
SECTION B-B



VIEW C-C



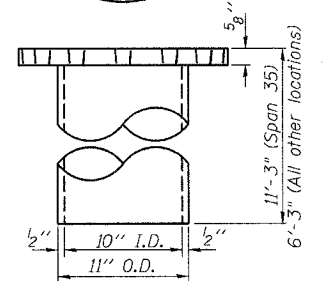
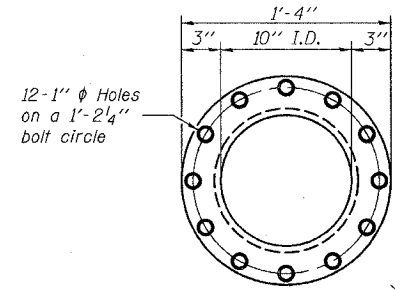
GRATE BOLT HOLE DETAIL



ANCHOR STUD DETAIL

BILL OF MATERIAL

Item	Unit	Quantity
Drainage Scupper, DS-12M10	Each	36



DOWNSPOUT

Notes:

- All cast iron parts shall be gray iron conforming to the requirements of AASHTO M 105, Class 35B.
- Bolts, anchor studs, washers and nuts shall conform to the requirements of ASTM A 307 and shall be galvanized according to AASHTO M 232.
- All castings shall conform to the requirements of AASHTO M 306.
- Downspouts located on the exterior side of a painted steel fascia beam shall be painted with the finish coat specified for the exterior side of the fascia beam.
- As an alternate, bolts, anchor studs, washers and nuts may be stainless steel according to Article 1006.29(d) of the Standard Specifications.
- Structural steel weldments of equal section and of the same configuration may be substituted for the cast iron scupper frame. Fillet or full penetration welds shall be used for the weldments. Details shall be submitted to the Engineer for approval.
- Structural steel weldments shall not be substituted for the cast iron scupper grate. If this option is chosen, the grate, frame and downspout shall be galvanized according to AASHTO M111.
- The Contractor shall take appropriate measures to assure that Protective Coat is not applied to the scupper.
- Cost of the Grate, Frame, Downspout, Anchor Studs, Bolts, Washers and Nuts including complete installation of the scupper shall be paid for at the contract unit price each for Drainage Scupper, DS-12M10.
- Alternate fiberglass downspout may be used in lieu of cast iron equivalent.

DRAINAGE SCUPPER DETAILS, DS-12M10
ABRAHAM LINCOLN MEMORIAL BRIDGE OVER
THE ILLINOIS RIVER (PUBLIC WATERS)
F.A.I. ROUTE 39 SEC. (50-4B) BR
LASALLE COUNTY
STATION 863+16.00
STRUCTURE NO. 050-0191 (SB & NB)

benesch

alfred benesch & company
Engineers • Surveyors • Planners
205 North Michigan Avenue, Suite 2400
Chicago, Illinois 60601
312-665-0450
Job # 3856