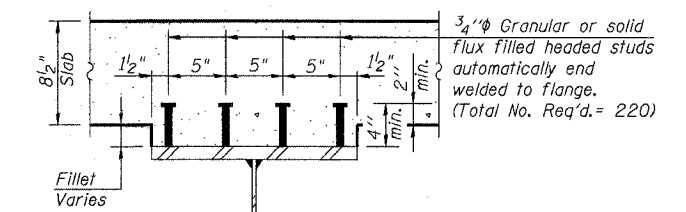
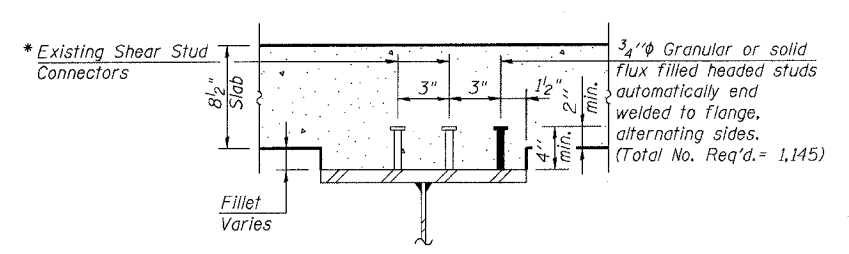
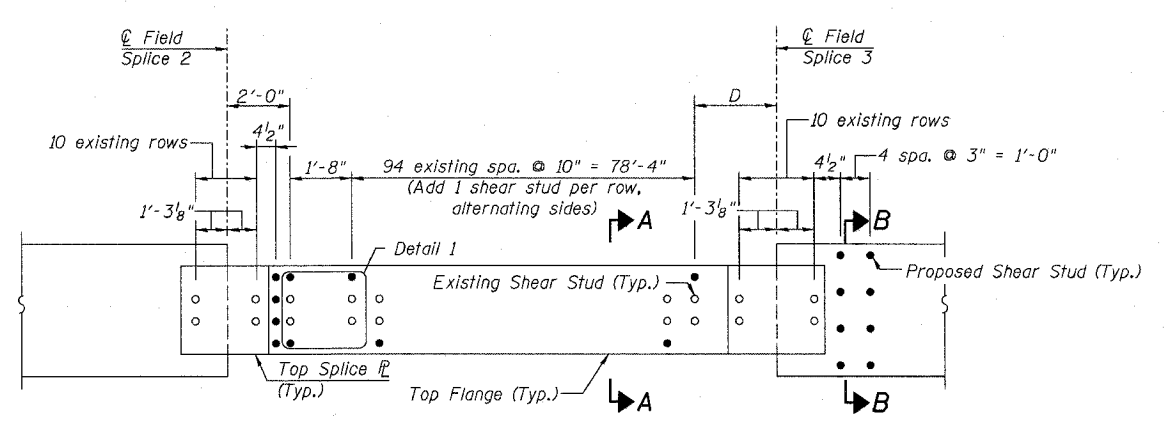
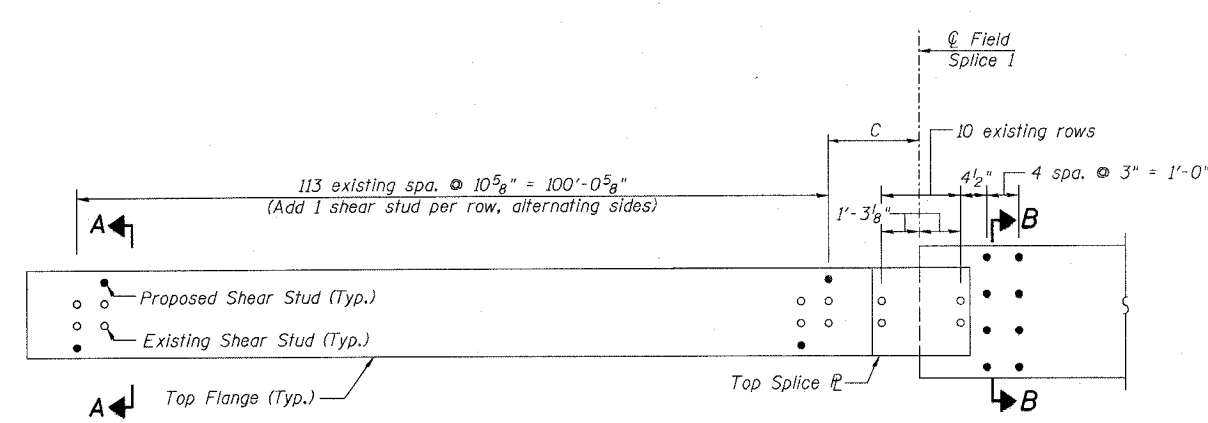
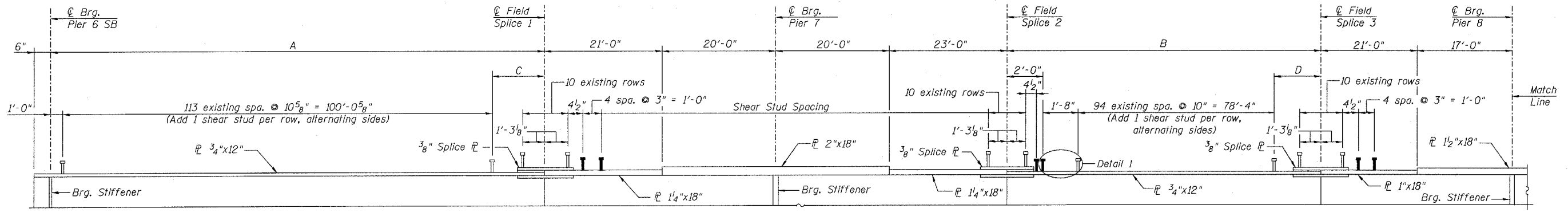


STATE OF ILLINOIS
DEPARTMENT OF TRANSPORTATION

ROUTE NO.	SECTION	COUNTY	TOTAL SHEETS	SHEET NO.
F.A.I. 39	50-4B	LASALLE	205	182
FED. ROAD DIST. NO. 7		ILLINOIS		FED. AID PROJECT

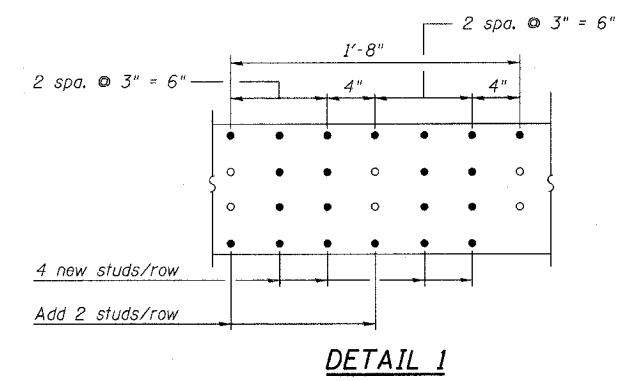
Contract # 66586



* Fillet reinforcement will be required if existing studs do not meet the minimum projection into proposed deck. See detail on sheet 168.

GIRDER VARIABLES

Girder	A	B	C	D
G1	103'-10 5/8"	84'-9 1/4"	2'-10"	2'-9 1/4"
G2	103'-8 1/2"	84'-7 3/8"	2'-7 1/8"	2'-7 3/8"
G3	103'-6 3/8"	84'-5 1/6"	2'-5 3/4"	2'-5 1/6"
G4	103'-4 5/8"	84'-2 5/8"	2'-3 1/6"	2'-2 5/8"
G5	103'-2 3/8"	84'-0 1/8"	2'-1 1/6"	2'-0 1/8"



SHEAR STUDS - SPANS 7 & 8 SB
ABRAHAM LINCOLN MEMORIAL BRIDGE OVER
THE ILLINOIS RIVER (PUBLIC WATERS)
F.A.I. ROUTE 39 SEC. (50-4B) BR
LASALLE COUNTY
STATION 863+16.00
STRUCTURE NO. 050-0191 (SB & NB)

benesch
alfred benesch & company
Engineers - Surveyors - Planners
205 North Michigan Avenue, Suite 2400
Chicago, Illinois 60601
312-565-0450
Job # 3886

LIN ENGINEERING, LTD.
210 W. Chestnut
Chatham, Illinois 62629
(217) 483-4168
FAX (217) 483-4106

8/30/2006 9:04:31 AM x:\3800s\3856\structures\abe lincoln memorial\final\plans\Studs.7&8SB.sht