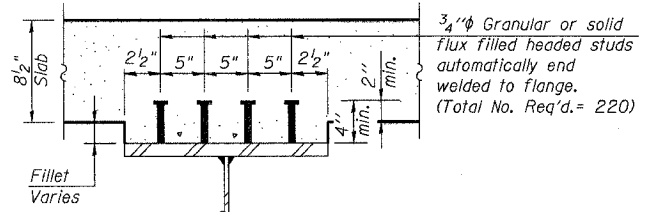
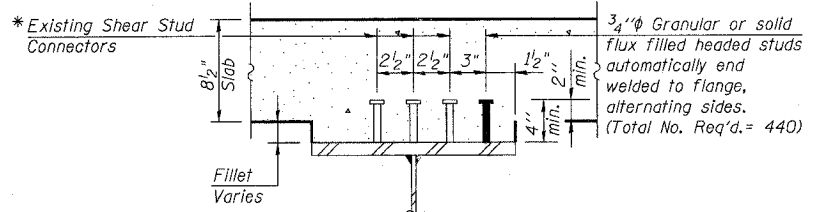
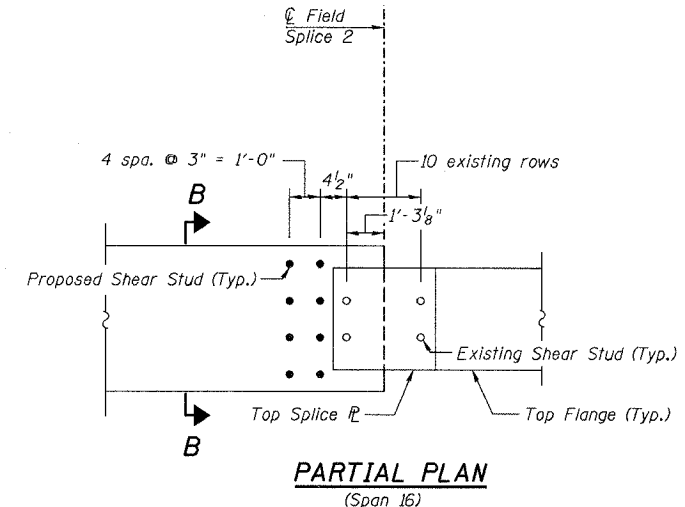
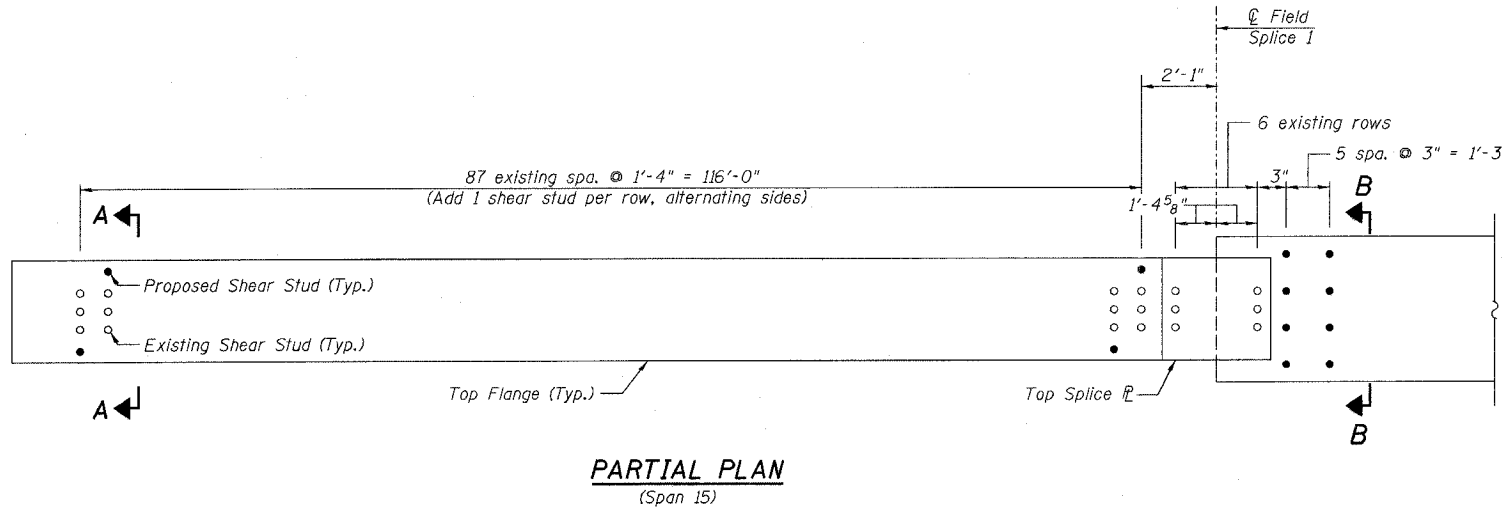
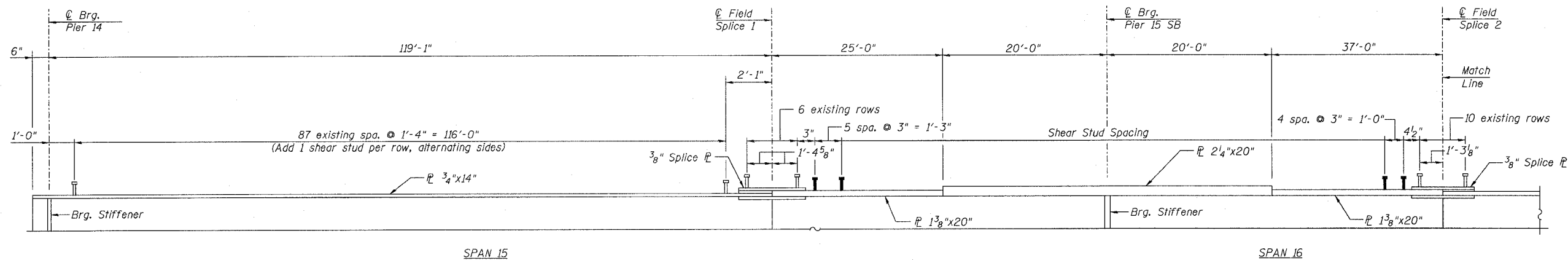


STATE OF ILLINOIS
DEPARTMENT OF TRANSPORTATION

| | | | | | |
|-----------------------|---------|----------|------------------|-----------|-----------------------------|
| ROUTE NO. | SECTION | COUNTY | TOTAL SHEETS | SHEET NO. | SHEET NO. 187 313 SHEETS |
| F.A.I. 39 | 50-4B | LASALLE | | 210 | |
| FED. ROAD DIST. NO. 7 | | ILLINOIS | FED. AID PROJECT | | |

Contract # 66586



* Fillet reinforcement will be required if existing studs do not meet the minimum projection into proposed deck. See detail on sheet 168.

SHEAR STUDS - SPANS 15 & 16 SB
ABRAHAM LINCOLN MEMORIAL BRIDGE OVER
THE ILLINOIS RIVER (PUBLIC WATERS)
F.A.I. ROUTE 39 SEC. (50-4B) BR
LASALLE COUNTY
STATION 863+16.00
STRUCTURE NO. 050-0191 (SB & NB)

| | |
|------------|-----|
| DESIGNED - | KWS |
| CHECKED - | MRB |
| DRAWN - | JGY |
| CHECKED - | MTH |

LIN ENGINEERING, LTD.
210 W. Chestnut
Chatham, Illinois 62629
(217) 483-4168
FAX (217) 483-4706

benesch
alfred benesch & company
Engineers - Surveyors - Planners
205 North Michigan Avenue, Suite 2400
Chicago, Illinois 60601
312-565-0450
Job # 3856

8/30/2006 9:04:41 AM x:\38600s\3856\structures\abe\lincoln\memorial\final\plans\Studs_15&16SB.sht