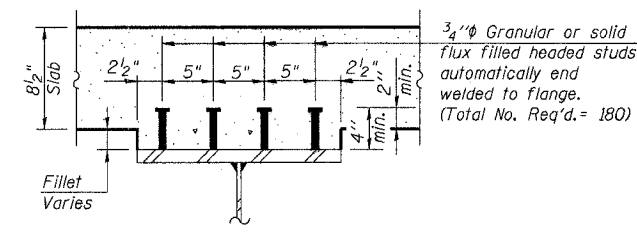
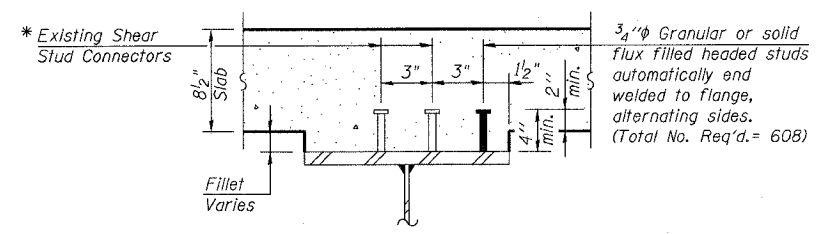
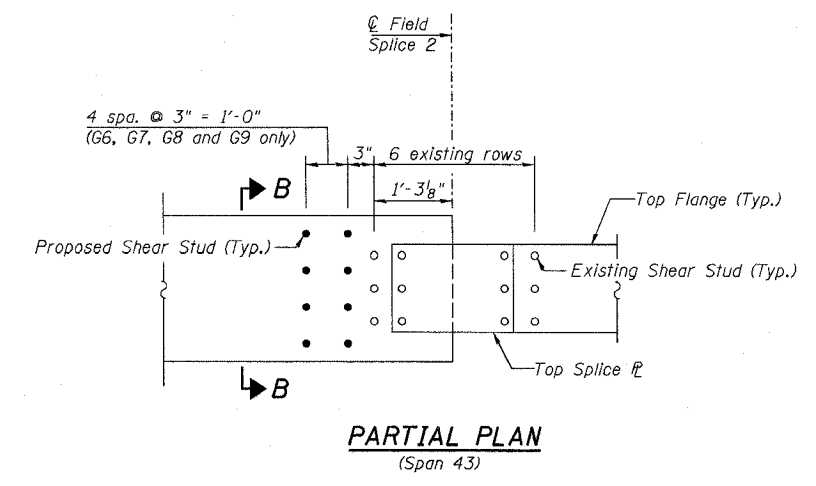
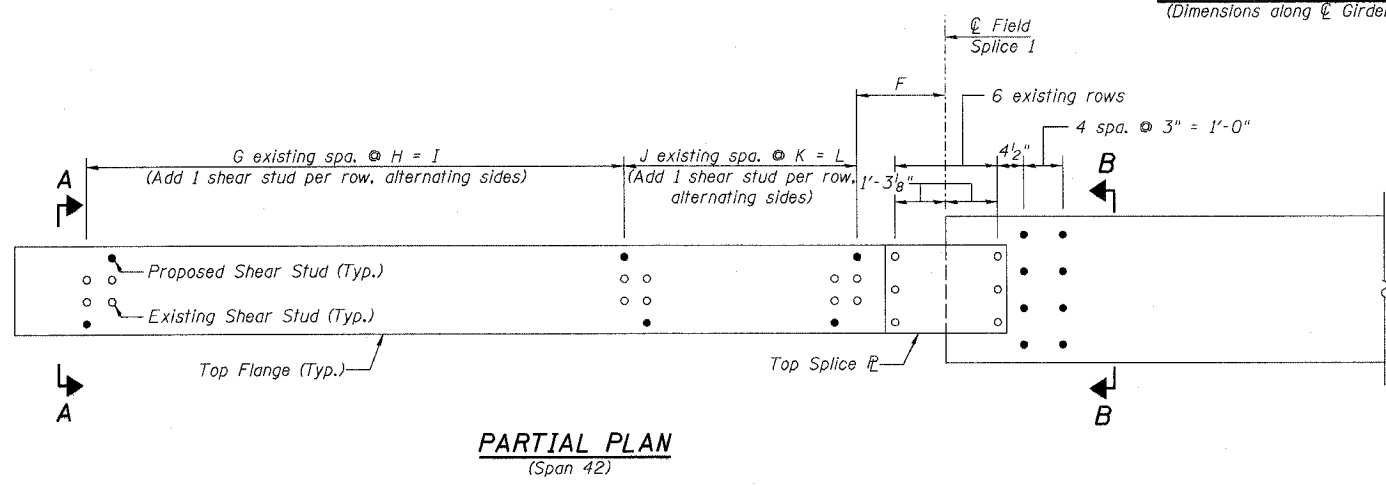
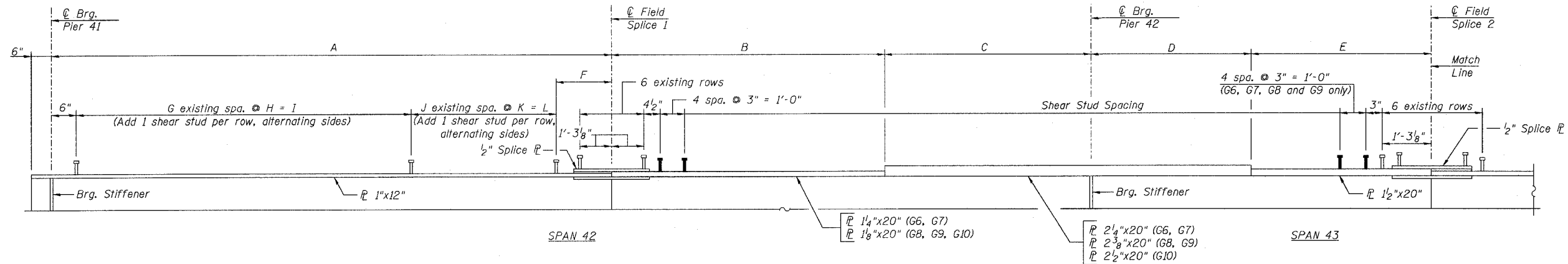


STATE OF ILLINOIS
DEPARTMENT OF TRANSPORTATION

ROUTE NO.	SECTION	COUNTY	SHEET	SHEET NO.
F.A.I. 39	50-4B	LASALLE	227	197
FED. ROAD DIST. NO. 7		ILLINOIS FED. AID PROJECT		313 SHEETS

Contract # 66586



* Fillet reinforcement will be required if existing studs do not meet the minimum projection into proposed deck. See detail on sheet 168.

GIRDER VARIABLES

Girder	A	B	C	D	E	F	G	H	I	J	K	L
G6	104'-11 5/8"	32'-6"	36'-6"	25'-0"	28'-0"	2'-0 5/16"	95	10 5/8"	84'-1 3/8"	17	1'-0 5/16"	18'-3 5/16"
G7	110'-4 5/8"	32'-6"	36'-6"	25'-0"	29'-0"	1'-9 5/8"	92	10 5/8"	81'-5 1/2"	24	1'-1 5/16"	26'-7 1/2"
G8	115'-9 3/4"	27'-6"	41'-6"	26'-6"	29'-6"	1'-10 1/2"	90	10 1/16"	80'-1 7/8"	30	1'-1 5/16"	33'-3 3/8"
G9	121'-2 3/4"	28'-0"	41'-0"	27'-0"	29'-0"	1'-11 3/8"	96	10 1/16"	85'-6"	30	1'-1 5/16"	33'-3 3/8"
G10	124'-7 3/4"	27'-0"	44'-0"	29'-6"	24'-6"	2'-0 7/16"	96	10 1/16"	85'-6"	33	1'-1 5/16"	36'-7 5/16"

DESIGNED -	KWS
CHECKED -	MRB
DRAWN -	JGY
CHECKED -	MTH

LIN ENGINEERING, LTD.
210 W. Chestnut
Chatham, Illinois 62629
(217) 483-4168
FAX (217) 483-4706

benesch
alfred benesch & company
Engineers • Surveyors • Planners
205 North Michigan Avenue, Suite 2400
Chicago, Illinois 60601
312-565-0450
Job # 3856

SHEAR STUDS - SPANS 42 & 43 NB
ABRAHAM LINCOLN MEMORIAL BRIDGE OVER
THE ILLINOIS RIVER (PUBLIC WATERS)
F.A.I. ROUTE 39 SEC. (50-4B) BR
LASALLE COUNTY
STATION 863+16.00
STRUCTURE NO. 050-0191 (SB & NB)

8/30/2006 9:05:08 AM x:\3800s\3855\structures\abe\lincoln\memor\al\find\plans\studs_42&43NB.sht