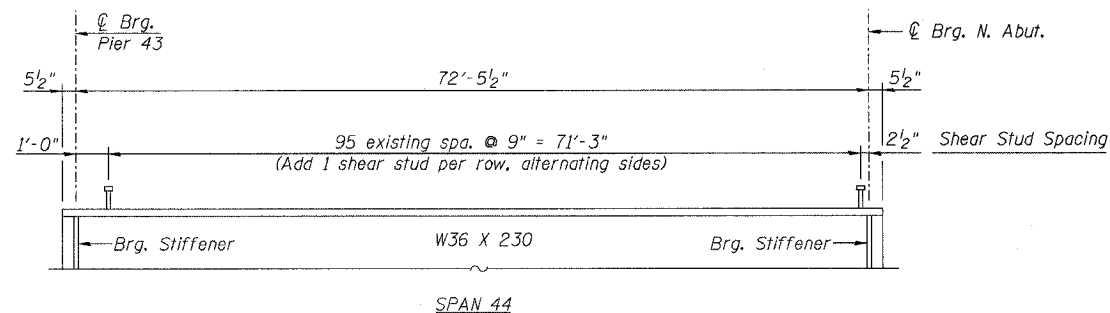


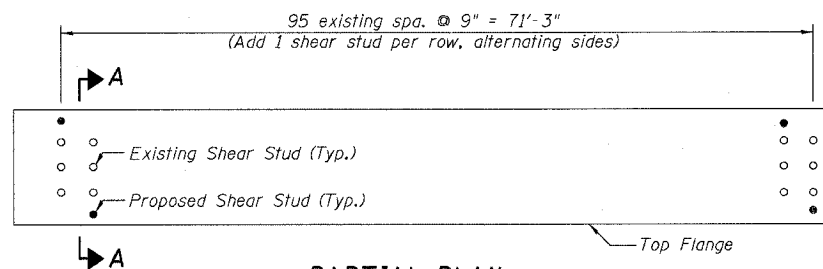
STATE OF ILLINOIS
DEPARTMENT OF TRANSPORTATION

ROUTE NO.	SECTION	COUNTY	TOTAL SHEETS	SHEET	SHEET NO. 200
F.A.I. 39	50-4B	LASALLE		225	313 SHEETS
FED. ROAD DIST. NO. 7	ILLINOIS	FED. AID PROJECT			

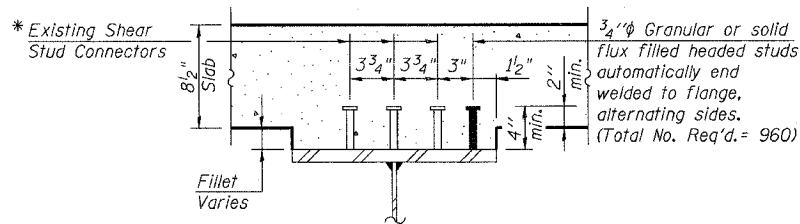
Contract # 66586



BEAM ELEVATION
(Dimensions along ϕ Beam)



PARTIAL PLAN
(Span 44)



SECTION A-A

* Fillet reinforcement will be required if existing studs do not meet the minimum projection into proposed deck. See detail on sheet 168.



DESIGNED -	KWS
CHECKED -	MRB
DRAWN -	JGY
CHECKED -	MTH

LIN ENGINEERING, LTD.
210 W. Chestnut
Chattanooga, Illinois 62629
(217) 483-4668
FAX (217) 483-4706

benesch
alfred benesch & company
Engineers • Surveyors • Planners
205 North Michigan Avenue, Suite 2400
Chicago, Illinois 60601
312-565-0450
Job # 3856

SHEAR STUDS - SPAN 44
ABRAHAM LINCOLN MEMORIAL BRIDGE OVER
THE ILLINOIS RIVER (PUBLIC WATERS)
F.A.I. ROUTE 39 SEC. (50-4B) BR
LASALLE COUNTY
STATION 863+16.00
STRUCTURE NO. 050-0191 (SB & NB)

x:\3800s\3856\structures\abe lincoln memorial\final\plans\Studs_44.sht

9:05:15 AM

8/30/2006