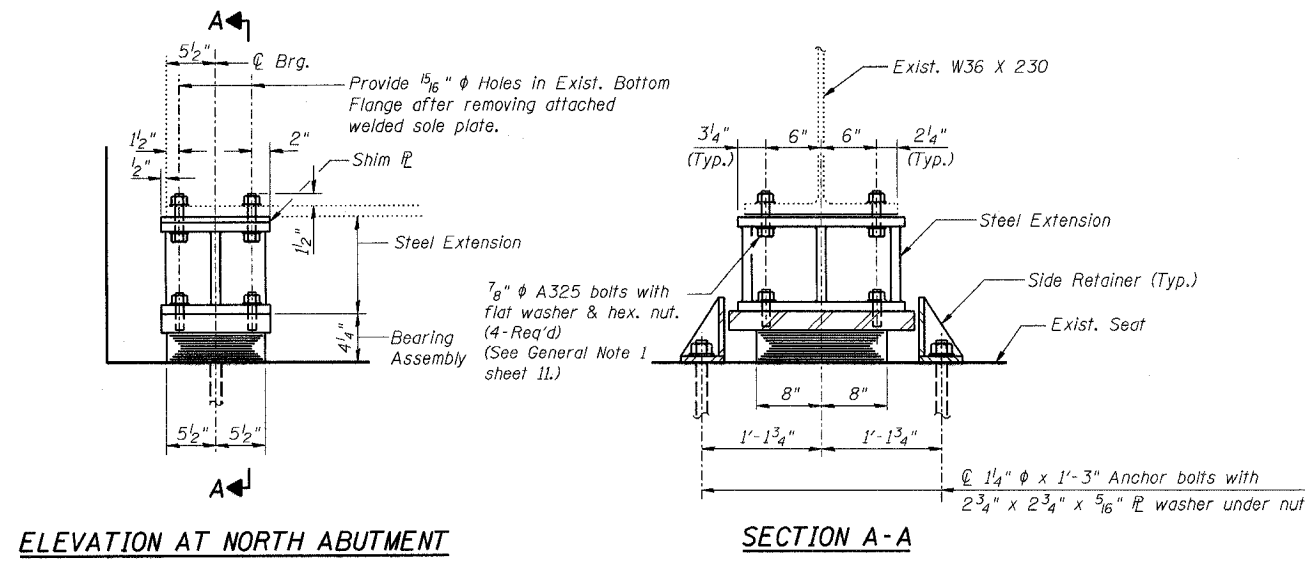


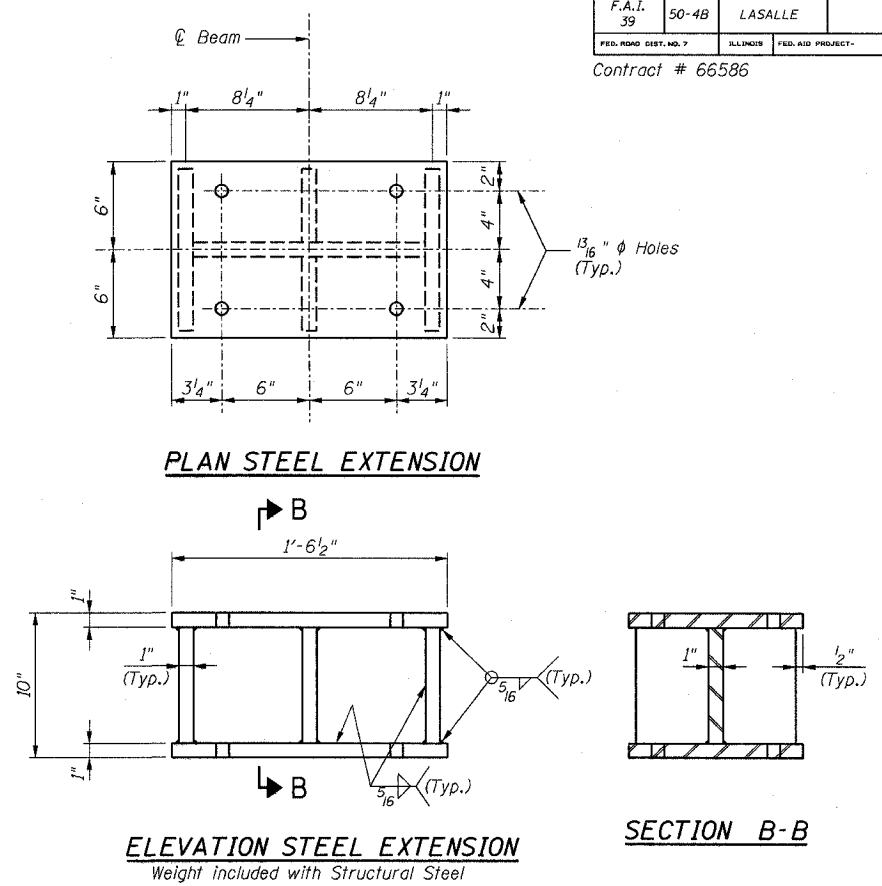
STATE OF ILLINOIS
DEPARTMENT OF TRANSPORTATION

| | | | | |
|---------------------------|------------------|---------------------------|--------------|-----------------------------|
| ROUTE NO. F.A.I. 39 | SECTION 50-4B | COUNTY LASALLE | SHEET 238 | SHEET NO. 213 313 SHEETS |
| FED. RD. DIST. NO. 7 | | ILLINOIS FED. AID PROJECT | | |

Contract # 66586



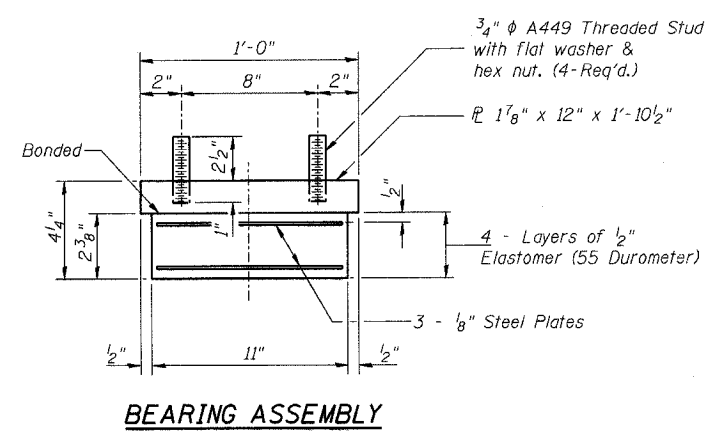
TYPE I ELASTOMERIC EXP. BRG.
(At N. Abut.)



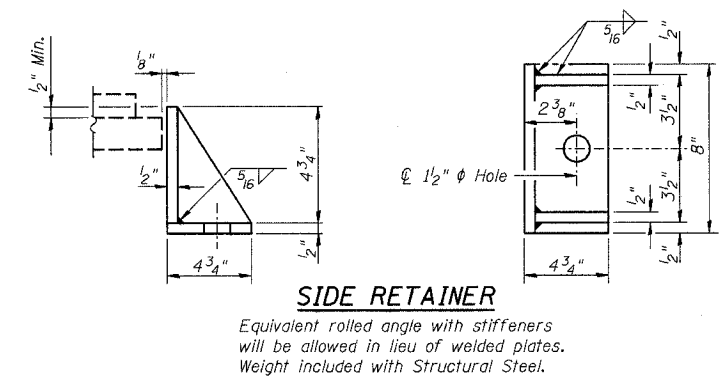
BILL OF MATERIAL

| Item | Unit | Total |
|-------------------------------------|------|-------|
| Elastomeric Bearing Assembly Type I | Each | 10 |

- NOTES:**
- For Bearing Locations see sheets 210 thru 212.
 - For Anchor Bolt Installation see sheet 216.



Note: Shim plates shall not be placed under Bearing Assembly.



| | |
|------------|-----|
| DESIGNED - | LRB |
| CHECKED - | AJK |
| DRAWN - | RMG |
| CHECKED - | LRB |

benesch
alfred benesch & company
Engineers - Surveyors - Planners
205 North Michigan Avenue, Suite 2400
Chicago, Illinois 60601
312-565-0450
Job # 3856

ELASTOMERIC BEARING TYPE I DETAILS
ABRAHAM LINCOLN MEMORIAL BRIDGE OVER
THE ILLINOIS RIVER (PUBLIC WATERS)
F.A.I. ROUTE 39 SEC. (50-4B) BR
LASALLE COUNTY
STATION 863+16.00
STRUCTURE NO. 050-0191 (SB & NB)

x:\3800s\3856\structures\abe lincoln memorial\final\plans\VL_brgdfl1.sht 9:05:44 AM 8/30/2006