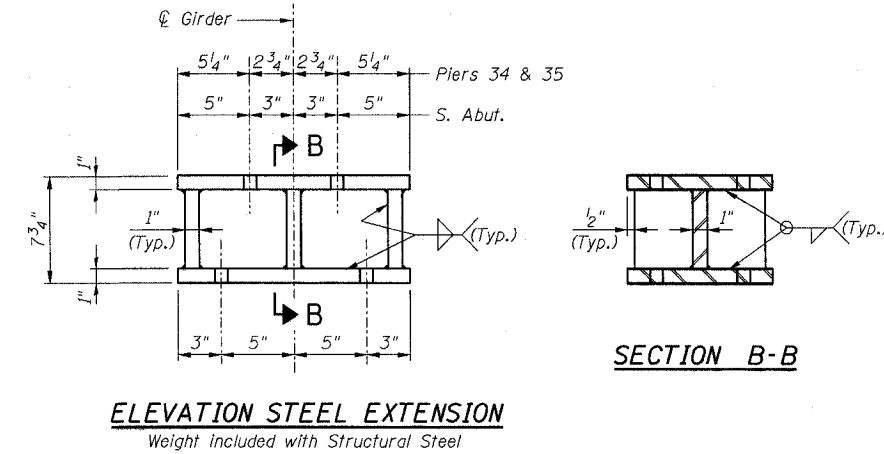
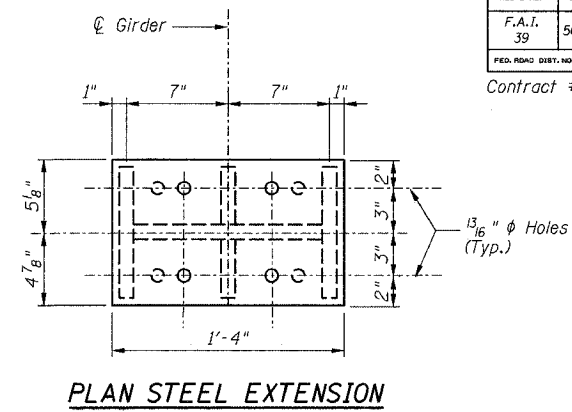
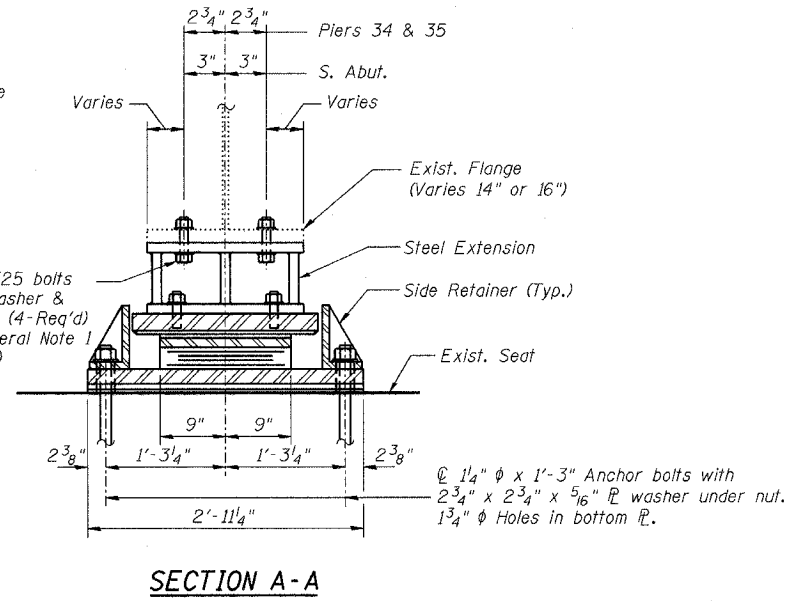
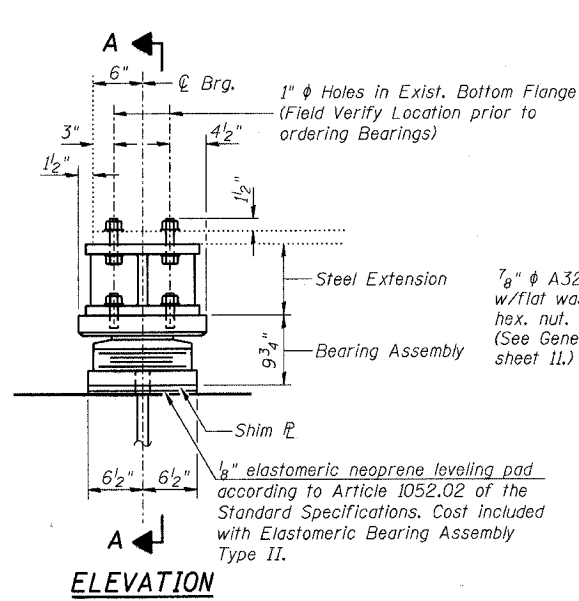


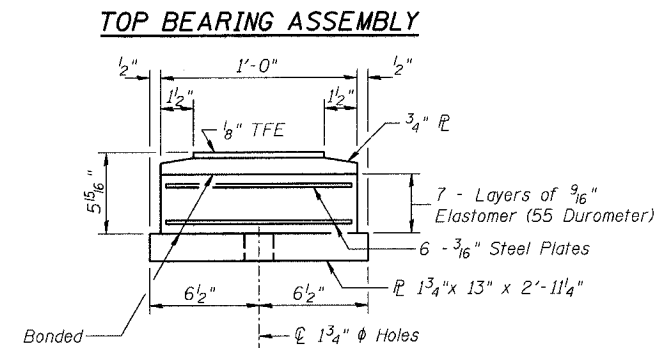
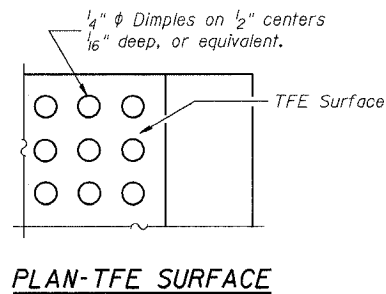
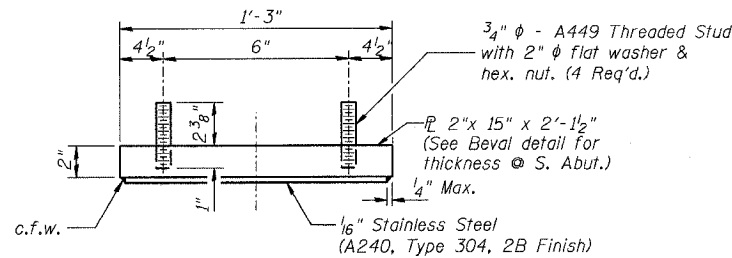
STATE OF ILLINOIS
DEPARTMENT OF TRANSPORTATION

ROUTE NO. F.A.I. 39	SECTION 50-4B	COUNTY LASALLE	SHEET 239	POST 239
FED. ROAD DIST. NO. 7		ALLIANCE	FED. AID PROJECT-	

SHEET NO. 214
313 SHEETS
Contract # 66586

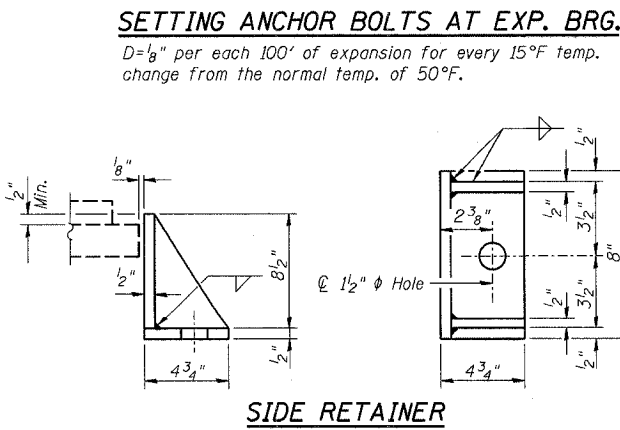
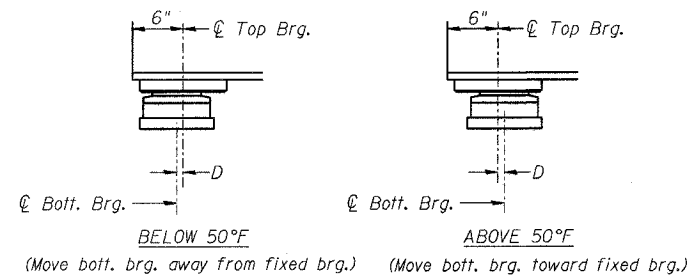
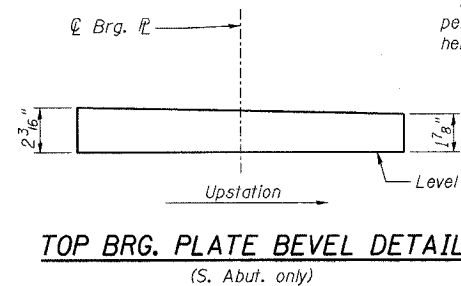


TYPE II-A ELASTOMERIC EXP. BRG.
(Pier 34 - Span 34, Pier 35 - Span 36 & S. Abut.)



Note: The $1/8$ " TFE sheet shall be bonded directly to the top steel plate with a two-component, medium viscosity epoxy resin, conforming to the requirements of the Federal Specification MMM-A-134, Type I. The bond agent shall be applied on the full area of the contact surfaces.

Bonding of $1/8$ " TFE sheet during vulcanizing process will be permitted provided the process and method of adjusting assembly height is approved by the Engineer.



- NOTES:**
- For Bearing Locations see sheets 210 thru 212.
 - For Anchor Bolt Installation see sheet 216.

BILL OF MATERIAL

Item	Unit	Total
Elastomeric Bearing Assembly Type II	Each	30

ELASTOMERIC BEARING TYPE II DETAILS
ABRAHAM LINCOLN MEMORIAL BRIDGE OVER
THE ILLINOIS RIVER (PUBLIC WATERS)
F.A.I. ROUTE 39 SEC. (50-4B) BR
LASALLE COUNTY
STATION 863+16.00
STRUCTURE NO. 050-0191 (SB & NB)

benesch

alfred benesch & company
Engineers - Surveyors - Planners
205 North Michigan Avenue, Suite 2400
Chicago, Illinois 60601
312-565-0450
Job # 3856

X:\3800s\3856\Structures\Abe Lincoln Memorial\Final\Plans\A.L._brgdt12a.sht

3:45:15 PM

8/30/2006

DESIGNED -	LRB
CHECKED -	AJK
DRAWN -	AR
CHECKED -	LRB