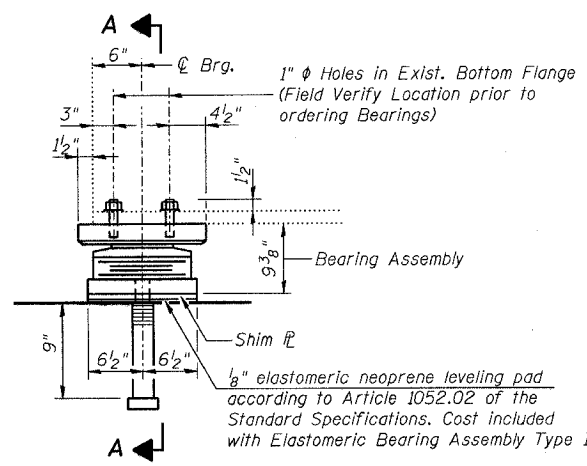


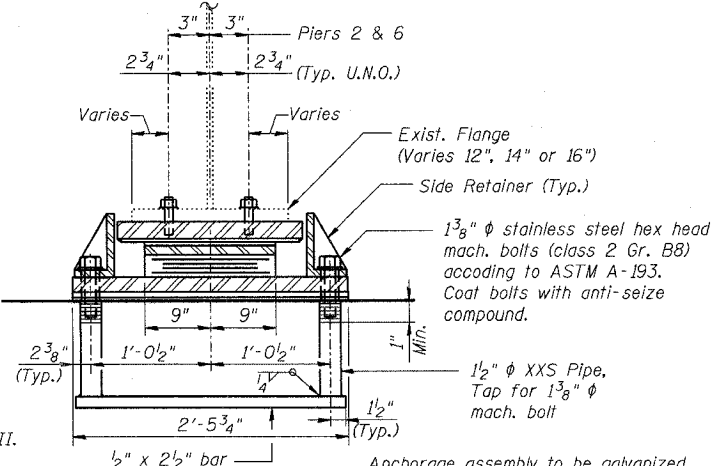
STATE OF ILLINOIS
DEPARTMENT OF TRANSPORTATION

ROUTE NO. F.A.I. 39	SECTION 50-4B	COUNTY LASALLE	SHEET 240	SHEET NO. 215 313 SHEETS
FED. ROAD DIST. NO. 7		ILLINOIS FED. AID PROJECT		

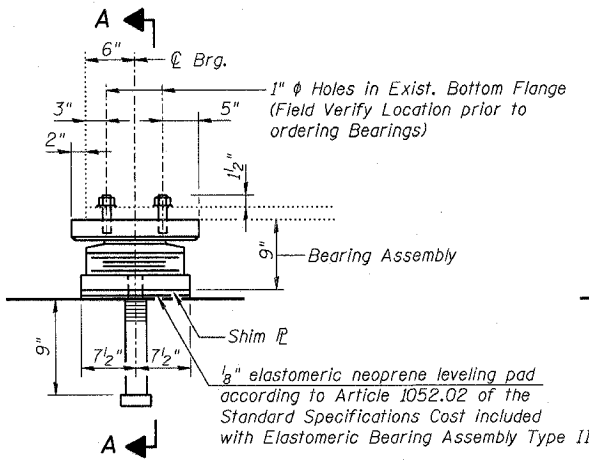
Contract # 66586



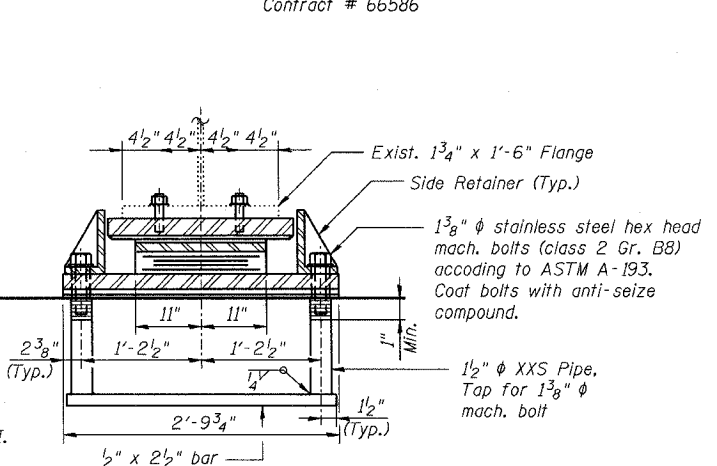
ELEVATION



SECTION A-A



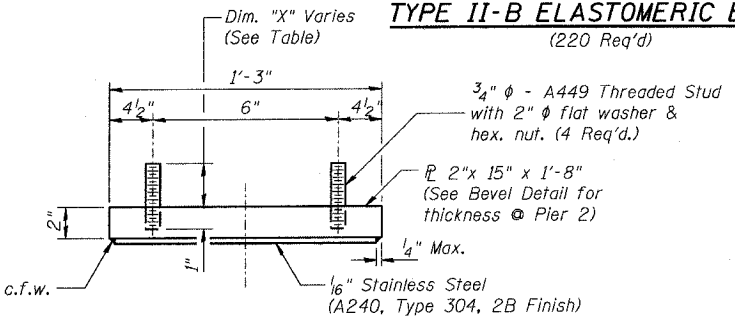
ELEVATION



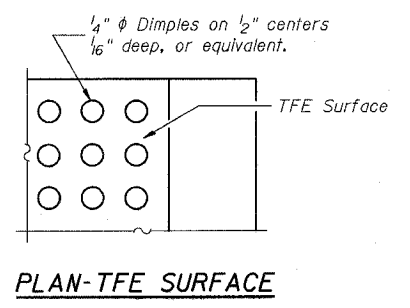
SECTION A-A

TYPE II-B ELASTOMERIC EXP. BRG.
(220 Req'd)

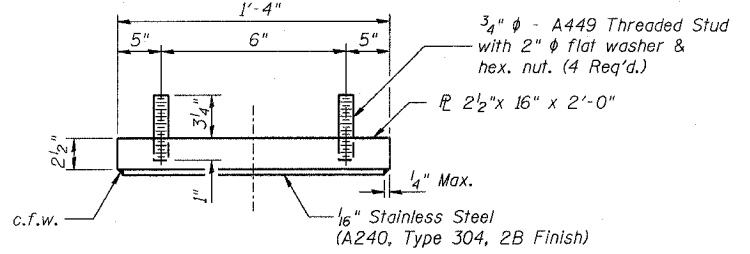
TYPE II-C ELASTOMERIC EXP. BRG.
(Pier 43 - Span 43, 10 Req'd)



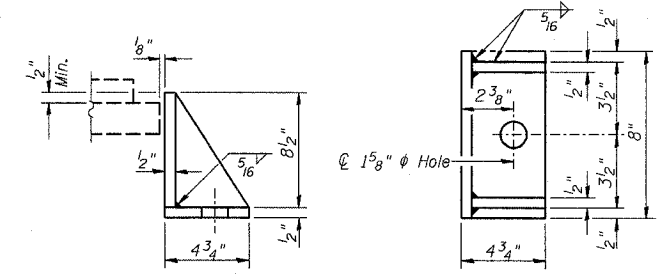
TOP BEARING ASSEMBLY



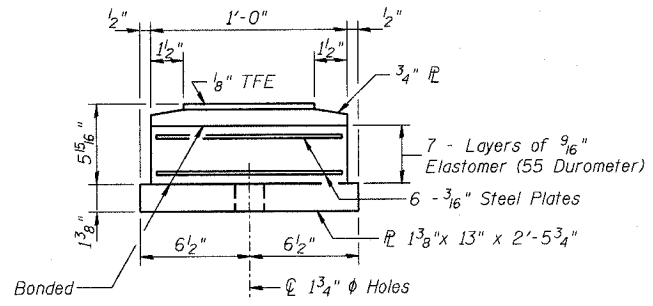
PLAN-TFE SURFACE



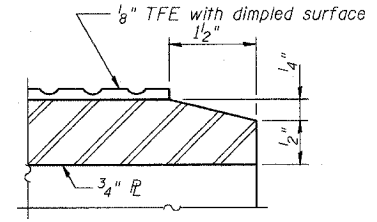
TOP BEARING ASSEMBLY



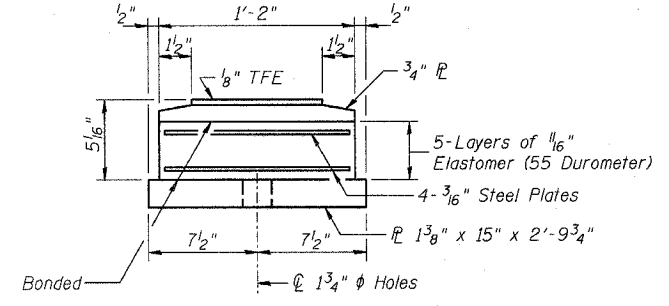
SIDE RETAINER



BOTTOM BEARING ASSEMBLY



SECTION THRU TFE



BOTTOM BEARING ASSEMBLY

Equivalent rolled angle with stiffeners will be allowed in lieu of welded plates. Weight included with Structural Steel.

- NOTES:**
1. U.N.O. denotes Unless Noted Otherwise.
 2. For Bearing Locations see sheets 210 thru 212.
 3. For Anchor Bolt Installation see sheet 216.

BILL OF MATERIAL

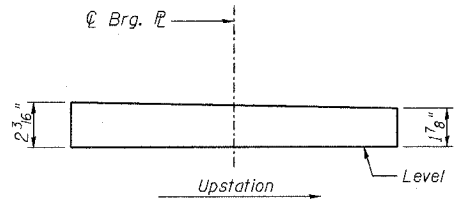
Item	Unit	Total
Elastomeric Bearing Assembly Type II	Each	230

X	Location of studs
2 3/8"	Typical all bearings (except as noted below)
2 1/2"	Pier 41 (Span 42 - Girder G4)
2 5/8"	Pier 41 (Span 42 - Girders G8, G9 & G10)
2 7/8"	Pier 41 (Span 42 - Girders G5, G6 & G7)

DESIGNED -	LRB
CHECKED -	AJK
DRAWN -	RMG
CHECKED -	LRB

Note: The 1/8" TFE sheet shall be bonded directly to the top steel plate with a two-component, medium viscosity epoxy resin, conforming to the requirements of the Federal Specification MMM-A-134, Type I. The bond agent shall be applied on the full area of the contact surfaces.

Bonding of 1/8" TFE sheet during vulcanizing process will be permitted provided the process and method of adjusting assembly height is approved by the Engineer.



TOP BRG. PLATE BEVEL DETAIL
(Pier 2 only)

**ELASTOMERIC BEARING TYPE II DETAILS
ABRAHAM LINCOLN MEMORIAL BRIDGE OVER
THE ILLINOIS RIVER (PUBLIC WATERS)**

F.A.I. ROUTE 39 SEC. (50-4B) BR
LASALLE COUNTY
STATION 863+16.00
STRUCTURE NO. 050-0191 (SB & NB)

benesch

alfred benesch & company
Engineers - Surveyors - Planners
205 North Michigan Avenue, Suite 2400
Chicago, Illinois 60601
312-965-0450
Job # 3856

8/30/2006 9:05:49 AM x:\38000s\3856\structures\abe lincoln memorial final\plans\AL_brgdft13.sht