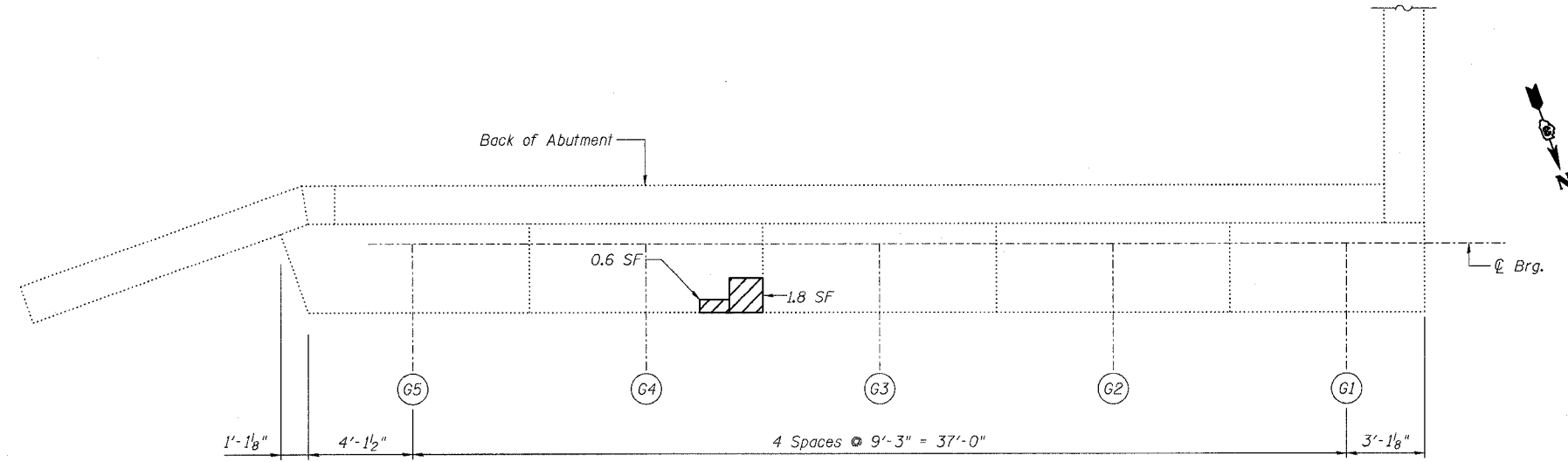


STATE OF ILLINOIS
DEPARTMENT OF TRANSPORTATION

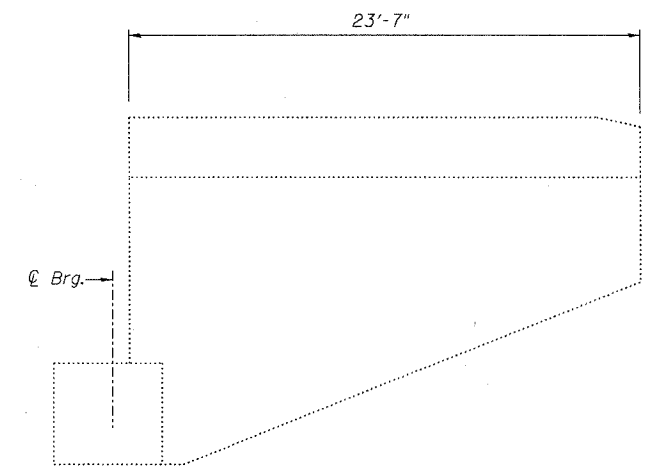
ROUTE NO.	SECTION	COUNTY	SHEET NO.	TOTAL SHEETS
F.A.I. 39	50-4B	LASALLE	219	313
FED. ROAD DIST. NO. 7	ILLINOIS	FED. AID PROJECT		

SHEET NO. 219
313 SHEETS

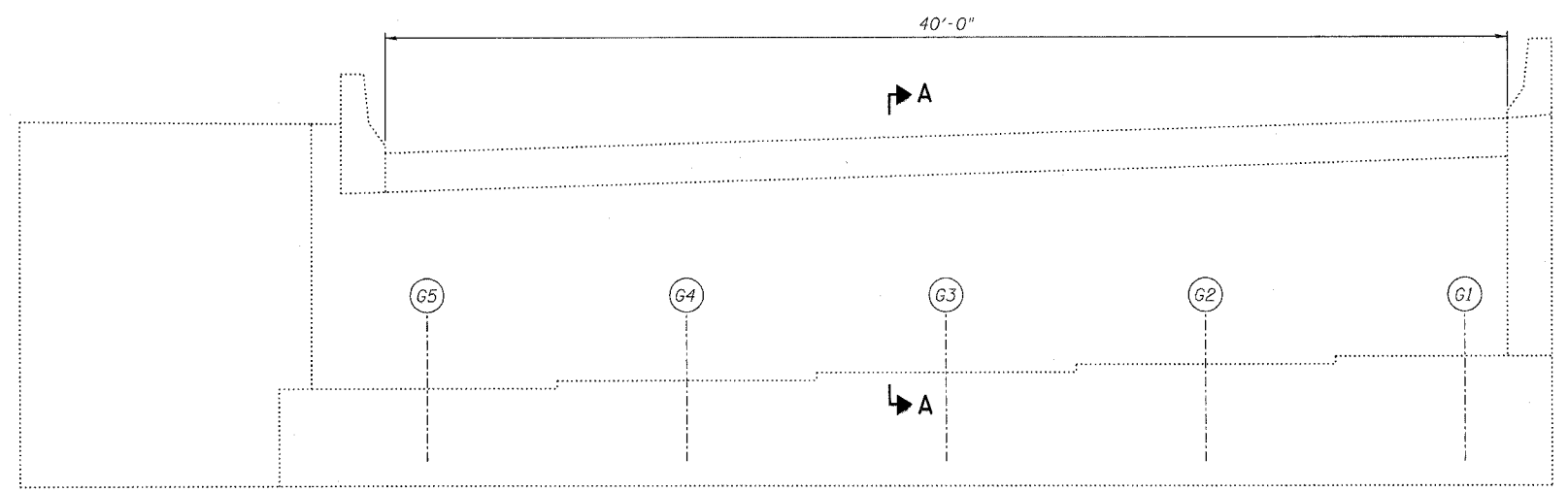
Contract # 66586



PLAN VIEW



SOUTHWEST WINGWALL



SOUTHBOUND ELEVATION
(Looking South)

NOTE:

The quantities shown are for estimating purposes only. The area to be repaired will be determined by the Engineer at the time of construction. Actual repair locations shall be shown on the as-built plans.

CONCRETE REPAIR - SOUTH ABUT. (SB)
ABRAHAM LINCOLN MEMORIAL BRIDGE OVER
THE ILLINOIS RIVER (PUBLIC WATERS)
F.A.I. ROUTE 39 SEC. (50-4B) BR
LASALLE COUNTY
STATION 863+16.00
STRUCTURE NO. 050-0191 (SB & NB)

LEGEND

- Structural Repair of Concrete (Depth equal to or less than 5")
- SF Square Feet

BILL OF MATERIAL

ITEM	UNIT	QUANTITY
Structural Repair of Concrete (Depth equal to or less than 5")	SF	2.4

DESIGNED	JGY
CHECKED	MTH
DRAWN	ADB
CHECKED	MTH

LIN ENGINEERING, LTD.
210 W. Chestnut
Chattanooga, Illinois 62629
(217) 483-4158
FAX (217) 483-4706

benesch
alfred benesch & company
Engineers • Surveyors • Planners
205 North Michigan Avenue, Suite 2400
Chicago, Illinois 60601
312-565-0450
Job # 3856

x:\3800s\3856\structures\abe lincoln memorial\final\plans\From_Lin\Abutment Repair & Removal\Southabutment-SB.sht 8/30/2006 10:07:24 AM