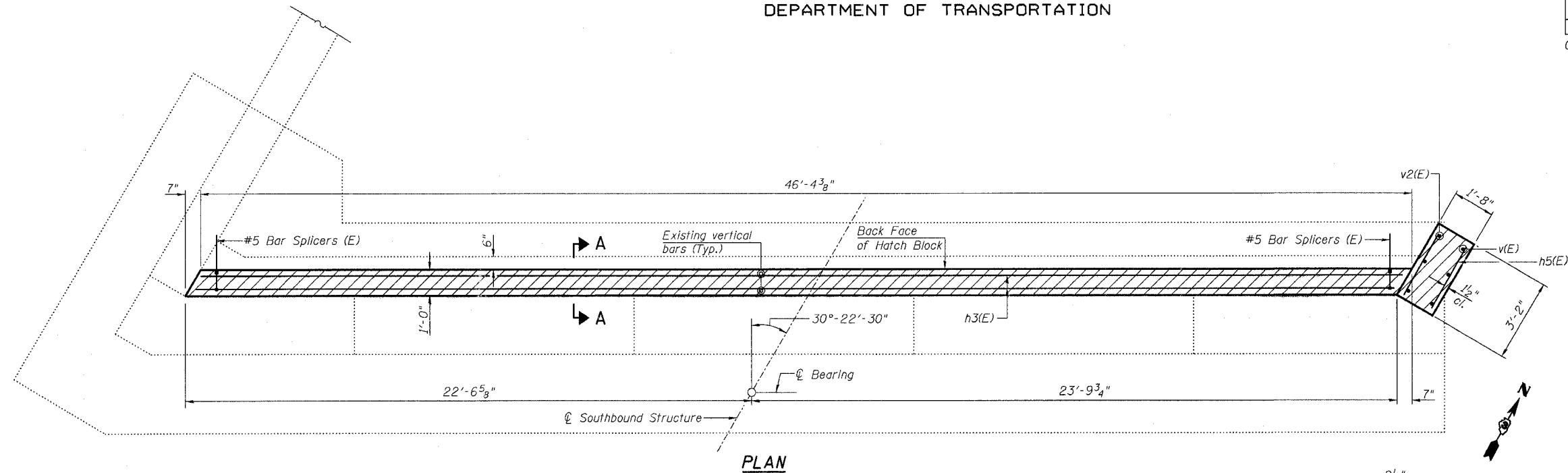


STATE OF ILLINOIS  
DEPARTMENT OF TRANSPORTATION

ROUTE NO.	SECTION	COUNTY	SHEETS	SHEET	SHEET NO. 224
F.A.I. 39	50-4B	LASALLE		211	313 SHEETS
FED. ROAD DIST. NO. 7	ILLINOIS	FED. AID PROJECT-			

Contract # 66586

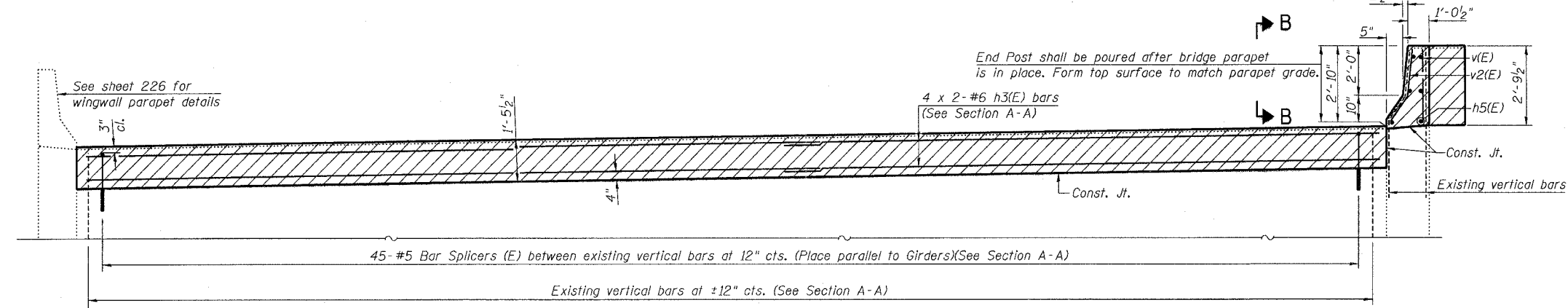


PLAN

ABUTMENT  
BILL OF MATERIAL

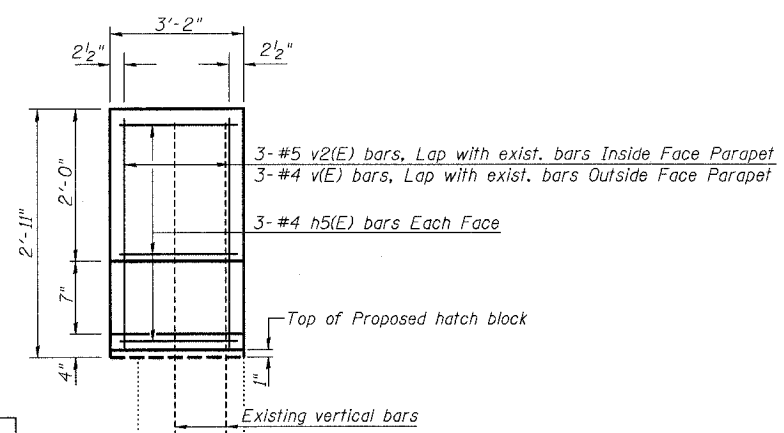
Bar	No.	Size	Length	Shape
h3(E)	8	#6	24'-4"	—
h5(E)	6	#4	2'-11"	—
v(E)	3	#4	2'-6"	—
v2(E)	3	#5	2'-8"	—
Concrete Superstructure			Cu. Yd.	5.2
Reinforcement Bars, Epoxy Coated			Pound	320

Reinforcement Bars designated (E) shall be epoxy coated.

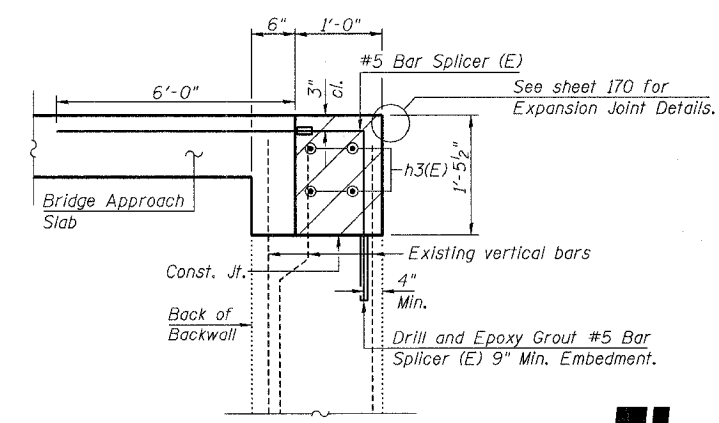


ELEVATION  
(Looking North)

MIN. BAR LAP  
#6 = 2'-7"



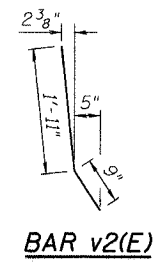
VIEW B-B



SECTION A-A

NOTES:

- Existing reinforcement shall be cleaned, straightened and incorporated into the new concrete, in accordance with IDOT Standard Specifications Article 501.03. Cost included in "Concrete Removal".
- See Sheet 217 for bar splicer details.
- Hatched area to be poured after superstructure false work has been removed.
- Bars indicated thus 4 x 2-#6 etc. indicates 4 lines of bars with 2 lengths per line.



DESIGNED	ADB
CHECKED	STD
DRAWN	ADB
CHECKED	MTH

**LIN ENGINEERING, LTD.**  
210 W. Chestnut  
Chatham, Illinois 62629  
(217) 483-4168  
FAX (217) 483-4706

**benesch**  
alfred benesch & company  
Engineers - Surveyors - Planners  
205 North Michigan Avenue, Suite 2400  
Chicago, Illinois 60601  
312-565-0450  
Job # 3856

**BACKWALL REHAB. - NORTH ABUT. (SB)**  
**ABRAHAM LINCOLN BRIDGE OVER**  
**THE ILLINOIS RIVER (PUBLIC WATERS)**  
F.A.I. ROUTE 39 SEC. (50-4B) BR  
LASALLE COUNTY  
STATION 863+16.00  
STRUCTURE NO. 050-0191 (SB & NB)

8/30/2006 10:07:43 AM x:\3800s\3856\structures\abe lincoln memorial\final\plans\From\_Lin\Wingwalls-Parapets-NorthAbut--SB-hatchblock.sht