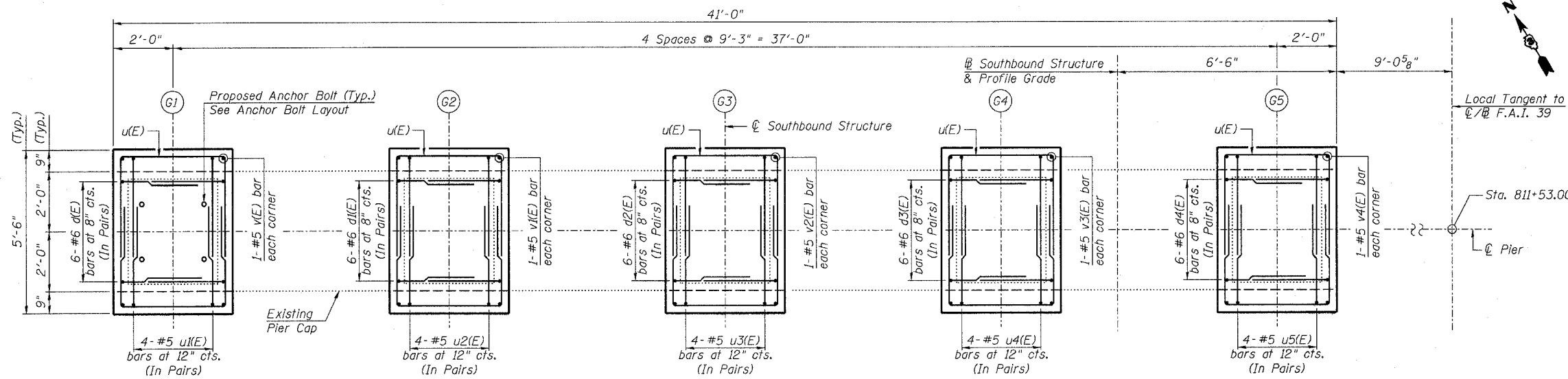


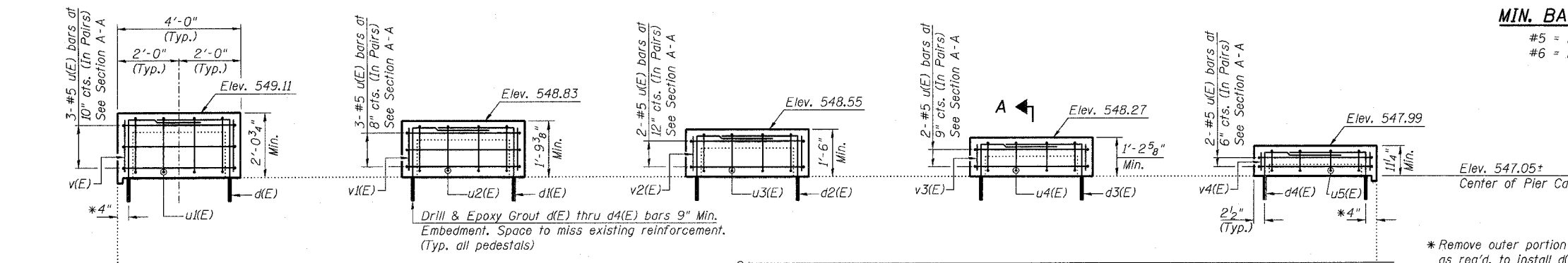
STATE OF ILLINOIS
DEPARTMENT OF TRANSPORTATION

ROUTE NO. F.A.I. 39	SECTION 50-4B	COUNTY LASALLE	TOTAL SHEETS 253	SHEET 253	SHEET NO. 230
FED. ROAD DIST. NO. 7		ILLINOIS	FED. AID PROJECT		

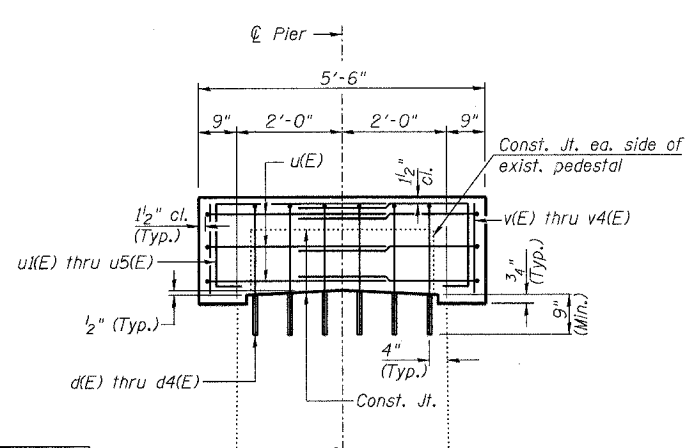
Contract # 66586



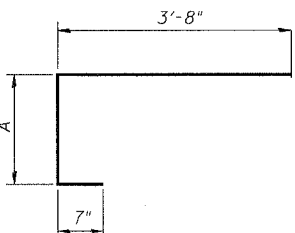
TOP PLAN OF PIER



ELEVATION
(Looking North)

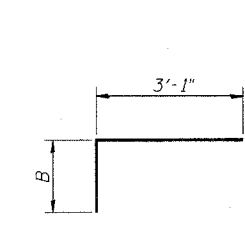


SECTION A-A



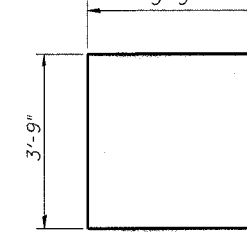
BARS u(E) thru u5(E)

Bar	A
u1(E)	1'-10"
u2(E)	1'-6"
u3(E)	1'-3"
u4(E)	1'-0"
u5(E)	8"



BARS d(E) thru d4(E)

Bar	B
d1(E)	2'-8"
d2(E)	2'-5"
d3(E)	2'-2"
d4(E)	1'-10"
d4(E)	1'-7"

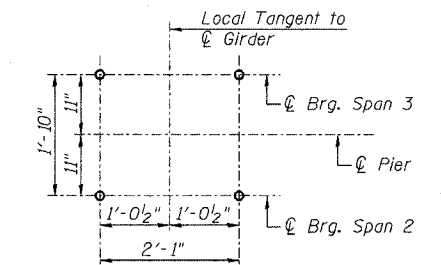


BAR u(E)

MIN. BAR LAP

#5 = 2'-2"
#6 = 2'-7"

DESIGNED - DLS
CHECKED - STD
DRAWN - SGL
CHECKED - MTH



ANCHOR BOLT LAYOUT
(Typ. each pedestal)

PIER 2 SB
BILL OF MATERIAL

Bar	No.	Size	Length	Shape
d1(E)	12	#6	5'-9"	└┘
d1(E)	12	#6	5'-6"	└┘
d2(E)	12	#6	5'-3"	└┘
d3(E)	12	#6	4'-11"	└┘
d4(E)	12	#6	4'-8"	└┘
u1(E)	24	#5	11'-3"	▬
u1(E)	8	#5	6'-1"	▬
u2(E)	8	#5	5'-9"	▬
u3(E)	8	#5	5'-6"	▬
u4(E)	8	#5	5'-3"	▬
u5(E)	8	#5	4'-11"	▬
v1(E)	4	#5	1'-10"	▬
v1(E)	4	#5	1'-7"	▬
v2(E)	4	#5	1'-4"	▬
v3(E)	4	#5	1'-0"	▬
v4(E)	4	#5	0'-9"	▬
Concrete Structures	Cu. Yd.	5.2		
Reinforcement Bars, Epoxy Coated	Pound	1010		
Bridge Seat Sealer	Sq. Ft.	374		
Concrete Removal	Cu. Yd.	0.7		

Reinforcement Bars designated (E) shall be epoxy coated.

NOTES:

1. Prior to ordering any material, the Contractor shall verify in the field all bearing height and shim thickness dimensions.
2. Space pedestal reinforcement to miss proposed anchor bolts.
3. See Sheet 19 for removal details.
4. See Sheet 215 for bearing details.

PEDESTAL REHAB. - PIER 2 SB
ABRAHAM LINCOLN BRIDGE OVER
THE ILLINOIS RIVER (PUBLIC WATERS)
F.A.I. ROUTE 39 SEC. (50-4B) BR
LASALLE COUNTY
STATION 863+16.00
STRUCTURE NO. 050-0191 (SB & NB)

LIN ENGINEERING, LTD.
210 W. Chestnut
Chatham, Illinois 62629
(217) 483-4168
FAX (217) 483-4106

benesch
alfred benesch & company
Engineers - Surveyors - Planners
205 North Michigan Avenue, Suite 2400
Chicago, Illinois 60601
312-565-0450
Job # 3856

x:\3800s\structures\abe lincoln memorial\final\plans\From.Lin\Pedestals\Ped.P25B.sht

10:07:00 AM

8/30/2006