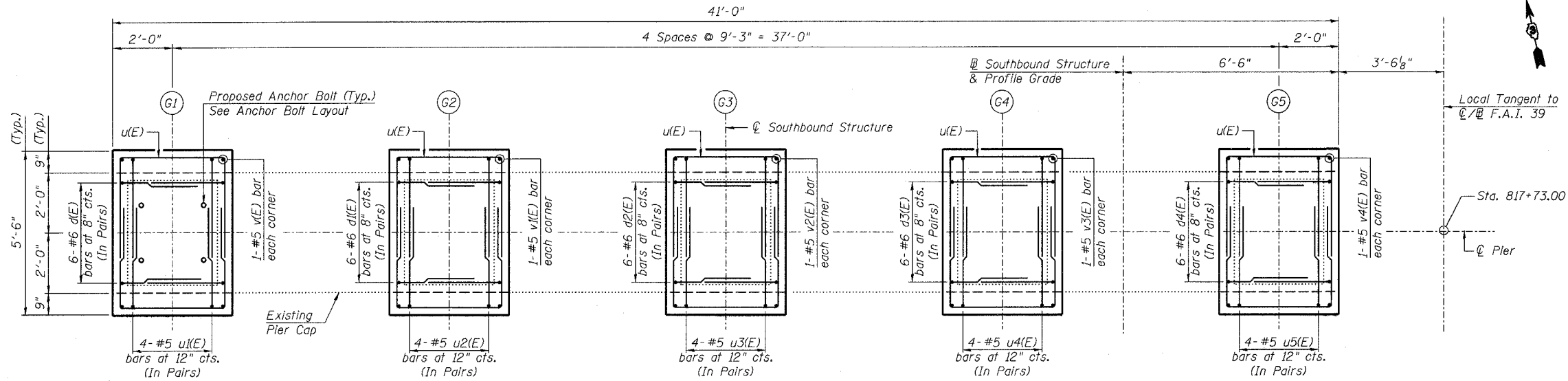


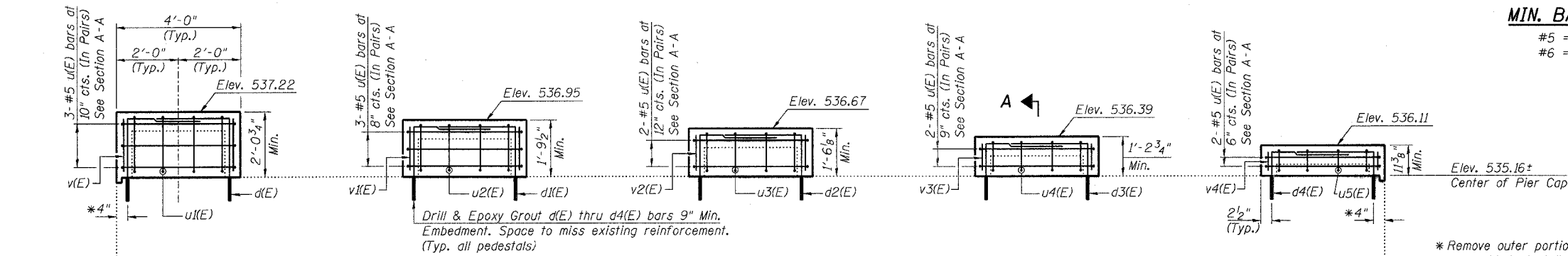
STATE OF ILLINOIS  
DEPARTMENT OF TRANSPORTATION

|                           |                  |                   |                     |                  |
|---------------------------|------------------|-------------------|---------------------|------------------|
| ROUTE NO.<br>F.A.I.<br>39 | SECTION<br>50-4B | COUNTY<br>LASALLE | TOTAL SHEETS<br>313 | SHEET NO.<br>239 |
| FED. ROAD DIST. NO. 7     |                  | ILLINOIS          | FED. AID PROJECT    |                  |

Contract # 66586

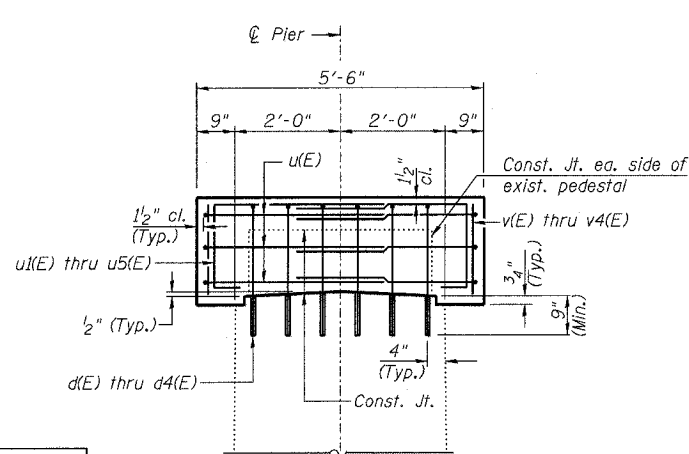


TOP PLAN OF PIER

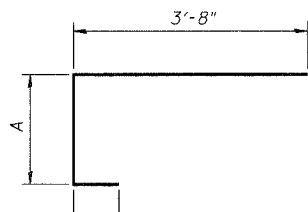


ELEVATION  
(Looking North)

MIN. BAR LAP  
#5 = 2'-2"  
#6 = 2'-7"

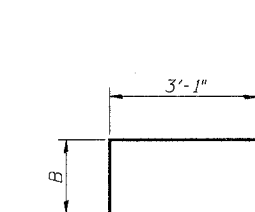


SECTION A-A



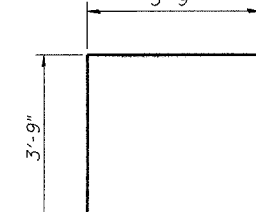
BARS u1(E) thru u5(E)

| Bar   | A      |
|-------|--------|
| u1(E) | 1'-10" |
| u2(E) | 1'-6"  |
| u3(E) | 1'-3"  |
| u4(E) | 1'-0"  |
| u5(E) | 8"     |



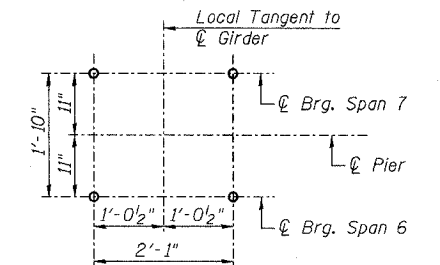
BARS d1(E) thru d4(E)

| Bar   | B      |
|-------|--------|
| d1(E) | 2'-8"  |
| d2(E) | 2'-5"  |
| d3(E) | 2'-2"  |
| d4(E) | 1'-10" |



BAR u(E)

|                |
|----------------|
| DESIGNED - DLS |
| CHECKED - STD  |
| DRAWN - SGL    |
| CHECKED - MTH  |



ANCHOR BOLT LAYOUT  
(Typ. each pedestal)

PIER 6 SB  
BILL OF MATERIAL

| Bar                              | No. | Size    | Length | Shape |
|----------------------------------|-----|---------|--------|-------|
| d1(E)                            | 12  | #6      | 5'-9"  | ┌     |
| d2(E)                            | 12  | #6      | 5'-6"  | ┌     |
| d3(E)                            | 12  | #6      | 4'-11" | ┌     |
| d4(E)                            | 12  | #6      | 4'-8"  | ┌     |
| u1(E)                            | 24  | #5      | 11'-3" | ┌     |
| u2(E)                            | 8   | #5      | 6'-1"  | ┌     |
| u3(E)                            | 8   | #5      | 5'-9"  | ┌     |
| u4(E)                            | 8   | #5      | 5'-6"  | ┌     |
| u5(E)                            | 8   | #5      | 5'-3"  | ┌     |
| v1(E)                            | 4   | #5      | 1'-10" | —     |
| v2(E)                            | 4   | #5      | 1'-7"  | —     |
| v3(E)                            | 4   | #5      | 1'-4"  | —     |
| v4(E)                            | 4   | #5      | 0'-9"  | —     |
| Concrete Structures              |     | Cu. Yd. | 5.2    |       |
| Reinforcement Bars, Epoxy Coated |     | Pound   | 1010   |       |
| Bridge Seat Sealer               |     | Sq. Ft. | 375    |       |
| Concrete Removal                 |     | Cu. Yd. | 0.7    |       |

Reinforcement Bars designated (E) shall be epoxy coated.

NOTES:

1. Prior to ordering any material, the Contractor shall verify in the field all bearing height and shim thickness dimensions.
2. Space pedestal reinforcement to miss proposed anchor bolts.
3. See Sheet 19 for removal details.
4. See Sheet 215 for bearing details.

PEDESTAL REHAB. - PIER 6 SB  
ABRAHAM LINCOLN BRIDGE OVER  
THE ILLINOIS RIVER (PUBLIC WATERS)  
F.A.I. ROUTE 39 SEC. (50-4B) BR  
LASALLE COUNTY  
STATION 863+16.00  
STRUCTURE NO. 050-0191 (SB & NB)

LIN ENGINEERING, LTD.  
210 W. Chestnut  
Chatham, Illinois 62629  
(217) 483-4168  
FAX (217) 483-4106

benesch  
alfred benesch & company  
Engineers - Surveyors - Planners  
205 North Michigan Avenue, Suite 2400  
Chicago, Illinois 60601  
312-965-0450  
Job # 3856

x:\3800s\3856\structures\abe.lincoln\memorials\final\plans\From.Lin\Pedestals\Ped.P65B.sht

10:06:40 AM

8/30/2006