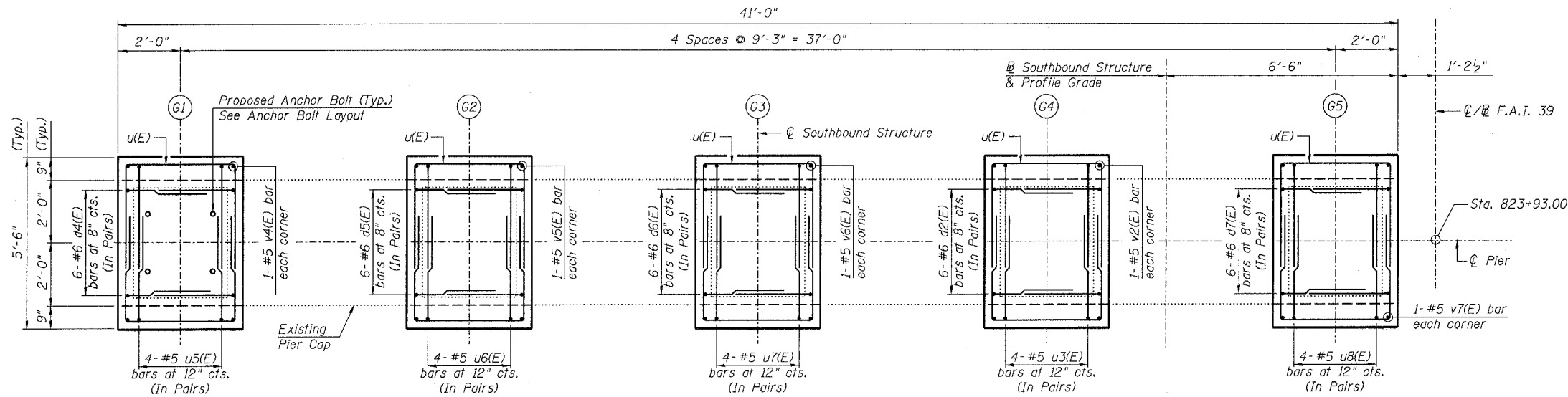


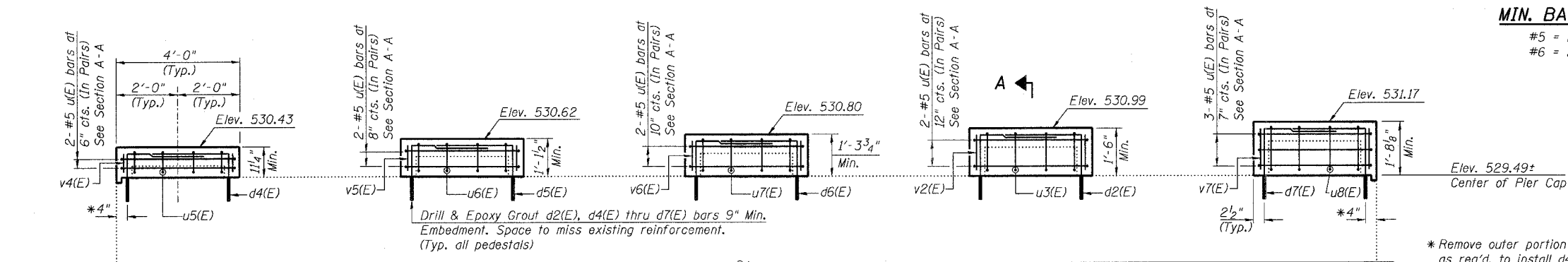
STATE OF ILLINOIS
DEPARTMENT OF TRANSPORTATION

ROUTE NO. F.A.I. 39	SECTION 50-4B	COUNTY LASALLE	SHEET 208	SHEET NO. 245
FED. ROAD DIST. NO. 7				ILLINOIS
FED. AID PROJECT				313 SHEETS

Contract # 66586

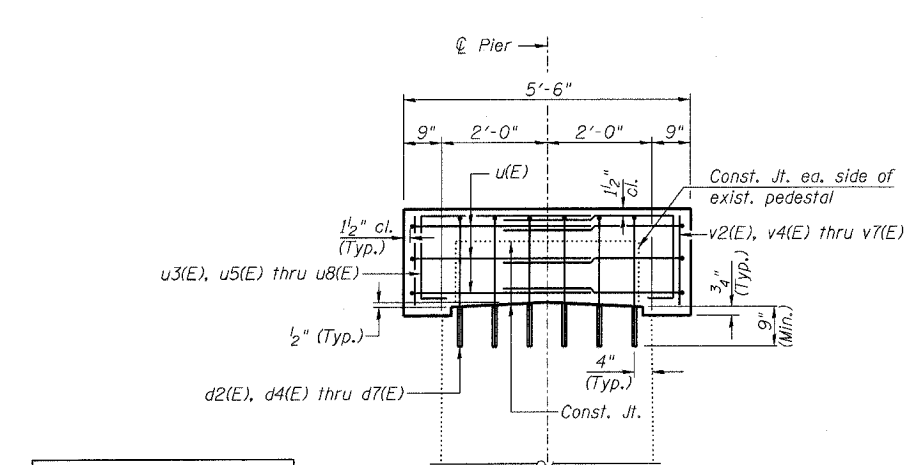


TOP PLAN OF PIER

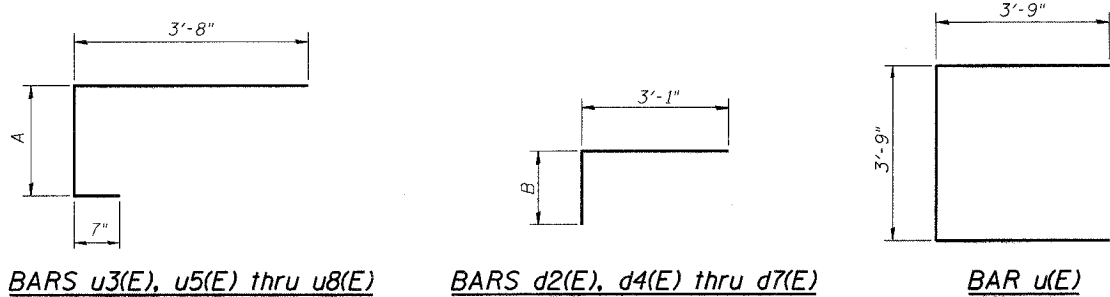


ELEVATION
(Looking North)

MIN. BAR LAP
#5 = 2'-2"
#6 = 2'-7"

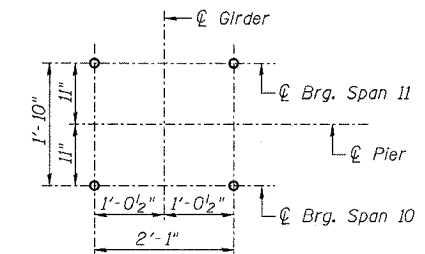


SECTION A-A



Bar	A
u3(E)	1'-3"
u5(E)	8"
u6(E)	11"
u7(E)	1'-1"
u8(E)	1'-5"

Bar	B
d2(E)	2'-2"
d4(E)	1'-7"
d5(E)	1'-9"
d6(E)	1'-11"
d7(E)	2'-4"



ANCHOR BOLT LAYOUT
(Typ. each pedestal)

PIER 10 SB
BILL OF MATERIAL

Bar	No.	Size	Length	Shape
d2(E)	12	#6	5'-3"	└
d4(E)	12	#6	4'-8"	└
d5(E)	12	#6	4'-10"	└
d6(E)	12	#6	5'-0"	└
d7(E)	12	#6	5'-5"	└
u(E)	22	#5	11'-3"	└
u3(E)	8	#5	5'-6"	└
u5(E)	8	#5	4'-11"	└
u6(E)	8	#5	5'-2"	└
u7(E)	8	#5	5'-4"	└
u8(E)	8	#5	5'-8"	└
v2(E)	4	#5	1'-4"	—
v4(E)	4	#5	0'-9"	—
v5(E)	4	#5	0'-11"	—
v6(E)	4	#5	1'-2"	—
v7(E)	4	#5	1'-6"	—
Concrete Structures		Cu. Yd.	4.8	
Reinforcement Bars, Epoxy Coated		Pound	960	
Bridge Seal Sealer		Sq. Ft.	356	
Concrete Removal		Cu. Yd.	0.7	

Reinforcement Bars designated (E) shall be epoxy coated.

NOTES:

- Prior to ordering any material, the Contractor shall verify in the field all bearing height and shim thickness dimensions.
- Space pedestal reinforcement to miss proposed anchor bolts.
- See Sheet 19 for removal details.
- See Sheet 215 for bearing details.

PEDESTAL REHAB. - PIER 10 SB
ABRAHAM LINCOLN BRIDGE OVER
THE ILLINOIS RIVER (PUBLIC WATERS)
F.A.I. ROUTE 39 SEC. (50-4B) BR
LASALLE COUNTY
STATION 863+16.00
STRUCTURE NO. 050-0191 (SB & NB)

LIN ENGINEERING, LTD.
210 W. Chestnut
Chatham, Illinois 62629
(217) 483-468
FAX (217) 483-4106

benesch
alfred benesch & company
Engineers • Surveyors • Planners
208 North Michigan Avenue, Suite 2400
Chicago, Illinois 60601
312-965-0450
Job # 3856

8/30/2006 10:05:58 AM x:\3800s\structures\abe lincoln memorial\final\plans\From_Lin_Pedestals\Ped_P10SB.sht