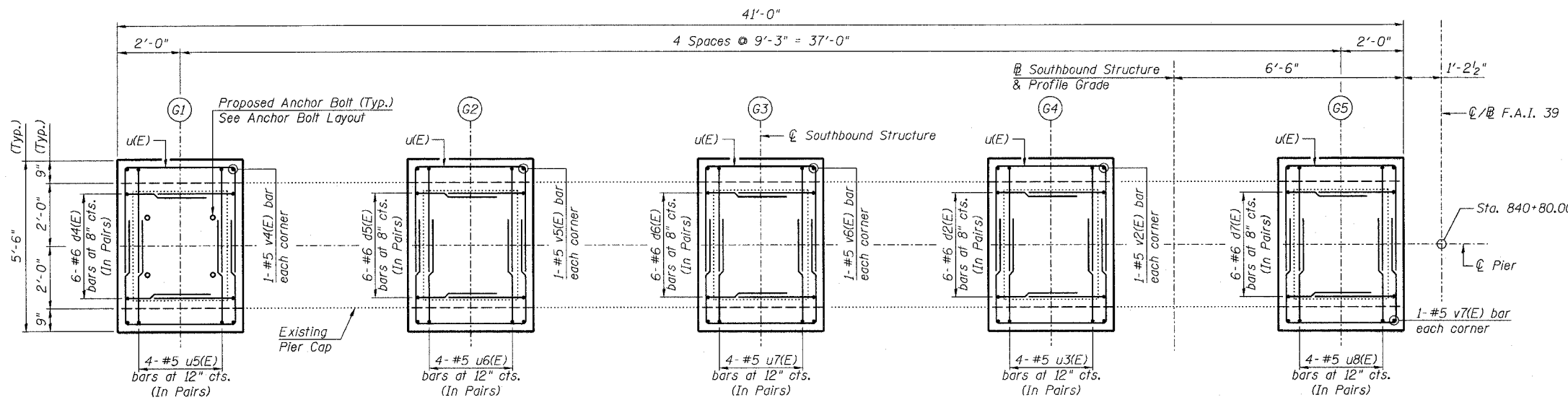


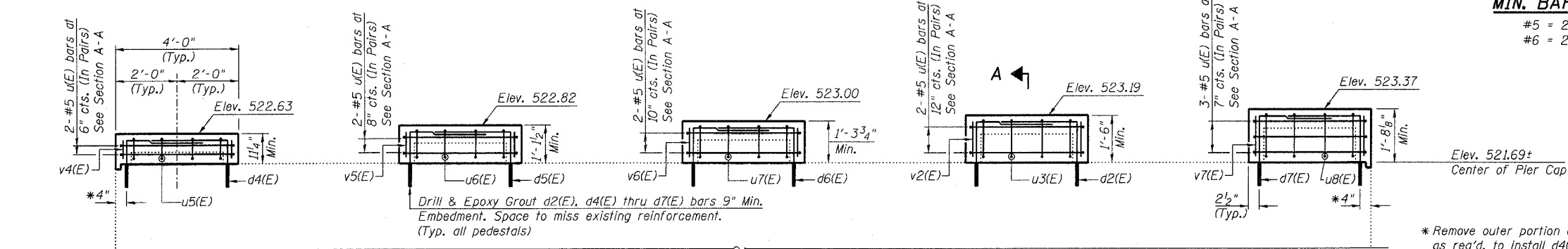
STATE OF ILLINOIS  
DEPARTMENT OF TRANSPORTATION

ROUTE NO.	SECTION	COUNTY	SHEET	SHEET NO.
F.A.I. 39	50-4B	LASALLE	29	269
FED. ROAD DIST. NO. 7	ILLINOIS	FED. AID PROJECT		313 SHEETS

Contract # 66586

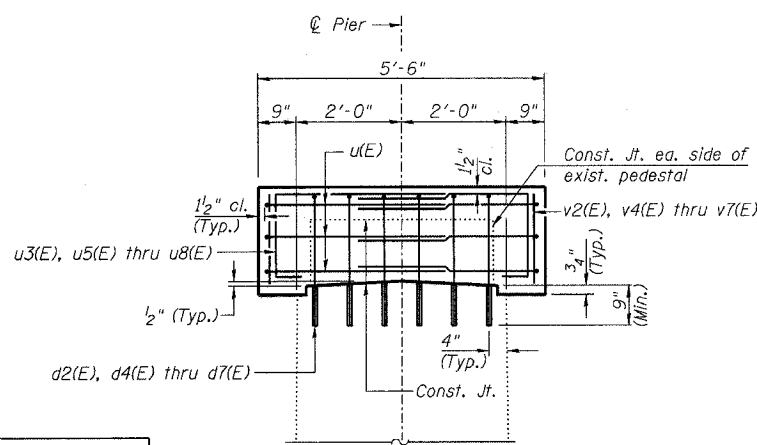


TOP PLAN OF PIER



ELEVATION  
(Looking North)

MIN. BAR LAP  
#5 = 2'-2"  
#6 = 2'-7"



SECTION A-A

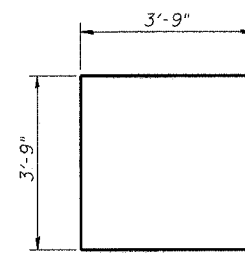
BARS u3(E), u5(E) thru u8(E)

Bar	A
u3(E)	1'-3"
u5(E)	8"
u6(E)	11"
u7(E)	1'-1"
u8(E)	1'-5"

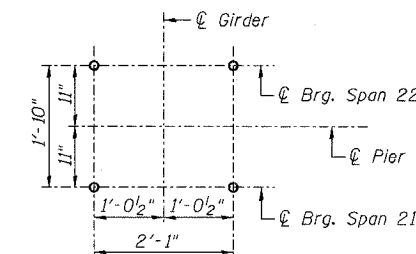
BARS d2(E), d4(E) thru d7(E)

Bar	B
d2(E)	2'-2"
d4(E)	1'-7"
d5(E)	1'-9"
d6(E)	1'-11"
d7(E)	2'-4"

BAR u(E)



DESIGNED - DLS
CHECKED - STD
DRAWN - SGL
CHECKED - MTH



ANCHOR BOLT LAYOUT  
(Typ. each pedestal)

PIER 21 SB  
BILL OF MATERIAL

Bar	No.	Size	Length	Shape
d2(E)	12	#6	5'-3"	┌
d4(E)	12	#6	4'-8"	┌
d5(E)	12	#6	4'-10"	┌
d6(E)	12	#6	5'-0"	┌
d7(E)	12	#6	5'-5"	┌
u(E)	22	#5	11'-3"	┌
u3(E)	8	#5	5'-6"	┌
u5(E)	8	#5	4'-11"	┌
u6(E)	8	#5	5'-2"	┌
u7(E)	8	#5	5'-4"	┌
u8(E)	8	#5	5'-8"	┌
v2(E)	4	#5	1'-4"	—
v4(E)	4	#5	0'-9"	—
v5(E)	4	#5	0'-11"	—
v6(E)	4	#5	1'-2"	—
v7(E)	4	#5	1'-6"	—
Concrete Structures		Cu. Yd.	4.8	
Reinforcement Bars, Epoxy Coated		Pound	960	
Bridge Seat Sealer		Sq. Ft.	356	
Concrete Removal		Cu. Yd.	0.7	

Reinforcement Bars designated (E) shall be epoxy coated.

NOTES:

- Prior to ordering any material, the Contractor shall verify in the field all bearing height and shim thickness dimensions.
- Space pedestal reinforcement to miss proposed anchor bolts.
- See Sheet 19 for removal details.
- See Sheet 215 for bearing details.

PEDESTAL REHAB. - PIER 21 SB  
ABRAHAM LINCOLN MEMORIAL BRIDGE OVER  
THE ILLINOIS RIVER (PUBLIC WATERS)  
F.A.I. ROUTE 39 SEC. (50-4B) BR  
LASALLE COUNTY  
STATION 863+16.00  
STRUCTURE NO. 050-0191 (SB & NB)

**LIN ENGINEERING, LTD.**  
210 W. Chestnut  
Chatham, Illinois 62629  
(217) 483-4868  
FAX (217) 483-4706

**benesch**  
alfred benesch & company  
Engineers • Surveyors • Planners  
205 North Michigan Avenue, Suite 2400  
Chicago, Illinois 60601  
312-565-0450  
Job # 3856

x:\3800s\3856\structures\abe lincoln\_memo\final\plans\From\_Lin\Pedestals\Ped\_P21SB.sht

8/30/2006 10:05:00 AM