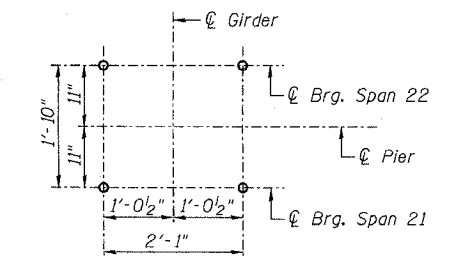


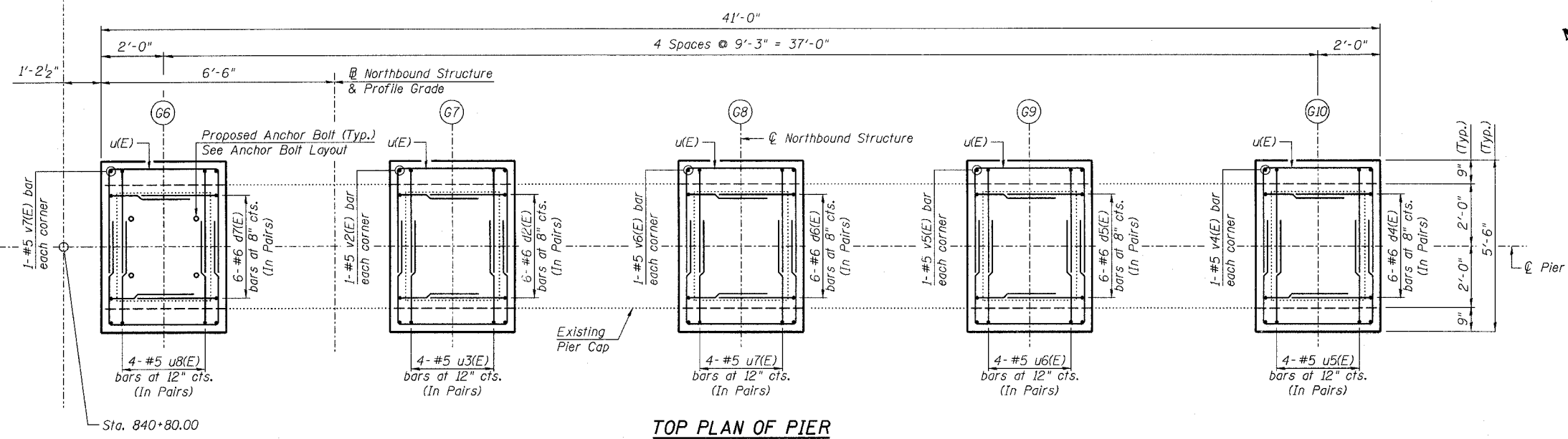
STATE OF ILLINOIS  
DEPARTMENT OF TRANSPORTATION

ROUTE NO. F.A.I. 39	SECTION 50-4B	COUNTY LASALLE	SHEET 293	SHEET NO. 270 313 SHEETS
FED. ROAD DIST. NO. 7		ILLINOIS FED. AID PROJECT-		

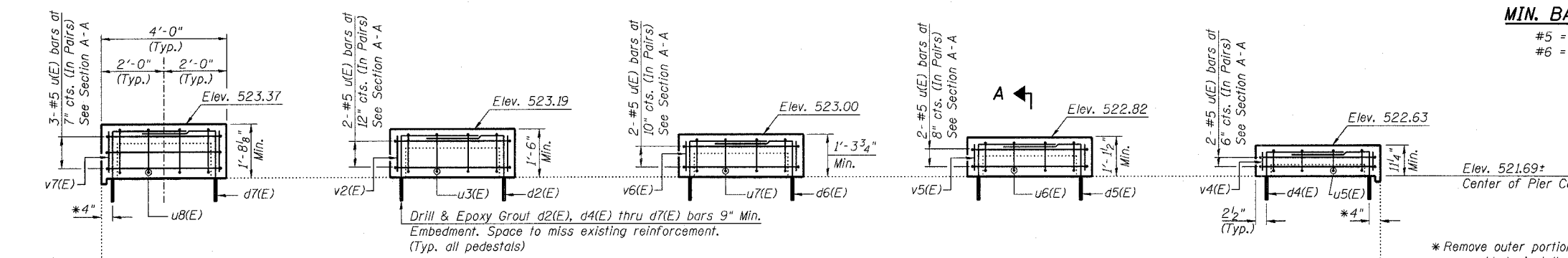
Contract # 66586



**ANCHOR BOLT LAYOUT**  
(Typ. each pedestal)



**TOP PLAN OF PIER**



**ELEVATION**  
(Looking North)

**MIN. BAR LAP**  
#5 = 2'-2"  
#6 = 2'-7"

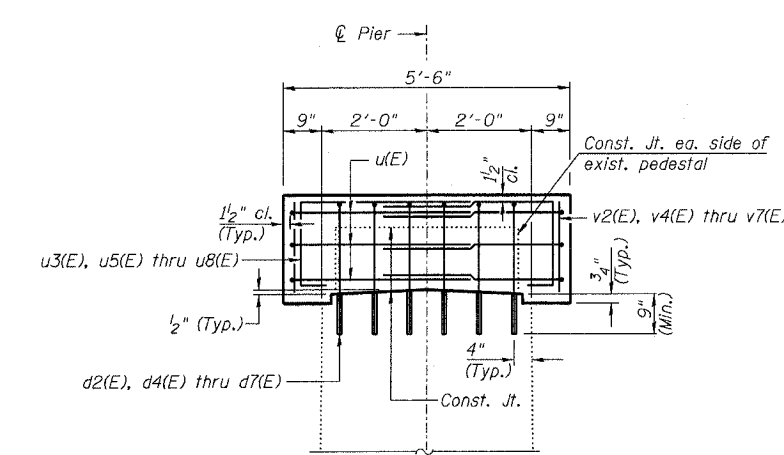
**PIER 21 NB  
BILL OF MATERIAL**

Bar	No.	Size	Length	Shape
d2(E)	12	#6	5'-3"	┌
d4(E)	12	#6	4'-8"	┌
d5(E)	12	#6	4'-10"	┌
d6(E)	12	#6	5'-0"	┌
d7(E)	12	#6	5'-5"	┌
u(E)	22	#5	11'-3"	┌
u3(E)	8	#5	5'-6"	┌
u5(E)	8	#5	4'-11"	┌
u6(E)	8	#5	5'-2"	┌
u7(E)	8	#5	5'-4"	┌
u8(E)	8	#5	5'-8"	┌
v2(E)	4	#5	1'-4"	—
v4(E)	4	#5	0'-9"	—
v5(E)	4	#5	0'-11"	—
v6(E)	4	#5	1'-2"	—
v7(E)	4	#5	1'-6"	—
Concrete Structures		Cu. Yd.	4.8	
Reinforcement Bars, Epoxy Coated		Pound	960	
Bridge Seat Sealer		Sq. Ft.	356	
Concrete Removal		Cu. Yd.	0.7	

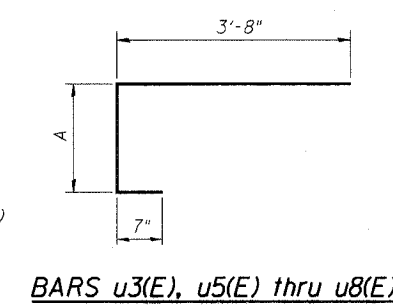
Reinforcement Bars designated (E) shall be epoxy coated.

**NOTES:**

1. Prior to ordering any material, the Contractor shall verify in the field all bearing height and shim thickness dimensions.
2. Space pedestal reinforcement to miss proposed anchor bolts.
3. See Sheet 19 for removal details.
4. See Sheet 215 for bearing details.

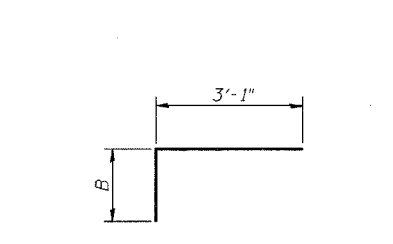


**SECTION A-A**



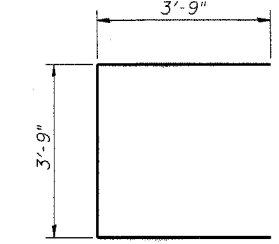
**BARS u3(E), u5(E) thru u8(E)**

Bar	A
u3(E)	1'-3"
u5(E)	8"
u6(E)	11"
u7(E)	1'-1"
u8(E)	1'-5"



**BARS d2(E), d4(E) thru d7(E)**

Bar	B
d2(E)	2'-2"
d4(E)	1'-7"
d5(E)	1'-9"
d6(E)	1'-11"
d7(E)	2'-4"



**BAR u(E)**

**PEDESTAL REHAB. - PIER 21 NB**  
**ABRAHAM LINCOLN MEMORIAL BRIDGE OVER**  
**THE ILLINOIS RIVER (PUBLIC WATERS)**  
**F.A.I. ROUTE 39 SEC. (50-4B) BR**  
**LASALLE COUNTY**  
**STATION 863+16.00**  
**STRUCTURE NO. 050-0191 (SB & NB)**

**LIN ENGINEERING, LTD.**  
210 W. Chestnut  
Chatham, Illinois 62629  
(217) 483-4688  
FAX (217) 483-4706

**benesch**  
alfred benesch & company  
Engineers • Surveyors • Planners  
205 North Michigan Avenue, Suite 2400  
Chicago, Illinois 60601  
312-965-0450  
Job # 3856

x:\3800s\3856\structures\from.Lin\Pedestals\Ped.P21NB.sht 10:04:57 AM 8/30/2006

DESIGNED - DLS
CHECKED - STD
DRAWN - SGL
CHECKED - MTH