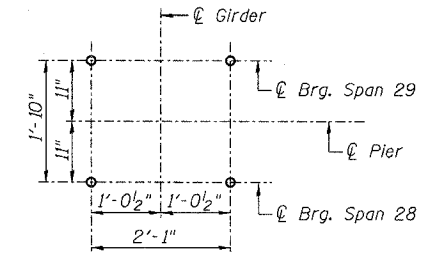


STATE OF ILLINOIS
DEPARTMENT OF TRANSPORTATION

ROUTE NO.	SECTION	COUNTY	SHEETS	SHEET	SHEET NO. 281
F.A.I. 39	50-4B	LASALLE	304	304	313 SHEETS
FED. ROAD DIST. NO. 7	ILLINOIS	FED. AID PROJECT-			

Contract # 66586



ANCHOR BOLT LAYOUT
(Typ. each pedestal)

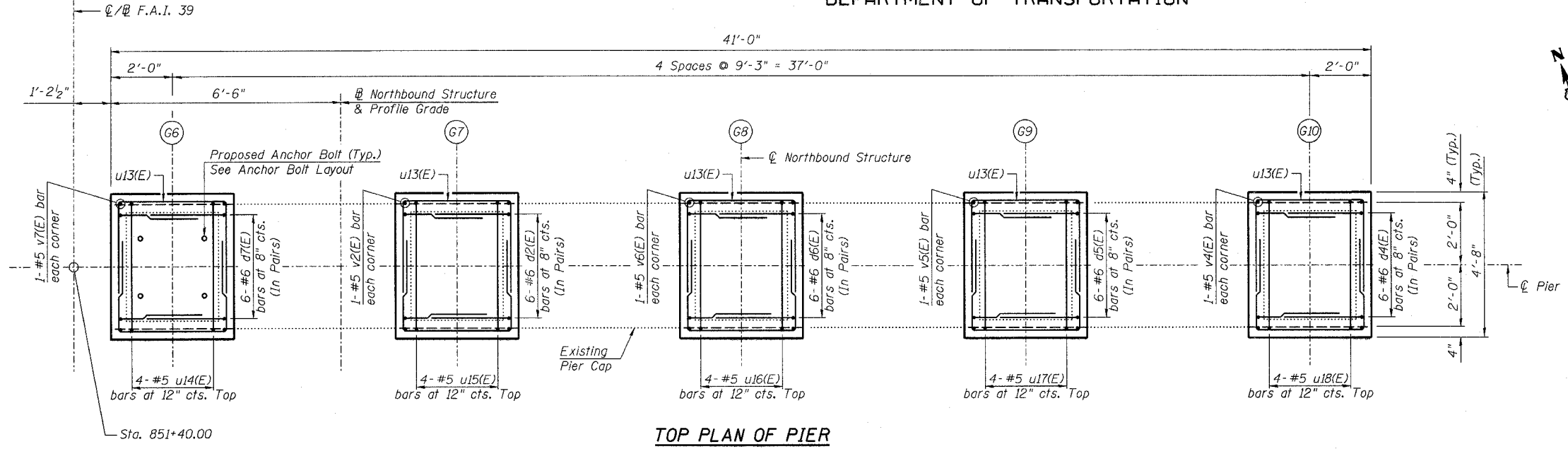
**PIER 28 NB
BILL OF MATERIAL**

Bar No.	Size	Length	Shape
d2(E)	#6	5'-3"	┌
d4(E)	#6	4'-8"	┌
d5(E)	#6	4'-10"	┌
d6(E)	#6	5'-0"	┌
d7(E)	#6	5'-5"	┌
u13(E)	#5	10'-5"	▬
u14(E)	#5	7'-1"	▬
u15(E)	#5	6'-9"	▬
u16(E)	#5	6'-5"	▬
u17(E)	#5	6'-1"	▬
u18(E)	#5	5'-7"	▬
v2(E)	#5	1'-4"	▬
v4(E)	#5	0'-9"	▬
v5(E)	#5	0'-11"	▬
v6(E)	#5	1'-2"	▬
v7(E)	#5	1'-6"	▬
Concrete Structures	Cu. Yd.	3.9	
Reinforcement Bars, Epoxy Coated	Pound	850	
Bridge Seat Sealer	Sq. Ft.	311	
Concrete Removal	Cu. Yd.	0.7	

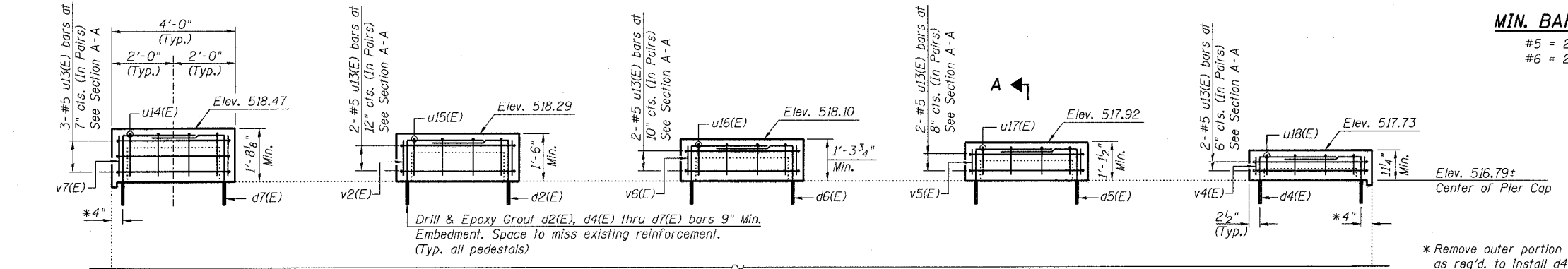
Reinforcement Bars designated (E) shall be epoxy coated.

NOTES:

- Prior to ordering any material, the Contractor shall verify in the field all bearing height and shim thickness dimensions.
- Space pedestal reinforcement to miss proposed anchor bolts.
- See Sheet 19 for removal details.
- See Sheet 215 for bearing details.



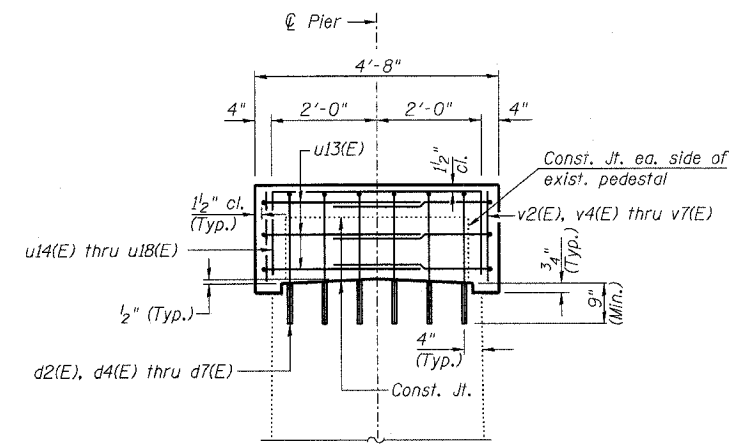
TOP PLAN OF PIER



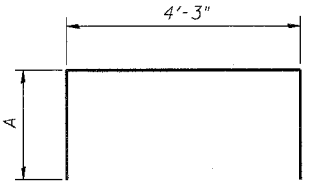
ELEVATION
(Looking North)

MIN. BAR LAP
#5 = 2'-2"
#6 = 2'-7"

* Remove outer portion of exist. pedestals as req'd. to install d4(E) and d7(E) bars

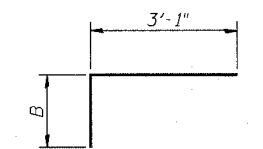


SECTION A-A



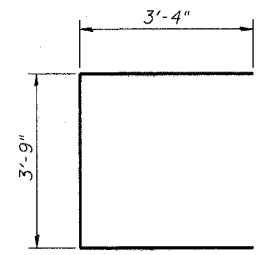
BARS u14(E) thru u18(E)

Bar	A
u14(E)	1'-5"
u15(E)	1'-3"
u16(E)	1'-1"
u17(E)	11"
u18(E)	8"



BARS d2(E), d4(E) thru d7(E)

Bar	B
d2(E)	2'-2"
d4(E)	1'-7"
d5(E)	1'-9"
d6(E)	1'-11"
d7(E)	2'-4"



BAR u13(E)

DESIGNED - DLS
CHECKED - STD
DRAWN - SGL
CHECKED - MTH

LIN ENGINEERING, LTD.
210 W. Chestnut
Chatham, Illinois 62629
(217) 483-4668
FAX (217) 483-4706

benesch
alfred benesch & company
Engineers - Surveyors - Planners
205 North Michigan Avenue, Suite 2400
Chicago, Illinois 60601
312-665-0450
Job # 3856

PEDESTAL REHAB. - PIER 28 NB
ABRAHAM LINCOLN MEMORIAL BRIDGE OVER
THE ILLINOIS RIVER (PUBLIC WATERS)
F.A.I. ROUTE 39 SEC. (50-4B) BR
LASALLE COUNTY
STATION 863+16.00
STRUCTURE NO. 050-0191 (SB & NB)

8/30/2006 10:04:30 AM x:\3800s\3856\structures\from_lin\pedestals\Ped.P28NB.sht