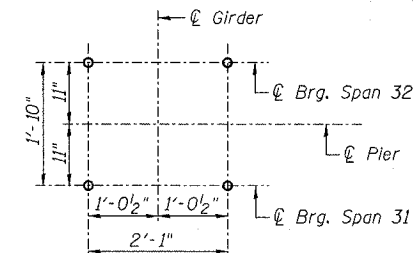


STATE OF ILLINOIS
DEPARTMENT OF TRANSPORTATION

ROUTE NO. F.A.I. 39	SECTION 50-4B	COUNTY LASALLE	TOTAL SHEETS 310	SHEET NO. 287
FED. ROAD DIST. NO. 7			ILLINOIS	FED. AID PROJECT

Contract # 66586



ANCHOR BOLT LAYOUT
(Typ. each pedestal)

**PIER 31 NB
BILL OF MATERIAL**

Bar No.	Size	Length	Shape
d2(E)	12 #6	5'-3"	┌
d4(E)	12 #6	4'-8"	┌
d5(E)	12 #6	4'-10"	┌
d6(E)	12 #6	5'-0"	┌
d7(E)	12 #6	5'-5"	┌
u13(E)	22 #5	10'-5"	▬
u14(E)	4 #5	7'-1"	▬
u15(E)	4 #5	6'-9"	▬
u16(E)	4 #5	6'-5"	▬
u17(E)	4 #5	6'-1"	▬
u18(E)	4 #5	5'-7"	▬
v2(E)	4 #5	1'-4"	▬
v4(E)	4 #5	0'-9"	▬
v5(E)	4 #5	0'-11"	▬
v6(E)	4 #5	1'-2"	▬
v7(E)	4 #5	1'-6"	▬
Concrete Structures	Cu. Yd.	3.9	
Reinforcement Bars, Epoxy Coated	Pound	850	
Bridge Seat Sealer	Sq. Ft.	311	
Concrete Removal	Cu. Yd.	0.7	

Reinforcement Bars designated (E) shall be epoxy coated.

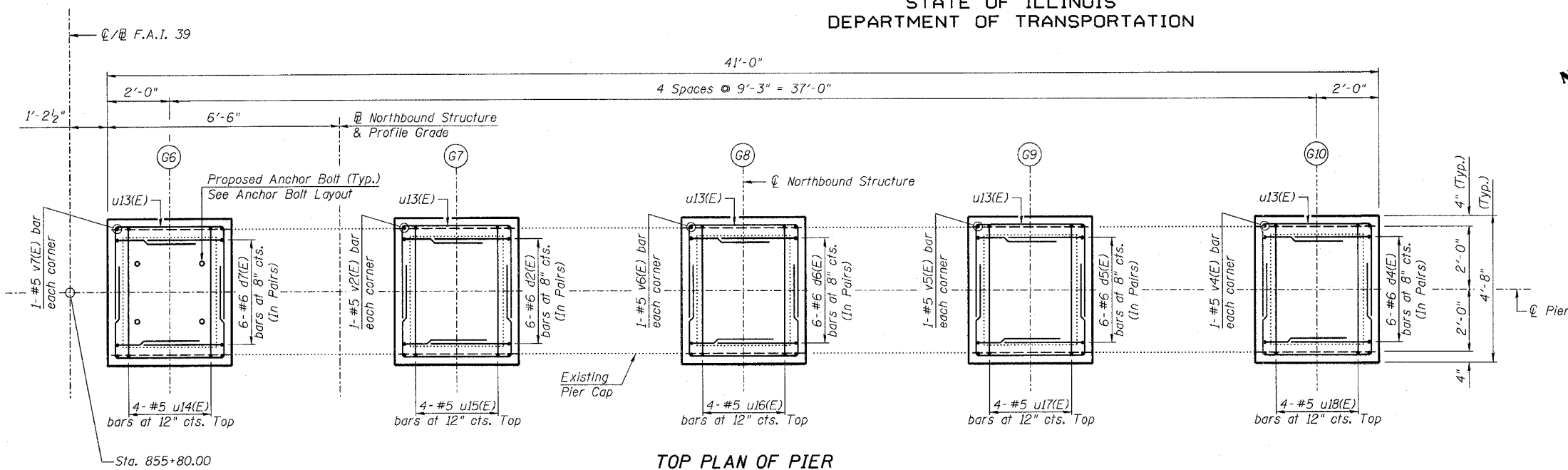
NOTES:

- Prior to ordering any material, the Contractor shall verify in the field all bearing height and shim thickness dimensions.
- Space pedestal reinforcement to miss proposed anchor bolts.
- See Sheet 19 for removal details.
- See Sheet 215 for bearing details.

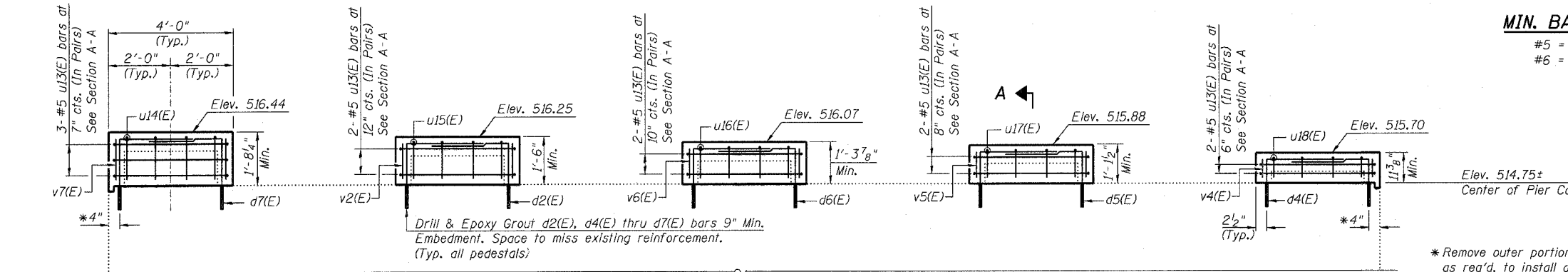
PEDESTAL REHAB. - PIER 31 NB
ABRAHAM LINCOLN BRIDGE OVER
THE ILLINOIS RIVER (PUBLIC WATERS)
F.A.I. ROUTE 39 SEC. (50-4B) BR
LASALLE COUNTY
STATION 863+16.00
STRUCTURE NO. 050-0191 (SB & NB)

MIN. BAR LAP

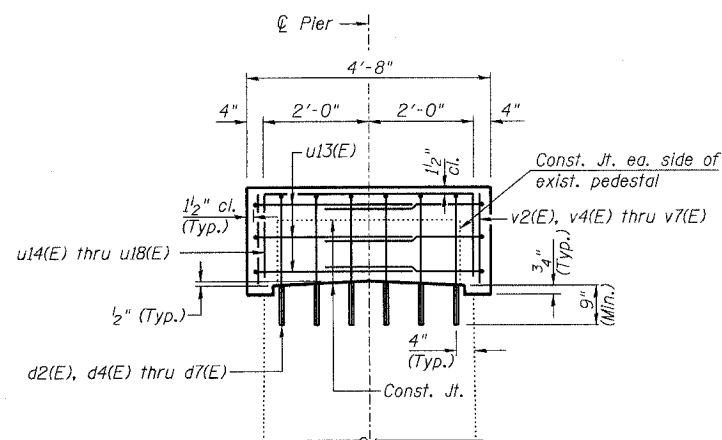
#5 = 2'-2"
#6 = 2'-7"



TOP PLAN OF PIER



ELEVATION
(Looking North)



SECTION A-A

BARS u14(E) thru u18(E)

Bar	A
u14(E)	1'-5"
u15(E)	1'-3"
u16(E)	1'-1"
u17(E)	11"
u18(E)	8"

BARS d2(E), d4(E) thru d7(E)

Bar	B
d2(E)	2'-2"
d4(E)	1'-7"
d5(E)	1'-9"
d6(E)	1'-11"
d7(E)	2'-4"

BAR u13(E)

DESIGNED - DLS
CHECKED - STD
DRAWN - SGL
CHECKED - MTH

LIN ENGINEERING, LTD.
210 W. Chestnut
Chatham, Illinois 62629
(217) 483-4838
FAX (217) 483-4706

benesch
alfred benesch & company
Engineers • Surveyors • Planners
205 North Michigan Avenue, Suite 2400
Chicago, Illinois 60601
312-965-0450
Job # 3856

x:\3800s\structures\pedestal\plans\From_Lin\Pedestals\Ped_P31NB.sht

10:04:17 AM

8/30/2006