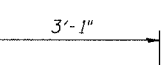
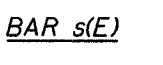
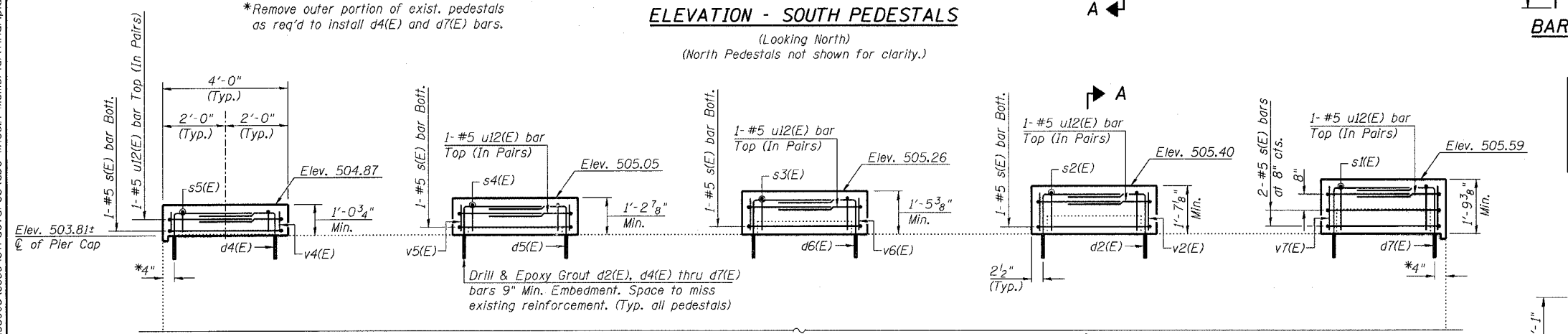
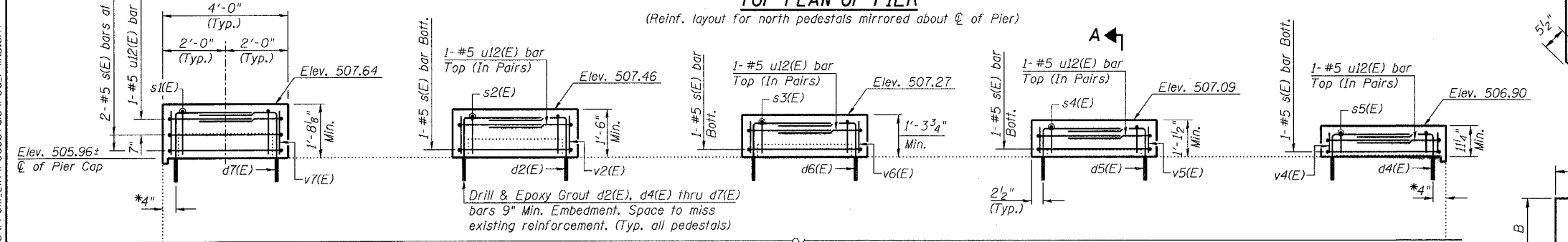
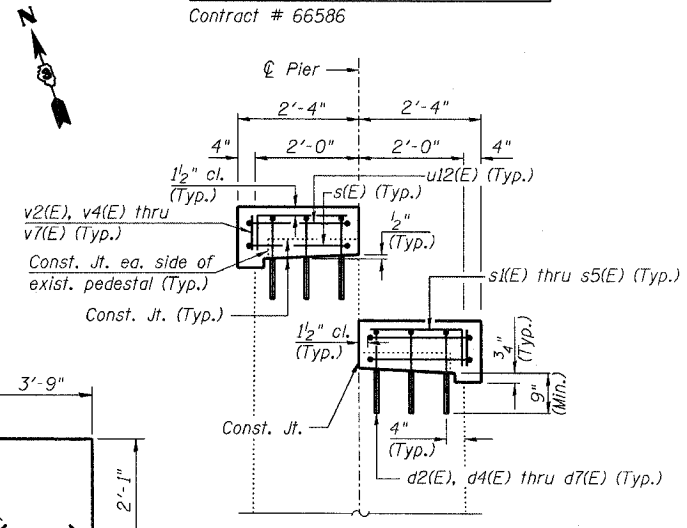
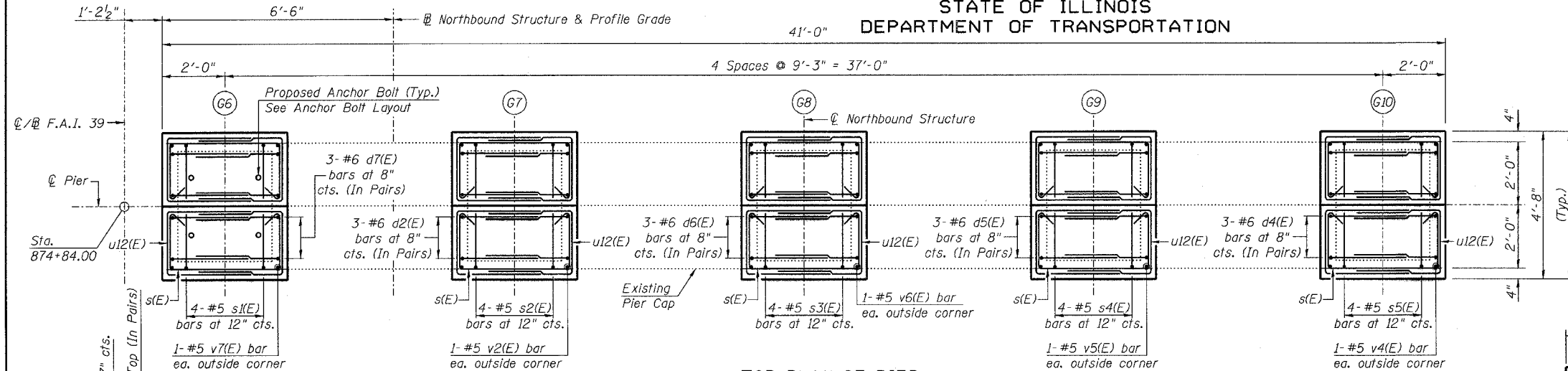


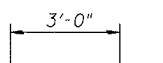
STATE OF ILLINOIS
DEPARTMENT OF TRANSPORTATION

ROUTE NO.	SECTION	COUNTY	SHEET	SHEET NO.
F.A.I. 39	50-4B	LASALLE	331	308
FED. ROAD DIST. NO. 7		ILLINOIS	FED. AID PROJECT	313 SHEETS

Contract # 66586



Bar	B
d2(E)	2'-2"
d4(E)	1'-7"
d5(E)	1'-9"
d6(E)	1'-11"
d7(E)	2'-4"

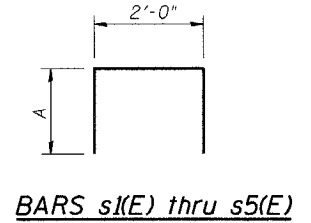


**PIER 41 NB
BILL OF MATERIAL**

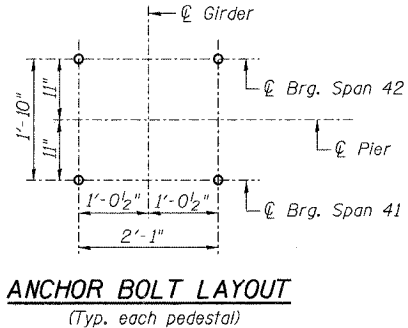
Bar	No.	Size	Length	Shape
d2(E)	12	#6	5'-3"	┌
d4(E)	12	#6	4'-8"	┌
d5(E)	12	#6	4'-10"	┌
d6(E)	12	#6	5'-0"	┌
d7(E)	12	#6	5'-5"	┌
s(E)	12	#5	8'-10"	┌
s1(E)	8	#5	5'-0"	┌
s2(E)	8	#5	4'-8"	┌
s3(E)	8	#5	4'-4"	┌
s4(E)	8	#5	3'-10"	┌
s5(E)	8	#5	3'-6"	┌
v2(E)	4	#5	1'-4"	—
v4(E)	4	#5	0'-9"	—
v5(E)	4	#5	0'-11"	—
v6(E)	4	#5	1'-2"	—
v7(E)	4	#5	1'-6"	—
u12(E)	20	#5	8'-1"	┌
Concrete Structures		Cu. Yd.	4.1	
Reinforcement Bars, Epoxy Coated		Pound	940	
Bridge Seat Sealer		Sq. Ft.	344	
Concrete Removal		Cu. Yd.	0.7	

Reinforcement Bars designated (E) shall be epoxy coated.

MIN. BAR LAP
#5 = 2'-2"
#6 = 2'-7"



Bar	A
s1(E)	1'-6"
s2(E)	1'-4"
s3(E)	1'-2"
s4(E)	1"
s5(E)	9"



NOTES:

1. Prior to ordering any material, the Contractor shall verify in the field all bearing height and shim thickness dimensions.
2. Space pedestal reinforcement to miss proposed anchor bolts.
3. See Sheet 19 for removal details.
4. See Sheet 215 for bearing details.

PEDESTAL REHAB. - PIER 41 NB
ABRAHAM LINCOLN MEMORIAL BRIDGE OVER
THE ILLINOIS RIVER (PUBLIC WATERS)
F.A.I. ROUTE 39 SEC. (50-4B) BR
LASALLE COUNTY
STATION 863+16.00
STRUCTURE NO. 050-0191 (SB & NB)

benesch
alfred benesch & company
Engineers • Surveyors • Planners
205 North Michigan Avenue, Suite 2400
Chicago, Illinois 60601
312-565-0450
Job # 3856

LIN ENGINEERING, LTD.
210 W. Chestnut
Chatham, Illinois 62629
(217) 483-4868
FAX (217) 483-4706

8/30/2006 10:03:26 AM x:\3800s\3856\structures\abe lincoln memorial\final\plans\From_Lin\Pedestals\Ped.P41NB.sht