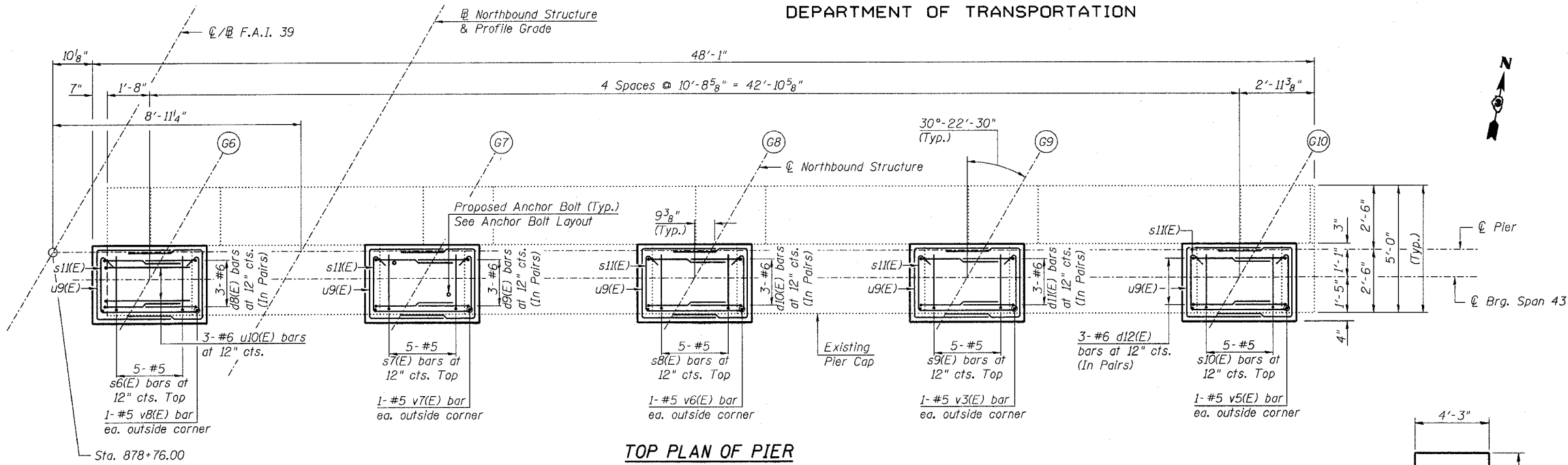


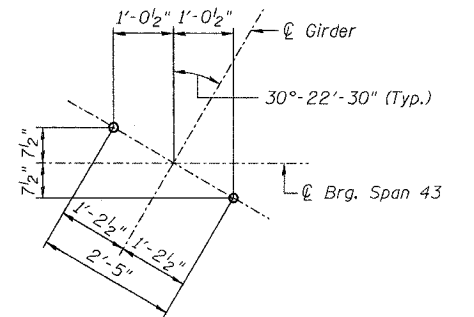
STATE OF ILLINOIS
DEPARTMENT OF TRANSPORTATION

ROUTE NO.	SECTION	COUNTY	SHEET	SHEET NO.
F.A.I. 39	50-4B	LASALLE	33b	313
FED. ROAD DIST. NO. 7		ILLINOIS	FED. AID PROJECT	313 SHEETS

Contract # 66586



TOP PLAN OF PIER



ANCHOR BOLT LAYOUT
(Typ. each pedestal)

PIER 43 NB
BILL OF MATERIAL

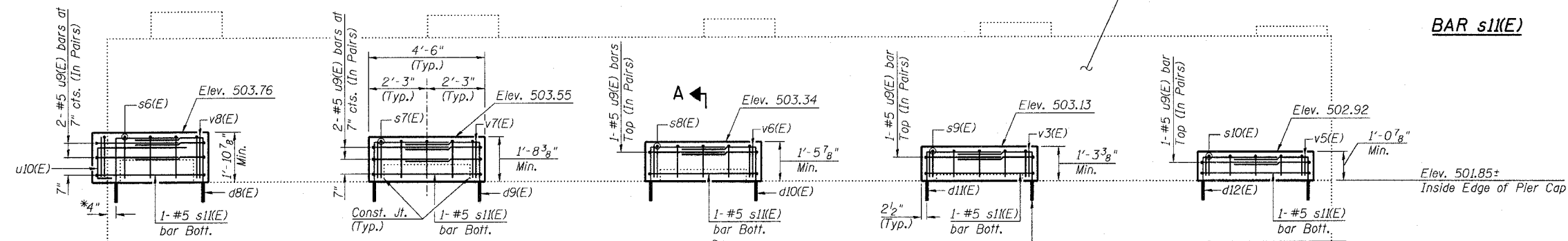
Bar	No.	Size	Length	Shape
d8(E)	6	#6	5'-10"	┌
d9(E)	6	#6	5'-7"	┌
d10(E)	6	#6	5'-5"	┌
d11(E)	6	#6	5'-2"	┌
d12(E)	6	#6	5'-0"	┌
s6(E)	5	#5	4'-5"	┌
s7(E)	5	#5	4'-2"	┌
s8(E)	5	#5	4'-0"	┌
s9(E)	5	#5	3'-9"	┌
s10(E)	5	#5	3'-7"	┌
s11(E)	5	#5	10'-10"	┌
u9(E)	14	#5	9'-4"	┌
u10(E)	3	#6	5'-9"	┌
v3(E)	2	#5	1'-0"	—
v5(E)	2	#5	0'-11"	—
v6(E)	2	#5	1'-2"	—
v7(E)	2	#5	1'-5"	—
v8(E)	2	#5	1'-8"	—
Concrete Structures		Cu. Yd.	3.2	
Reinforcement Bars, Epoxy Coated		Pound	580	
Bridge Seat Sealer		Sq. Ft.	231	
Concrete Removal		Cu. Yd.	0.7	

Reinforcement Bars designated (E) shall be epoxy coated.

NOTES:

1. Prior to ordering any material, the Contractor shall verify in the field all bearing height and shim thickness dimensions.
2. Space pedestal reinforcement to miss proposed anchor bolts.
3. See Sheet 19 for removal details.
4. See Sheet 215 for bearing details.

PEDESTAL REHAB. - PIER 43 NB
ABRAHAM LINCOLN MEMORIAL BRIDGE OVER
THE ILLINOIS RIVER (PUBLIC WATERS)
F.A.I. ROUTE 39 SEC. (50-4B) BR
LASALLE COUNTY
STATION 863+16.00
STRUCTURE NO. 050-0191 (SB & NB)

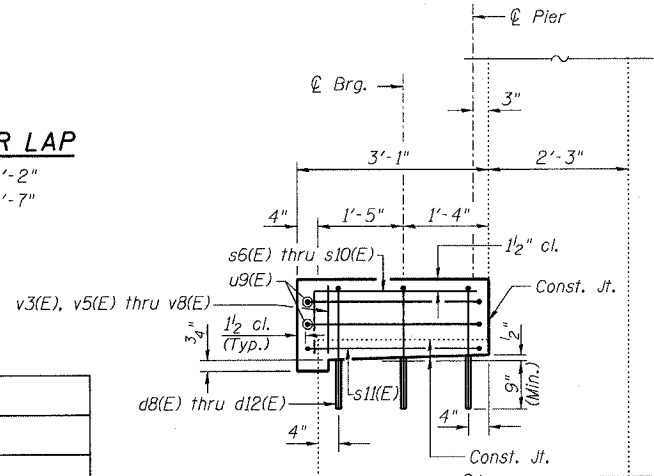


ELEVATION
(Looking North)

*Remove outer portion of exist. pedestal as req'd. to install d8(E) bars.

MIN. BAR LAP

- #5 = 2'-2"
- #6 = 2'-7"



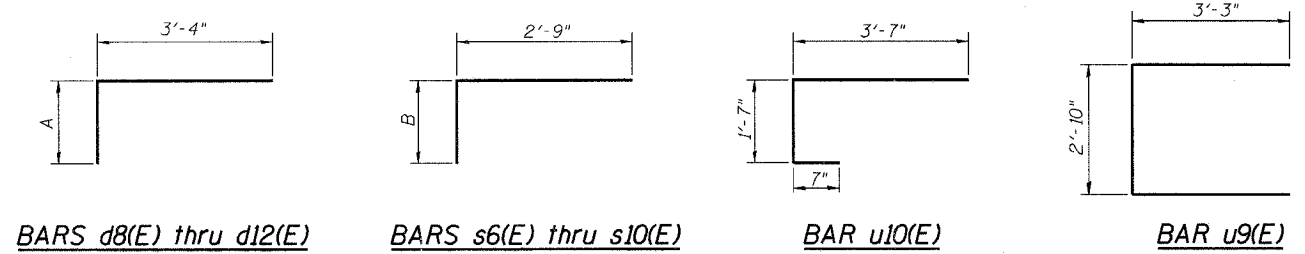
SECTION A-A

BARS d8(E) thru d12(E)

Bar	A
d8(E)	2'-6"
d9(E)	2'-3"
d10(E)	2'-1"
d11(E)	1'-10"
d12(E)	1'-8"

BARS s6(E) thru s10(E)

Bar	B
s6(E)	1'-8"
s7(E)	1'-5"
s8(E)	1'-3"
s9(E)	1'-0"
s10(E)	10"



DESIGNED - DLS
CHECKED - STD
DRAWN - KHH
CHECKED - MTH

LIN ENGINEERING, LTD.
210 W. Chestnut
Cotham, Illinois 62629
(217) 483-4168
FAX (217) 483-4706

benesch
alfred benesch & company
Engineers - Surveyors - Planners
206 North Michigan Avenue, Suite 2400
Chicago, Illinois 60601
312-565-0450
Job # 3858

8/30/2006 10:03:00 AM x:\3800s\3858\structures\abe lincoln memorial\final\plans\From_Lin_Pedestals\Ped_P43NB.sht