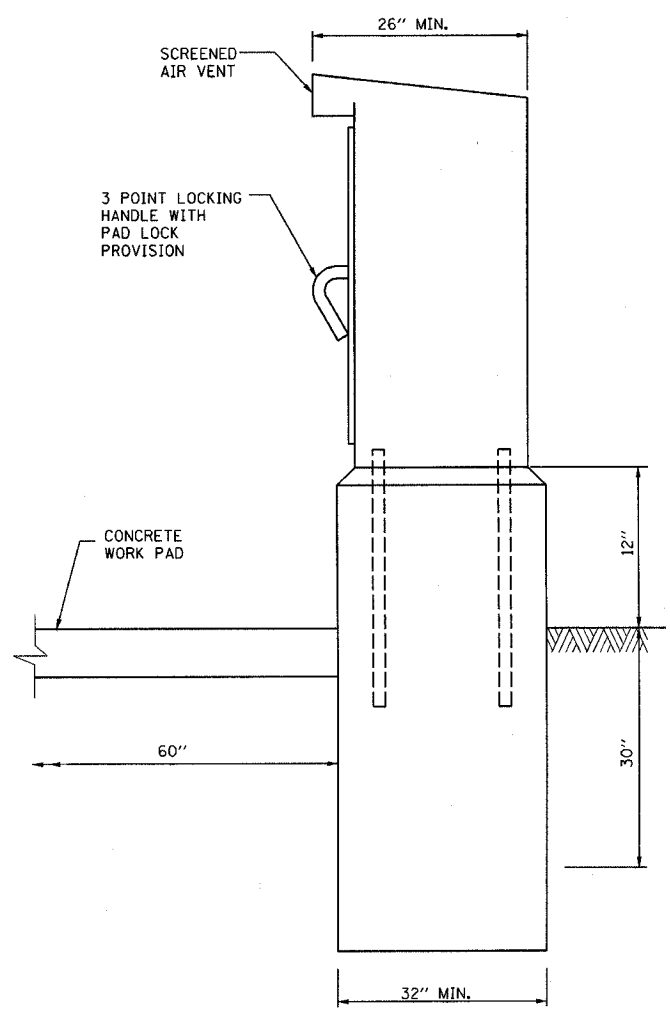
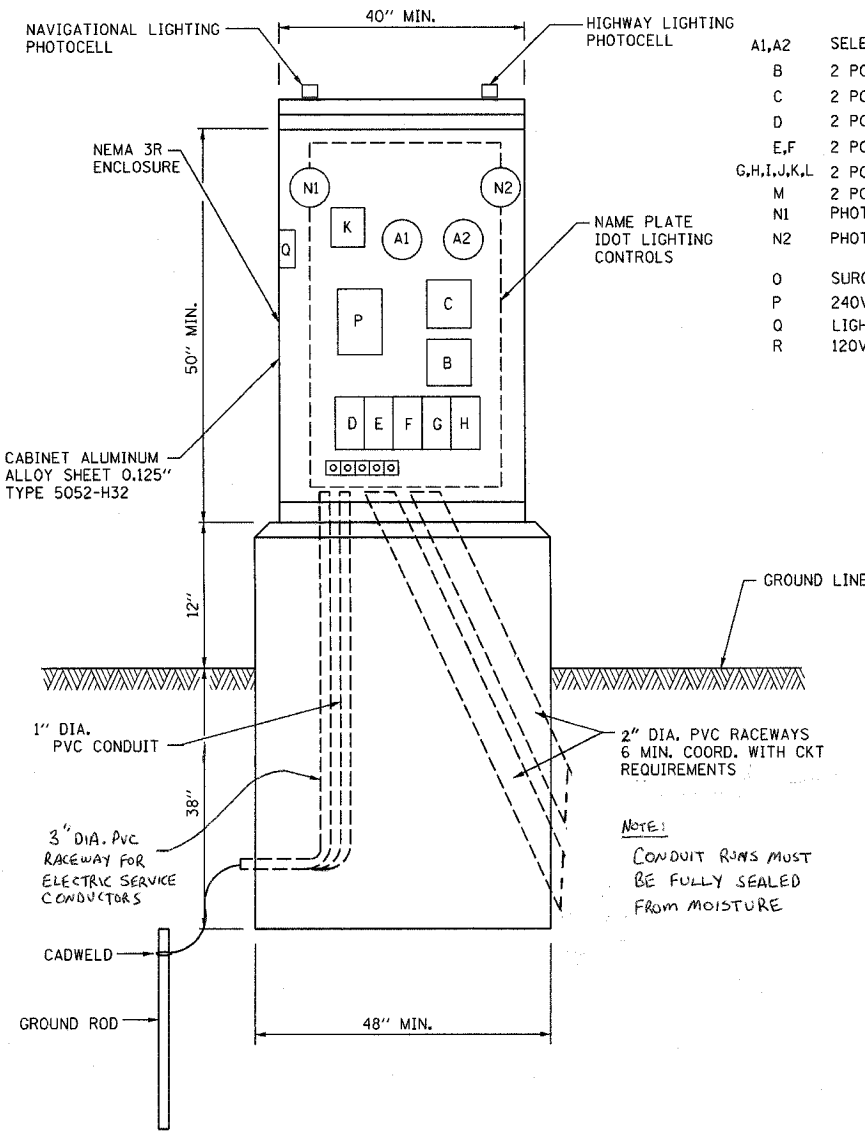


F.A. RTE.	SECTION	COUNTY	TOTAL SHEETS	SHEET NO.
39	50-4B	LASALLE		357
STA.		TO STA.		
FED. ROAD DIST. NO. ILLINOIS FED. AID PROJECT				



**CABINET & FOUNDATION**

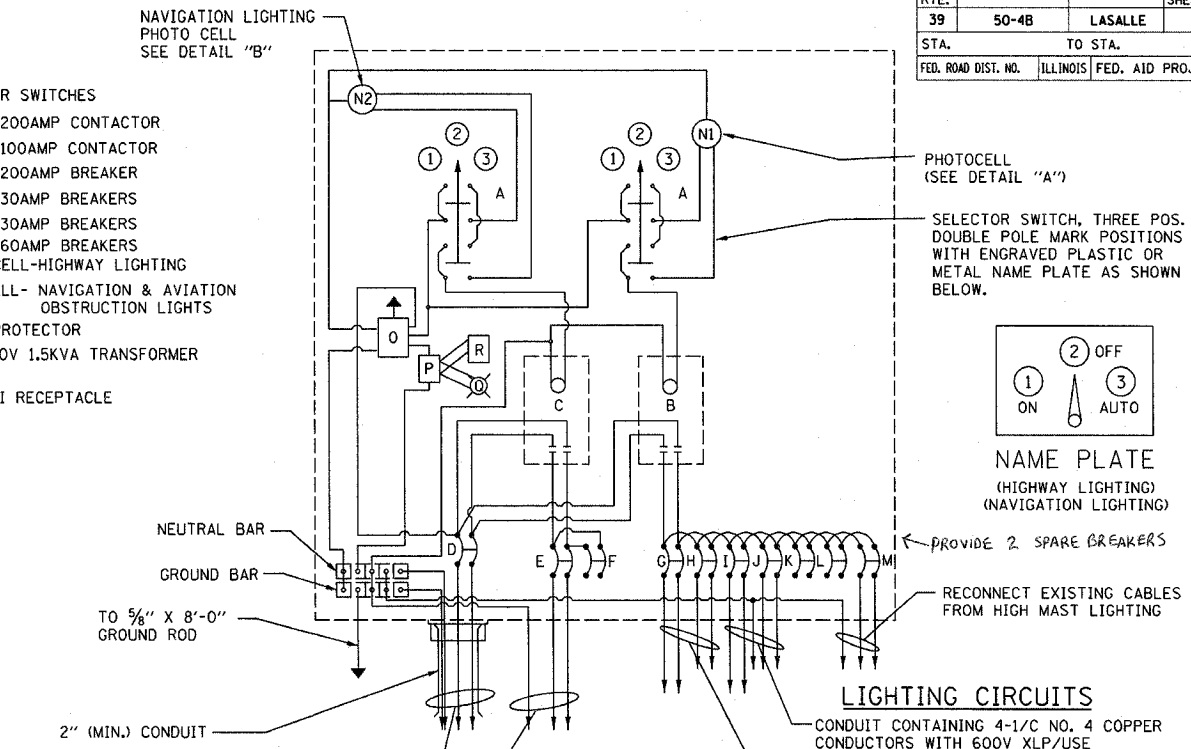
\* THE COST OF THE GROUND ROD AND GROUND CLAMP SHALL BE INCLUDED IN THE PAY ITEM "LIGHTING CONTROLLER."  
 THE FOLLOWING SHALL BE INCLUDED IN THE CONTROLLER CABINET:  
 -GFI SERVICE RECEPTACLE.  
 -CAGE MOUNTED SERVICE LIGHT FIXTURE WITH ON/OFF SWITCH.  
 -STEP DOWN TRANSFORMER WITH SECONDARY FUSING.  
 THESE ITEMS SHALL BE INCLUDED IN THE PAY ITEM "LIGHTING CONTROLLER" TYPE CB-RCS, 200AMP-480VOLT-DUAL"



**CABINET FOUNDATION & DIAGRAMMATIC ASSEMBLY (FRONT VIEW)**

NOTE:  
 CONDUIT RIMS MUST BE FULLY SEALED FROM MOISTURE

- A1,A2 SELECTOR SWITCHES
- B 2 POLE 200AMP CONTACTOR
- C 2 POLE 100AMP CONTACTOR
- D 2 POLE 200AMP BREAKER
- E,F 2 POLE 30AMP BREAKERS
- G,H,I,J,K,L 2 POLE 30AMP BREAKERS
- M 2 POLE 60AMP BREAKERS
- N1 PHOTO CELL-HIGHWAY LIGHTING
- N2 PHOTOCELL- NAVIGATION & AVIATION OBSTRUCTION LIGHTS
- O SURGE PROTECTOR
- P 240V/120V 1.5KVA TRANSFORMER
- Q LIGHT
- R 120V GFI RECEPTACLE



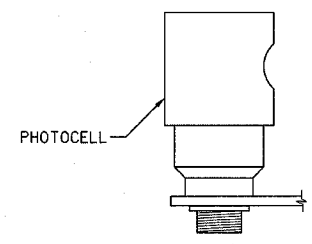
**WIRING DIAGRAM**

**SERVICE**

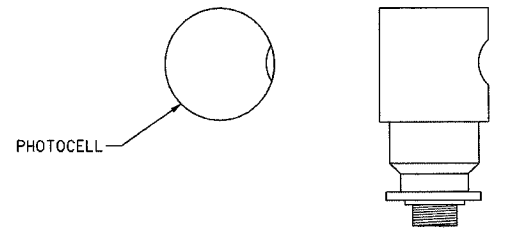
4-1/2 #3/0 COPPER CONDUCTORS WITH 600V XLP/USE-2 INSULATION MAY ALSO INCLUDE PHOTOCELL CONTROL WIRE.  
 CONDUIT CONTAINING 2-1/2 NO. 8 COPPER CONDUCTORS WITH 600V XLP/USE INSULATION & 1-1/2 NO. 8 COPPER, GREEN CONTINUOUS GROUND FOR NAVIGATION LIGHTING

**NOTE:**

WIRING SHALL BE PANEL BOARD FASHION. ALL BENDS SHALL BE RIGHT ANGLES. ALL RUNS SHALL BE VERTICAL OR PARALLEL TO PANEL BOARD. WIRES SHALL BE GROUPED OR LACED



**DETAIL "A" HIGHWAY LIGHTING PHOTOCELL**  
 PHOTOCELL WINDOW SHALL BE FACING TO NORTH.



**DETAIL "B" NAVIGATION LIGHTING PHOTOCELL**

NOTE:  
 1. SEE ARTICLE 1068.01 (e) (d) h. FOR NAVIGATIONAL PHOTOCELL REQUIREMENTS.  
 2. PHOTOCELL WINDOW SHALL BE FACING TO NORTH.

REVISIONS	
NAME	DATE

ILLINOIS DEPARTMENT OF TRANSPORTATION  
 ABRAHAM LINCOLN MEMORIAL BRIDGE  
 OVER THE ILLINOIS RIVER  
 F.A.I. ROUTE 39  
 LIGHTING CONTROL INSTALLATION

SCALE: NONE  
 DATE: \_\_\_\_\_  
 DRAWN BY DJK  
 CHECKED BY GHT

PLOT DATE = 10/17/2005  
 FILE NAME = \\s380005\3856\electrical\lighting\plans\3856L1 Contr.oller.dgn  
 PLOT SCALE = \$SCALE\$  
 TIME = 3:03:03 PM