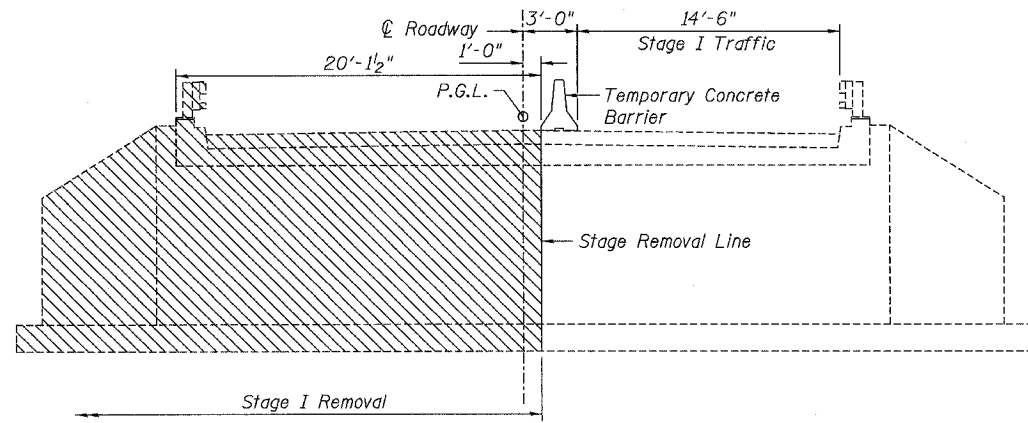


STATE OF ILLINOIS
DEPARTMENT OF TRANSPORTATION

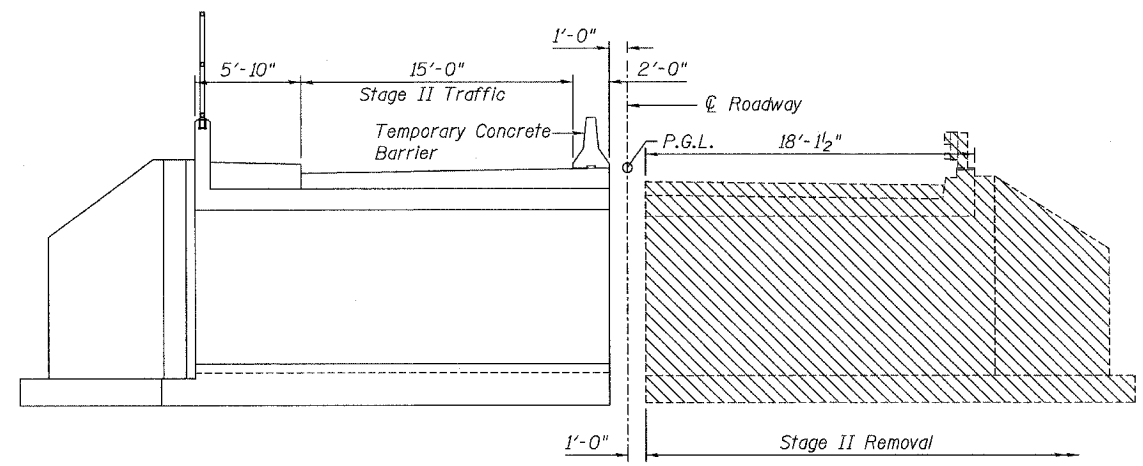
ROUTE NO.	SECTION	COUNTY	TOTAL SHEETS	SHEET NO.	SHEET NO. 2 OF 10 SHEETS
F.A.S. 1279	(P-10)BR	LaSALLE	34	11	
FED. ROAD DIST. NO. 7	ILLINOIS	FED. AID PROJECT			

Contract #66661



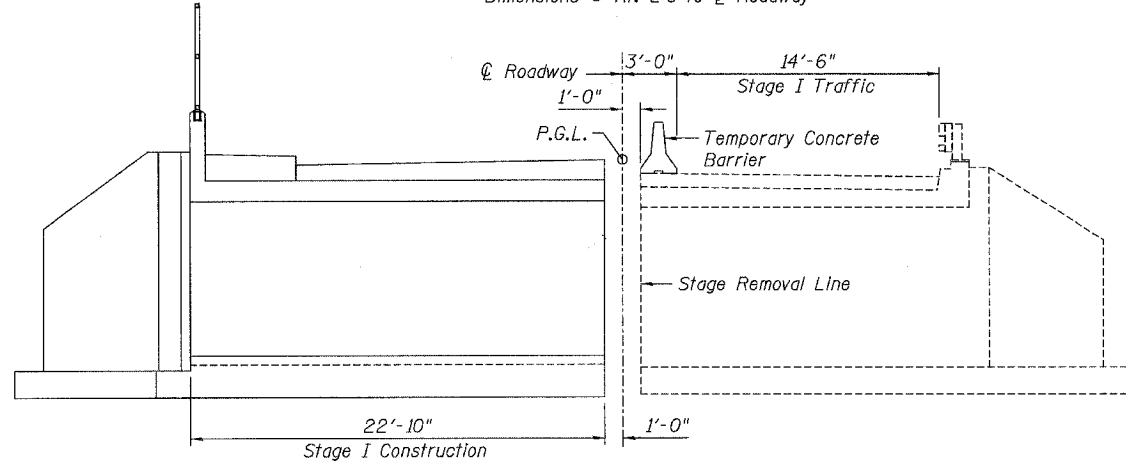
STAGE I REMOVAL

(Looking North)
Dimensions @ Rt. L's to $\text{\textcircled{C}}$ Roadway



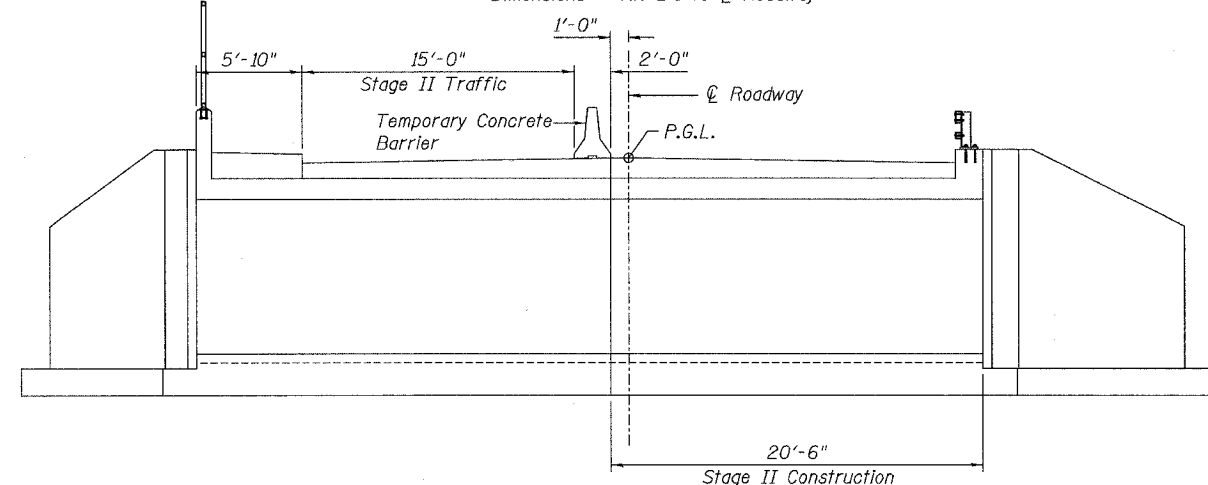
STAGE II REMOVAL

(Looking North)
Dimensions @ Rt. L's to $\text{\textcircled{C}}$ Roadway



STAGE I CONSTRUCTION

(Looking North)
Dimensions @ Rt. L's to $\text{\textcircled{C}}$ Roadway

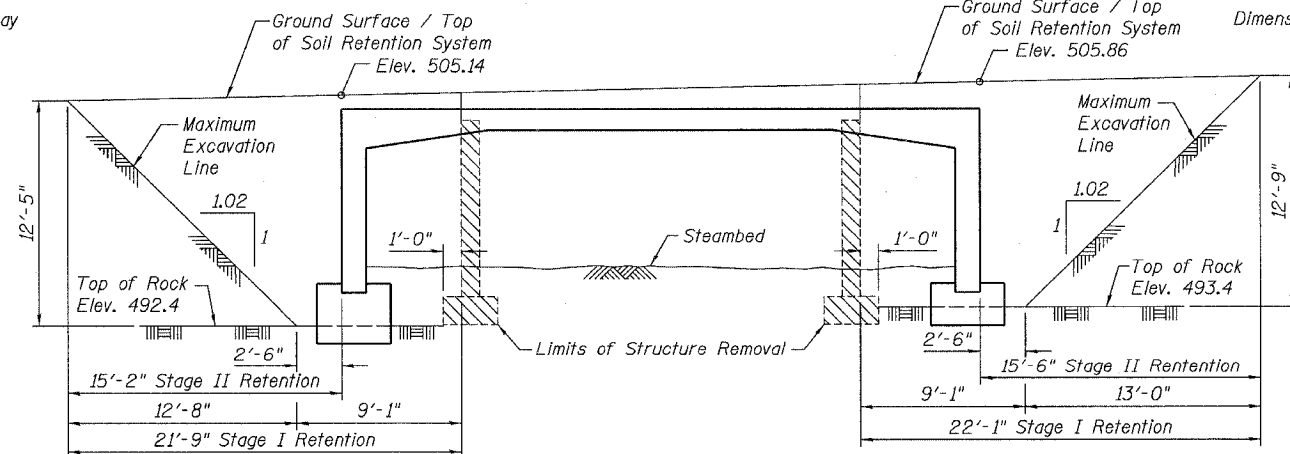


STAGE II CONSTRUCTION

(Looking North)
Dimensions @ Rt. L's to $\text{\textcircled{C}}$ Roadway

NOTES

- Removal of existing railing and existing wearing surface is included with "Removal of Existing Structures".
- Hatched area indicates Removal of Existing Structures.
- For quantity and location of Temporary Concrete Barrier, see Roadway Plans.



TEMPORARY SOIL RETENTION DETAILS

(Slopes and Horizontal dimensions are measured parallel to $\text{\textcircled{C}}$ Roadway)

A cantilevered sheet piling design does not appear feasible and additional member or other retention systems may be necessary. The Contractor shall submit a temporary soil retention system design including plan details and calculations for review and acceptance by the Engineer.

DESIGNED	DAF
CHECKED	AAG
DRAWN	DAF
CHECKED	KBG

STAGE CONSTRUCTION DETAILS
F.A.S. 1279 - ILLINOIS RTE. 178
OVER CLARK RUN
SECTION (P-10)BR
LaSALLE COUNTY
STATION 151+38.00
STRUCTURE NO. 050-0238