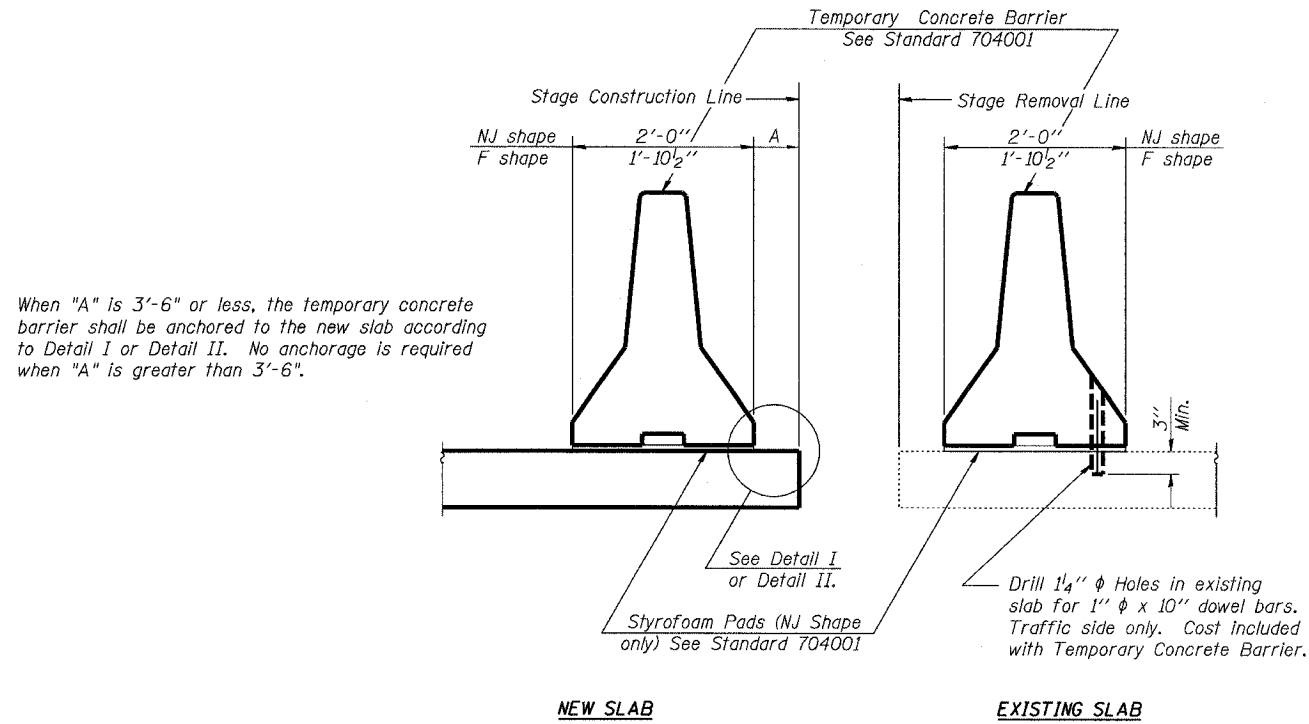


STATE OF ILLINOIS
DEPARTMENT OF TRANSPORTATION

ROUTE NO.	SECTION	COUNTY	SHEET NO.	SHEET NO. 3
F.A.S. 1279	(P-10)BR	LaSALLE	34	12
FED. ROAD DIST. NO. 7	ILLINOIS	FED. AID PROJECT		OF 10 SHEETS

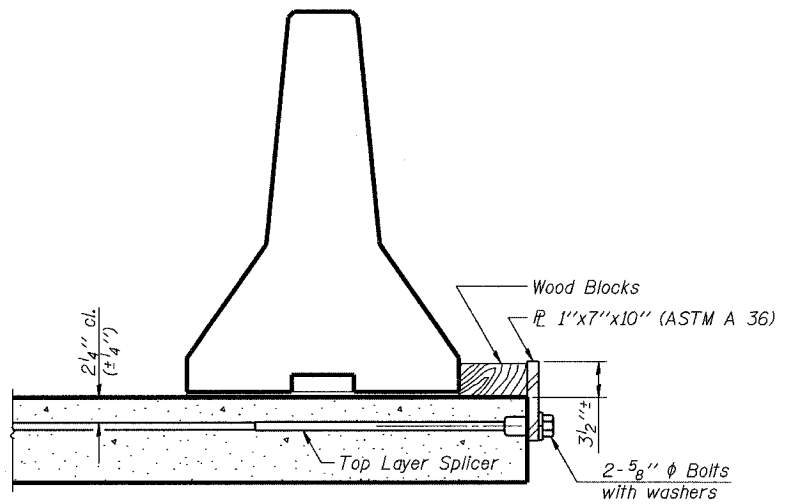
Contract #66661



SECTIONS THRU SLAB

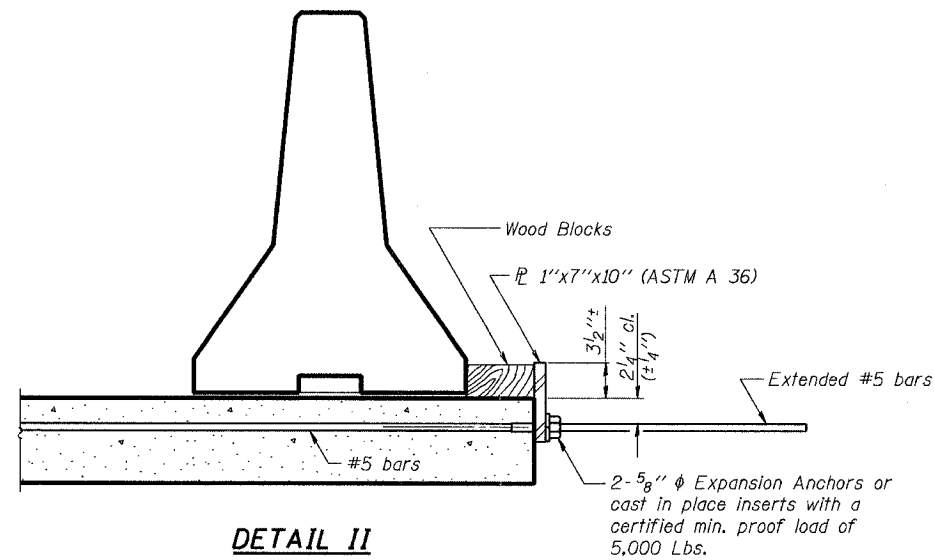
NOTES

- Detail I - With Bar Splicer or Couplers:
Connect one (1) 1"x7"x10" steel \bar{P} to the top layer of couplers with 2-5/8" ϕ bolts screwed to coupler at approximate \bar{C} of each barrier panel.
- Detail II - With Extended Reinforcement Bars:
Connect one (1) 1"x7"x10" steel \bar{P} to the concrete slab with 2-5/8" ϕ Expansion Anchors or cast in place inserts spaced between the top layer of reinforcement at approximate \bar{C} of each barrier panel.
- Cost of anchorage is included with Temporary Concrete Barrier.



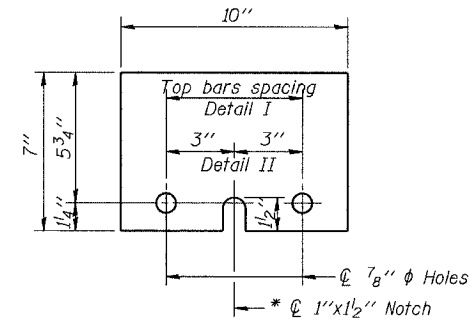
DETAIL I

The 1"x7"x10" Plate shall not be removed until Stage II Construction forms and reinforcement bars are in place.



DETAIL II

The 1"x7"x10" Plate shall not be removed until Stage II Construction forms and all reinforcement bars are in place and the concrete is ready to be placed.



1"x7"x10"

* Required only with Detail II

DESIGNED	DAF
CHECKED	AAG
DRAWN	DAF
CHECKED	KBG

R-27

10-22-04

**TEMPORARY CONCRETE BARRIER
FOR STAGE CONSTRUCTION**
F.A.S. 1279 - ILLINOIS RTE. 178
OVER CLARK RUN
SECTION (P-10)BR
LaSALLE COUNTY
STATION 151+38.00
STRUCTURE NO. 050-0238