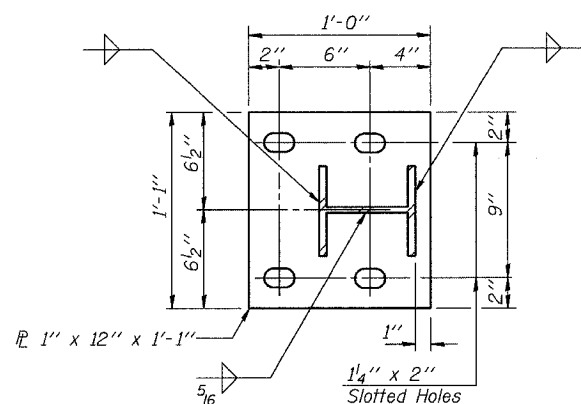


STATE OF ILLINOIS
DEPARTMENT OF TRANSPORTATION

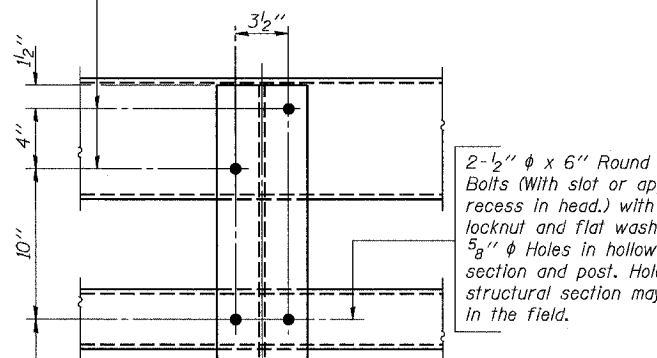
ROUTE NO.	SECTION	COUNTY	SHEET NO.	SHEET NO.
F.A.S. 1279	(P-10)BR	LaSALLE	34	15
FED. ROAD DIST. NO. 7	ILLINOIS	FED. AID PROJECT-	Contract #66661	

SHEET NO. 6
OF 10 SHEETS

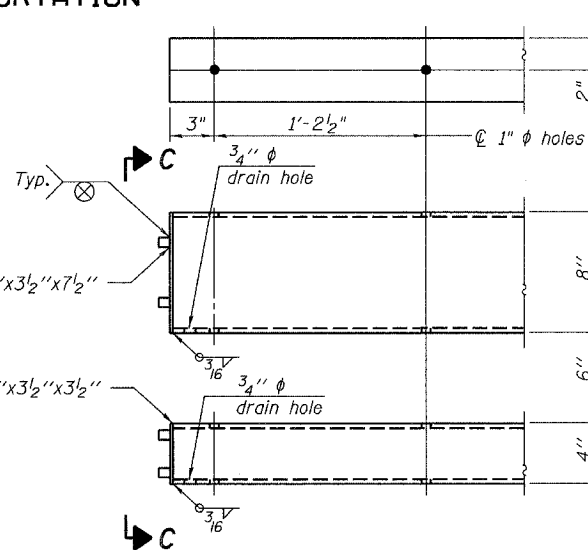


BASE PLATE DETAIL

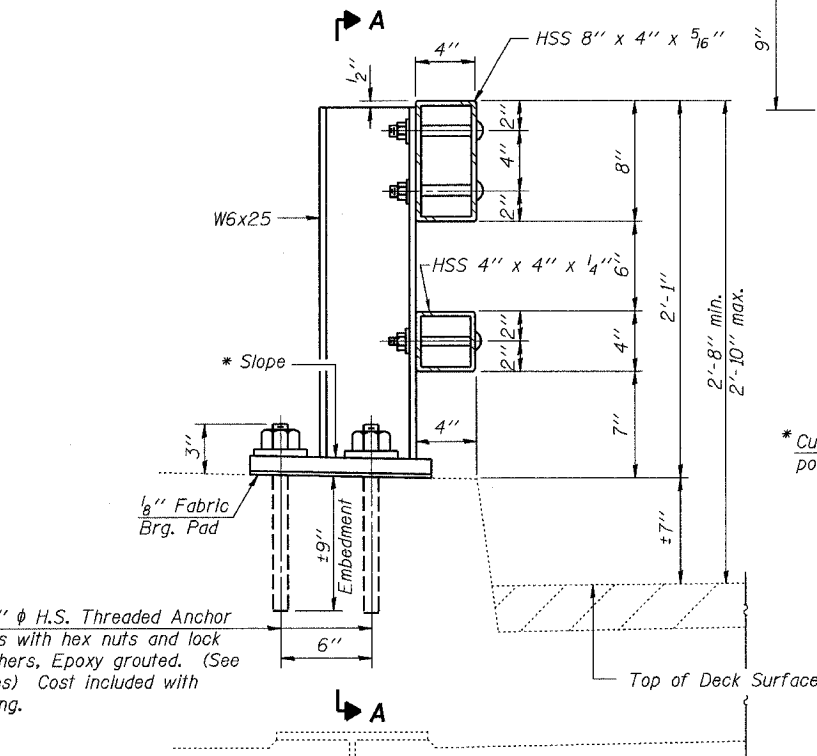
2-3/4" ϕ x 6" Round Head Bolts (With slot or approved recess in head.) with locknut and flat washer.
7/8" ϕ Holes in tubing and posts. Holes in hollow structural section may be drilled in the field.



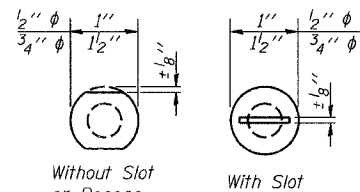
SECTION A-A



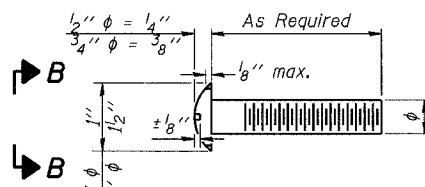
END OF RAIL DETAILS



SECTION AT RAIL POST

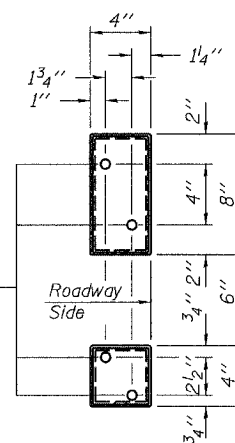


VIEW B-B



DETAIL OF 1/2" ϕ & 3/4" ϕ ROUND HEAD BOLTS

4-5/8" reduced base welded studs. Provide 4-5/8" washers and self-locking nuts or nuts and jam nuts for guardrail connection shown on Std. 631032

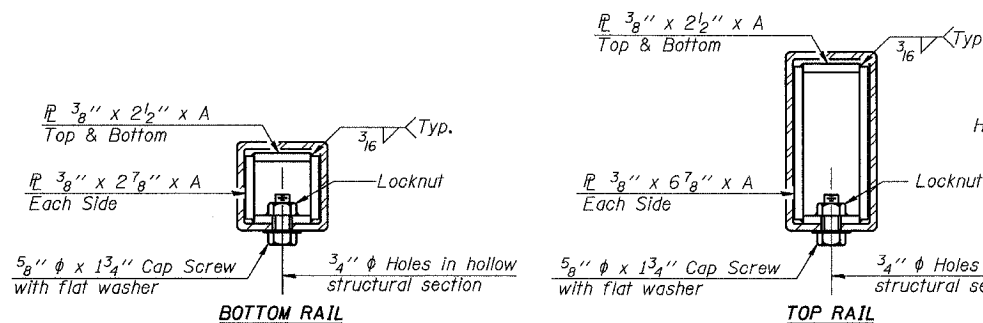


VIEW C-C

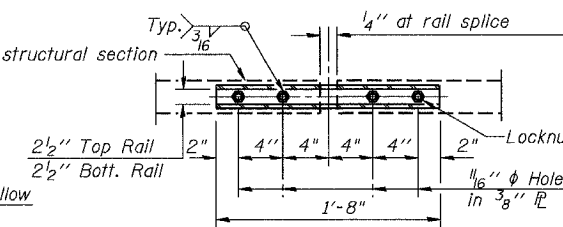
BILL OF MATERIAL

Item	Unit	Quantity
Steel Bridge Rail	Foot	35

DESIGNED	DAF
CHECKED	AAG
DRAWN	DAF
CHECKED	KBG



SECTIONS AT RAIL SPLICE



PLAN-BOTT. SPLICE TYPICAL

**STEEL BRIDGE RAIL
CURB MOUNTED**

(2399)

F.A.S. 1279 - ILLINOIS RTE. 178
OVER CLARK RUN
SECTION (P-10)BR
LaSALLE COUNTY
STATION 151+38.00
STRUCTURE NO. 050-0238