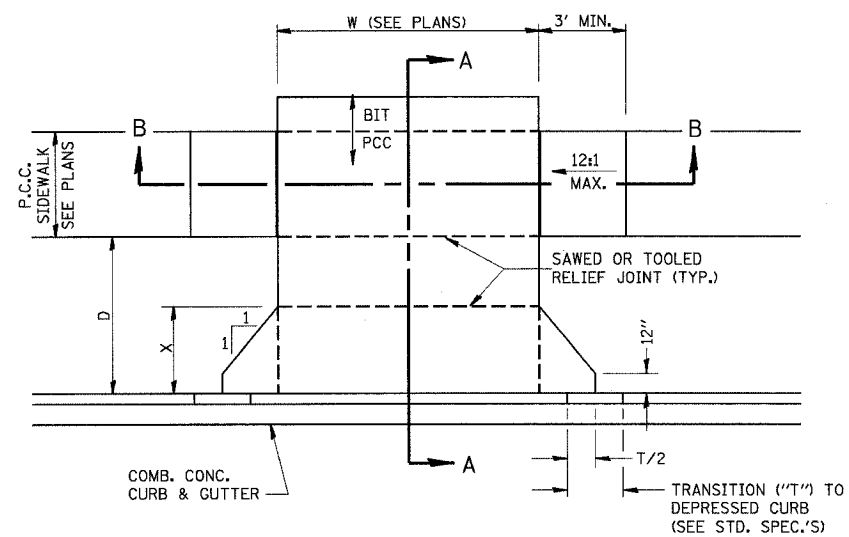
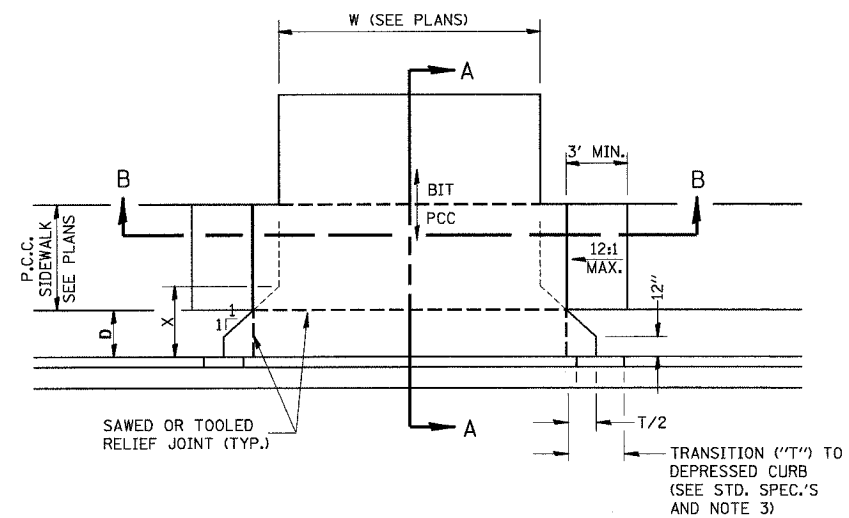


F.A.S. RTE.	SECTION	COUNTY	TOTAL SHEETS	SHEET NO.
1279	(P-10)BR	LASALLE	34	25
STA. N/A		TO STA. N/A		
FED. ROAD DIST. NO. 7 ILLINOIS FED. AID PROJECT				

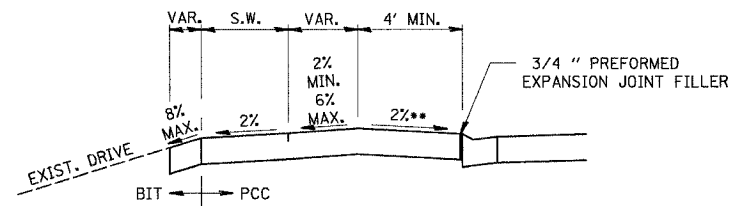
CONTRACT NO. 66661



CASE I (D ≥ X)

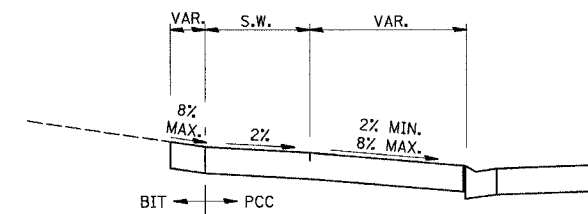


CASE I (D < X)

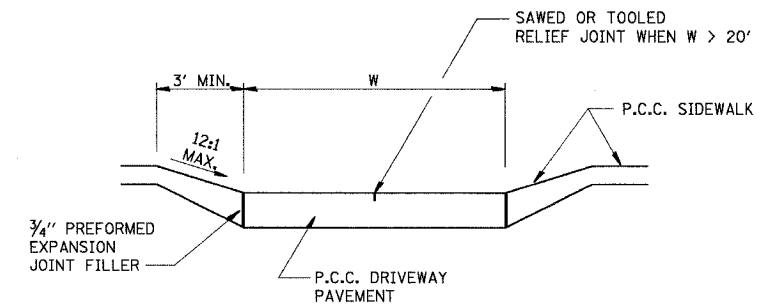


DEPRESSED ENTRANCE*
SECTION A-A

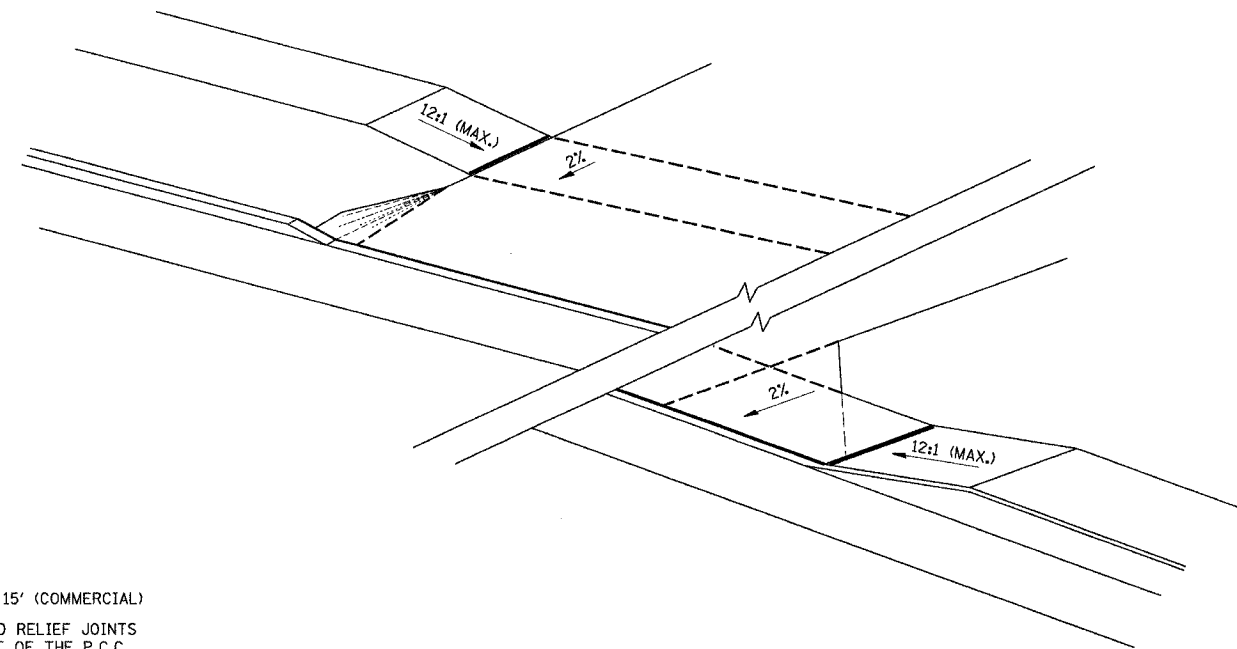
* SEE X-SECTIONS FOR ENTRANCE PROFILE.
** PE STA. 152+95.90 RT SHALL BE CONSTRUCTED AT -2.00%.



ELEVATED ENTRANCE*
SECTION A-A



SECTION B-B



GENERAL NOTES:

1. X = 7' (NON-COMMERCIAL) X = 15' (COMMERCIAL)
2. COST OF EXPANSION JOINTS AND RELIEF JOINTS SHALL BE INCLUDED IN THE COST OF THE P.C.C. DRIVEWAY PAVEMENT.
3. AS THE DIMENSION "D" APPROACHES ZERO, THE TRANSITION TO DEPRESSED CURB SHALL BE NO STEEPER THAN 12:1

PCC URBAN ENTRANCES
423-1

REVISIONS	
NAME	DATE

ILLINOIS DEPARTMENT OF TRANSPORTATION

MISC. DETAILS

SCALE: VERT. NONE
HORIZ. NONE
DATE JULY 3, 2006

DRAWN BY DAC
CHECKED BY SMK