



# Illinois Department of Transportation

2300 South Dirksen Parkway / Springfield, Illinois / 62764

November 3, 2006

SUBJECT: FAP Route 315 (IL 336 & US 136)  
Project ACNHF-0315 (047)  
Section (34-6, 55-1)  
Hancock & McDonough Counties  
Contract No. 68206  
Item No. 26, November 17, 2006 Letting  
Addendum A

## NOTICE TO PROSPECTIVE BIDDERS:

Attached is an addendum to the plans or proposal. This addendum involves revised and/or added material.

1. Revised entire Schedule of Prices.
2. Revised page iv of the Table of Contents to the Special Provisions.
3. Added pages 184 - 215 to the Special Provisions.
4. Revised sheets 11, 12, 16, 21, 22, 31, 139, 140, 314-317, 321-330 of the Plans.

Prime contractors must utilize the enclosed material when preparing their bid and must include any Schedule of Prices changes in their bidding proposal.

Bidders using computer-generated bids are cautioned to reflect any and all Schedule of Prices changes, if involved, into their computer programs.

Very truly yours,

Michael L. Hine  
Engineer of Design  
and Environment

A handwritten signature in black ink, appearing to read 'Ted B. Walschleger' followed by a small 'P.E.' monogram.

By: Ted B. Walschleger, P. E.  
Engineer of Project Management

cc: J. E. Crowe, Region 3, District 4; Roger Driskell; Estimates; Design & Environment File

TBW:RS:jc

ILLINOIS DEPARTMENT OF TRANSPORTATION  
 SCHEDULE OF PRICES  
 CONTRACT  
 NUMBER - 68206

State Job # - C-94-014-02  
 PPS NBR - 4-44400-0100  
 County Name - HANCOCK- MCDONOUGH-  
 Code - 67 - 109 -  
 District - 4 - 4 -  
 Section Number - (34-6,55-1)

Project Number  
 ACNHF-0315/047/

Route  
 FAP 315

\* COMPLETE NEW SCHEDULE

Item Number	Pay Item Description	Unit of Measure	Quantity	x	Unit Price	=	Total Price
A2002016	T-AESCLUSUS GLA 2	EACH	55.000				
A2002816	T-CATALPA SPEC 2	EACH	55.000				
A2002916	T-CELTIS OCCID 2	EACH	80.000				
A2005016	T-GYMNOCLA DIO 2	EACH	60.000				
A2007616	T-TAXODIUM DIS 2	EACH	30.000				
B2001166	T-CERCIS CAN CL 6'	EACH	50.000				
C2C02024	S-CORYLUS AMER 2'C	EACH	200.000				
C2C11724	S-VIBURN DENT 2'C	EACH	300.000				
D2002760	E-PINUS NIGRA 5'	EACH	75.000				
D2002960	E-PINUS STROBUS 5'	EACH	30.000				
K1005431	SEEDLING MIX "A"	UNIT	10.000				
XX001899	STORM SEW 2 6 (FTR)	FOOT	4,000.000				
XX001900	STORM SEW 2 8 (FTR)	FOOT	2,000.000				
XX001901	STORM SEW 2 12 (FTR)	FOOT	2,000.000				
X0301512	GDRL AGG EROS CONT	TON	603.000				

ILLINOIS DEPARTMENT OF TRANSPORTATION  
 SCHEDULE OF PRICES  
 CONTRACT  
 NUMBER - 68206

State Job # - C-94-014-02  
 PPS NBR - 4-44400-0100  
 County Name - HANCOCK- MCDONOUGH-  
 Code - 67 - 109 -  
 District - 4 - 4 -  
 Section Number - (34-6,55-1)

Project Number  
 ACNHF-0315/047/

Route  
 FAP 315

\* COMPLETE NEW SCHEDULE

Item Number	Pay Item Description	Unit of Measure	Quantity	x	Unit Price	=	Total Price
X0321991	CHANNEL CLEANING	FOOT	605.000				
X0323830	DRAINAGE SCUPPR DS-11	EACH	4.000				
X0323988	TEMP SOIL RETEN SYSTM	SQ FT	706.000				
X0325581	MAN T A 7 DIA SPL	EACH	3.000				
X0488100	REM EX SEPTIC TANK	EACH	2.000				
X2510630	HD EROS CONTR BLANKET	SQ YD	1,406.000				
X3550210	BIT BC SUPER 5 1/2	SQ YD	1,492.000				
X3550500	BIT BC SUPER 8	SQ YD	1,636.000				
X4066424	BC SC SUPER "D" N50	TON	1,383.000				
X4066526	P BCSC SUPER "D" N70	TON	170.000				
X4073146	B C PVT FD SUP 13.25	SQ YD	103,663.000				
X5011100	FOUNDATION REM	EACH	2.000				
X5020501	UNWAT STR EX PROT L1	EACH	1.000				
X5020502	UNWAT STR EX PROT L2	EACH	1.000				
X5020503	UNWAT STR EX PROT L3	EACH	1.000				

ILLINOIS DEPARTMENT OF TRANSPORTATION  
 SCHEDULE OF PRICES  
 CONTRACT  
 NUMBER - 68206

State Job # - C-94-014-02  
 PPS NBR - 4-44400-0100  
 County Name - HANCOCK- MCDONOUGH-  
 Code - 67 - 109 -  
 District - 4 - 4 -  
 Section Number - (34-6,55-1)

Project Number  
 ACNHF-0315/047/

Route  
 FAP 315

\* COMPLETE NEW SCHEDULE

Item Number	Pay Item Description	Unit of Measure	Quantity	x	Unit Price	=	Total Price
X5020504	UNWAT STR EX PROT L4	EACH	1.000				
X6063600	COMB CC&G TM4.24	FOOT	263.000				
X6064201	COMB CC&G TM4.06	FOOT	15.000				
X8305410	LT P S G 45MH T MT-TW	EACH	1.000				
Z0000990	AGG FOR TEMP ACCESS	TON	1,358.000				
Z0002600	BAR SPLICERS	EACH	740.000				
Z0005300	BOX CUL TO BE CLEANED	EACH	1.000				
Z0007601	BLDG REMOV NO 1	L SUM	1.000				
Z0007602	BLDG REMOV NO 2	L SUM	1.000				
Z0007603	BLDG REMOV NO 3	L SUM	1.000				
Z0007604	BLDG REMOV NO 4	L SUM	1.000				
Z0007606	BLDG REMOV NO 6	L SUM	1.000				
Z0007607	BLDG REMOV NO 7	L SUM	1.000				
Z0007608	BLDG REMOV NO 8	L SUM	1.000				
Z0007609	BLDG REMOV NO 9	L SUM	1.000				

ILLINOIS DEPARTMENT OF TRANSPORTATION  
 SCHEDULE OF PRICES  
 CONTRACT  
 NUMBER - 68206

State Job # - C-94-014-02  
 PPS NBR - 4-44400-0100  
 County Name - HANCOCK- MCDONOUGH-  
 Code - 67 - 109 -  
 District - 4 - 4 -  
 Section Number - (34-6,55-1)

Project Number  
 ACNHF-0315/047/

Route  
 FAP 315

\* COMPLETE NEW SCHEDULE

Item Number	Pay Item Description	Unit of Measure	Quantity	x	Unit Price	=	Total Price
Z0007610	BLDG REMOV NO 10	L SUM	1.000				
Z0007611	BLDG REMOV NO 11	L SUM	1.000				
Z0007612	BLDG REMOV NO 12	L SUM	1.000				
Z0007613	BLDG REMOV NO 13	L SUM	1.000				
Z0007614	BLDG REMOV NO 14	L SUM	1.000				
Z0007615	BLDG REMOV NO 15	L SUM	1.000				
Z0007616	BLDG REMOV NO 16	L SUM	1.000				
Z0007617	BLDG REMOV NO 17	L SUM	1.000				
Z0008224	DRIL SHAFT/SOIL 24	FOOT	193.000				
Z0008242	DRIL SHAFT/SOIL 42	FOOT	383.000				
Z0008248	DRIL SHAFT/SOIL 48	FOOT	174.000				
Z0008318	DRIL SHAFT/ROCK 18	FOOT	47.000				
Z0008336	DRIL SHAFT/ROCK 36	FOOT	234.000				
Z0008342	DRIL SHAFT/ROCK 42	FOOT	228.000				
Z0013798	CONSTRUCTION LAYOUT	L SUM	1.000				

ILLINOIS DEPARTMENT OF TRANSPORTATION  
 SCHEDULE OF PRICES  
 CONTRACT  
 NUMBER - 68206

State Job # - C-94-014-02  
 PPS NBR - 4-44400-0100  
 County Name - HANCOCK- MCDONOUGH-  
 Code - 67 - 109 -  
 District - 4 - 4 -  
 Section Number - (34-6,55-1)

Project Number  
 ACNHF-0315/047/

Route  
 FAP 315

\* COMPLETE NEW SCHEDULE

Item Number	Pay Item Description	Unit of Measure	Quantity	x	Unit Price	=	Total Price
Z0023900	FILL EXIST WELLS	EACH	6.000				
Z0026305	FUR & MAIN AUTO VEH	CAL MO	24.000				
Z0049801	R&D FRIABL ASB BLD 1	L SUM	1.000				
Z0049901	R&D NON-FR ASB BLD 1	L SUM	1.000				
Z0049904	R&D NON-FR ASB BLD 4	L SUM	1.000				
Z0049909	R&D NON-FR ASB BLD 9	L SUM	1.000				
Z0054500	ROCK FILL	TON	186.000				
Z0054505	ROCK FILL REPLACE	TON	1,099.000				
Z0056100	SAND DRAINAGE BLANKET	CU YD	28,910.000				
Z0065100	SETTLEMENT PLATFORMS	EACH	4.000				
Z0076600	TRAINEES	HOURL	1,500.000		0.800		1,200.000
20100110	TREE REMOV 6-15	UNIT	1,703.000				
20100210	TREE REMOV OVER 15	UNIT	1,887.000				
20100500	TREE REMOV ACRES	ACRE	10.000				
20200100	EARTH EXCAVATION	CU YD	570,670.000				

ILLINOIS DEPARTMENT OF TRANSPORTATION  
 SCHEDULE OF PRICES  
 CONTRACT  
 NUMBER - 68206

State Job # - C-94-014-02  
 PPS NBR - 4-44400-0100  
 County Name - HANCOCK- MCDONOUGH-  
 Code - 67 - 109 -  
 District - 4 - 4 -  
 Section Number - (34-6,55-1)

Project Number  
 ACNHF-0315/047/

Route  
 FAP 315

\* COMPLETE NEW SCHEDULE

Item Number	Pay Item Description	Unit of Measure	Quantity	x	Unit Price	=	Total Price
20200200	ROCK EXCAVATION	CU YD	177,965.000				
20201200	REM & DISP UNS MATL	CU YD	939.000				
20600110	GRAN EMBANK SPEC	TON	3,483.000				
20700400	POROUS GRAN EMB SPEC	CU YD	405.000				
21101505	TOPSOIL EXC & PLAC	CU YD	33,855.000				
21301052	EXPLOR TRENCH 52	FOOT	32,500.000				
25000210	SEEDING CL 2A	ACRE	36.750				
25000312	SEEDING CL 4A	ACRE	45.750				
25000322	SEEDING CL 5A	ACRE	45.750				
25000400	NITROGEN FERT NUTR	POUND	7,425.000				
25000500	PHOSPHORUS FERT NUTR	POUND	7,425.000				
25000600	POTASSIUM FERT NUTR	POUND	7,425.000				
25100105	MULCH METHOD 1	ACRE	100.000				
25100115	MULCH METHOD 2	ACRE	82.500				
25100630	EROSION CONTR BLANKET	SQ YD	35,249.000				

ILLINOIS DEPARTMENT OF TRANSPORTATION  
 SCHEDULE OF PRICES  
 CONTRACT  
 NUMBER - 68206

State Job # - C-94-014-02  
 PPS NBR - 4-44400-0100  
 County Name - HANCOCK- MCDONOUGH-  
 Code - 67 - 109 -  
 District - 4 - 4 -  
 Section Number - (34-6,55-1)

Project Number  
 ACNHF-0315/047/

Route  
 FAP 315

\* COMPLETE NEW SCHEDULE

Item Number	Pay Item Description	Unit of Measure	Quantity	x	Unit Price	=	Total Price
28000250	TEMP EROS CONTR SEED	POUND	20,000.000				
28000300	TEMP DITCH CHECKS	EACH	229.000				
28000400	PERIMETER EROS BAR	FOOT	3,170.000				
28000500	INLET & PIPE PROTECT	EACH	47.000				
28001000	AGGREGATE - EROS CONT	TON	4.800				
28100109	STONE RIPRAP CL A5	SQ YD	5,334.000				
28100205	STONE RIPRAP CL A3	TON	1,009.000				
28100207	STONE RIPRAP CL A4	TON	438.400				
28100209	STONE RIPRAP CL A5	TON	3,012.200				
28100225	STONE RIPRAP CL B3	TON	9,995.100				
28101700	RIPRAP SPL	TON	274.100				
28200200	FILTER FABRIC	SQ YD	24,838.000				
28300400	AGGREGATE DITCH	TON	120.100				
28500100	FAB FORM CONC REV MAT	SQ YD	1,033.300				
30200650	PROCESS MOD SOIL 12	SQ YD	138,054.000				



ILLINOIS DEPARTMENT OF TRANSPORTATION  
 SCHEDULE OF PRICES  
 CONTRACT  
 NUMBER - 68206

State Job # - C-94-014-02  
 PPS NBR - 4-44400-0100  
 County Name - HANCOCK- MCDONOUGH-  
 Code - 67 - 109 -  
 District - 4 - 4 -  
 Section Number - (34-6,55-1)

Project Number  
 ACNHF-0315/047/

Route  
 FAP 315

\* COMPLETE NEW SCHEDULE

Item Number	Pay Item Description	Unit of Measure	Quantity	x	Unit Price	=	Total Price
30201050	PROCESS MOD SOIL 20	SQ YD	4,821.000				
30201250	PROCESS MOD SOIL 24	SQ YD	8,592.000				
30201500	LIME	TON	3,272.000				
31100910	SUB GRAN MAT A 12	SQ YD	14,339.000				
31101200	SUB GRAN MAT B 4	SQ YD	1,492.000				
31101900	SUB GRAN MAT C	TON	22,254.000				
35102000	AGG BASE CSE B 8	SQ YD	12,442.000				
40200500	AGG SURF CSE A 6	SQ YD	1,259.000				
40200700	AGG SURF CSE A 8	SQ YD	9,506.000				
40300200	BIT MATLS PR CT	TON	32.700				
40300400	BIT MATLS C&S CT	TON	98.200				
40300500	COVER COAT AGG	TON	408.000				
40300600	SEAL COAT AGG	TON	204.000				
40600200	BIT MATLS PR CT	TON	72.200				
40600300	AGG PR CT	TON	104.000				

ILLINOIS DEPARTMENT OF TRANSPORTATION  
 SCHEDULE OF PRICES  
 CONTRACT  
 NUMBER - 68206

State Job # - C-94-014-02  
 PPS NBR - 4-44400-0100  
 County Name - HANCOCK- MCDONOUGH-  
 Code - 67 - 109 -  
 District - 4 - 4 -  
 Section Number - (34-6,55-1)

Project Number  
 ACNHF-0315/047/

Route  
 FAP 315

\* COMPLETE NEW SCHEDULE

Item Number	Pay Item Description	Unit of Measure	Quantity	x	Unit Price	=	Total Price
40600895	CONSTRUC TEST STRIP	EACH	3.000				
40600980	BIT SURF REM BUTT JT	SQ YD	107.000				
40600990	TEMPORARY RAMP	SQ YD	260.000				
42001165	BR APPR PAVT	SQ YD	552.000				
42001300	PROTECTIVE COAT	SQ YD	292.000				
44000100	PAVEMENT REM	SQ YD	51,372.000				
44000400	GUTTER REM	FOOT	528.000				
44000500	COMB CURB GUTTER REM	FOOT	94.000				
44002800	ISLAND PAVEMENT REM	SQ YD	12.000				
44300200	STRIP REF CR CON TR	FOOT	453.000				
48101200	AGGREGATE SHLDS B	TON	12,732.000				
48202600	BIT SHLD SUPER 8	SQ YD	53,196.000				
50100300	REM EXIST STRUCT N1	EACH	1.000				
50100400	REM EXIST STRUCT N2	EACH	1.000				
50100500	REM EXIST STRUCT N3	EACH	1.000				

ILLINOIS DEPARTMENT OF TRANSPORTATION  
 SCHEDULE OF PRICES  
 CONTRACT  
 NUMBER - 68206

State Job # - C-94-014-02  
 PPS NBR - 4-44400-0100  
 County Name - HANCOCK- MCDONOUGH-  
 Code - 67 - 109 -  
 District - 4 - 4 -  
 Section Number - (34-6,55-1)

Project Number  
 ACNHF-0315/047/

Route  
 FAP 315

\* COMPLETE NEW SCHEDULE

Item Number	Pay Item Description	Unit of Measure	Quantity	x	Unit Price	=	Total Price
50100600	REM EXIST STRUCT N4	EACH	1.000				
50100700	REM EXIST STRUCT N5	EACH	1.000				
50100800	REM EXIST STRUCT N6	EACH	1.000				
50100900	REM EXIST STRUCT N7	EACH	1.000				
50101000	REM EXIST STRUCT N8	EACH	1.000				
50101100	REM EXIST STRUCT N9	EACH	1.000				
50101200	REM EXIST STRUCT N10	EACH	1.000				
50102400	CONC REM	CU YD	48.100				
50105220	PIPE CULVERT REMOV	FOOT	1,256.000				
50200100	STRUCTURE EXCAVATION	CU YD	431.000				
50300150	NEOPRENE EXPAN JT 2	FOOT	108.500				
50300155	NEOPRENE EXP JT 2 1/2	FOOT	108.500				
50300225	CONC STRUCT	CU YD	708.200				
50300255	CONC SUP-STR	CU YD	735.400				
50300260	BR DECK GROOVING	SQ YD	2,201.000				

ILLINOIS DEPARTMENT OF TRANSPORTATION  
 SCHEDULE OF PRICES  
 CONTRACT  
 NUMBER - 68206

State Job # - C-94-014-02  
 PPS NBR - 4-44400-0100  
 County Name - HANCOCK- MCDONOUGH-  
 Code - 67 - 109 -  
 District - 4 - 4 -  
 Section Number - (34-6,55-1)

Project Number  
 ACNHF-0315/047/

Route  
 FAP 315

\* COMPLETE NEW SCHEDULE

Item Number	Pay Item Description	Unit of Measure	Quantity	x	Unit Price	=	Total Price
50300265	SEAL COAT CONC	CU YD	1,577.300				
50300300	PROTECTIVE COAT	SQ YD	2,201.000				
50300310	ELAST BEARING ASSY T1	EACH	36.000				
50300320	ELAST BEARING ASSY T2	EACH	12.000				
50401105	F & E P P CON I-BM 54	FOOT	2,932.000				
50500405	F & E STRUCT STEEL	POUND	1,100.000				
50800105	REINFORCEMENT BARS	POUND	177,060.000				
50800205	REINF BARS, EPOXY CTD	POUND	279,940.000				
51500100	NAME PLATES	EACH	3.000				
54001000	BOX CUL END SECT	EACH	2.000				
54002080	EXPAN BOLTS 3/4 X 18	EACH	110.000				
54003000	CONC BOX CUL	CU YD	300.700				
54010606	PCBC 6X6	FOOT	283.000				
542A0229	P CUL CL A 1 24	FOOT	109.000				
542A0235	P CUL CL A 1 30	FOOT	43.000				

ILLINOIS DEPARTMENT OF TRANSPORTATION  
 SCHEDULE OF PRICES  
 CONTRACT  
 NUMBER - 68206

State Job # - C-94-014-02  
 PPS NBR - 4-44400-0100  
 County Name - HANCOCK- MCDONOUGH-  
 Code - 67 - 109 -  
 District - 4 - 4 -  
 Section Number - (34-6,55-1)

Project Number  
 ACNHF-0315/047/

Route  
 FAP 315

\* COMPLETE NEW SCHEDULE

Item Number	Pay Item Description	Unit of Measure	Quantity	x	Unit Price	=	Total Price
542A0259	P CUL CL A 1 54	FOOT	95.000				
542A1069	P CUL CL A 2 24	FOOT	938.000				
542A1081	P CUL CL A 2 36	FOOT	234.000				
542A1093	P CUL CL A 2 48	FOOT	349.000				
542A1909	P CUL CL A 3 24	FOOT	252.000				
542A1933	P CUL CL A 3 48	FOOT	98.000				
542A2761	P CUL CL A 4 36	FOOT	93.000				
542A2779	P CUL CL A 4 54	FOOT	118.000				
542D0220	P CUL CL D 1 15	FOOT	170.000				
542D0223	P CUL CL D 1 18	FOOT	240.000				
542D0277	P CUL CL D 1 72	FOOT	176.000				
542D1060	P CUL CL D 2 15	FOOT	122.000				
542D1063	P CUL CL D 2 18	FOOT	127.000				
542D1069	P CUL CL D 2 24	FOOT	234.000				
542D1075	P CUL CL D 2 30	FOOT	86.000				

ILLINOIS DEPARTMENT OF TRANSPORTATION  
 SCHEDULE OF PRICES  
 CONTRACT  
 NUMBER - 68206

State Job # - C-94-014-02  
 PPS NBR - 4-44400-0100  
 County Name - HANCOCK- MCDONOUGH-  
 Code - 67 - 109 -  
 District - 4 - 4 -  
 Section Number - (34-6,55-1)

Project Number  
 ACNHF-0315/047/

Route  
 FAP 315

\* COMPLETE NEW SCHEDULE

Item Number	Pay Item Description	Unit of Measure	Quantity	x	Unit Price	=	Total Price
542D1099	P CUL CL D 2 54	FOOT	77.000				
5421A012	P CUL CL A 1 12 TEMP	FOOT	52.000				
5421A015	P CUL CL A 1 15 TEMP	FOOT	178.000				
5421A018	P CUL CL A 1 18 TEMP	FOOT	58.000				
5421A024	P CUL CL A 1 24 TEMP	FOOT	118.000				
5421D012	P CUL CL D 1 12 TEMP	FOOT	72.000				
5421D015	P CUL CL D 1 15 TEMP	FOOT	42.000				
5421D018	P CUL CL D 1 18 TEMP	FOOT	36.000				
5421D024	P CUL CL D 1 24 TEMP	FOOT	68.000				
54213450	END SECTIONS 15	EACH	10.000				
54213453	END SECTIONS 18	EACH	14.000				
54213459	END SECTIONS 24	EACH	6.000				
54213465	END SECTIONS 30	EACH	2.000				
54213489	END SECTIONS 54	EACH	2.000				
54213507	END SECTIONS 72	EACH	4.000				

ILLINOIS DEPARTMENT OF TRANSPORTATION  
 SCHEDULE OF PRICES  
 CONTRACT  
 NUMBER - 68206

State Job # - C-94-014-02  
 PPS NBR - 4-44400-0100  
 County Name - HANCOCK- MCDONOUGH-  
 Code - 67 - 109 -  
 District - 4 - 4 -  
 Section Number - (34-6,55-1)

Project Number  
 ACNHF-0315/047/

Route  
 FAP 315

\* COMPLETE NEW SCHEDULE

Item Number	Pay Item Description	Unit of Measure	Quantity	x	Unit Price	=	Total Price
54213669	PRC FLAR END SEC 24	EACH	14.000				
54213675	PRC FLAR END SEC 30	EACH	1.000				
54213681	PRC FLAR END SEC 36	EACH	2.000				
54213693	PRC FLAR END SEC 48	EACH	4.000				
54213699	PRC FLAR END SEC 54	EACH	2.000				
5422A030	P CUL CL A 2 30 TEMP	FOOT	84.000				
5422D018	P CUL CL D 2 18 TEMP	FOOT	74.000				
5422D042	P CUL CL D 2 42 TEMP	FOOT	25.000				
5422D048	P CUL CL D 2 48 TEMP	FOOT	68.000				
5422D054	P CUL CL D 2 54 TEMP	FOOT	46.000				
5422D060	P CUL CL D 2 60 TEMP	FOOT	60.000				
54248515	CONCRETE COLLAR	EACH	2.000				
58700200	BRIDGE SEAT SEALER	SQ FT	656.000				
59100100	GEOCOMPOSITE WALL DR	SQ YD	166.000				
60100060	CONC HDWL FOR P DRAIN	EACH	179.000				

ILLINOIS DEPARTMENT OF TRANSPORTATION  
 SCHEDULE OF PRICES  
 CONTRACT  
 NUMBER - 68206

State Job # - C-94-014-02  
 PPS NBR - 4-44400-0100  
 County Name - HANCOCK- MCDONOUGH-  
 Code - 67 - 109 -  
 District - 4 - 4 -  
 Section Number - (34-6,55-1)

Project Number  
 ACNHF-0315/047/

Route  
 FAP 315

\* COMPLETE NEW SCHEDULE

Item Number	Pay Item Description	Unit of Measure	Quantity	x	Unit Price	=	Total Price
60107600	PIPE UNDERDRAINS 4	FOOT	69,399.000				
60108100	PIPE UNDERDRAIN 4 SP	FOOT	2,536.000				
60109580	P UNDR FOR STRUCT 4	FOOT	269.000				
60220200	MAN TA 4 DIA	EACH	5.000				
60221100	MAN TA 5 DIA T1F CL	EACH	1.000				
60222900	MAN TA 5 DIA	EACH	5.000				
60224200	MAN TA SPL 6D T1F CL	EACH	1.000				
60240395	INLETS TB	EACH	1.000				
60246905	MED INLET (604106) SP	EACH	14.000				
60600097	CLASS SI CONC OUT SPL	CU YD	11.000				
60602600	CONC GUTTER TA MOD	FOOT	496.000				
60618300	CONC MEDIAN SURF 4	SQ FT	108.000				
61100605	MISC CONCRETE	CU YD	50.000				
63000000	SPBGR TY A	FOOT	1,225.000				
63100085	TRAF BAR TERM T6	EACH	4.000				



ILLINOIS DEPARTMENT OF TRANSPORTATION  
 SCHEDULE OF PRICES  
 CONTRACT  
 NUMBER - 68206

State Job # - C-94-014-02  
 PPS NBR - 4-44400-0100  
 County Name - HANCOCK- MCDONOUGH-  
 Code - 67 - 109 -  
 District - 4 - 4 -  
 Section Number - (34-6,55-1)

Project Number  
 ACNHF-0315/047/

Route  
 FAP 315

\* COMPLETE NEW SCHEDULE

Item Number	Pay Item Description	Unit of Measure	Quantity	x	Unit Price	=	Total Price
63100167	TR BAR TRM T1 SPL TAN	EACH	4.000				
63200310	GUARDRAIL REMOV	FOOT	888.000				
63500105	DELINEATORS	EACH	114.000				
64200105	SHOULDER RUMBLE STRIP	FOOT	65,762.000				
66411900	TEMP FENCE	FOOT	3,925.000				
66500105	WOV W FENCE 4	FOOT	7,770.000				
66600105	FUR ERECT ROW MARKERS	EACH	97.000				
66700205	PERM SURV MKRS T1	EACH	9.000				
66700305	PERM SURV MKRS T2	EACH	30.000				
66700605	PERM SURVEY TIES	EACH	16.000				
67000400	ENGR FIELD OFFICE A	CAL MO	24.000				
67000600	ENGR FIELD LAB	CAL MO	24.000				
67100100	MOBILIZATION	L SUM	1.000				
70100450	TRAF CONT-PROT 701201	L SUM	1.000				
70100460	TRAF CONT-PROT 701306	L SUM	1.000				

ILLINOIS DEPARTMENT OF TRANSPORTATION  
 SCHEDULE OF PRICES  
 CONTRACT  
 NUMBER - 68206

State Job # - C-94-014-02  
 PPS NBR - 4-44400-0100  
 County Name - HANCOCK- MCDONOUGH-  
 Code - 67 - 109 -  
 District - 4 - 4 -  
 Section Number - (34-6,55-1)

Project Number  
 ACNHF-0315/047/

Route  
 FAP 315

\* COMPLETE NEW SCHEDULE

Item Number	Pay Item Description	Unit of Measure	Quantity	x	Unit Price	=	Total Price
70100500	TRAF CONT-PROT 701326	L SUM	1.000				
70100700	TRAF CONT-PROT 701406	L SUM	1.000				
70101000	TC-PROT 701331 SPL	EACH	1.000				
70101210	TC-PROT 701416 SPL	EACH	2.000				
70101830	TRAF CONT-PROT BLR 21	L SUM	1.000				
70103815	TR CONT SURVEILLANCE	CAL DA	120.000				
70300100	SHORT-TERM PAVT MKING	FOOT	2,942.000				
70300220	TEMP PVT MK LINE 4	FOOT	16,860.000				
70300625	TEMP PT PVT M LINE 4	FOOT	73,320.000				
70301000	WORK ZONE PAVT MK REM	SQ FT	24,966.000				
70500100	TEMP SPBGR TY A	FOOT	212.500				
70500615	TEMP TR BAR TERM T1	EACH	2.000				
70500665	TEMP TR BAR TERM T6	EACH	2.000				
72000100	SIGN PANEL T1	SQ FT	813.000				
72000200	SIGN PANEL T2	SQ FT	254.000				

ILLINOIS DEPARTMENT OF TRANSPORTATION  
 SCHEDULE OF PRICES  
 CONTRACT  
 NUMBER - 68206

State Job # - C-94-014-02  
 PPS NBR - 4-44400-0100  
 County Name - HANCOCK- MCDONOUGH-  
 Code - 67 - 109 -  
 District - 4 - 4 -  
 Section Number - (34-6,55-1)

Project Number  
 ACNHF-0315/047/

Route  
 FAP 315

\* COMPLETE NEW SCHEDULE

Item Number	Pay Item Description	Unit of Measure	Quantity	x	Unit Price	=	Total Price
72000300	SIGN PANEL T3	SQ FT	448.000				
72800100	TELES STL SIN SUPPORT	FOOT	14.000				
73000100	WOOD SIN SUPPORT	FOOT	1,937.500				
73100100	BASE TEL STL SIN SUPP	EACH	1.000				
78003130	PREF PL PM TB LINE 6	FOOT	9,323.000				
78005100	EPOXY PVT MK LTR-SYM	SQ FT	639.600				
78005110	EPOXY PVT MK LINE 4	FOOT	74,572.000				
78005140	EPOXY PVT MK LINE 8	FOOT	3,205.000				
78005150	EPOXY PVT MK LINE 12	FOOT	347.000				
78005180	EPOXY PVT MK LINE 24	FOOT	75.000				
78100100	RAISED REFL PAVT MKR	EACH	538.000				
78100105	RAISED REF PVT MKR BR	EACH	6.000				
78200410	GUARDRAIL MKR TYPE A	EACH	24.000				
78201000	TERMINAL MARKER - DA	EACH	6.000				
80400100	ELECT SERV INSTALL	EACH	1.000				



STABILIZED SUBBASE AND BITUMINOUS SHOULDERS SUPERPAVE (BDE)..... 119

STEEL PLATE BEAM GUARDRAIL (BDE) ..... 125

SUBCONTRACTOR MOBILIZATION PAYMENTS (BDE) ..... 126

SUBGRADE PREPARATION (BDE) ..... 126

SUPERPAVE BITUMINOUS CONCRETE MIXTURES (BDE)..... 126

SURFACE TESTING OF PAVEMENTS (BDE) ..... 132

SUSPENSION OF SLIPFORMED PARAPETS (BDE) ..... 138

TEMPORARY EROSION CONTROL (BDE) ..... 138

TRAFFIC BARRIER TERMINALS (BDE) ..... 140

TRAFFIC CONTROL DEFICIENCY DEDUCTION (BDE) ..... 140

TRAINING SPECIAL PROVISIONS ..... 141

TRUCK BED RELEASE AGENT (BDE) ..... 143

WEIGHT CONTROL DEFICIENCY DEDUCTION..... 144

WORK ZONE SPEED LIMIT SIGNS (BDE) ..... 145

WORK ZONE TRAFFIC CONTROL DEVICES (BDE) ..... 146

STEEL COST ADJUSTMENT (BDE) (RETURN WITH BID)..... 147

STORM WATER POLLUTION PREVENTION PLAN..... 151

BITUMINOUS MATERIALS COST ADJUSTMENTS (BDE) (RETURN FORM WITH BID)..... 161

404 PERMIT..... 164

BUILDING REMOVAL - CASE I (NON-FRIABLE AND FRIABLE ASBESTOS ABATEMENT) (BDE) .... 184

BUILDING REMOVAL - CASE II (NON-FRIABLE ASBESTOS ABATEMENT) (BDE) ..... 197

BUILDING REMOVAL - CASE IV (NO ASBESTOS) (BDE)..... 212

Revised 11/03/2006

**BUILDING REMOVAL - CASE I (NON-FRIABLE AND FRIABLE ASBESTOS ABATEMENT)  
 (BDE)**

Effective: September 1, 1990

Revised: January 1, 2007

**BUILDING REMOVAL:** This work shall consist of the removal and disposal of one (1) building, together with all foundations, retaining walls, and piers, down to a plane 1 ft (300 mm) below the ultimate or existing grade in the area and also all incidental and collateral work necessary to complete the removal of the building(s) in a manner approved by the Engineer. Any holes, such as basements, shall be filled with a suitable granular material. The building(s) are identified as follows:

<b>Bldg. No.</b>	<b>Parcel No.</b>	<b>Location</b>	<b>Description</b>
1	408V003	3000 Block of US Route 136 Tennessee, IL 62374  (Right Station 1422+33)	20' x 32' concrete block and metal roof structure. Attached 20' x 26' lean-to garage.

**Discontinuance of Utilities:** The Contractor shall arrange for the discontinuance of all utility services that serve the building(s) according to the respective requirements and regulations of the City, County, or utility companies involved. The Contractor shall disconnect and seal, in an approved manner, all service outlets that serve any building(s) he/she is to remove.

**Signs:** Immediately upon execution of the contract and prior to the wrecking of any structures, the Contractor shall be required to paint or stencil, in contrasting colors of an oil base paint, on all four sides of each residence and two opposite sides of other structures, the following sign:

PROPERTY ACQUIRED FOR  
 HIGHWAY CONSTRUCTION  
 TO BE DEMOLISHED BY THE

VANDALS WILL BE PROSECUTED

The signs shall be positioned in a prominent location on the structure so that they can be easily seen and read and at a sufficient height to prevent defacing. The Contractor shall not paint signs nor start demolition of any building(s) prior to the time that the State becomes the owner of the respective building(s).

All friable asbestos shall be removed from the building(s) prior to demolition. The Contractor has the option of removing the non-friable asbestos prior to demolition or demolishing the building(s) with the non-friable asbestos in place. Refer to the Special Provisions titled "Asbestos Abatement (General Conditions)", "Removal and Disposal of Friable Asbestos Building No. 1", and "Removal and Disposal of Non-Friable Asbestos Building No. 1" contained herein.

**Basis of Payment:** This work will be paid for at the contract lump sum unit price for BUILDING REMOVAL, numbers as listed above, which price shall be payment in full for complete removal of the buildings and structures, including any necessary backfilling material as specified herein.

Added 11/03/2006

The lump sum unit price(s) for this work shall represent the cost of demolition and disposal assuming all asbestos, friable and non-friable, is removed prior to demolition. Any salvage value shall be reflected in the contract unit price for this item.

**EXPLANATION OF BIDDING TERMS:** Three separate contract unit price items have been established for the removal of each building. They are:

1. BUILDING REMOVAL NO. 1
2. REMOVAL AND DISPOSAL OF FRIABLE ASBESTOS, BUILDING NO. 1
3. REMOVAL AND DISPOSAL OF NON-FRIABLE ASBESTOS, BUILDING NO. 1

The Contractor shall have two options available for the removal and disposal of the non-friable asbestos.

The pay item for removal and disposal of non-friable asbestos will not be deleted regardless of the option chosen by the Contractor.

**ASBESTOS ABATEMENT (GENERAL CONDITIONS):** This work consists of the removal and disposal of friable and non-friable asbestos from the building(s) to be demolished. All work shall be done according to the requirements of the U.S. Environmental Protection Agency (USEPA), the Illinois Environmental Protection Agency (IEPA), the Occupational Safety and Health Administration (OSHA), the Special Provisions for "Removal and Disposal of Friable Asbestos, Building No. 1" and "Removal and Disposal of Non-Friable Asbestos, Building No. 1", and as outlined herein.

Sketches indicating the location of Asbestos Containing Material (ACM) are included in the proposal on page 192. Also refer to the Materials Description Table on page 193 for a brief description and location of the various materials. Also included is a Materials Quantities Table on page 193. This table states whether the ACM is friable or non-friable and gives the approximate quantity. The quantities are given only for information and it shall be the Contractor's responsibility to determine the exact quantities prior to submitting his/her bid.

The work involved in the removal and disposal of friable asbestos, and non-friable asbestos if done prior to demolition, shall be performed by a Contractor or Sub-Contractor prequalified with the Illinois Capital Development Board.

The Contractor shall provide a shipping manifest, similar to the one shown on page 194, to the Engineer for the disposal of all ACM wastes.

**Permits:** The Contractor shall apply for permit(s) in compliance with applicable regulations of the Illinois Environmental Protection Agency. Any and all other permits required by other federal, state, or local agencies for carrying on the work shall be the responsibility of the Contractor. Copies of these permits shall be sent to the district office and the Engineer.

Added 11/03/2006

Notifications: The "Demolition/Renovation Notice" form, which can be obtained from the IEPA office, shall be completed and submitted to the address listed below at least ten days prior to commencement of any asbestos removal or demolition activity. Separate notices shall be sent for the asbestos removal work and the building demolition if they are done as separate operations.

Asbestos Demolition/Renovation Coordinator  
Illinois Environmental Protection Agency  
Division of Air Pollution Control  
P. O. Box 19276  
Springfield, Illinois 62794-9276  
(217)785-1743

Notices shall be updated if there is a change in the starting date or the amount of asbestos changes by more than 20 percent.

Submittals:

- A. All submittals and notices shall be made to the Engineer, except where otherwise specified herein.
- B. Submittals that shall be made prior to start of work:
  1. Submittals required under Asbestos Abatement Experience.
  2. Submit documentation indicating that all employees have had medical examinations and instruction on the hazards of asbestos exposure, on use and fitting of respirators, on protective dress, on use of showers, on entry and exit from work areas, and on all aspects of work procedures and protective measures as specified in Worker Protection Procedures.
  3. Submit manufacturer's certification stating that vacuums, ventilation equipment, and other equipment required to contain airborne fibers conform to ANSI 29.2.
  4. Submit to the Engineer the brand name, manufacturer, and specification of all sealants or surfactants to be used. Testing under existing conditions will be required at the direction of the Engineer.
  5. Submit proof that all required permits, site locations, and arrangements for transport and disposal of asbestos-containing or asbestos-contaminated materials, supplies, and the like have been obtained (i.e., a letter of authorization to utilize designated landfill).
  6. Submit a list of penalties, including liquidated damages, incurred through non-compliance with asbestos abatement project specifications.

Added 11/03/2006



7. Submit a detailed plan of the procedures proposed for use in complying with the requirements of this specification. Include in the plan the location and layout of decontamination units, the sequencing of work, the respiratory protection plan to be used during this work, a site safety plan, a disposal plan including the location of an approved disposal site, and a detailed description of the methods to be used to control pollution. The plan shall be submitted to the Engineer prior to the start of work.
8. Submit proof of written notification and compliance with Paragraph "Notifications".

C. Submittals that shall be made upon completion of abatement work:

1. Submit copies of all waste chain-of-custodies, trip tickets, and disposal receipts for all asbestos waste materials removed from the work area;
2. Submit daily copies of work site entry logbooks with information on worker and visitor access;
3. Submit logs documenting filter changes on respirators, HEPA vacuums, negative pressure ventilation units, and other engineering controls; and
4. Submit results of any bulk material analysis and air sampling data collected during the course of the abatement including results of any on-site testing by any federal, state, or local agency.

Certificate of Insurance:

- A. The Contractor shall document general liability insurance for personal injury, occupational disease and sickness or death, and property damage.
- B. The Contractor shall document current Workmen's Compensation Insurance coverage.
- C. The Contractor shall supply insurance certificates as specified by the Department.

Asbestos Abatement Experience:

- A. Company Experience: Prior to starting work, the Contractor shall supply evidence that he/she has been prequalified with the Illinois Capital Development Board and that he/she has been included on the Illinois Department of Public Health's list of approved Contractors.

B. Personnel Experience:

1. For Superintendent, the Contractor shall supply:
  - a. Evidence of knowledge of applicable regulations in safety and environmental protection is required as well as training in asbestos abatement as evidenced by

Added 11/03/2006

the successful completion of a training course in supervision of asbestos abatement as specified in 40 CFR 763, Subpart E, Appendix C, EPA Model Contractor Accreditation Plan. A copy of the certificate of successful completion shall be provided to the Engineer prior to the start of work.

- b. Documentation of experience with abatement work in a supervisory position as evidenced through supervising at least two asbestos abatement projects; provide names, contact, phone number, and locations of two projects in which the individual(s) has worked in a supervisory capacity.
2. For workers involved in the removal of friable and non-friable asbestos, the Contractor shall provide training as evidenced by the participation and successful completion of an accredited training course for asbestos abatement workers as specified in 40 CFR 763, Subpart E, Appendix C, EPA Model Contractor Accreditation Plan. A copy of the certificate of successful completion shall be provided to all employees who will be working on this project.

ABATEMENT AIR MONITORING: The Contractor shall comply with the following:

- A. Personal Monitoring: All personal monitoring shall be conducted per specifications listed in OSHA regulation, Title 29, Code of Federal Regulation 1926.58. All area sampling shall be conducted according to 40 CFR Part 763.90. All air monitoring equipment shall be calibrated and maintained in proper operating condition. Excursion limits shall be monitored daily. Personal monitoring is the responsibility of the Contractor. Additional personal samples may be required by the Engineer at any time during the project.
- B. Contained Work Areas for Removal of Friable Asbestos: Area samples shall be collected for the department within the work area daily. A minimum of one sample shall be taken outside of the abatement area removal operations. The Engineer will also have the option to require additional personal samples and/or clearance samples during this type of work.
- C. Interior Non-Friable Asbestos-Containing Materials: The Contractor shall perform personal air monitoring during removal of all nonfriable Transite and floor tile removal operations. The Engineer will also have the option to require additional personal samples and/or clearance samples during this type of work.
- D. Exterior Non-Friable Asbestos-Containing Materials: The Contractor shall perform personal air monitoring during removal of all nonfriable cementitious panels, piping, roofing felts, and built up roofing materials that contain asbestos.

The Contractor shall conduct down wind area sampling to monitor airborne fiber levels at a frequency of no less than three per day.

E. Air Monitoring Professional

1. All air sampling shall be conducted by a qualified Air Sampling Professional supplied by the Contractor. The Air Sampling Professional shall submit documentation of

Added 11/03/2006

successful completion of the National Institute for Occupational Safety and Health (NIOSH) course #582 - "Sampling and Evaluating Airborne Asbestos Dust".

2. Air sampling shall be conducted according to NIOSH Method 7400. The results of these tests shall be provided to the Engineer within 24 hours of the collection of air samples.

REMOVAL AND DISPOSAL OF FRIABLE ASBESTOS, BUILDING NO.1: This work consists of the removal and disposal of all friable asbestos from the building(s) prior to demolition. The work shall be done according to the Special Provision titled "Asbestos Abatement (General Conditions)" and as outlined herein.

This work will be paid for at the contract unit price per lump sum for REMOVAL AND DISPOSAL OF FRIABLE ASBESTOS, BUILDING NO. 1, as shown, which price shall include furnishing all labor, materials, equipment and services required to remove and dispose of the friable asbestos.

REMOVAL AND DISPOSAL OF NON-FRIABLE ASBESTOS, BUILDING NO. 1: The Contractor has the option of removing and disposing of the non-friable asbestos prior to demolition of the building(s) or demolishing the building(s) with the non-friable asbestos in place.

Option #1 - If the Contractor chooses to remove all non-friable asbestos prior to demolition, the work shall be done according to the Special Provision titled "Asbestos Abatement (General Conditions)".

Option #2 - If the Contractor chooses to demolish the building(s) with the non-friable asbestos in place, the following provisions shall apply:

1. Continuously wet all non-friable ACM and other building debris with water during demolition.
2. Dispose of all demolition debris as asbestos containing material by placing it in lined, covered transport haulers and placing it in an approved landfill.

This work will be paid for at the contract unit price per lump sum for REMOVAL AND DISPOSAL OF NON-FRIABLE ASBESTOS, BUILDING NO. 1, as shown.

The cost for this work shall be determined as follows:

Option #1 - Actual cost of removal and disposal of non-friable asbestos.

Option #2 - The difference in cost between removing and disposing of the building if all non-friable asbestos is left in place and removing and disposing of the building assuming all non-friable asbestos is removed prior to demolition.

The cost of removing and disposing of the building(s), assuming all asbestos, friable and non-friable is removed first, shall be represented by the pay item "BUILDING REMOVAL NO. 1".

Added 11/03/2006

Regardless of the option chosen by the Contractor, this pay item will not be deleted, nor will the pay item BUILDING REMOVAL NO. 1 be deleted.

EXAMPLE

Attached are Appendixes A - D. These appendixes are examples of the information to be included in the proposal and referred to on page 186 of the Special Provision.

Appendix A are the sketches of the building(s) noted on page 184 of the Special Provision. These sketches show the location of asbestos on each floor of the building(s).

Appendix B provides a "Material Description Table" also referred to on page 186 of the Special Provision.

Appendix C is a "Material Quantities Table" and is referred to on page 186 of the Special Provision.

Appendix D is a sample of a Shipping Manifest form referred to on page 186.

Appendix E is a sample of the building(s) identification needed on page 184.

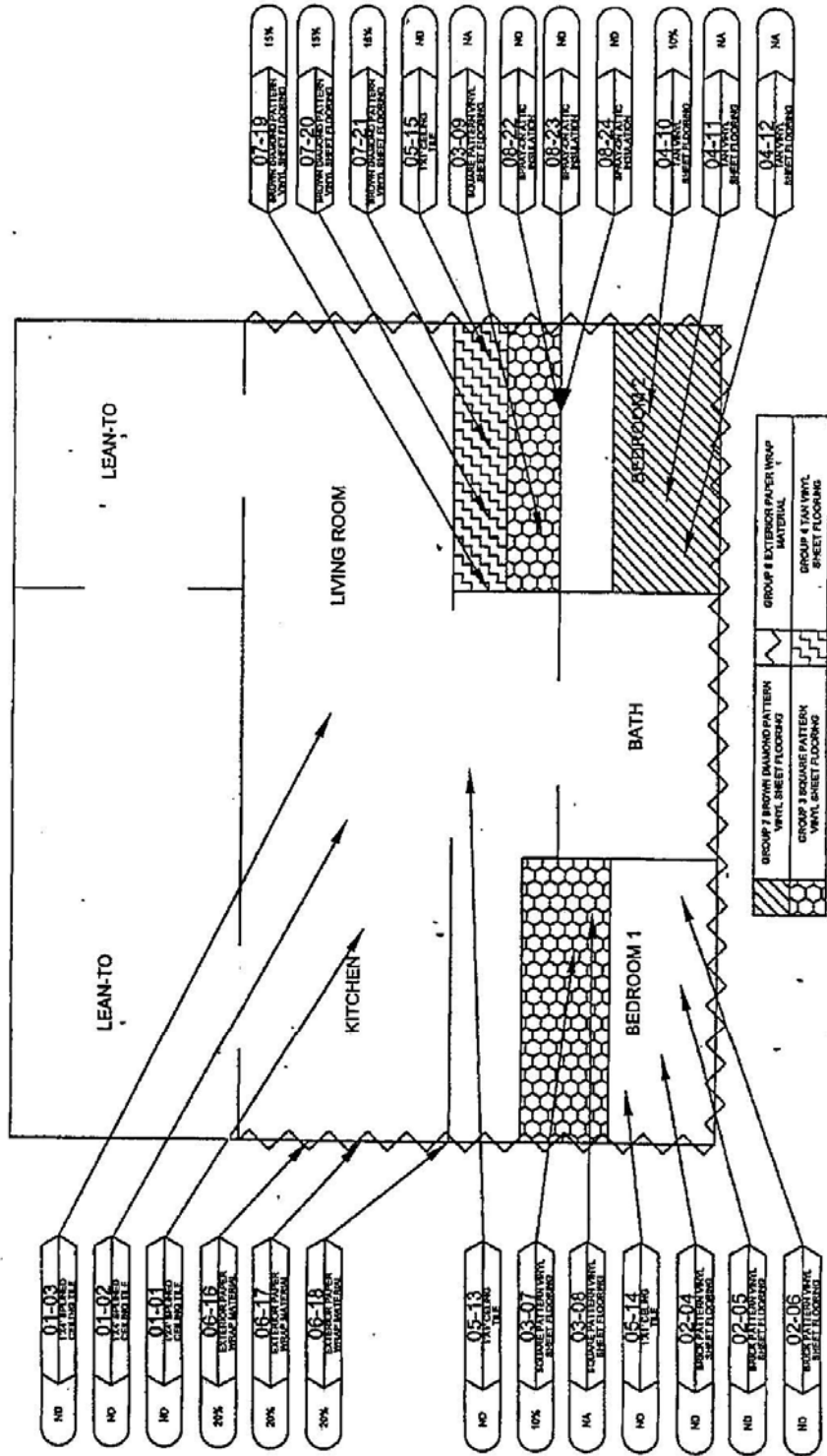
Added 11/03/2006

APPENDIX A

BUILDING DRAWINGS – ASBESTOS LOCATIONS

INDEX OF DRAWINGS

<b>Building No. 1</b>	<b>Figure 1</b>
-----------------------	-----------------



**BUILDING NO. 1 - HOUSE**

<b>PSI</b> Environmental Geotechnical Construction Consulting, Inc. 1001 N. Lincoln Street Springfield, Illinois 62761	ASBESTOS SAMPLE GROUP	SAMPLE NUMBER NUTR	SAMPLE =	NA = NOT ANALYZED N = NO = NOT DETECTED TR = TRACE	LEAD SAMPLE NUMBER NUTR	NA = NOT ANALYZED N = NO = NOT DETECTED TR = TRACE	GROUP 1 BROWN DIAMOND PATTERN VIRT. SHEET FLOORING	GROUP 2 BROWN DIAMOND PATTERN VIRT. SHEET FLOORING	GROUP 3 SQUARE PATTERN VIRT. SHEET FLOORING	GROUP 4 TAN VINYL SHEET FLOORING	GROUP 5 EXTERIOR PAPER WRAP MATERIAL	PROJECT NO. 047-5A163	SCALE NTS	DATE 10-28-06	DRAWN BY W.C. 237
	PLANS BY: TUS, JESSRO 3000 BLK ROUTE 136 TENNESSEE, ILLINOIS ILLINOIS DEPARTMENT OF TRANSPORTATION 2300 SOUTH DIRKSEN PARKWAY SPRINGFIELD, ILLINOIS 62761														

APPENDIX B

MATERIAL DESCRIPTION TABLE

Material	Percent & Type of Chrysotile	Number (If Applicable)
----------	------------------------------	------------------------

**Building No. 1: 3000 Block of US Route 136, Tennessee, IL 62374 (Right Station 1422+33)**

Material Description	% and Type of Asbestos	Location, Condition & Sample No.
Square pattern vinyl sheet flooring.	10% Chrysotile	Bedroom 1 & 2
Tan vinyl sheet flooring.	10% Chrysotile	Bedroom 2
Exterior paper wrap material.	20% Chrysotile	Below existing siding
Brown diamond pattern vinyl sheet flooring	15% Chrysotile	Bedroom 2

APPENDIX C

MATERIAL QUANTITIES TABLE

The following are approximate quantities of ACM to be removed from the building indicated. These material quantities do not indicate the cleaning required removing asbestos debris and resulting contamination from the work areas.

**Building No 1: 3000 Block of US Route 136, Tennessee, IL 62374 (Right Station 1422+33)**

<u>Material</u>	<u>Floor</u>	<u>Quantity Present</u>	<u>Friable</u>
Square pattern vinyl sheet flooring.	Bedroom 1 & 2	40 sq. ft.	No
Tan vinyl sheet flooring.	Bedroom 2	10 sq. ft.	No
Exterior paper wrap material.	Below exterior siding	800 sq. ft.	Yes
Brown diamond pattern vinyl sheet flooring.	Bedroom 2	10 sq. ft.	No

Added 11/03/2006

APPENDIX D  
 SHIPPING MANIFEST

Generator

1. Work Site Name and Mailing Address	Owner's Name	Owner's Telephone No.
2. Operator's Name and Address		Operator's Telephone No.
3. Waste Disposal Site (WDS) Name Mailing Address, and Physical Site Location		WDS Telephone No.
4. Name and Address of Responsible Agency		
5. Description of Materials		
6. Containers	No.	Type
7. Total Quantity	M <sup>3</sup>	(Yd <sup>3</sup> )
8. Special Handling Instructions and Additional Information		
9. OPERATOR'S CERTIFICATION: I hereby declare that the contents of this consignment are fully and accurately described above by proper shipping name and are classified, packed, marked, and labeled, and are in all respects in proper condition for transport by highway according to applicable international and government regulations.		
Printed/Typed Name & Title	Signature	Month Day Year

Transporter

10. Transporter 1 (Acknowledgement of Receipt of Materials)		
Printed/Typed Name & Title	Signature	Month Day Year
Address and Telephone No.		
11. Transporter 2 (Acknowledgement of Receipt of Materials)		
Printed/Typed Name & Title	Signature	Month Day Year
Address and Telephone No.		

Disposal Site

12. Discrepancy Indication Space		
13. Waste Disposal Site Owner or Operator: Certification of Receipt of Asbestos Materials Covered By This Manifest Except As Noted in Item 12		
Printed/Typed Name & Title	Signature	Month Day Year

Added 11/03/2006



APPENDIX D

INSTRUCTIONS

Waste Generator Section (Items 1-9)

1. Enter the name of the facility at which asbestos waste is generated and the address where the facility is located. In the appropriate spaces, also enter the name of the owner of the facility and the owner's phone number.
2. If a demolition or renovation, enter the name and address of the Company and authorized agent responsible for performing the asbestos removal. In the appropriate spaces, also enter the phone number of the operator.
3. Enter the name, address, and physical site location of the waste disposal site (WDS) that will be receiving the asbestos materials. In the appropriate spaces, also enter the phone number of the WDS. Enter "on-site" if the waste will be disposed of on the generator's property.
4. Provide the name and address of the local, State, or EPA Regional Office responsible for administering the asbestos NESHAP program.
5. Indicate the types of asbestos waste materials generated. If from a demolition or renovation, indicate the amount of asbestos that is
  - Friable asbestos material
  - Nonfriable asbestos material
6. Enter the number of containers used to transport the asbestos materials listed in Item 5. Also enter one of the following container codes used in transporting each type of asbestos material (specify any other type of container used if not listed below):
  - DM – Metal drums, barrels
  - DP – Plastic drums, barrels
  - BA – 6 mil plastic bags or wrapping
7. Enter the quantities of each type of asbestos material removed in units of cubic meters (cubic yards).
8. Use this space to indicate special transportation, treatment, storage or disposal or Bill of Lading information. If an alternate waste disposal site is designated, note it here. Emergency response telephone numbers or similar information may be included here.
9. The authorized agent of the waste generator shall read and then sign and date this certification. The date is the date of receipt by transporter.

NOTE: The waste generator shall retain a copy of this form.

Added 11/03/2006

APPENDIX D

INSTRUCTIONS

Transporter Section (Items 10 & 11)

10. & 11. Enter name, address, and telephone number of each transporter used, if applicable. Print or type the full name and title of person accepting responsibility and acknowledging receipt of materials as listed on this waste shipment record for transport.

NOTE: The transporter shall retain a copy of this form.

Disposal Site Section (Items 12 & 13)

12. The authorized representative of the WDS shall note in this space any discrepancy between waste described on this manifest and waste actually received as well as any improperly enclosed or contained waste. Any rejected materials should be listed and destination of those materials provided. A site that converts asbestos-containing waste material to non-asbestos material is considered a WDS.

13. The signature (by hand) of the authorized WDS agent indicates acceptance and agreement with statements on this manifest except as noted in Item 12. The date is the date of signature and receipt of shipment.

NOTE: The WDS shall retain a completed copy of this form. The WDS shall also send a completed copy to the operator listed in Item 2.

Added 11/03/2006

APPENDIX E

**Building No. 1: 3000 Block of US Route 136, Tennessee, IL 62374 (Right Station 1422+33)**

<u>Bldg. No.</u>	<u>Parcel No.</u>	<u>Location</u>	<u>Description</u>
1	408V003	3000 Block of US Route 136 Tennessee, IL 62374  (Right Station 1422+33)	20' x 32' concrete block and metal roof structure. Attached 20' x 26' lean-to garage.

**BUILDING REMOVAL - CASE II (NON-FRIABLE ASBESTOS ABATEMENT) (BDE)**

Effective: September 1, 1990

Revised: January 1, 2007

**BUILDING REMOVAL:** This work shall consist of the removal and disposal of two (2) buildings, together with all foundations, retaining walls, and piers, down to a plane 1 ft (300 mm) below the ultimate or existing grade in the area and also all incidental and collateral work necessary to complete the removal of the building(s) in a manner approved by the Engineer. Any holes, such as basements, shall be filled with a suitable granular material. The building(s) are identified as follows:

<u>Bldg. No.</u>	<u>Parcel No.</u>	<u>Location</u>	<u>Description</u>
4	408V011	Between E. 0th & E. 300 <sup>th</sup> Tennessee, IL 62374  (Left Station 55+83)	One-story residence 22' x 29'.
9	408V013	East 100 <sup>th</sup> Block of US Route 136 Tennessee, IL 62374  (Right Station 73+54)	33' x 69' residence with exterior siding and concrete porch and patio.

**Discontinuance of Utilities:** The Contractor shall arrange for the discontinuance of all utility services that serve the building(s) according to the respective requirements and regulations of the City, County, or utility companies involved. The Contractor shall disconnect and seal, in an approved manner, all service outlets that serve any building(s) he/she is to remove.

**Signs:** Immediately upon execution of the contract and prior to the wrecking of any structures, the Contractor shall be required to paint or stencil, in contrasting colors of an oil base paint, on all four sides of each residence and two opposite sides of other structures, the following sign:

Added 11/03/2006

PROPERTY ACQUIRED FOR  
HIGHWAY CONSTRUCTION  
TO BE DEMOLISHED BY THE

VANDALS WILL BE PROSECUTED

The signs shall be positioned in a prominent location on the structure so that they can be easily seen and read and at a sufficient height to prevent defacing. The Contractor shall not paint signs nor start demolition of any building(s) prior to the time that the State becomes the owner of the respective building(s).

The Contractor has the option of removing the non-friable asbestos prior to demolition or demolishing the building(s) with the non-friable asbestos in place. Refer to the Special Provisions titled "Asbestos Abatement (General Conditions)" and "Removal and Disposal of Non-Friable Asbestos Building Nos. 4 and 9" contained herein.

Basis of Payment: This work will be paid for at the contract lump sum unit price for BUILDING REMOVAL, numbers as listed above, which price shall be payment in full for complete removal of the buildings and structures, including any necessary backfilling material as specified herein. The lump sum unit price(s) for this work shall represent the cost of demolition and disposal assuming all non-friable asbestos is removed prior to demolition. Any salvage value shall be reflected in the contract unit price for this item.

EXPLANATION OF BIDDING TERMS: Two separate contract unit price items have been established for the removal of each building. They are:

1. BUILDING REMOVAL NOS. 4 and 9
2. REMOVAL AND DISPOSAL OF NON-FRIABLE ASBESTOS, BUILDING NOS. 4 and 9

The Contractor shall have two options available for the removal and disposal of the non-friable asbestos.

The pay item for removal and disposal of non-friable asbestos will not be deleted regardless of the option chosen by the Contractor.

ASBESTOS ABATEMENT (GENERAL CONDITIONS): This work consists of the removal and disposal of non-friable asbestos from the building(s) to be demolished. All work shall be done according to the requirements of the U.S. Environmental Protection Agency (USEPA), the Illinois Environmental Protection Agency (IEPA), the Occupational Safety and Health Administration (OSHA), the Special Provision for "Removal and Disposal of Non-Friable Asbestos, Building Nos. 4 and 9," and as outlined herein.

Sketches indicating the location of Asbestos Containing Material (ACM) are included in the proposal on pages 205 and 206. Also refer to the Materials Description Table on page 207 for a brief description and location of the various materials. Also included is a Materials Quantities Table on page 208. This table states the ACM is non-friable and gives the approximate quantity. The quantities are given only for information and it shall be the Contractor's responsibility to determine the exact quantities prior to submitting his/her bid.

Added 11/03/2006

The work involved in the removal and disposal of non-friable asbestos if done prior to demolition, shall be performed by a Contractor or Sub-Contractor prequalified with the Illinois Capital Development Board.

The Contractor shall provide a shipping manifest, similar to the one shown on page 209, to the Engineer for the disposal of all ACM wastes.

Permits: The Contractor shall apply for permit(s) in compliance with applicable regulations of the Illinois Environmental Protection Agency. Any and all other permits required by other federal, state, or local agencies for carrying on the work shall be the responsibility of the Contractor. Copies of the permit(s) shall be sent to the district office and the Engineer.

Notifications: The "Demolition/Renovation Notice" form, which can be obtained from the IEPA office, shall be completed and submitted to the address listed below at least ten days prior to commencement of any asbestos removal or demolition activity. Separate notices shall be sent for the asbestos removal work and the building demolition if they are done as separate operations.

Asbestos Demolition/Renovation Coordinator  
Illinois Environmental Protection Agency  
Division of Air Pollution Control  
P. O. Box 19276  
Springfield, Illinois 62794-9276  
(217) 785-1743

Notices shall be updated if there is a change in the starting date or the amount of asbestos changes by more than 20 percent.

Submittals:

- A. All submittals and notices shall be made to the Engineer except where otherwise specified herein.
- B. Submittals that shall be made prior to start of work:
  1. Submittals required under Asbestos Abatement Experience.
  2. Submit documentation indicating that all employees have had medical examinations and instruction on the hazards of asbestos exposure, on use and fitting of respirators, on protective dress, on use of showers, on entry and exit from work areas, and on all aspects of work procedures and protective measures as specified in Worker Protection Procedures.
  3. Submit manufacturer's certification stating that vacuums, ventilation equipment, and other equipment required to contain airborne fibers conform to ANSI 29.2.
  4. Submit to the Engineer the brand name, manufacturer, and specification of all sealants or surfactants to be used. Testing under existing conditions will be required at the direction of the Engineer.

Added 11/03/2006

5. Submit proof that all required permits, site locations, and arrangements for transport and disposal of asbestos-containing or asbestos-contaminated materials, supplies, and the like have been obtained (i.e., a letter of authorization to utilize designated landfill).
6. Submit a list of penalties, including liquidated damages, incurred through non-compliance with asbestos abatement project specifications.
7. Submit a detailed plan of the procedures proposed for use in complying with the requirements of this specification. Include in the plan the location and layout of decontamination units, the sequencing of work, the respiratory protection plan to be used during this work, a site safety plan, a disposal plan including the location of an approved disposal site, and a detailed description of the methods to be used to control pollution. The plan shall be submitted to the Engineer prior to the start of work.
8. Submit proof of written notification and compliance with the "Notifications" paragraph.

C. Submittals that shall be made upon completion of abatement work:

1. Submit copies of all waste chain-of-custodies, trip tickets, and disposal receipts for all asbestos waste materials removed from the work area;
2. Submit daily copies of work site entry logbooks with information on worker and visitor access;
3. Submit logs documenting filter changes on respirators, HEPA vacuums, negative pressure ventilation units, and other engineering controls; and
4. Submit results of any bulk material analysis and air sampling data collected during the course of the abatement including results of any on-site testing by any federal, state, or local agency.

Certificate of Insurance:

- A. The Contractor shall document general liability insurance for personal injury, occupational disease and sickness or death, and property damage.
- B. The Contractor shall document current Workmen's Compensation Insurance coverage.
- C. The Contractor shall supply insurance certificates as specified by the Department.

Asbestos Abatement Experience:

- A. Company Experience. Prior to starting work, the Contractor shall supply evidence that he/she has been prequalified with the Illinois Capital Development Board and that he/she has been included on the Illinois Department of Public Health's list of approved Contractors.

Added 11/03/2006

B. Personnel Experience:

1. For Superintendent, the Contractor shall supply:
  - a. Evidence of knowledge of applicable regulations in safety and environmental protection is required as well as training in asbestos abatement as evidenced by the successful completion of a training course in supervision of asbestos abatement as specified in 40 CFR 763, Subpart E, Appendix C, EPA Model Contractor Accreditation Plan. A copy of the certificate of successful completion shall be provided to the Engineer prior to the start of work.
  - b. Documentation of experience with abatement work in a supervisory position as evidenced through supervising at least two asbestos abatement projects; provide names, contact, phone number, and locations of two projects in which the individual(s) has worked in a supervisory capacity.
2. For workers involved in the removal of asbestos, the Contractor shall provide training as evidenced by the participation and successful completion of an accredited training course for asbestos abatement workers as specified in 40 CFR 763, Subpart E, Appendix C, EPA Model Contractor Accreditation Plan. A copy of the certificate of successful completion shall be provided to all employees who will be working on this project.

ABATEMENT AIR MONITORING: The Contractor shall comply with the following:

- A. Personal Monitoring. All personal monitoring shall be conducted per specifications listed in OSHA regulation, Title 29, Code of Federal Regulation 1926.58. All area sampling shall be conducted according to 40 CFR Part 763.90. All air monitoring equipment shall be calibrated and maintained in proper operating condition. Excursion limits shall be monitored daily. Personal monitoring is the responsibility of the contractor. Additional personal samples may be required by the Engineer at any time during the project.
- B. Interior Non-Friable Asbestos-Containing Materials. The contractor shall perform personal air monitoring during removal of all non-friable Transite and floor tile removal operations. The Engineer will also have the option to require additional personal samples and/or clearance samples during this type of work.
- C. Exterior Non-Friable Asbestos-Containing Materials. The contractor shall perform personal air monitoring during removal of all non-friable cementitious panels, piping, roofing felts, and built up roofing materials that contain asbestos.

The contractor shall conduct down wind area sampling to monitor airborne fiber levels at a frequency of no less than three per day.

D. Air Monitoring Professional

1. All air sampling shall be conducted by a qualified Air Sampling Professional supplied by the contractor. The Air Sampling Professional shall submit documentation of successful completion of the National Institute for Occupational Safety and Health (NIOSH) course #582 - "Sampling and Evaluating Airborne Asbestos Dust".

Added 11/03/2006

2. Air sampling shall be conducted according to NIOSH Method 7400. The results of these tests shall be provided to the Engineer within 24 hours of the collection of air samples.

REMOVAL AND DISPOSAL OF NON-FRIABLE ASBESTOS, BUILDING NOS. 4 and 9: The Contractor has the option of removing and disposing of the non-friable asbestos prior to demolition of the building(s) or demolishing the building(s) with the non-friable asbestos in place.

Option #1 - If the Contractor chooses to remove all non-friable asbestos prior to demolition, the work shall be done according to the Special Provision titled "Asbestos Abatement (General Conditions)".

Option #2 - If the Contractor chooses to demolish the building(s) with the non-friable asbestos in place, the following provisions shall apply:

1. Continuously wet all non-friable ACM and other building debris with water during demolition.
2. Dispose of all demolition debris as asbestos containing material by placing it in lined, covered transport haulers and placing it in an approved landfill.

This work will be paid for at the contract unit price per lump sum for REMOVAL AND DISPOSAL OF NON-FRIABLE ASBESTOS, BUILDING NOS. 4 and 9, as shown.

The cost for this work shall be determined as follows:

Option #1 - Actual cost of removal and disposal of non-friable asbestos.

Option #2 - The difference in cost between removing and disposing of the building if all non-friable asbestos is left in place and removing and disposing of the building assuming all non-friable asbestos is removed prior to demolition.

The cost of removing and disposing of the building(s), assuming all non-friable asbestos is removed first, shall be represented by the pay item "BUILDING REMOVAL NOS. 4 and 9".

Regardless of the option chosen by the Contractor, this pay item will not be deleted, nor will the pay item BUILDING REMOVAL NOS. 4 and 9 be deleted.

Added 11/03/2006



EXAMPLE

Attached are Appendixes A - D. These appendixes are examples of the information to be included in the proposal and referred to on page 199 of the Special Provision.

Appendix A are the sketches of the building(s) noted on page 197 of the Special Provision. These sketches show the location of asbestos on each floor of the building(s).

Appendix B provides a "Material Description Table" also referred to on page 198 of the Special Provision.

Appendix C is a "Material Quantities Table" and is referred to on page 198 of the Special Provision.

Appendix D is a sample of a Shipping Manifest form referred to on page 199.

Appendix E is a sample of the building(s) identification needed on page 197.

Added 11/03/2006

APPENDIX A

BUILDING DRAWINGS – ASBESTOS LOCATIONS

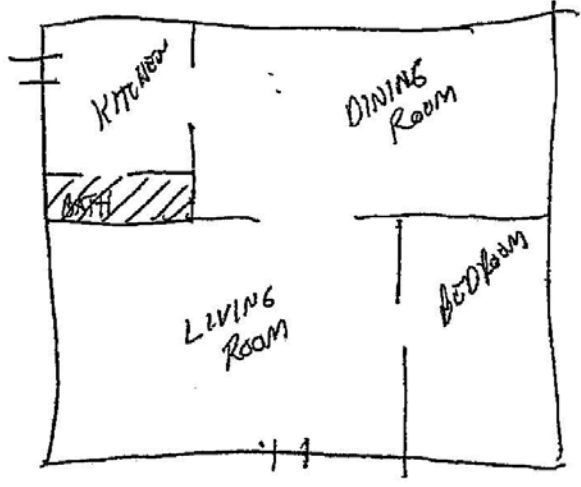
INDEX OF DRAWINGS


<b>Building Nos. 4 and 9</b>	<b>Figures 1 – 2</b>
------------------------------	----------------------

Added 11/03/2006

PSI

BUILDING NO. 4 - HOUSE



 VINYL SHEET FLOORING

← N

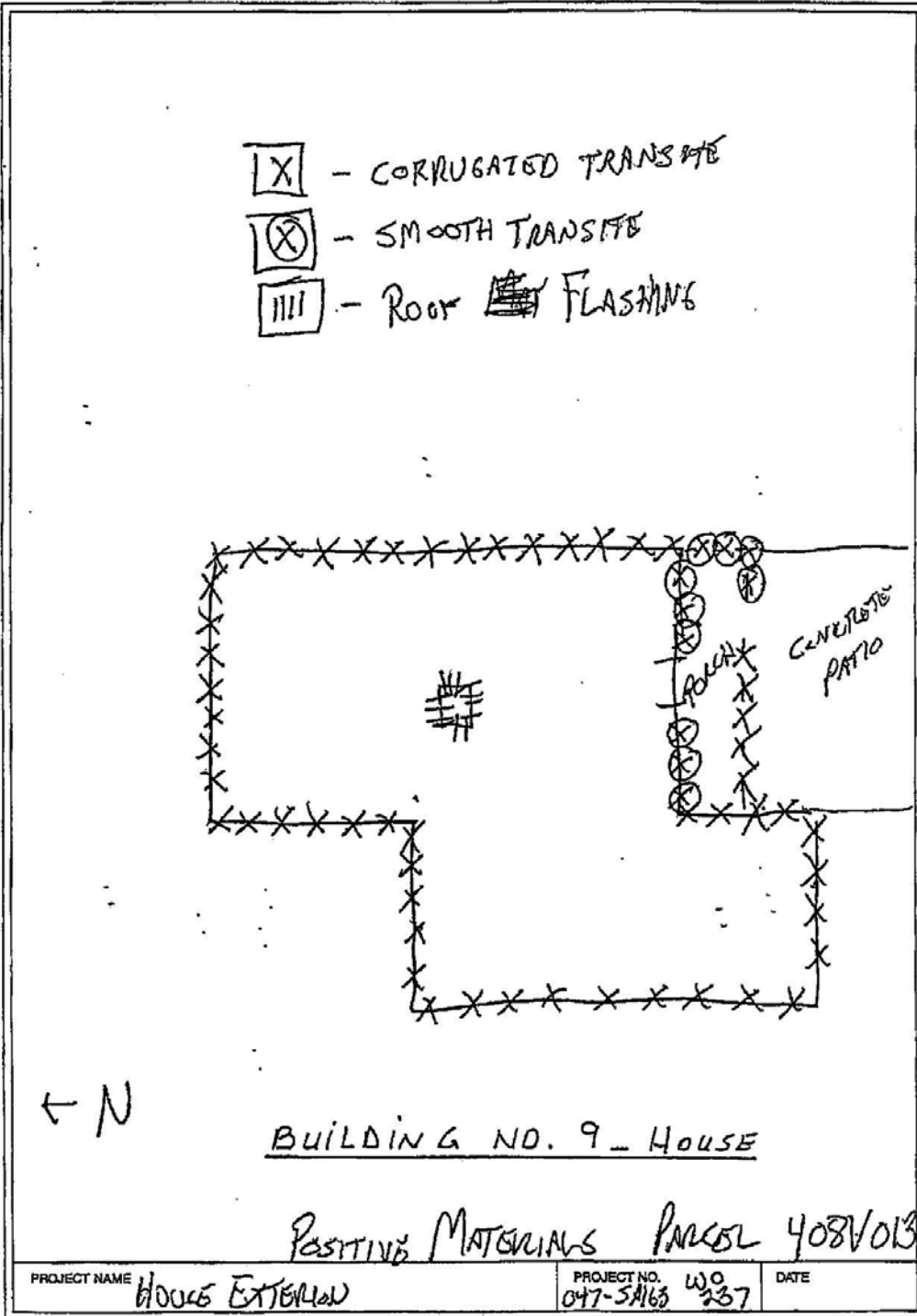
POSITIVE MATERIALS PARCEL 408V011

PROJECT NAME DOT 237 - House	PROJECT NO. 047-SA163	DATE 10/16/06
---------------------------------	--------------------------	------------------

PSI A-300-7 (2)

Added 11/03/2006

PSI



PSI A-300-T (2)

Added 11/03/2006

APPENDIX B

MATERIAL DESCRIPTION TABLE

Material	Percent & Type of Chrysotile	Number (If Applicable)
----------	------------------------------	------------------------

**Building No. 4: Between E. 0<sup>th</sup> and E. 300<sup>th</sup>, Tennessee, IL 62374 (Left Station 55+83)  
 Parcel No. 408V011**

**Building No. 9: East 100<sup>th</sup> Block of US Route 136, Tennessee, IL 62374 (Right Station 73+54)  
 Parcel No. 408V013**

<u>Material Description</u>	<u>% and Type of Asbestos</u>	<u>Location, Condition &amp; Sample No.</u>
<b>Building No. 4: Parcel No. 408V011. (Left Station 55+83)</b>		
Diamond pattern vinyl sheet flooring	20% Chrysotile	Bathroom
<b>Building No. 9: Parcel No. 408V013. (Right Station 73+54)</b>		
Smooth white transite board	20% Chrysotile	Southeast doorway at porch.
Corrugated white transite	20% Chrysotile	Exterior siding.
Roof flashing material	5% Chrysotile	Roof Chimney.

Added 11/03/2006

APPENDIX C

MATERIAL QUANTITIES TABLE

The following are approximate quantities of ACM to be removed from the building indicated. These material quantities do not indicate the cleaning required removing asbestos debris and resulting contamination from the work areas.

**Building No 4: Between E. 0<sup>th</sup> and E. 300<sup>th</sup>, Tennessee, IL 62374 (Left Station 55+83)**

**Building No. 9: East 100<sup>th</sup> Block of US Route 136, Tennessee, IL 62374 (Right Station 73+54)**

<u>Material</u>	<u>Floor</u>	<u>Quantity Present</u>	<u>Friable</u>
<b><u>Building No. 4: Parcel No. 408V011. (Left Station 55+83)</u></b>			
Diamond pattern vinyl sheet flooring.	Bathroom	20 sq. ft.	No
<b><u>Building No. 9: Parcel No. 408V013. (Right Station 73+54)</u></b>			
Smooth white transite board.	Southeast doorway at porch	350 sq. ft.	No
Corrugated white transite.	Exterior siding	2,010 sq. ft.	No
Roof flashing material	Roof chimney	4 linear ft.	No

Added 11/03/2006

APPENDIX D  
 SHIPPING MANIFEST

Generator

1. Work Site Name and Mailing Address	Owner's Name	Owner's Telephone No.
2. Operator's Name and Address		Operator's Telephone No.
3. Waste Disposal Site (WDS) Name Mailing Address, and Physical Site Location		WDS Telephone No.
4. Name and Address of Responsible Agency		
5. Description of Materials		
6. Containers	No.	Type
7. Total Quantity	M <sup>3</sup>	(Yd <sup>3</sup> )
8. Special Handling Instructions and Additional Information		
9. OPERATOR'S CERTIFICATION: I hereby declare that the contents of this consignment are fully and accurately described above by proper shipping name and are classified, packed, marked, and labeled, and are in all respects in proper condition for transport by highway according to applicable international and government regulations.		
Printed/Typed Name & Title	Signature	Month Day Year

Transporter

10. Transporter 1 (Acknowledgement of Receipt of Materials)		
Printed/Typed Name & Title	Signature	Month Day Year
Address and Telephone No.		
11. Transporter 2 (Acknowledgement of Receipt of Materials)		
Printed/Typed Name & Title	Signature	Month Day Year
Address and Telephone No.		

Disposal Site

12. Discrepancy Indication Space		
13. Waste Disposal Site Owner or Operator:		Certification of Receipt of Asbestos Materials Covered By This Manifest Except As Noted in Item 12
Printed/Typed Name & Title	Signature	Month Day Year

Added 11/03/2006

APPENDIX D

INSTRUCTIONS

Waste Generator Section (Items 1-9)

1. Enter the name of the facility at which asbestos waste is generated and the address where the facility is located. In the appropriate spaces, also enter the name of the owner of the facility and the owner's phone number.
2. If a demolition or renovation, enter the name and address of the Company and authorized agent responsible for performing the asbestos removal. In the appropriate spaces, also enter the phone number of the operator.
3. Enter the name, address, and physical site location of the waste disposal site (WDS) that will be receiving the asbestos materials. In the appropriate spaces, also enter the phone number of the WDS. Enter "on-site" if the waste will be disposed of on the generator's property.
4. Provide the name and address of the local, State, or EPA Regional Office responsible for administering the asbestos NESHAP program.
5. Indicate the types of asbestos waste materials generated. If from a demolition or renovation, indicate the amount of asbestos that is
  - Friable asbestos material
  - Nonfriable asbestos material
6. Enter the number of containers used to transport the asbestos materials listed in Item 5. Also enter one of the following container codes used in transporting each type of asbestos material (specify any other type of container used if not listed below):  
  
DM – Metal drums, barrels  
DP – Plastic drums, barrels  
BA – 6 mil plastic bags or wrapping
7. Enter the quantities of each type of asbestos material removed in units of cubic meters (cubic yards).
8. Use this space to indicate special transportation, treatment, storage or disposal or Bill of Lading information. If an alternate waste disposal site is designated, note it here. Emergency response telephone numbers or similar information may be included here.
9. The authorized agent of the waste generator shall read and then sign and date this certification. The date is the date of receipt by transporter.

NOTE: The waste generator shall retain a copy of this form.

Added 11/03/2006



APPENDIX D

INSTRUCTIONS

Transporter Section (Items 10 & 11)

10. & 11. Enter name, address, and telephone number of each transporter used, if applicable. Print or type the full name and title of person accepting responsibility and acknowledging receipt of materials as listed on this waste shipment record for transport.

NOTE: The transporter shall retain a copy of this form.

Disposal Site Section (Items 12 & 13)

12. The authorized representative of the WDS shall note in this space any discrepancy between waste described on this manifest and waste actually received as well as any improperly enclosed or contained waste. Any rejected materials should be listed and destination of those materials provided. A site that converts asbestos-containing waste material to non-asbestos material is considered a WDS.
13. The signature (by hand) of the authorized WDS agent indicates acceptance and agreement with statements on this manifest except as noted in Item 12. The date is the date of signature and receipt of shipment.

NOTE: The WDS shall retain a completed copy of this form. The WDS shall also send a completed copy to the operator listed in Item 2.

Added 11/03/2006

APPENDIX E

**Building No. 4: Between E. 0<sup>th</sup> & E. 300<sup>th</sup>, Tennessee, IL 62374 (Left Station 55+83)**

**Building No. 9: East 100<sup>th</sup> Block of US Route 136, Tennessee, IL 62374 (Right Station 73+54)**

<u>Bldg. No.</u>	<u>Parcel No.</u>	<u>Location</u>	<u>Description</u>
4	408V011	Between E. 0 <sup>th</sup> & E. 300 <sup>th</sup> Tennessee, IL 62374  (Left Station 55+83)	One-story residence 22' x 29'.
9	408V013	East 100 <sup>th</sup> Block of US Route 136 Tennessee, IL 62374  (Right Station 73+54)	33' x 69' residence with exterior siding and concrete porch and pad.

**BUILDING REMOVAL - CASE IV (NO ASBESTOS) (BDE)**

Effective: September 1, 1990

Revised: January 1, 2007

**BUILDING REMOVAL:** This work shall consist of the removal and disposal of thirteen (13) buildings, together with all foundations, retaining walls, and piers, down to a plane 1 ft (300 mm) below the ultimate or existing grade in the area and also all incidental and collateral work necessary to complete the removal of the building(s) in a manner approved by the Engineer. Any holes, such as basements, shall be filled with a suitable granular material. The building(s) are identified as follows:

**Building Nos. 2 and 3: 3000 Block of US Route 136, Tennessee, IL 62374**

**Building Nos. 6–8 and 10–17: East 100<sup>th</sup> Block of US Route 136, Tennessee, IL 62374**

<u>Bldg. No.</u>	<u>Parcel No.</u>	<u>Location</u>	<u>Description</u>
2	408V003	3000 Block of US Route 136 Tennessee, IL 62374  (Right Station 1429+35)	Burned building.
3	408V003	3000 Block of US Route 136 Tennessee, IL 62374  (Right Station 1430+16)	18' x 20' metal clad pole shed.

Added 11/03/2006

<b>Bldg. No.</b>	<b>Parcel No.</b>	<b>Location</b>	<b>Description</b>
6	408V013	East 100 <sup>th</sup> Block of US Route 136 Tennessee, IL 62374  (Left Station 73+06)	10' x 16' metal shed.
7	408V013	East 100 <sup>th</sup> Block of US Route 136 Tennessee, IL 62374  (Left Station 73+12)	64' x 24' crib with metal roof.
8	408V013	East 100 <sup>th</sup> Block of US Route 136 Tennessee, IL 62374  (Left Station 73+12)	15' x 26' shed with metal exterior and roof.
10	408V013	East 100 <sup>th</sup> Block of US Route 136 Tennessee, IL 62374  (Left Station 73+85)	16' x 20' portable frame shed.
11	408V013	East 100 <sup>th</sup> Block of US Route 136 Tennessee, IL 62374  (Left Station 74+27)	32' x 46' garage with exterior frame.
12	408V013	East 100 <sup>th</sup> Block of US Route 136 Tennessee, IL 62374  (Left Station 74+80)	42' x 46' machine shed with metal exterior.
13	408V013	East 100 <sup>th</sup> Block of US Route 136 Tennessee, IL 62374  (Left Station 74+80)	14' x 24' shed with metal roof and exterior.
14	408V013	East 100 <sup>th</sup> Block of US Route 136 Tennessee, IL 62374  (Left Station 75+41)	Metal grain bin with concrete foundation.
15	408V013	East 100 <sup>th</sup> Block of US Route 136 Tennessee, IL 62374  (Left Station 75+41)	Metal grain bin with concrete foundation.

Added 11/03/2006

<b>Bldg. No.</b>	<b>Parcel No.</b>	<b>Location</b>	<b>Description</b>
16	408V013	East 100 <sup>th</sup> Block of US Route 136 Tennessee, IL 62374  (Left Station 73+52)	10' x 12' metal shed.
17	408V013	East 100 <sup>th</sup> Block of US Route 136 Tennessee, IL 62374  (Left Station 73+03)	10' x 12' metal shed.

Discontinuance of Utilities: The Contractor shall arrange for the discontinuance of all utility services that serve the building(s) according to the respective requirements and regulations of the City, County, or utility companies involved. The Contractor shall disconnect and seal, in an approved manner, all service outlets that serve any building(s) he/she is to remove.

Signs: Immediately upon execution of the contract and prior to the wrecking of any structures, the Contractor shall be required to paint or stencil, in contrasting colors of an oil base paint, on all four sides of each residence and two opposite sides of other structures, the following sign:

PROPERTY ACQUIRED FOR  
 HIGHWAY CONSTRUCTION  
 TO BE DEMOLISHED BY THE

VANDALS WILL BE PROSECUTED

The signs shall be positioned in a prominent location on the structure so that they can be easily seen and read and at a sufficient height to prevent defacing. The Contractor shall not paint signs nor start demolition of any building(s) prior to the time that the State becomes the owner of the respective building(s).

Basis of Payment: This work will be paid for at the contract lump sum unit price for BUILDING REMOVAL, numbers as listed above, which price shall be payment in full for complete removal of the buildings and structures, including any necessary backfilling material as specified herein. The lump sum unit price(s) for this work shall represent the cost of demolition. Any salvage value shall be reflected in the contract unit price for this item.

Notifications: The "Demolition/Renovation Notice" form, which can be obtained from the IEPA office, shall be completed and submitted to the address listed below at least ten days prior to commencement of any demolition activity.

Added 11/03/2006

Asbestos Demolition/Renovation Coordinator  
Illinois Environmental Protection Agency  
Division of Air Pollution Control  
P. O. Box 19276  
Springfield, Illinois 62794-9276  
(217)785-1743

Notices shall be updated if there is a change in the starting date or the amount of asbestos changes by more than 20 percent.

Submittals:

- A. All submittals and notices shall be made to the Engineer except where otherwise specified herein.
- B. Prior to starting work, the Contractor shall submit proof of written notification and compliance with the "Notifications" paragraph.

Added 11/03/2006