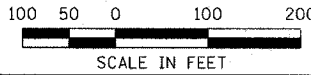
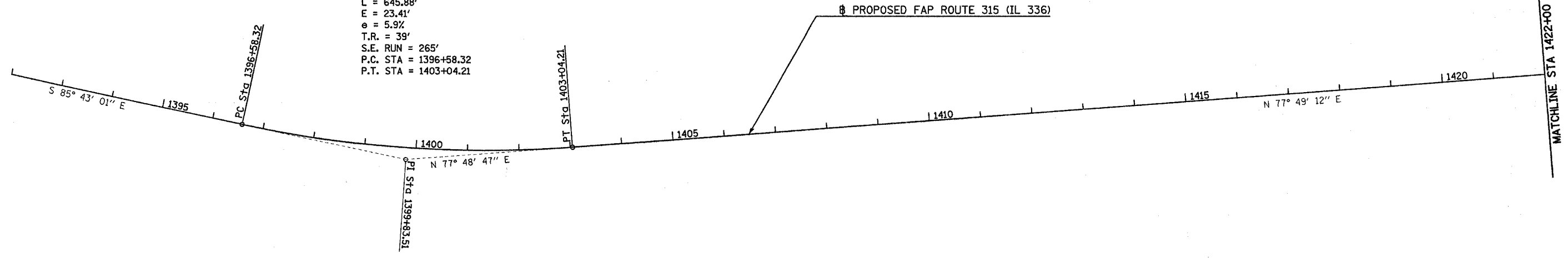


F.A.P. RTE.	SECTION	COUNTY	TOTAL SHEETS	SHEET NO.
315	(34-6,55-1)	HANCOCK/McDONOUGH	433	40
STA. 1392+00		TO STA. 1+00		
FED. ROAD DIST. NO.		ILLINOIS	FED. AID PROJECT	
STATE CONTRACT NO. 68206				

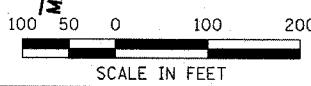
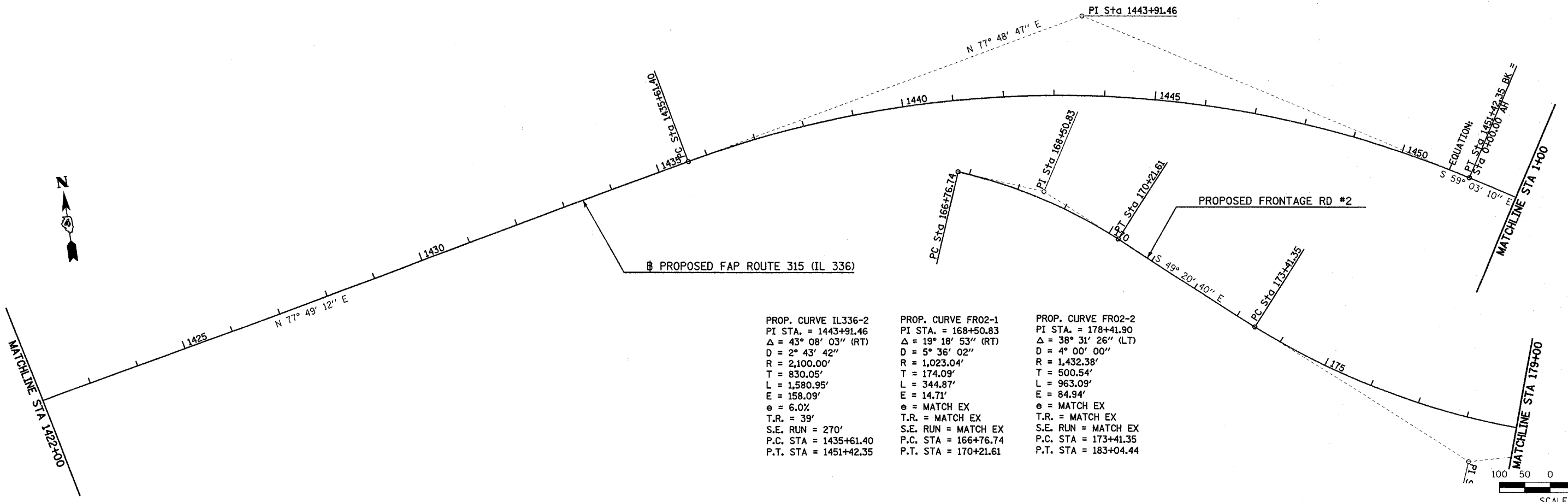
PROP. CURVE IL336-1
 PI STA. = 1399+83.51
 $\Delta = 16^\circ 28' 12''$ (LT)
 $D = 2^\circ 33' 00''$
 $R = 2,246.89'$
 $T = 325.18'$
 $L = 645.88'$
 $E = 23.41'$
 $e = 5.9\%$
 $T.R. = 39'$
 $S.E. RUN = 265'$
 $P.C. STA = 1396+58.32$
 $P.T. STA = 1403+04.21$



PROP. CURVE IL336-2
 PI STA. = 1443+91.46
 $\Delta = 43^\circ 08' 03''$ (RT)
 $D = 2^\circ 43' 42''$
 $R = 2,100.00'$
 $T = 830.05'$
 $L = 1,580.95'$
 $E = 158.09'$
 $e = 6.0\%$
 $T.R. = 39'$
 $S.E. RUN = 270'$
 $P.C. STA = 1435+61.40$
 $P.T. STA = 1451+42.35$

PROP. CURVE FR02-1
 PI STA. = 168+50.83
 $\Delta = 19^\circ 18' 53''$ (RT)
 $D = 5^\circ 36' 02''$
 $R = 1,023.04'$
 $T = 174.09'$
 $L = 344.87'$
 $E = 14.71'$
 $e = MATCH EX$
 $T.R. = MATCH EX$
 $S.E. RUN = MATCH EX$
 $P.C. STA = 166+76.74$
 $P.T. STA = 170+21.61$

PROP. CURVE FR02-2
 PI STA. = 178+41.90
 $\Delta = 38^\circ 31' 26''$ (LT)
 $D = 4^\circ 00' 00''$
 $R = 1,432.38'$
 $T = 500.54'$
 $L = 963.09'$
 $E = 84.94'$
 $e = MATCH EX$
 $T.R. = MATCH EX$
 $S.E. RUN = MATCH EX$
 $P.C. STA = 173+41.35$
 $P.T. STA = 183+04.44$



Plot Date: 7/6/2006
 Plot Time: 12:43:37 PM
 Plot User: jason.taylor
 File Name: I:\030333\road\construction\plans\01\h00m1392.dgn